



Developing Otago's new Land and Water Regional Plan

Haere mai

Housekeeping

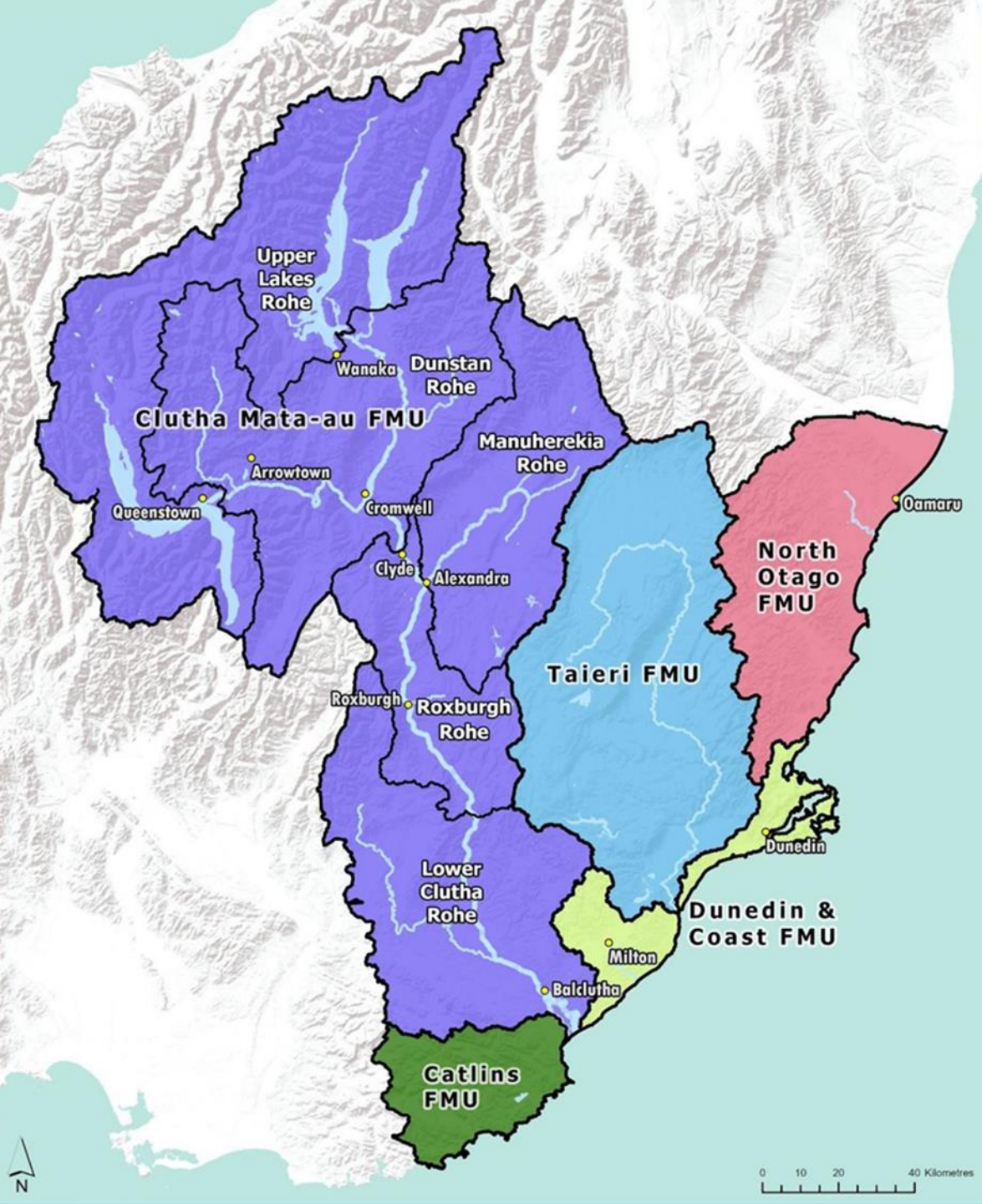
Karakia

Councillor welcome

Presentation

Activity





Today

- Why are we here?
- Context
- Questions?
- Your turn
- Next steps & key dates



Why are we here today?



Why now?

- Plan review is overdue
- Increasingly complex issues
- Not fit for purpose



Philosophy

- Simple & robust planning
- Easy to use
- Focuses on environmental outcomes
- Activity-based
- Achieves national policy direction

The Hierarchy of Plans

Te Tiriti o Waitangi



Resource Management Act 1991



National Policy Statements,
Environmental Standards
and Regulations

Coastal Policy Statement



Regional Policy Statement



Regional Plans

Air Plan, Coast Plan,
Waste Plan, Water Plan



Land and Water Regional Plan

District Plans





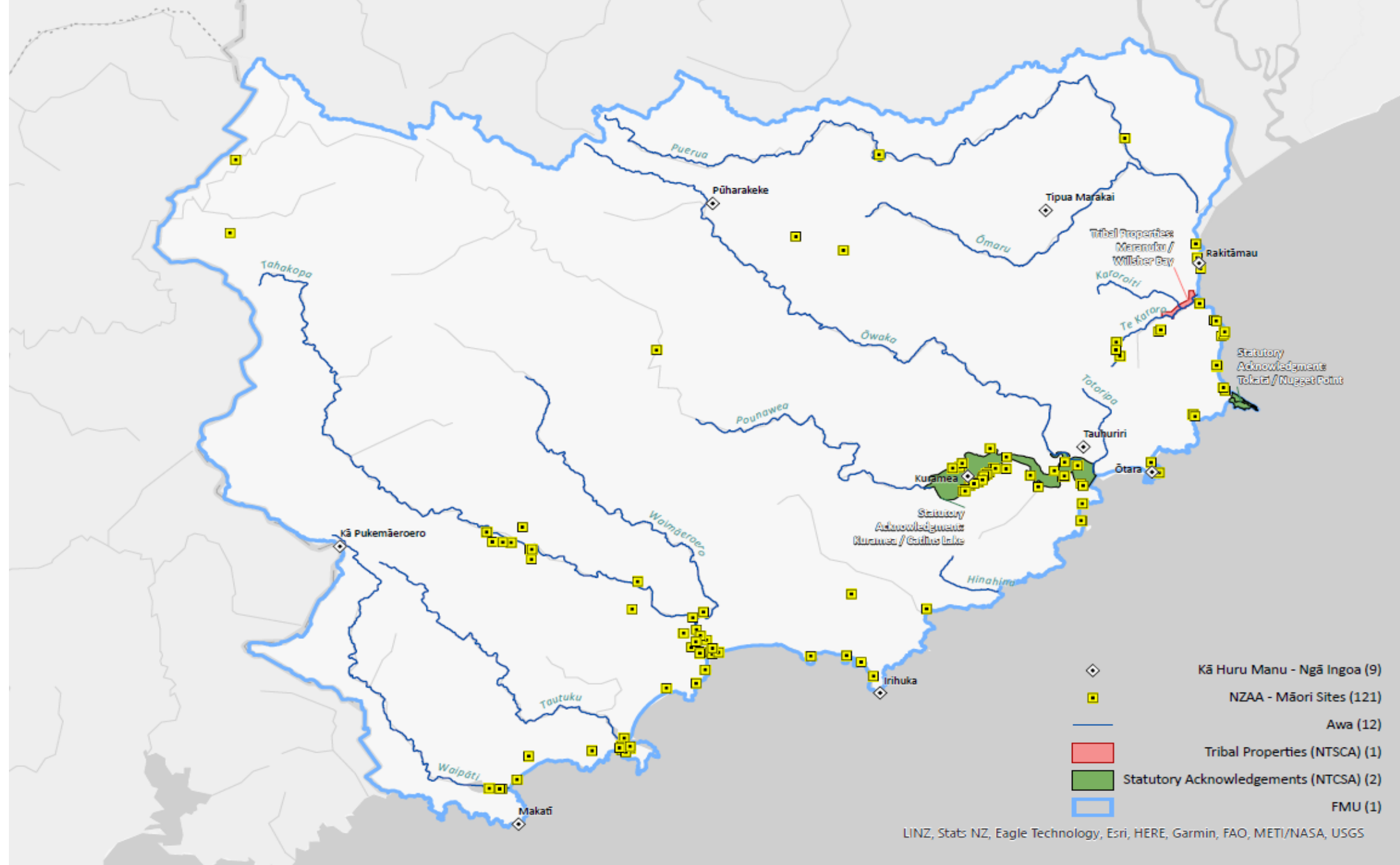
Whakapapa

Ki uta ki tai

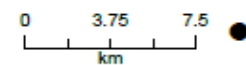
Te mana o te wai

Hauora

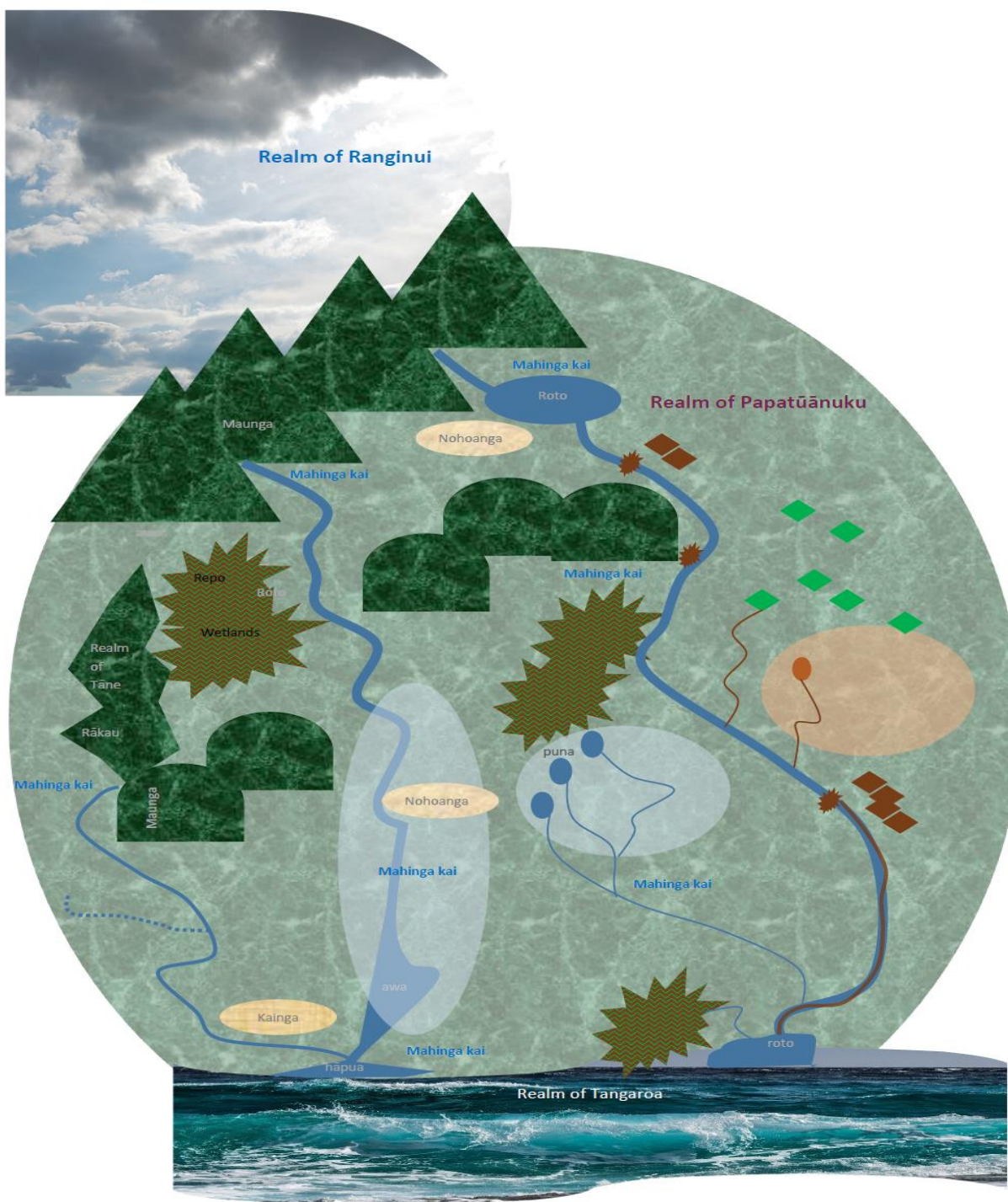
Mahika kai



Catlins FMU







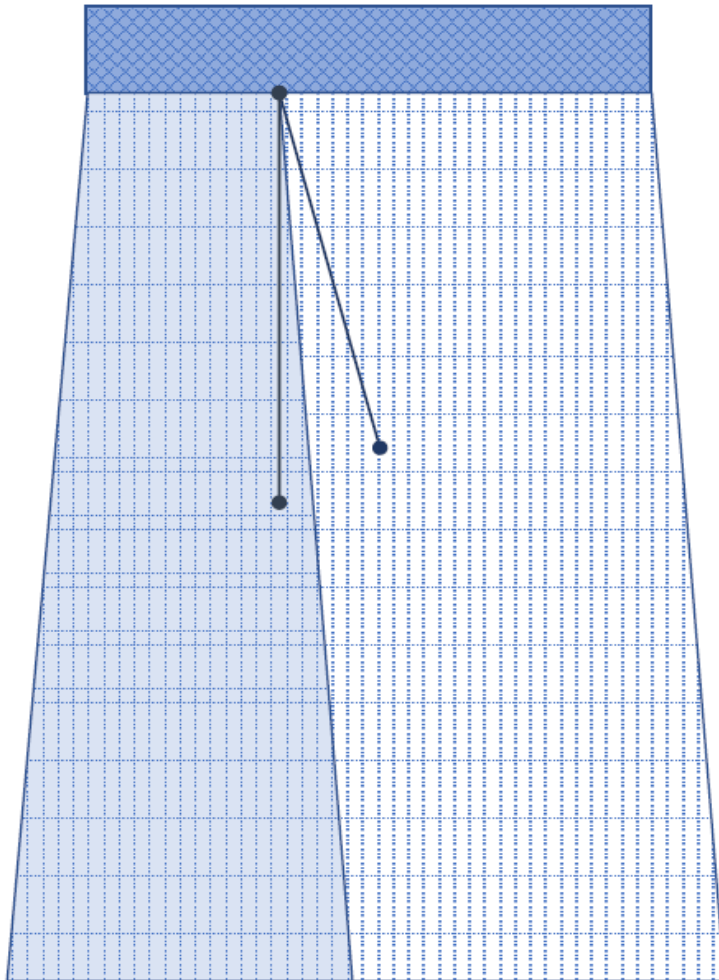
Whakapapa

Ki uta ki tai

Te mana o te wai

Hauora

Mahika kai



Hauora



uses



values



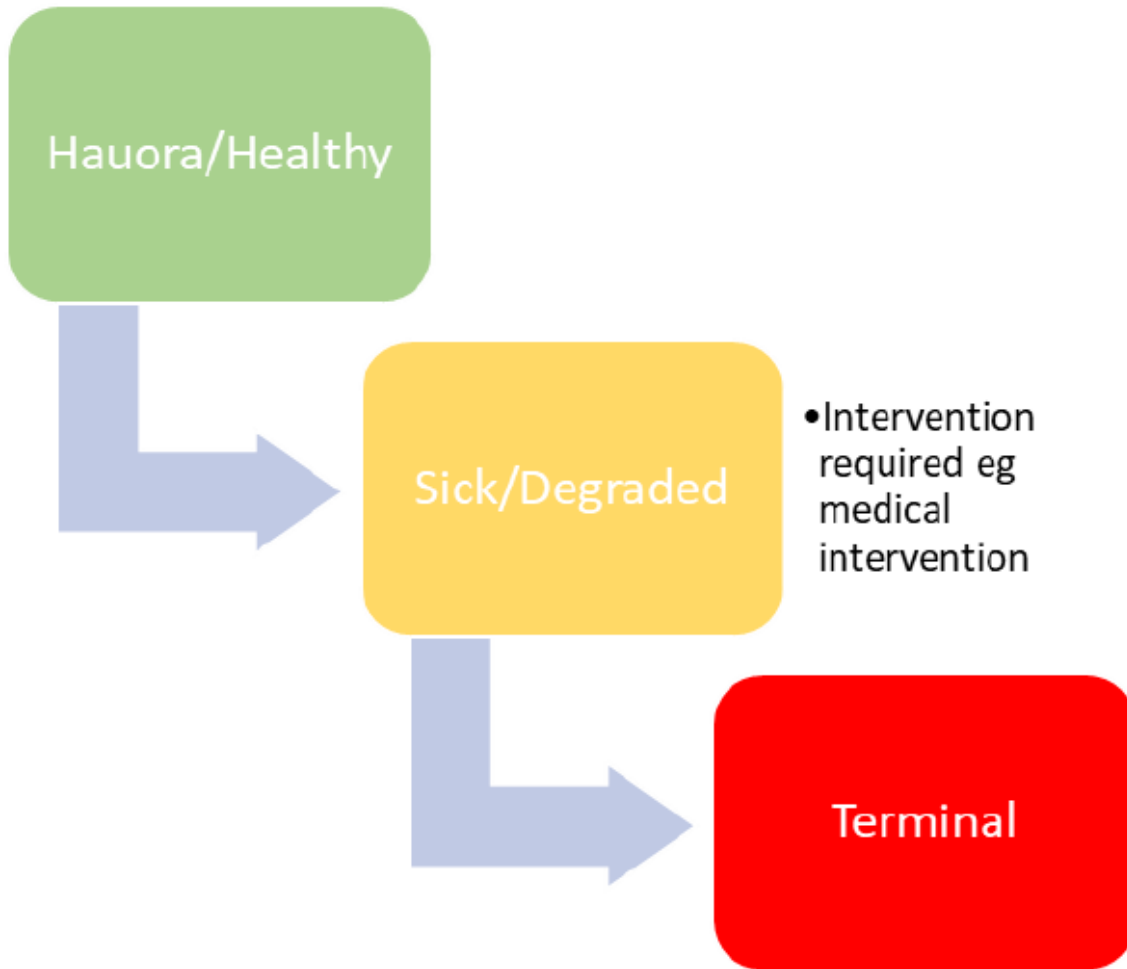
Whakapapa

Ki uta ki tai

Te mana o te wai

Hauora

Mahika kai



Whakapapa

Ki uta ki tai

Te mana o te wai

Hauora

Mahika kai



Ki Uta Ki Tai

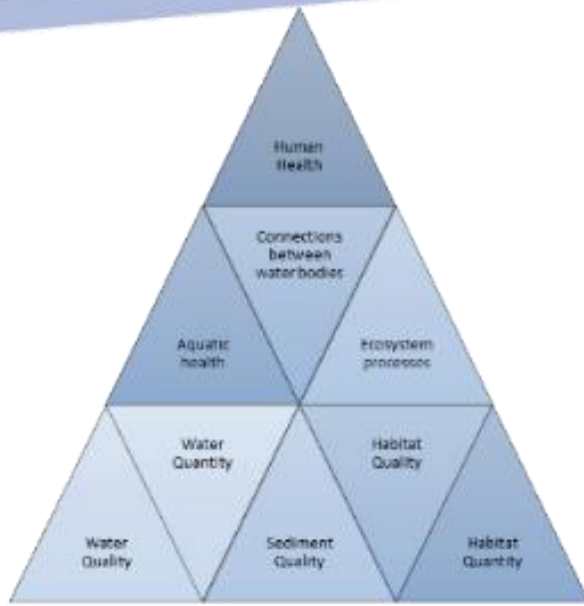
Whakapapa

Ki uta ki tai

Te mana o te wai

Hauora

Mahika kai





Whakapapa

Ki uta ki tai

Te mana o te wai

Hauora

Mahika kai



Te Mana o te Wai

1st

is to the **water**, to protect its health and its mauri

2nd

provides for **essential human health** such as drinking water

3rd

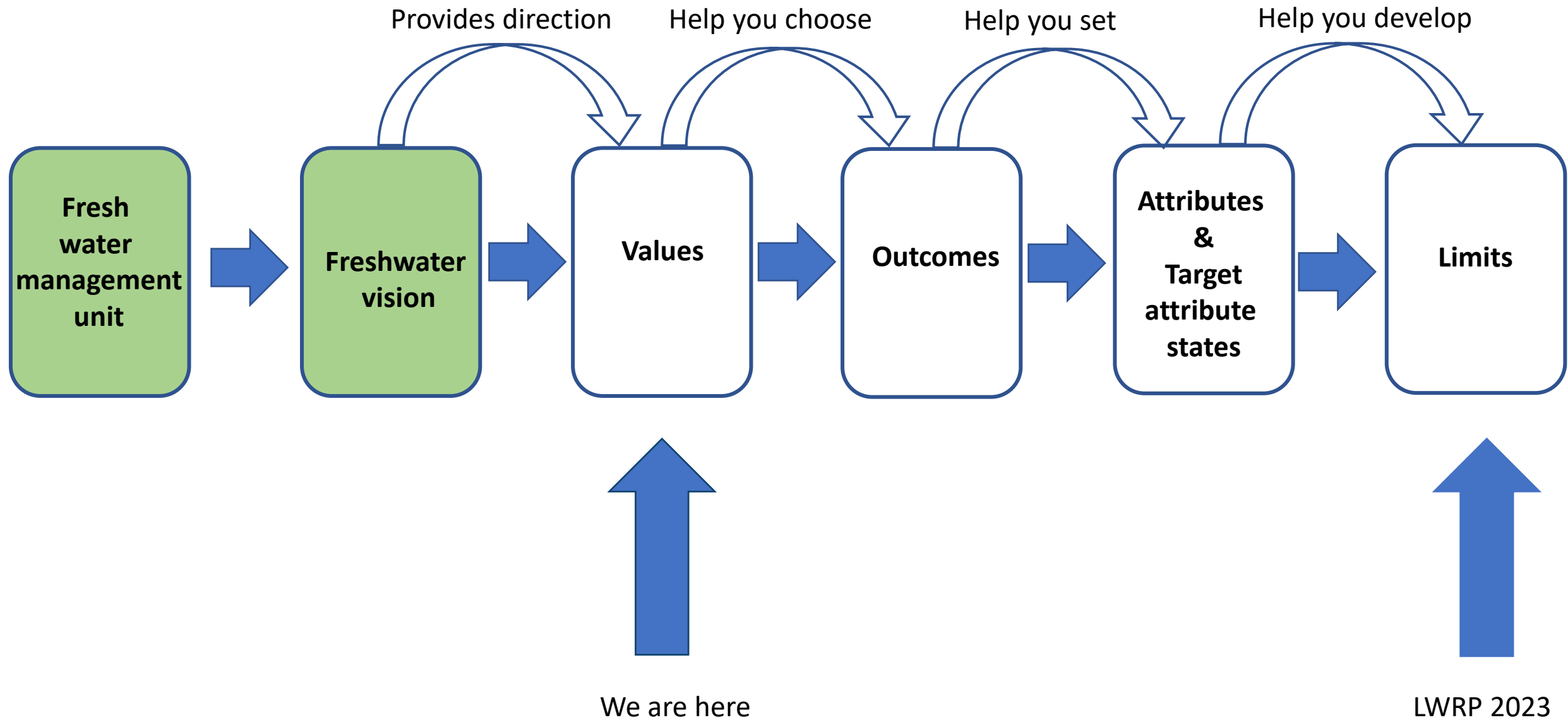
is for **other uses** provided that such use does not adversely impact the mauri of freshwater

Catlins FMU Long-term Visions (from the proposed RPS)

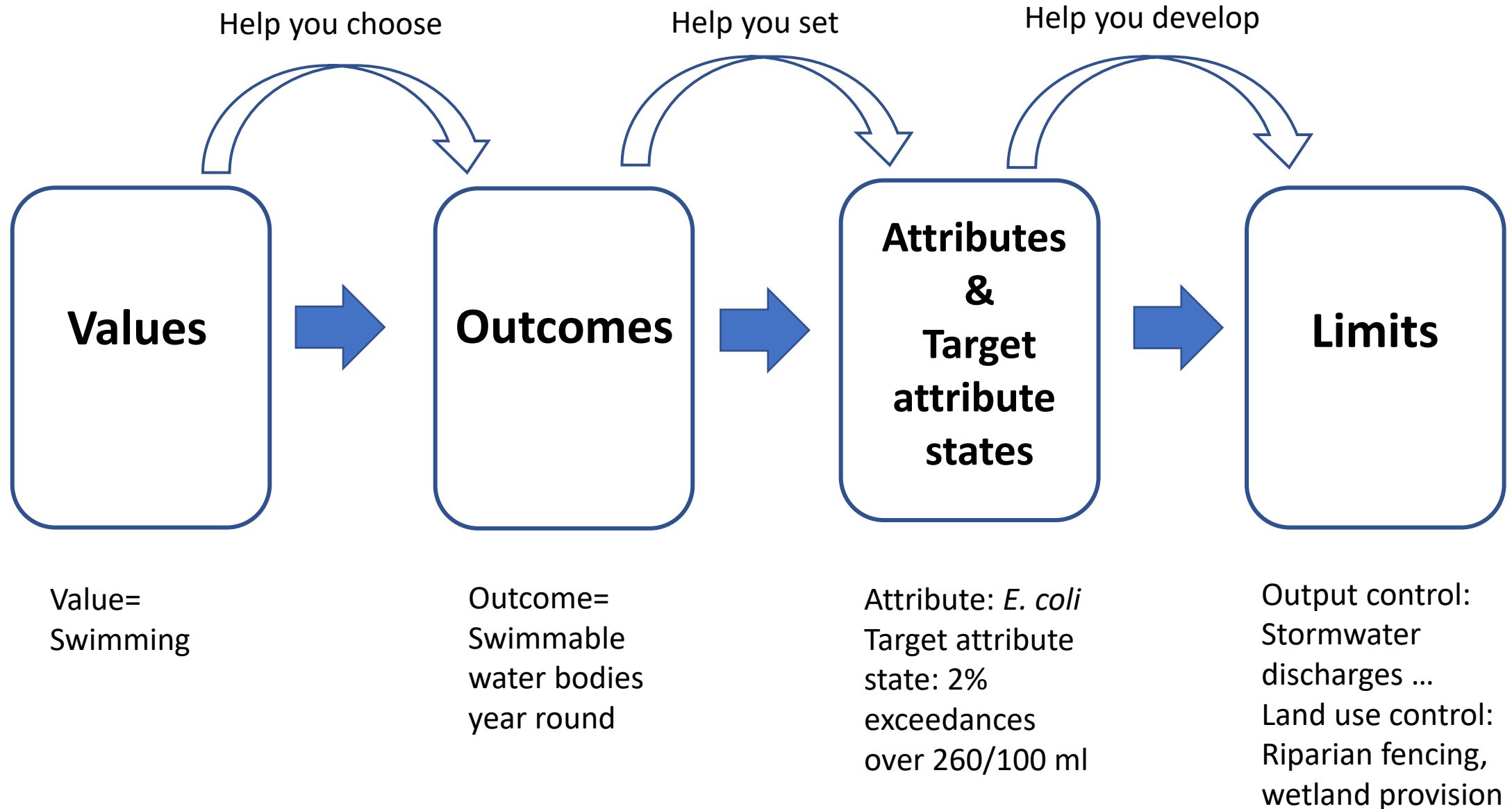
By 2030 in the Catlins FMU:

- (1) freshwater is managed in accordance with the RPS' "LF-WAI" objectives and policies,
- (2) the on-going relationship of Kāi Tahu with wāhi tūpuna is sustained,
- (3) water bodies support thriving mahika kai and access of Kāi Tahu whānui to mahika kai,
- (4) the high degree of naturalness and ecosystem connections between the forests, freshwater and coastal environment are preserved,
- (5) water bodies and their catchment areas support the health and well-being of coastal water, ecosystems and indigenous species, including downstream kaimoana, and
- (6) healthy, clear and clean water supports opportunities for recreation and sustainable food production for future generations.

Building the Land and Water Regional Plan



Building the Land and Water Regional Plan





Catlins FMU Values

Compulsory values

- Water quality
- Water quantity
- Habitat
- Aquatic life
- Human contact (recreation)
- Threatened species
- Mahika kai

Values that must be considered

- Drinking water supply
- Wāhi tapu
- Launch and land water craft/ waka
- Natural form and character
- Fishing
- Agriculture and its associated activities (not much irrigation is needed here)
- Animal drinking water
- Commercial & domestic use

Other values identified

- Tourism
- Taoka species (especially your iconic yellow-eyed penguins)
- Non-contact recreation (the waterscape backdrops to life within Catlins open spaces, for locals and visitors)
- Heritage
- Wāhi tūpuna



Key dates & Next steps

- Feedback closes 20th December
- A range of management options for achieving your freshwater visions will be presented in February 2022



Interactive session

Value

Water quality



Characteristics

Clarity of water

Odour of water

Contact/immersion safety

Presence of fish

Presence of invertebrates



Map value





Process for the interactive session

Please circulate among the different values (one per sheet)

- Identify the characteristics that matter to you (first column)
- Indicate whether these characteristics are currently ok (second column)
- Show us where (yellow dot on the map)

After 20 minutes, we will come back, discuss the process and answer any questions.



- Thank you for coming!
- Provide further feedback by the 20th December
 - Online www.orc.govt.nz/Catlins
 - Email policy@orc.govt.nz
- Go to our website for more info, including science & economic summaries of the FMU
www.orc.govt.nz/Catlins