

Land & Water Regional Plan for Otago

Community consultation on
environmental outcomes and
actions



Upper Lakes
31 October 2022

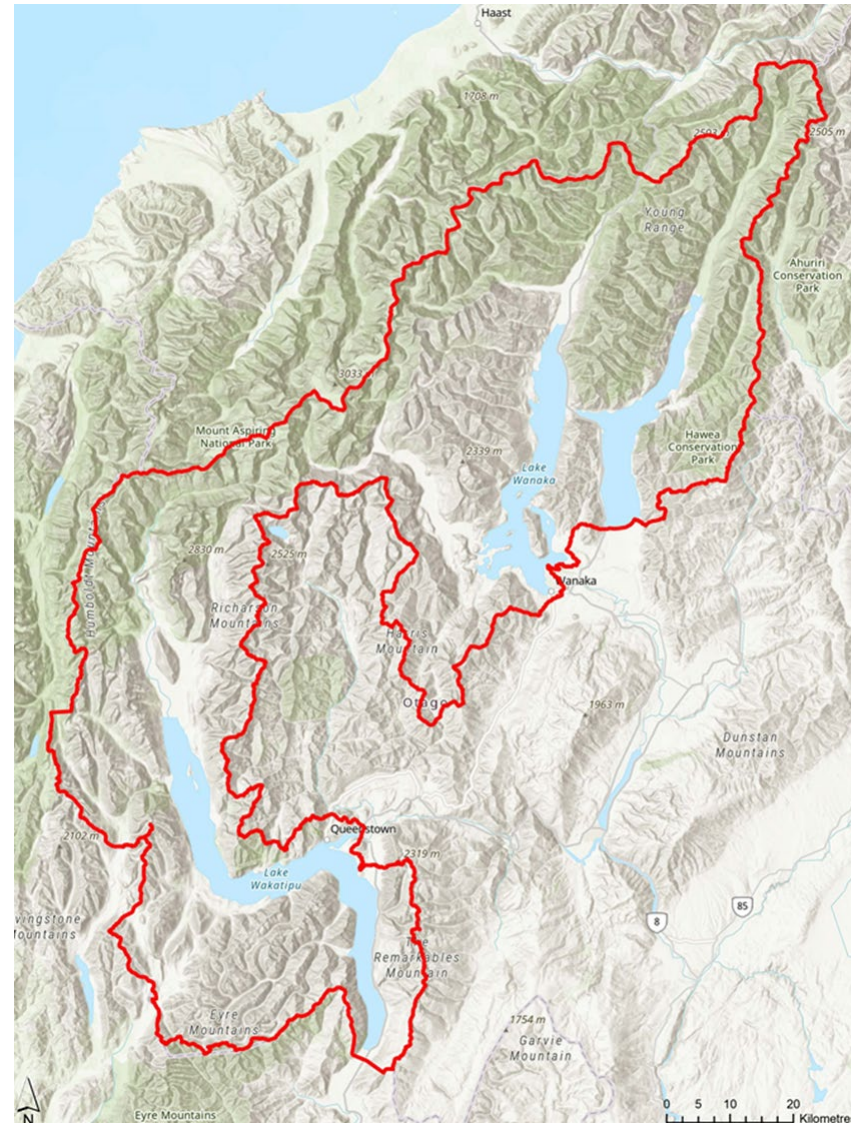


Meeting outline

- ▶ Presentation: background
- ▶ Group discussion: possible environmental outcomes
- ▶ Group discussion: possible actions

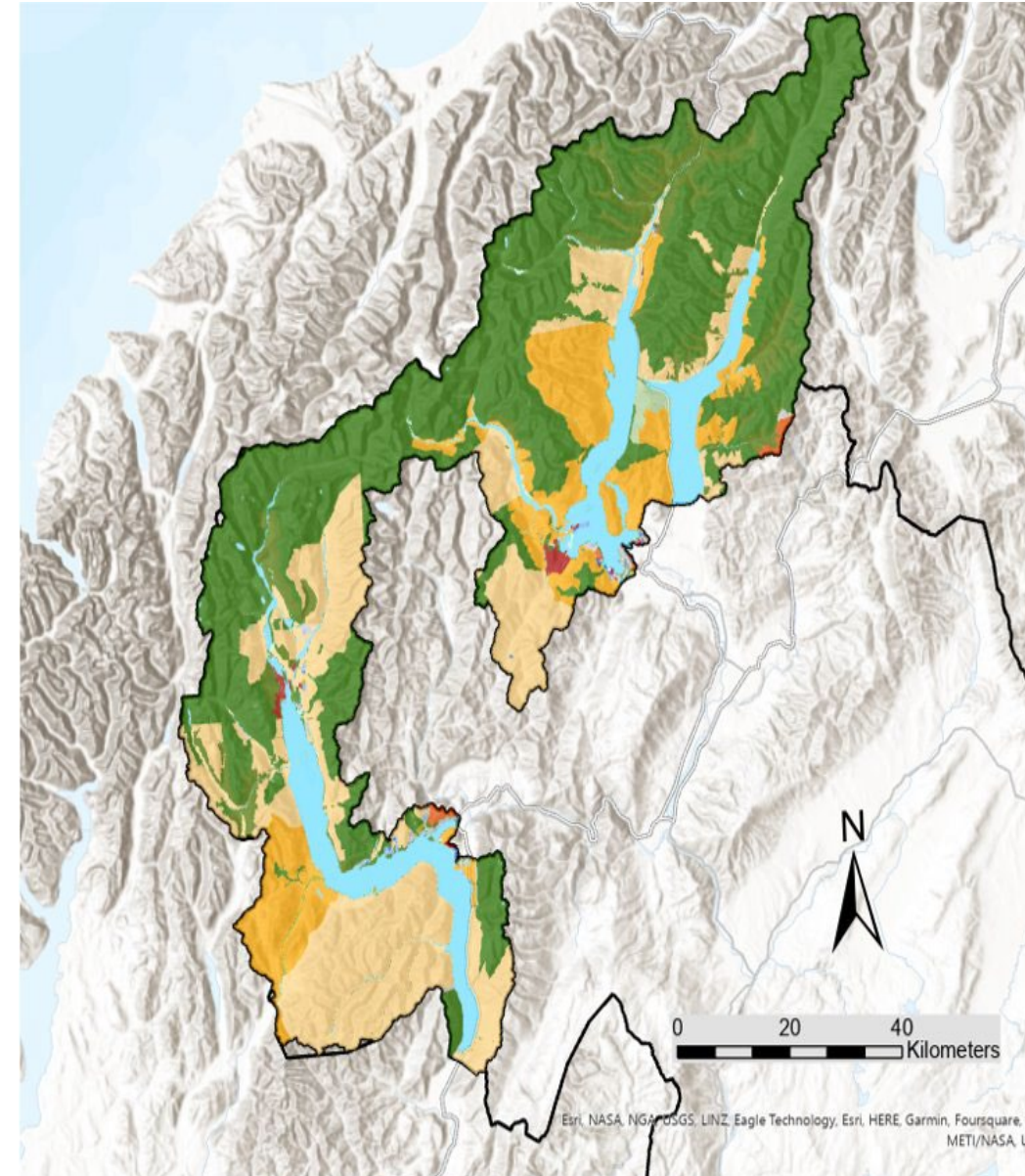


Upper Lakes Rohe



Land use overview

- Conservation land (dominant land use) 45%
- Dry stock farming (sheep & beef and deer) 36%
- Lakes and rivers 11%
- Urban land use area 1% (53% increase 1990-2018)



Water quality

- ▶ Lakes & rivers very good, but degrading trends (Nitrate)
- ▶ Monitoring results reflect impact of land use change (e.g. urban growth)
- ▶ Issues with some contaminants (suspended sediment, periphyton @ small number of sites)



Land & Water Regional Plan

- ▶ Notified by December 2023
- ▶ Key concepts
 - ▶ Te Mana o te Wai (health of the water)
 - ▶ Integrated management
 - ▶ Holistic (ki uta ki tai/ Mountains to sea)
 - ▶ Future proof (climate change)



Values for the Upper Lakes

FIRST PRIORITY – health and well being of water bodies and freshwater ecosystems

Ecosystem
health

Threatened
and taoka
species

Natural
form and
character

SECOND PRIORITY – health needs of people

Drinking
water
supply

THIRD PRIORITY – social, economic, and cultural well being

Animal
drinking
water

Food
production

Commercial
& industrial
use

Recreation
(human
contact)

Fishing

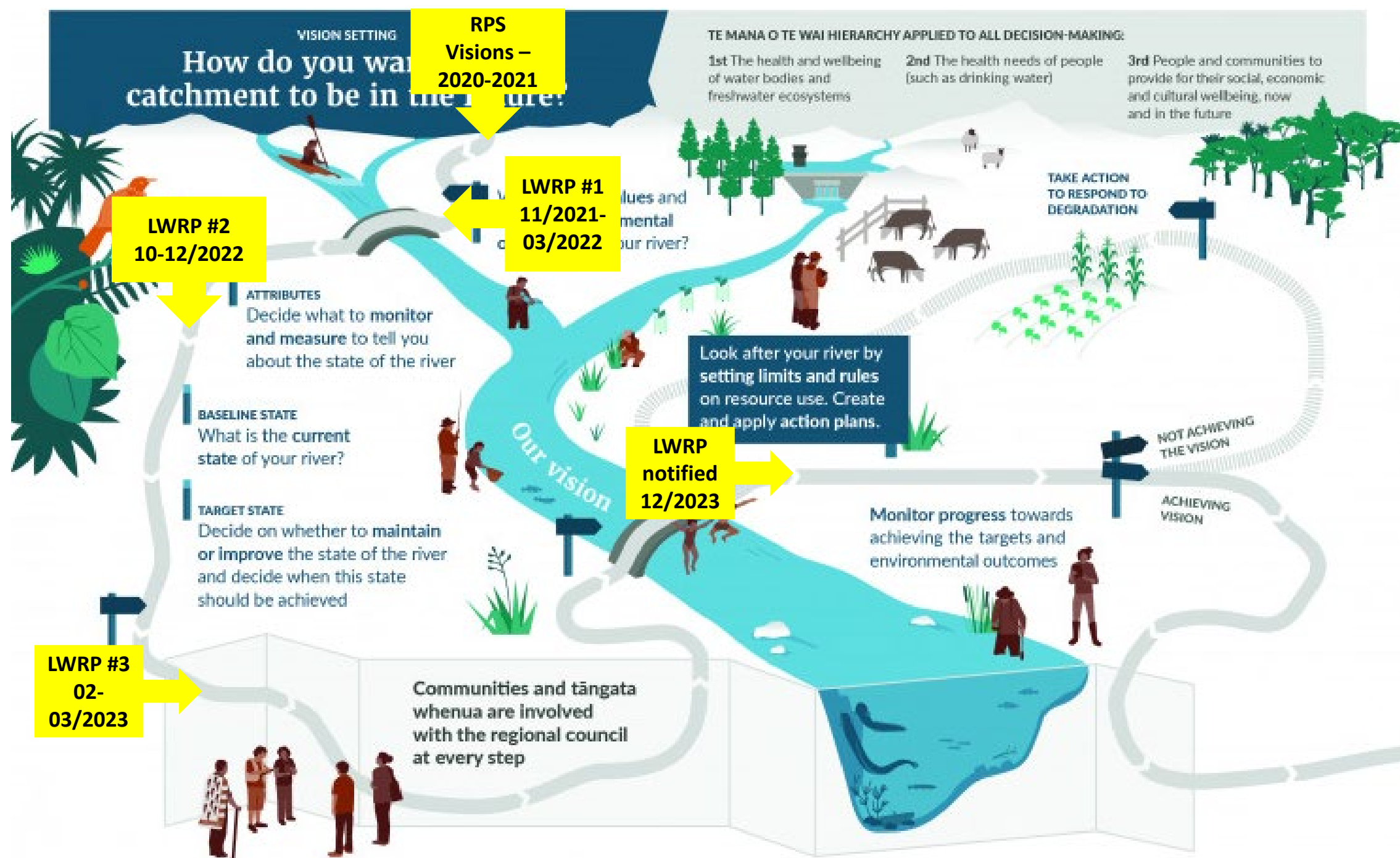
Hydro

Wāhi tūpuna

Mahika kai



The process we're following





Environmental Outcomes

Environmental Outcomes

- ▶ Must be set in the Plan for all values identified
- ▶ Describe what a value should look like
- ▶ Guides decision-making on:
 - ▶ Limits, rules and policies in the Plan
 - ▶ Resource consent applications
- ▶ ORC must set target states for attributes (indicators)

Environmental outcomes - group discussion



Do you agree or disagree with them?



Why?



What other environmental outcomes (for other values) we should include?



Types of actions

Actions

- ▶ Things we can do to achieve environmental outcomes
- ▶ Can be developed into rules and controls in the plan or initiatives like education campaigns
- ▶ Everyone has to play their part. Actions for everyone

E.g.:



Actions - group discussion



Are the possible actions we've identified practicable in your area?



What other actions should we consider?



What issues or unintended consequences do you see in any of these actions?



Closing

- ▶ Thanks for all your input today!
- ▶ We're adding lots of great info on our website
- ▶ We'll be back in early 2023 to update you on this work