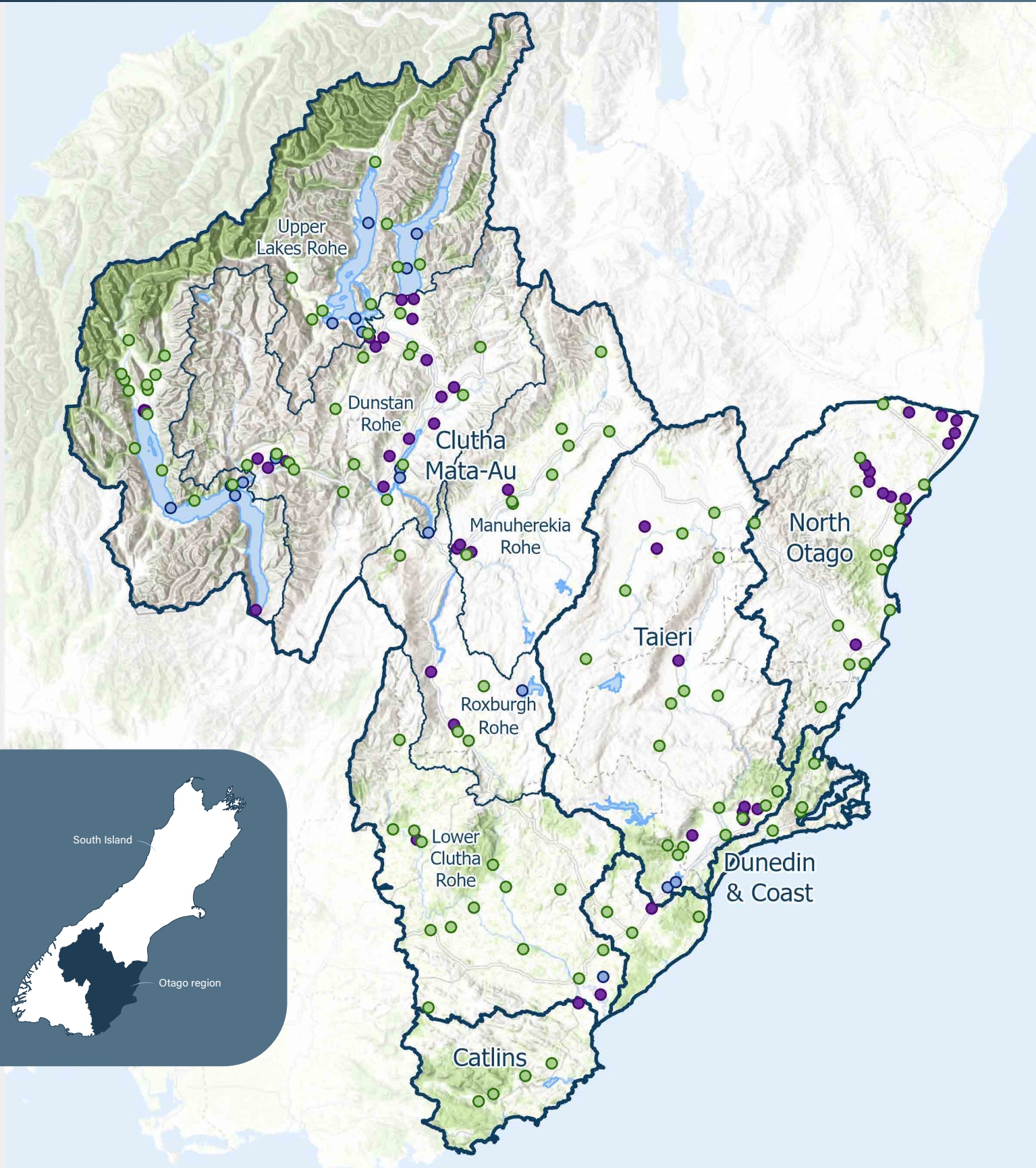


# Water Quality



Otago Region: 2017 – 2022



SoE Locations:   
 ● Lake   
 ● Groundwater   
 ● River   
 □ ROHE   
 □ FMU

Service Layer Credits: LINZ, World Topo Base: Sources: Esri, HERE, DeLorme, InCREMENT P Corp., NPS, NRCAN, Ordnance Survey, © OpenStreetMap contributors, USGS, NGA, NASA, CGIAR, N Robinson, NCEAS, NLS, OS, NMA, Geodatastyrelsen, Rijkswaterstaat, GSA, Geoland, FEMA, Intermap and the GIS user community



Information on this map may not be used for the purposes of any legal disputes. The user should independently verify the accuracy of any information before taking any action in reliance upon it. This map was generated for A4 printing on 10/05/2023 at the scale of 1:1,340,000.

# Quick Results



Band A



Band B



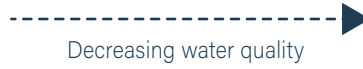
Band C



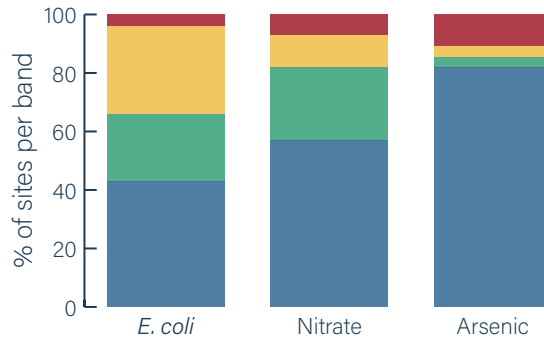
Band D



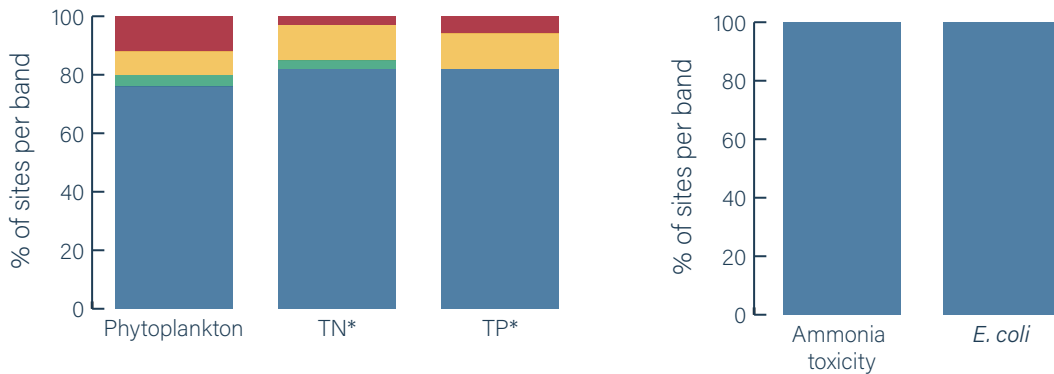
Band E  
(*E. coli* only)



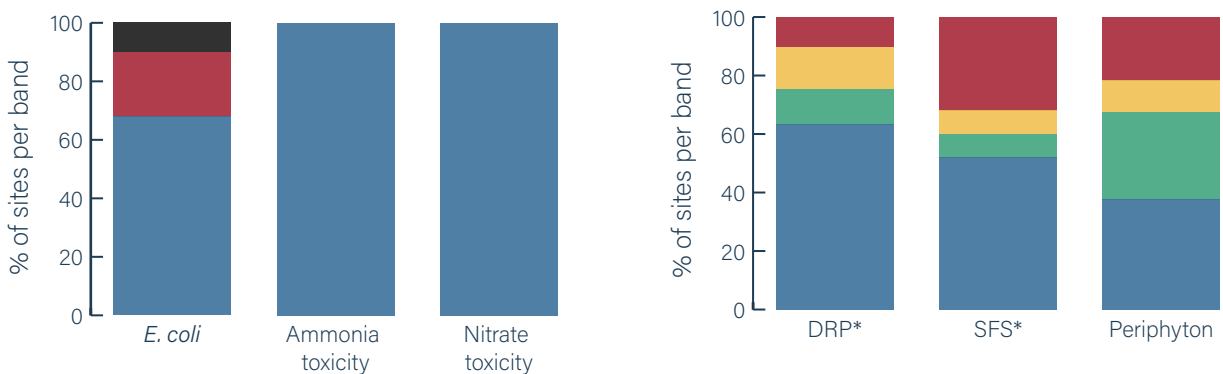
## Groundwater



## Lakes



## Rivers



**\*KEY:**

**DRP:** Dissolved reactive phosphorus

**SFS:** Suspended fine sediment

**TN:** Total nitrogen

**TP:** Total phosphorus