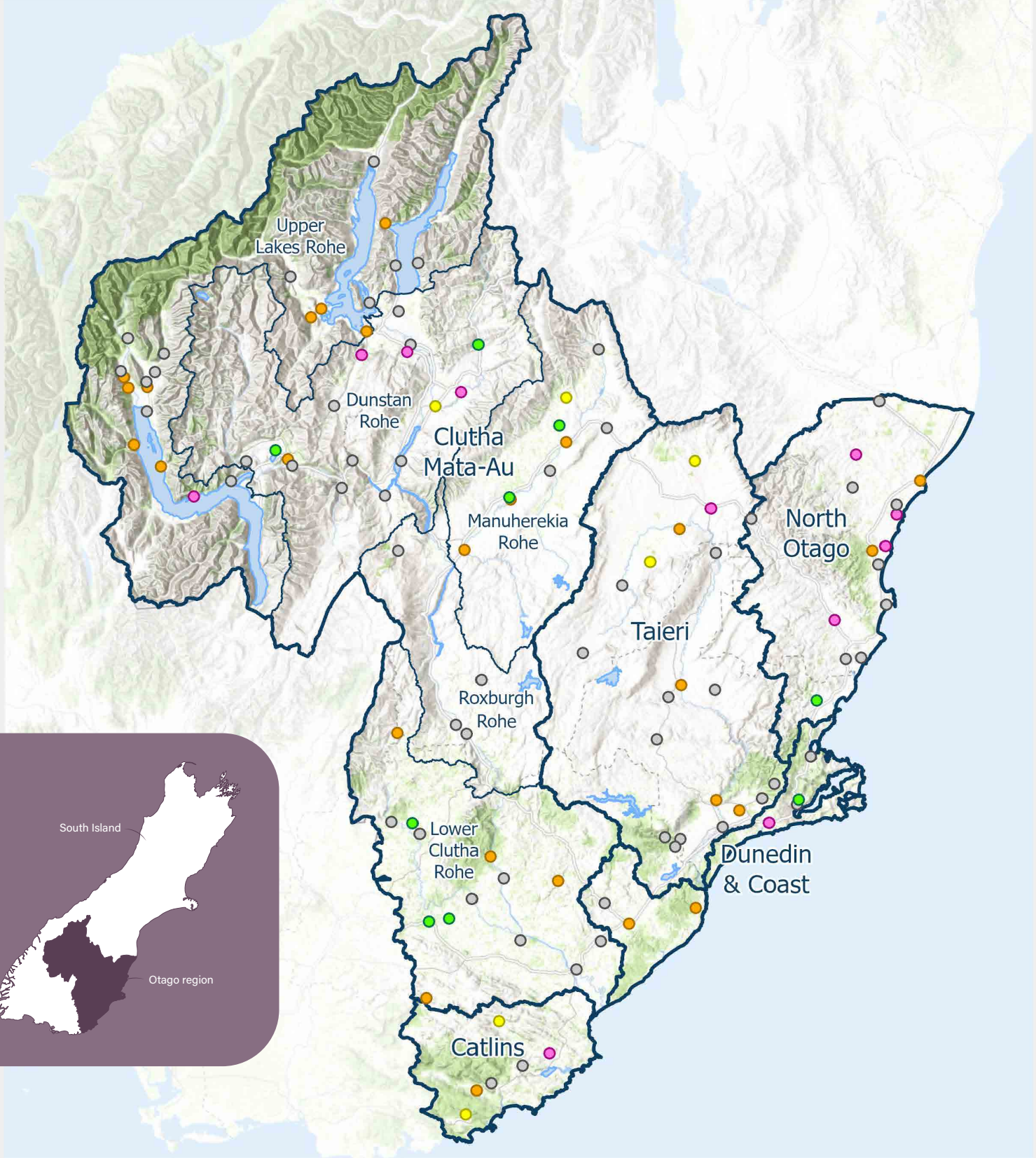


Biomonitoring

Otago Region: 2017 – 2022

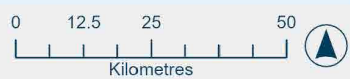


Biomonitoring Sites:

- Macroinvertebrates
- Macro, Periphyton, Deposited Sediment, Habitat Assessment, Ecosystem Metabolism
- Macro, Periphyton, Deposited Sediment, Habitat Assessment, Ecosystem Metabolism

- Macro, Fish IBI
- Macro, Periphyton, Deposited Sediment, Habitat Assessment, Ecosystem Metabolism, Fish IBI
- Fish IBI

- ▭ FMU
- ▭ ROHE



Service Layer Credits: LINZ, World Topo Base: Sources: Esri, HERE, DeLorme, increment P Corp., NPS, NRCAn, Ordnance Survey, © OpenStreetMap contributors, USGS, NGA, NASA, CGIAR, N Robinson, NCEAS, NLS, OS, NMA, Geodatastyrelsen, Rijkswaterstaat, GSA, Geoland, FEMA, Intermap and the GIS user community

Information on this map may not be used for the purposes of any legal disputes. The user should independently verify the accuracy of any information before taking any action in reliance upon it. This map was generated for A4 printing on 9/05/2023 at the scale of 1:1,340,000.

Quick Results



Band A



Band B



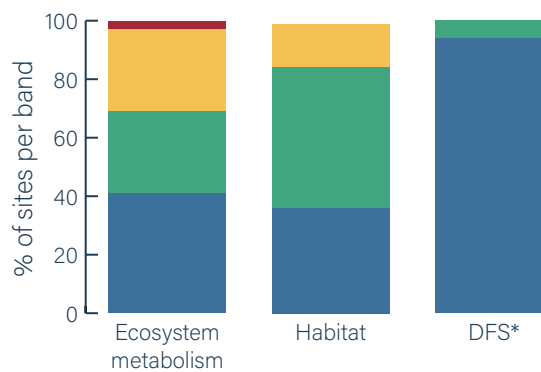
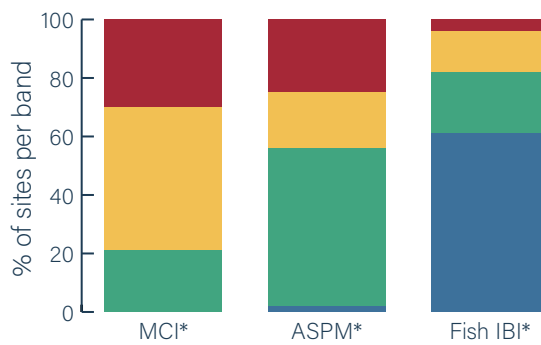
Band C



Band D



Decreasing water quality



***KEY:**

MCI: Macroinvertebrate Community Index

ASPM: Macroinvertebrate Average Score Per Metric

Fish IBI: Fish Index of Biotic Integrity

DFS: Deposited fine sediment