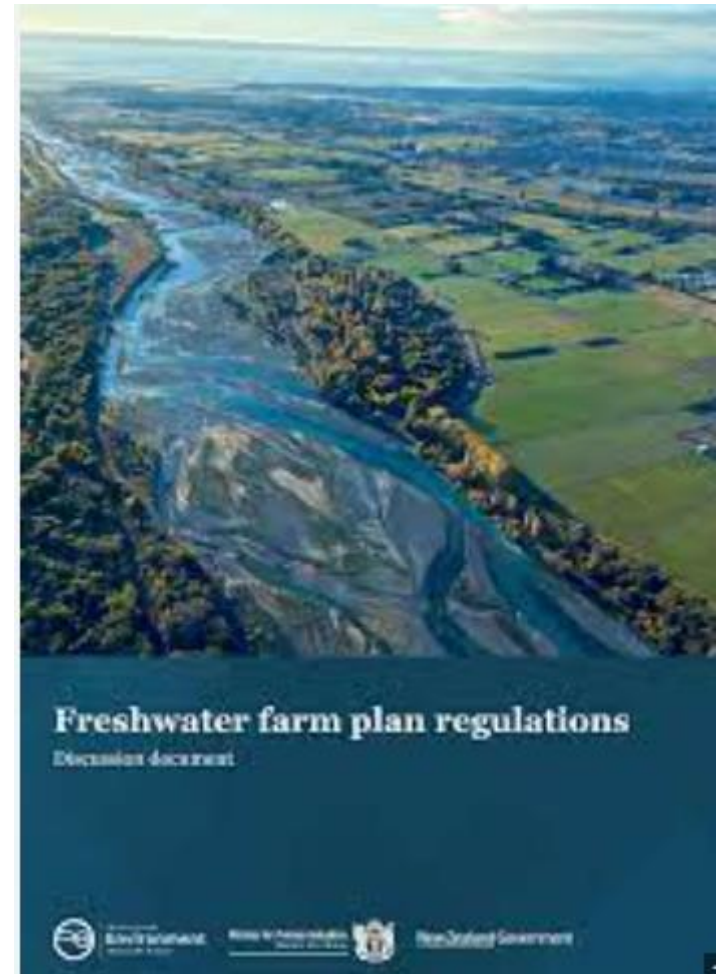


# Freshwater Farm Plans

---

- Part of the Freshwater Package 2020
- National regulations, but property specific
  - Way to identify, manage and reduce impacts on the property
- Required for:
  - All pastoral or arable land more than 20 hectares
  - Horticultural land 5 hectares or more



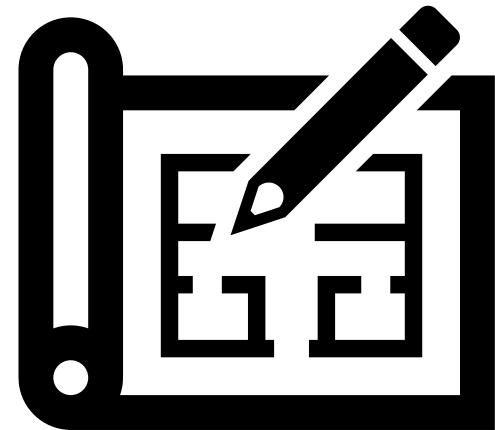
## Farm Plans in Otago

Order	Catchment	Commencement date	Anticipated Number of farms	Approximate area to be covered by FWFPs (hectares)*
1	North Otago FMU	February 2024	756	265,264.22
2	Lower Clutha rohe	August 2024	821	337,327.65
3	Rest Clutha FMU (Upper Lakes, Dunstan, Manuherehia, Roxburgh)	February 2025	913	1,033,254.2
4	Taieri FMU	August 2025	520	484,742.14
4	Catlins FMU	August 2025	185	83,944.39
5	Dunedin and Coast FMU	December 2025	342	86,338.81

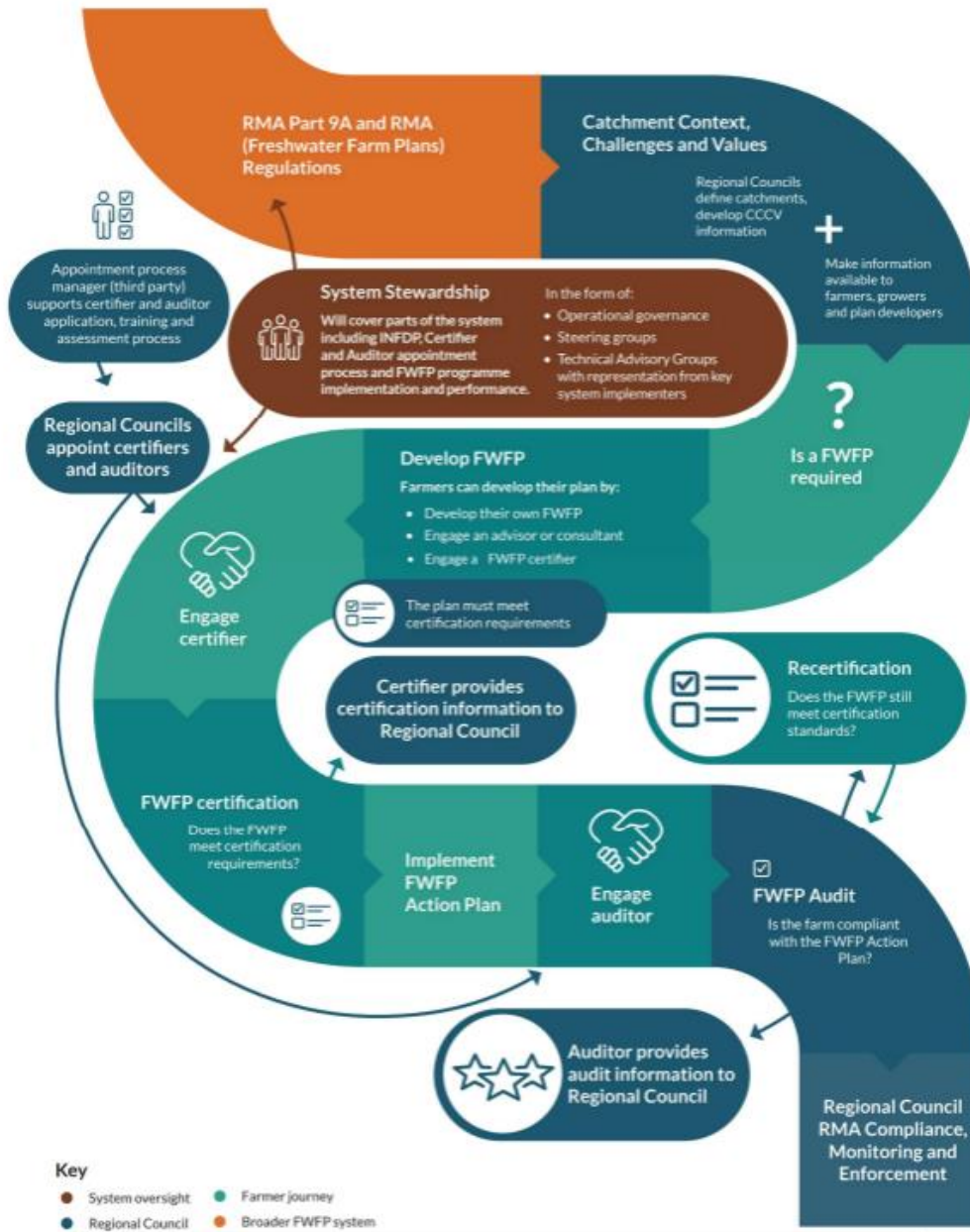
\*note that some of these measurements cover farms which are across FMU boundaries and incorporate parts of farms.

## What is in a farm plan?

- Specified in the Regulations:
  - ✓ Catchment context – including values, ecosystem and community outcomes.
  - ✓ risk identification and impact assessment
  - ✓ actions to mitigate risks
  - ✓ Maps and administrative information
  - ✓ Consent information
  - ✓ Regulation where the FWFP is being used to meet compliance



# FWFP System Overview



**Key**

- System oversight
- Farmer journey
- Regional Council
- Broader FWFP system

# Benefits of Farm Plans

## Benefits of having a freshwater farm plan

Provides a record of past, present and future environmental actions

Can support the development of a integrated farm plan

Links your farm to community or catchment group priorities

Informs future regional plans

May provide assurance to suppliers and customers

May eliminate the need for some resource consents

Can list your existing resource consents and conditions

## Your freshwater farm plan



### Catchment context

Eg. Catchment values  
Ecosystem health  
Community outcomes  
Farm management practices, etc.



### Risk and impact assessment

Eg. Critical source areas  
Fodder crop management  
Wetlands, etc.



### Actions to reduce risks

Eg. Strategic fencing of waterways  
Wetland restoration  
Winter grazing paddock plan, etc.



Certified



Audited

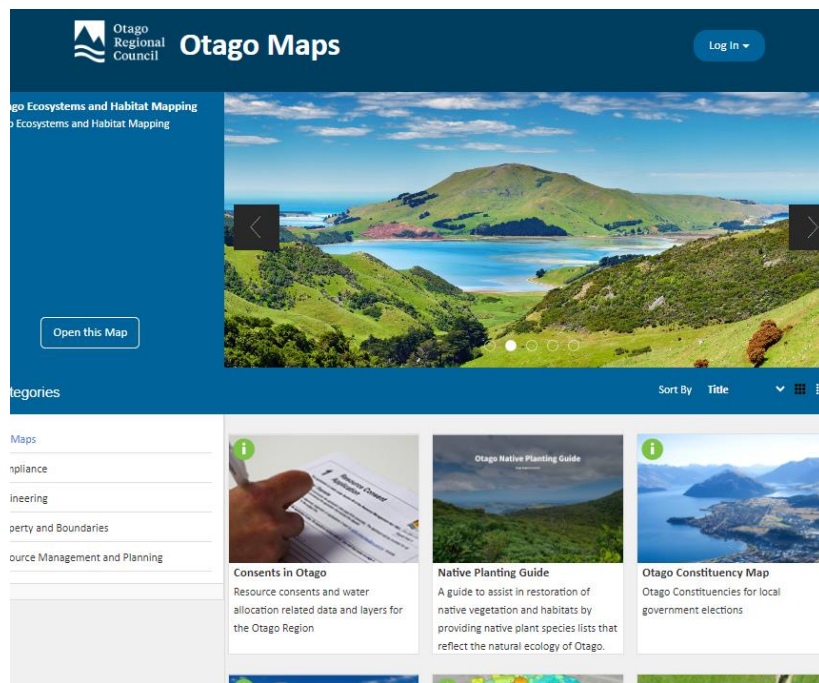
# What does Council need to do?

---

1. Write and provide the Catchment Context, Challenge and Values
  - a) Based on existing information
2. Develop regional specific training for auditors and certifiers
  - a) Have a list of Otago trained ones on the website
3. Develop a CME strategy
4. Support the implementation of FWFPs



# Catchment Challenges, Context and Values



- Displayed spatially
- Based on information we already have
- Includes:
  - Existing local information for example soils, freshwater, priority contaminants etc
  - Identified cultural matters of importance to tangata whenua
  - Freshwater objectives, policies in planning documents

# Certifiers and Certification

---

- Regulations set up requirements they need to meet
- Two step training programme
  - National level, run by AsureQuality
  - Region specific training
- What will they do?
  - Desktop assessment
  - On-farm visit
  - Assessment report
  - Notify Council of certification





# Auditors

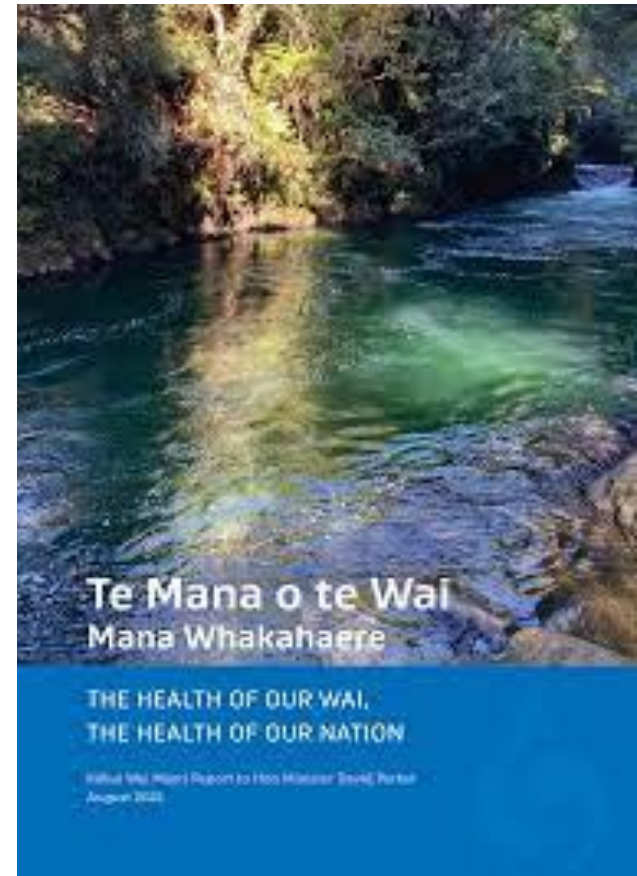
- Plans will need to be audited within 12 months of first being certified
- Assess if the farmer is implementing the FWFP as set out in the certified plan
- Notify the Council of the grade

**Table 1: Audit grading criteria**

Grade	Description	Next audit arranged within
A	All actions categorised in the action plan as regulated actions, catchment actions and supplementary actions have been implemented within the timeframes required under the action plan.	3 years
B	All actions categorised in the action plan as regulated actions and catchment actions have been implemented within the timeframes required under the action plan, but one or more actions categorised as supplementary actions have not been implemented within the required timeframes.	2 years
C	All actions categorised in the action plan as regulated actions have been implemented within the timeframes required under the action plan, but one or more actions categorised as catchment actions have not been implemented within the required timeframes.	1 year
D	One or more actions categorised in the action plan as regulated actions have not been implemented within the timeframes required under the action plan.  One or more actions categorised in the action plan as catchment actions or supplementary actions have still not been implemented within the timeframes required under the action plan following a subsequent audit.	6 months

## Links to Existing Legislation

- National Policy Statement for Freshwater – FWFPs vehicle to give effect
- National Environmental Standards for Freshwater
  - Pathway to confirm permitted activities or to replace need for consent where applicable.



## Links to Existing Regional Plans and Policies

- Regional Plan Water and Regional Policy Statement info to be used to create CCCV.
- Proposed LWRP - potential for incorporation of requirements around FWFPs.
- Integrated Catchment Management work to be incorporated into CCCV when available. Alignment with FWFP rollout where we can.

# Approach to Implementation

---

- Draft plan has been prepared
- Internal working group up and running
  - Variety of Council Teams involved and includes Aukaha and TAMU
- North Otago focus, but also awareness for rest of Otago
- Principles:
  - Collaborative approach – relationships are essential.
  - Provide clarity on the actions that are required to implement FWFPs in Otago.

# Implementation Actions

---



Number of groups to work and communicate with parties: rural professionals; industry groups; stakeholders; catchment groups and rural bankers and agents.



Drop-in sessions



Supporting and running 1:1 on farm sessions.



Holding, or joining webinars or meetings set up by other groups.



Use of social media.



Meetings to explain FWFPs and what they include.

# Implementation



What have we already commenced:

- Meeting with North Otago catchment groups and irrigation companies.
- Industry group briefing on FWFPs.
- Attendance at Hort NZ meeting in Alexandra so growers are aware of FWFPs and what this means for them.
- Ongoing connection with Te Uru Kahika and other regional councils ensuring collaboration, consistency, and efficiency on the implementation of FWFPs.

# Communications Plan

---

## Goals:

- Educate farmers and growers across Otago about what a Freshwater Farm Plan is and to ensure they feel supported through this new process.
- Provide all information relating to this new regulation in an easy to understand format.
- Have a farming and growing community that are actively engaging with ORC and accepting assistance to complete their FWFPs.
- See positive engagement when encouraging attendance of workshops online, good numbers showing up to events and a positively engaging audience.
- See implementation of the actions identified in FWFPs following submission and certification.





# Questions?

---