

Appendix 1.



Image 1. 15th March 2014. Small section of standing water found between dry reaches.



Image 2. 22nd April 2015 Lindis River 1,100 L/s – Southern split of the north braid looking upstream.



Image 3. 22nd April 2015 Lindis River 1,100 L/s - South braid.

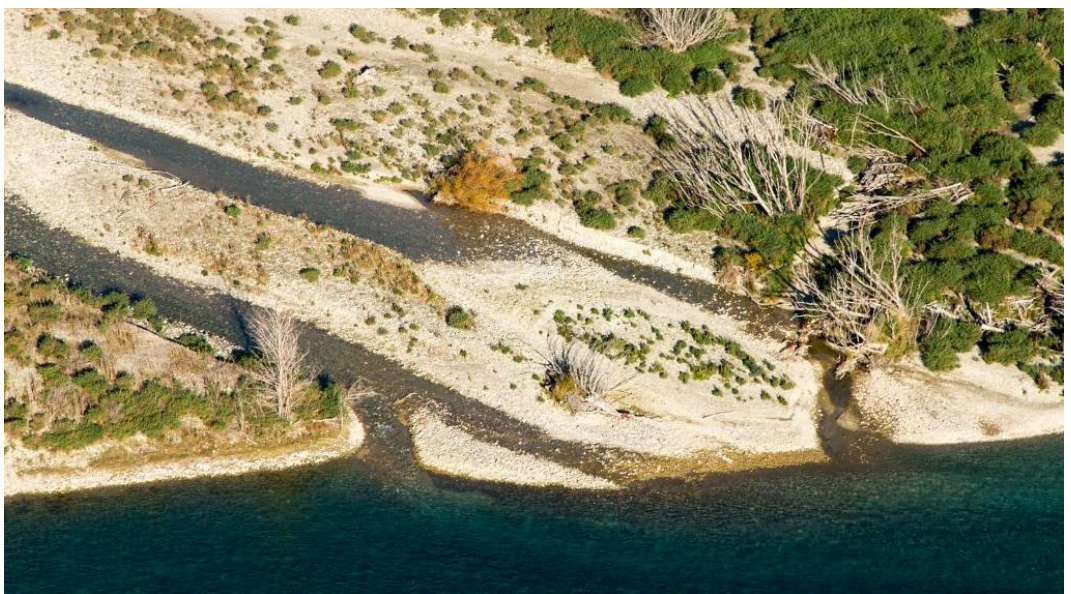


Image 4. Aerial Image 23rd April 2015 - Lindis River 1,100 L/s

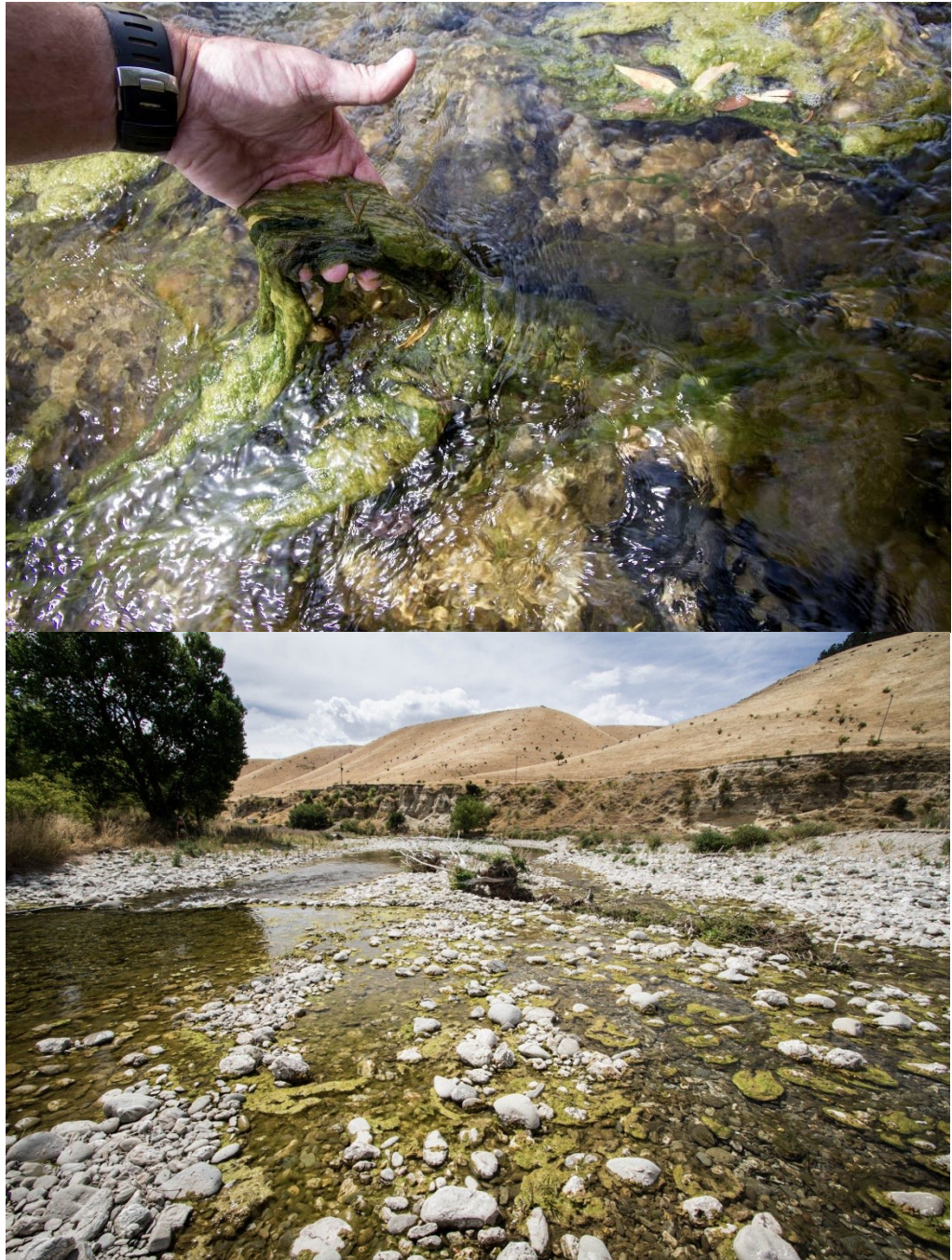


Image 5. Lindis River – Excessive algae growth