

Lindis River

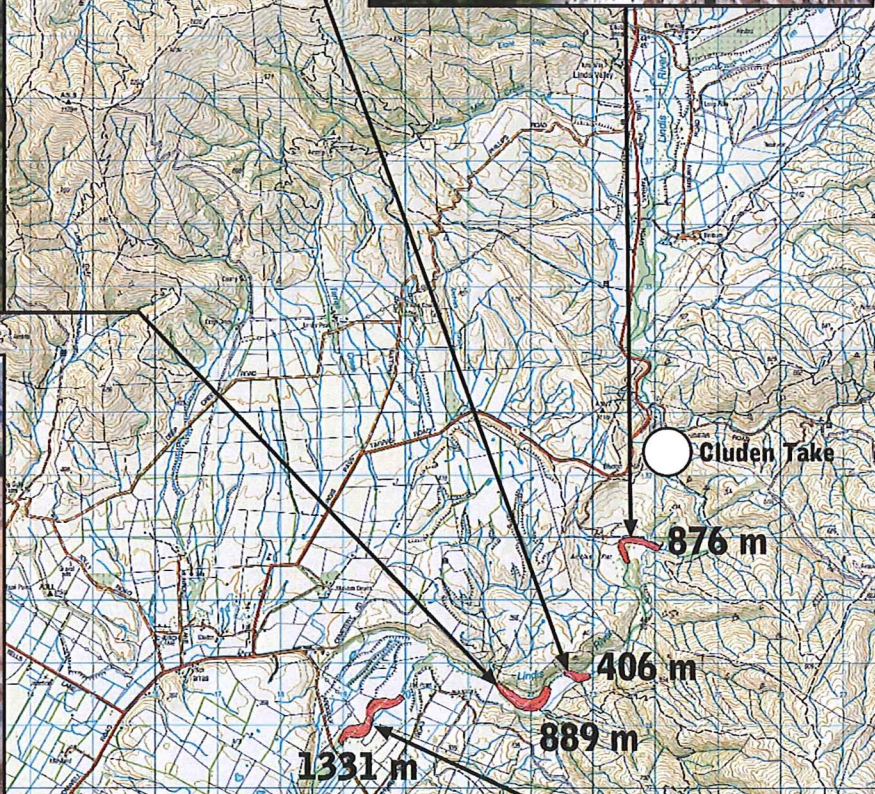
March 2014



Image File - Flow 248 Litres/second

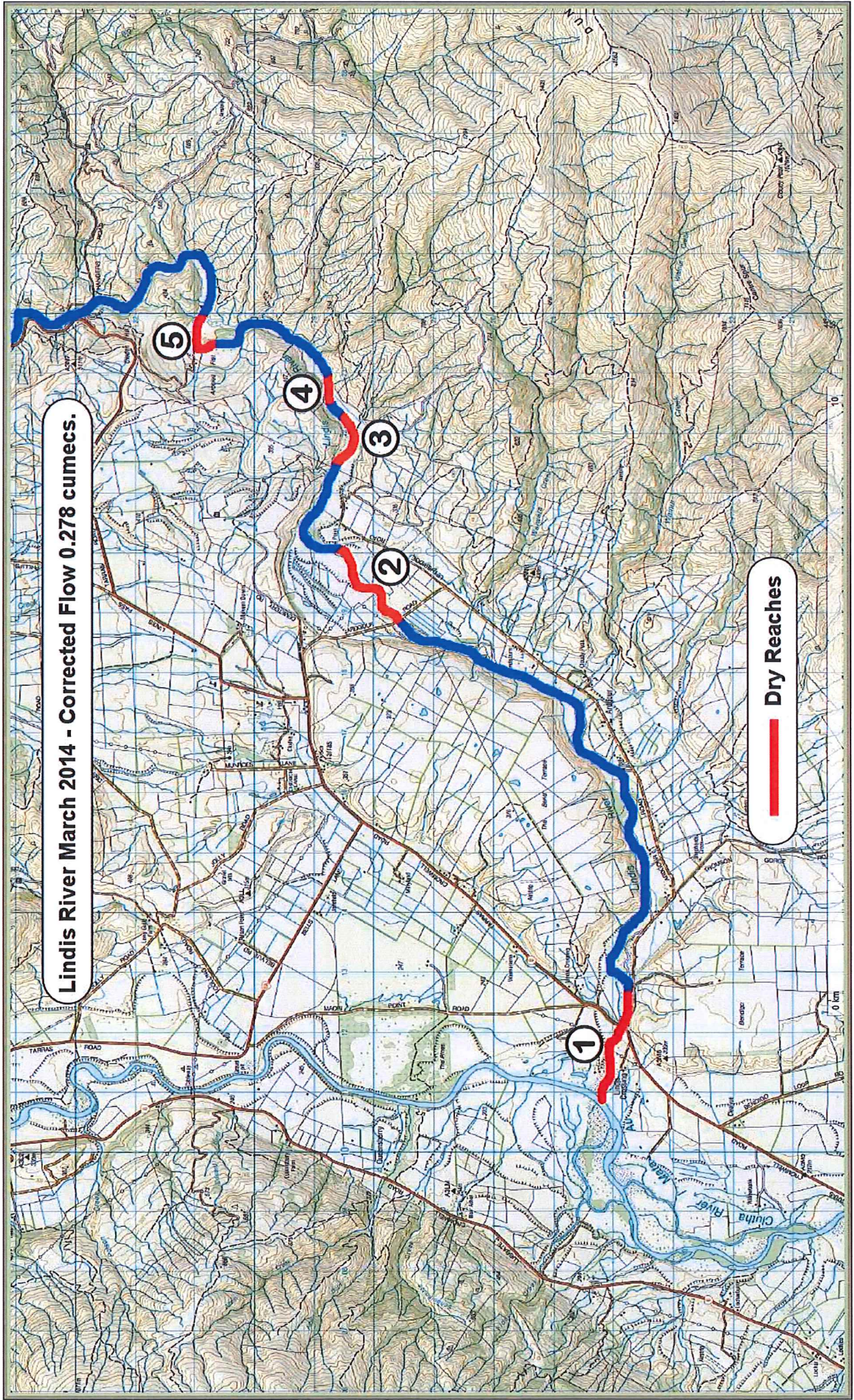
Lindis River - 15th March 2014

- Aerial survey of the Lindis River from the Clutha River confluence, upstream to the Cluden irrigation take.
- Flow during survey - 0.346 cumecs at the Ardgour Flow Recorder.



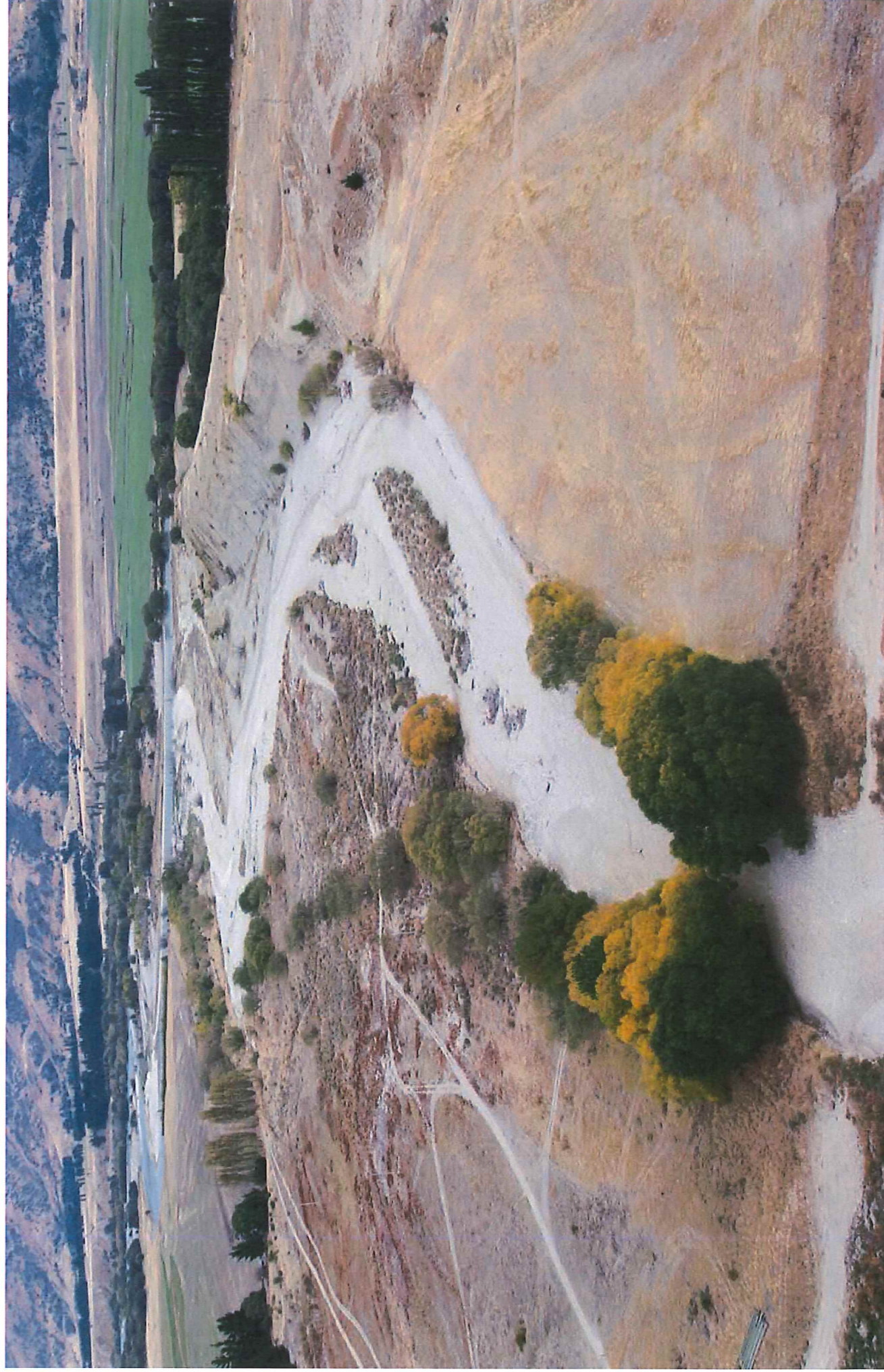
Approximately 21% of the 24.5km reach surveyed was dewatered - dry river bed.

Surface flows appeared negligible along the greater portion of the survey reach.



Lindis River March 2014 – Corrected Flow 278 l/s

1



Lindis River March 2014 – Corrected Flow 278 l/s

2



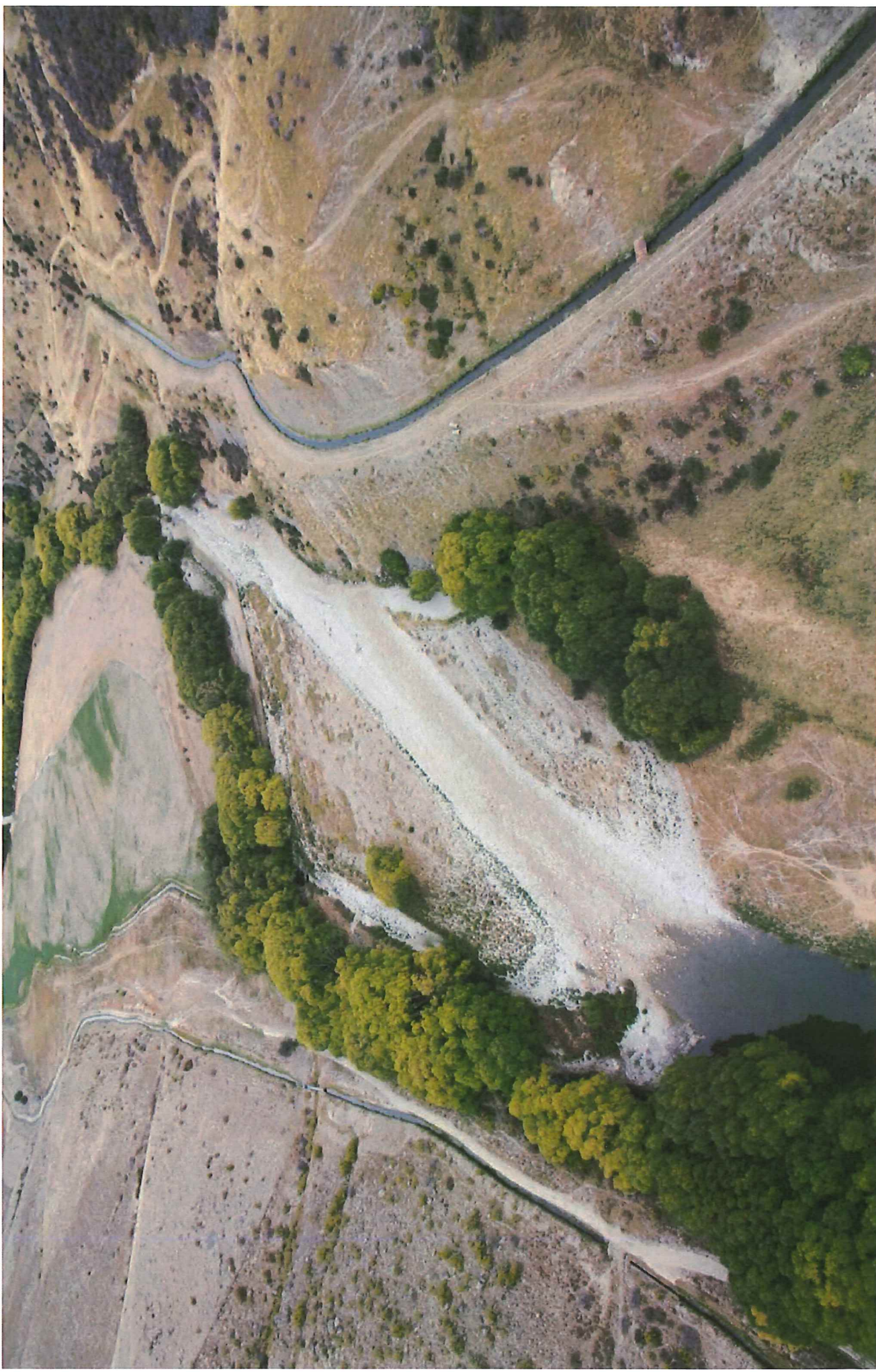
Lindis River March 2014 – Corrected Flow 278 l/s

3



Lindis River March 2014 – Corrected Flow 278 l/s

4



Lindis River March 2014 – Corrected Flow 278 l/s

5

