



# WATER PLAN CHANGES

**Fraser McRae**

Director Policy Planning  
and Resource Management

# Water plan status quo

---

ORC is required to set allocation limits  
(National Policy Statement for Freshwater)

We have in place already:

- 21 minimum flows
- 14 catchments

# Water quantity focus

Plan change program selection:

- Extent of water use
- Improve current regime

A number of plan changes to come over next  
12-24 months

# Minimum flow plan changes

## Development

- Consultation 1 to define values
- Consultation 2 to get feedback on options
- Consultation 3 on preferred plan change option
- Assess social and economic effects of the preferred option



# The plan change

- public notification of Plan Change
- submissions
- further submissions
- hearing
- decision
- appeals



Area	Current stage	Anticipated ORC decision date
Lindis	Environment Court	Mediation ongoing
Manuherikia	Early consultation	Mar 2018
Cardrona	Mid consultation	May 2018
Arrow	Data analysis	Sept 2018
Benger Burn	Data analysis	Nov 2018
Clutha River/Mata-Au	Fish bio-energetic survey	Feb 2019
Low Burn	Data analysis	Jul 2019
Waikouaiti	Scoping	Jul 2020
Hawea	Scoping	Jul 2020
Flow requirements / residual flows*	Early consultation	Under review

*\*see next slide*

# Residual flow requirements

---

## Purpose

To clarify

- what a residual flow is for
- how to calculate them
- where they could be
- the relationship between minimum and residual flows

# Desired outcomes

---

- flexibility for water users
- allowance for downstream users
- fewer residual flow sites
- method to calculate residual flows
- water management groups are supported



# What we've identified

---

## Issue 1

- *Current definition of residual flow addresses only natural character and ecological values*
- *Other parts of the plan refer to leaving water for other users*

**There is no relationship between these two matters**

# What we've identified

---

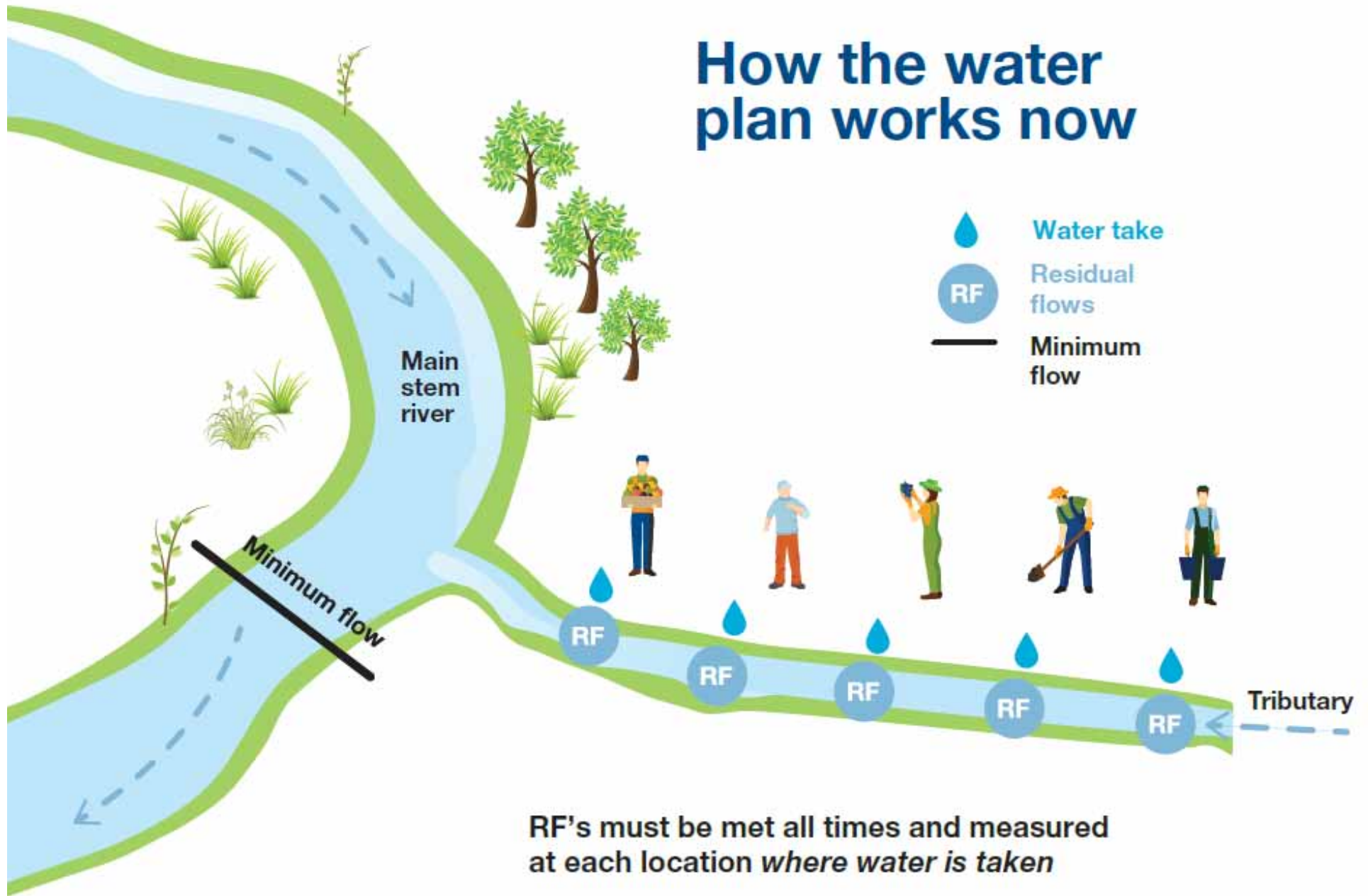
## Issue 2

*Residual flow must be **AT** the point of take*

**Current plan is not flexible enough for group situations where there are multiple points of take**

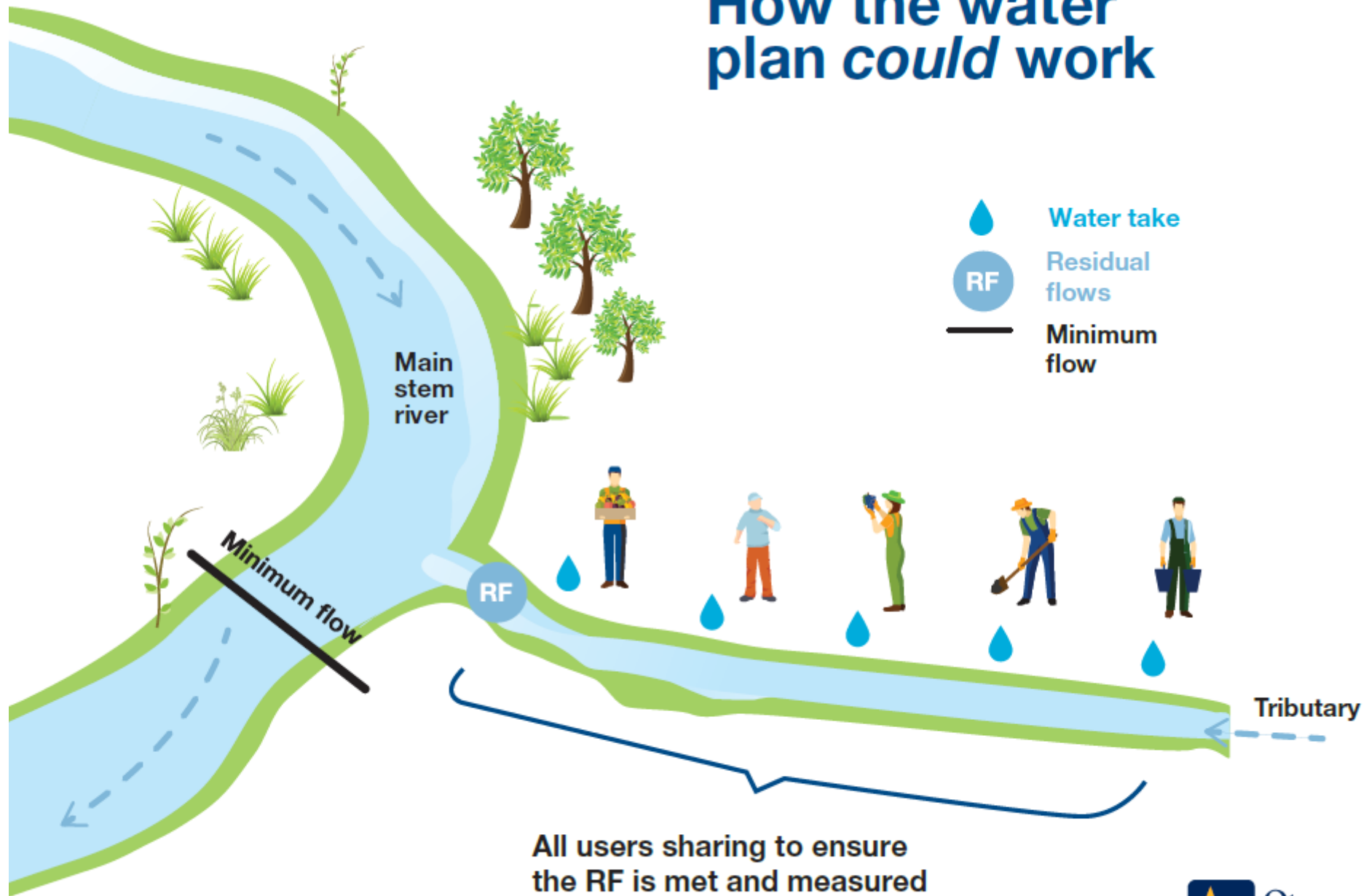
**Place where water is taken may not be suitable for measuring a residual flow**

# How the water plan works now



RF's must be met all times and measured at each location *where water is taken*

# How the water plan *could* work



# What we've identified

---

## **Issue 3**

*There are different views on how residual flows are calculated*

**A method for calculating residual flows may help to clarify this**

# What we are hearing

---

*“There are options proposed and we don’t understand them”*

*“It looks like a done deal”*

# What we are saying

---

We have identified some issues in the plan that don't work well for water management groups

No options to address these are developed yet; we want to do this with you because we value your input

It's too early to say what the detail of the proposed Plan Change will be

# What we are hearing

---

*“Things are going to be worse for us”*



# What we are saying

---

Our intention is to make the residual flow parts of the plan more flexible to help you

We want residual flows to be simpler and easier to understand by permit holders and affected parties

# What we are hearing

---

*“I’ve already got a residual flow and you are going to review it and take water away from me”*

# What we are saying

---

We won't be reviewing permits that already have a residual flow condition

# What we are hearing

---

*“This is going to make it harder to replace my deemed permit”*

# What we are saying

---

We want this plan change to make replacing your deemed permit easier for you

# What we are hearing

---

*“You’re developing minimum flows in my catchment, how does this plan change work with that?”*

# What we are saying

---

The current plan means some people are subject to both a minimum flow and a residual flow.

This won't change

This plan change is the best way to clarify how, or if, a residual flow contributes to a minimum flow

# You are affected if...

---

You take water:

- from a tributary and do not have a residual flow condition on your permit
- from a main stem where there are issues with sustaining flows in particular reaches (rare)



# You are not affected if...

---

You take water:

- from the main stem of a river that has a minimum flow
- from a tributary and you have an existing permit with a residual flow condition

# Where to from here?

---

Development of the plan change is currently on hold

We're planning a Council workshop on the plan change in mid to late May

Public, iwi, and stakeholders may attend

We'll let you know about it through the ODT, our website and facebook page