

# AFFECTED PARTIES



[www.orc.govt.nz](http://www.orc.govt.nz)





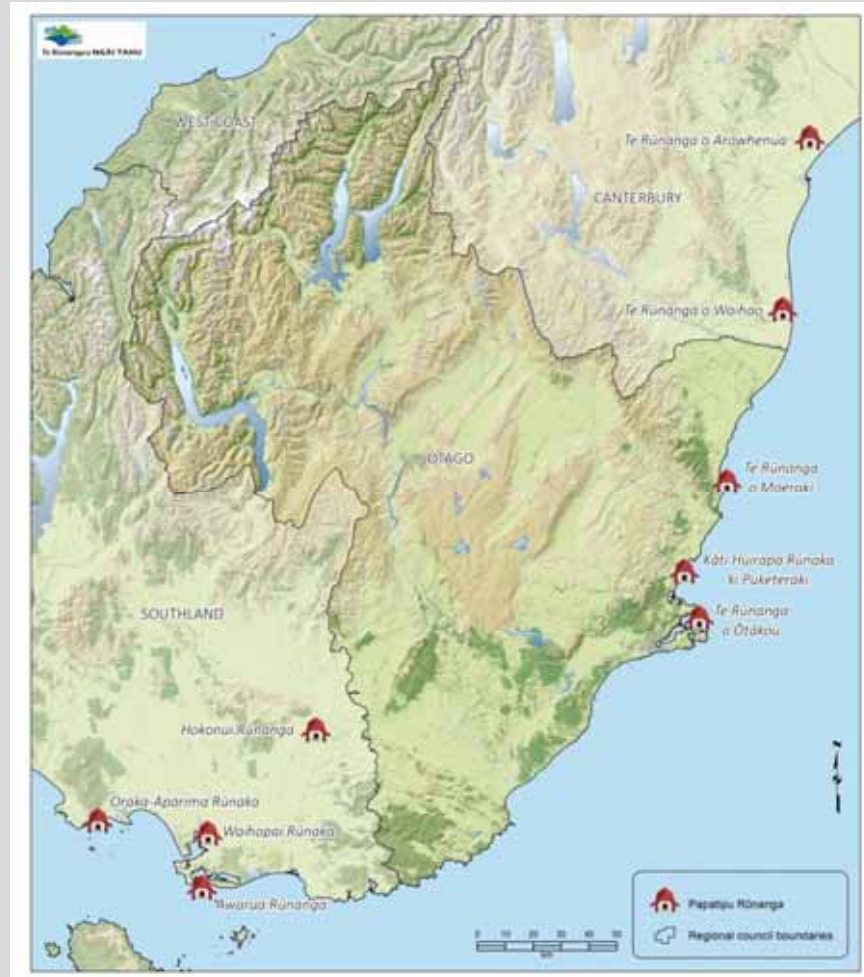
# Kāi Tahu Presentation to Catchment Management Groups 2017





## Ngāi Tahu

- Ngāi Tahu the iwi is a collective of whānau who descend from the five primary hapū of Ngāi Tahu, Ngāti Mamoe and Waitaha.
- Te Rūnanga o Ngāi Tahu represents all of the iwi.
- Kāi Tahu in Otago are represented by Te Rūnanga o Moeraki, Kāti Huirapa Rūnaka ki Puketeraki, Te Rūnanga o Ōtākou and Hokonui Rūnanga.





# KTKO Ltd

KTKO Ltd advocates for Kāi Tahu environmental and cultural aspirations in resource management, facilitates consultation with Kāi Tahu in Otago, and supports Māori health and wellbeing.



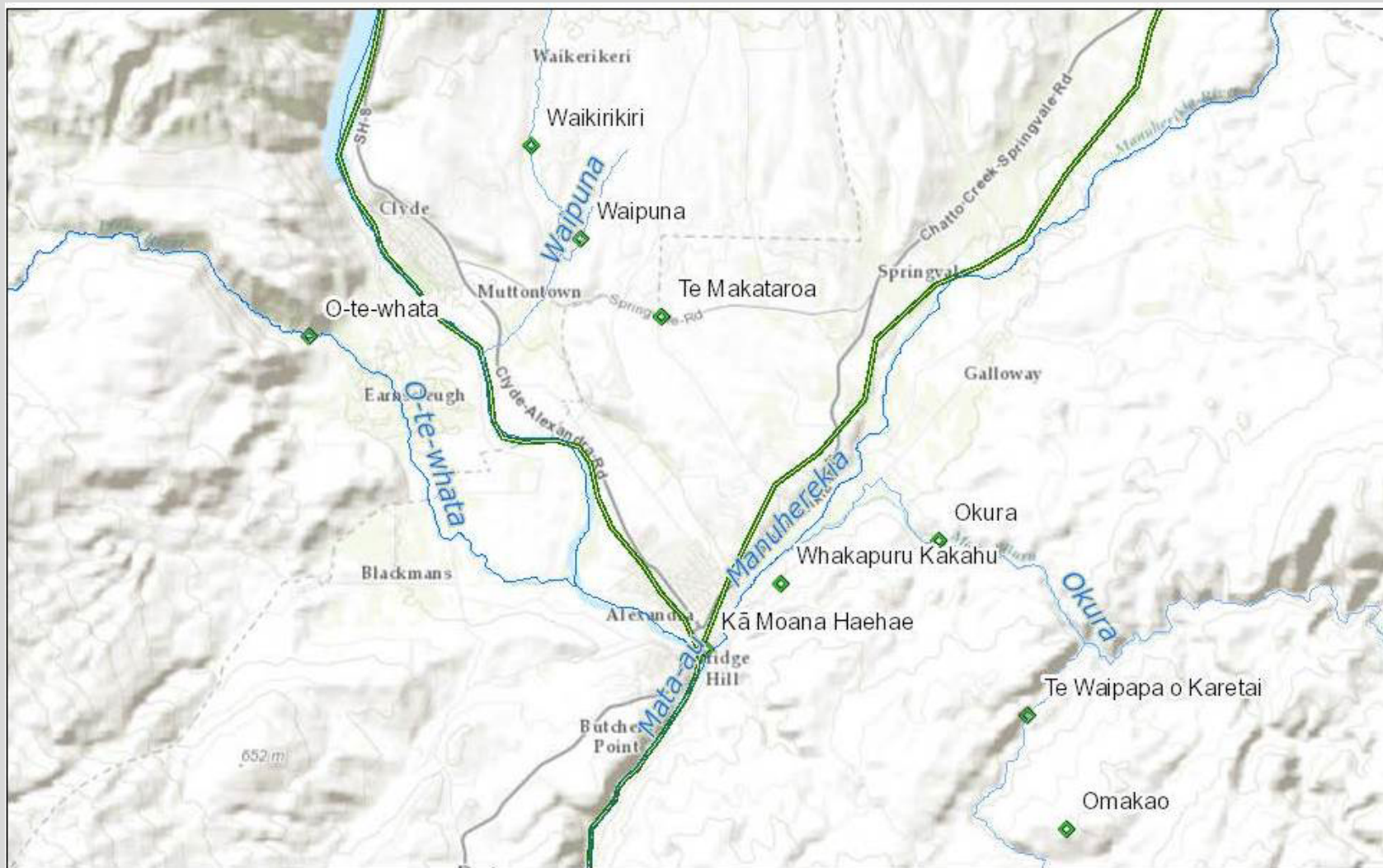
# Historical Association with Central Otago and the Queenstown Lakes











# **Kāi Tahu Association with Wai Māori (Freshwater)**





Kāi Tahu place a high value on rivers that possess a healthy mauri. In assessing the health of freshwater bodies the following attributes are among those important for Kāi Tahu:

- Aesthetic qualities e.g. clarity, natural character
- The health of indigenous flora and fauna
- Life-supporting capacity and healthy ecosystems
- Depth, velocity and variability of flow
- Continuity of flow from the source of the river in the mountains to the sea (ki uta ki tai)
- Fitness for cultural use

# Mahinga Kai





Mahika kai is an all encompassing term that literally means “food workings” and refers to food gathering or sources of food but also embodies the traditions, customs and collection methods.

Mahika kai practices are central to Kāi Tahu culture, as much of the environmental knowledge that has been built up centres on food gathering.

High water quality and water quantity are fundamental to maintaining mahika kai.



# Conclusion

Kāi Tahu will work collaboratively with you to develop a water management framework that provides for the full range of values and interests supported by freshwater, including:

- Abstraction for irrigation
- The intrinsic values of the rivers and tributaries
- Cultural use including mahika kai.
- Continuity of flow – ki uta ki tai (mountains to the sea)