

Attachment 2 - Revised Rates Funding Impact Statement 202627

Rates charged on a capital value basis							
Source of funding and activities	Valuation system and basis of calculation	Matters for differentiation	Est. Revenue sought for 2026-27 including GST	Estimated rates payable including GST			
				Capital Value \$500,000	Capital Value \$1,000,000	Capital Value \$5,000,000	
General rates							
Contributes to all activities of council	Capital value	Where the property is situated	Allocated as:	\$25,961,467			
			Central Otago	\$3,681,819	\$78.49	\$156.97	\$784.85
			Clutha	\$1,749,102	\$83.11	\$166.21	\$831.05
			Dunedin	\$7,081,243	\$78.55	\$157.09	\$785.45
			Queenstown	\$11,930,433	\$80.22	\$160.43	\$802.15
			Waitaki	\$1,518,870	\$82.58	\$165.16	\$825.80
Targeted rates – refer to maps of Flood protection and control works							
Leith flood protection scheme	Capital value	Where the property is situated within the defined scheme area	Allocated as:	\$1,444,846			
			Direct benefit zone	\$722,423	\$214.63	\$429.26	\$2,146.28
			Indirect benefit zone	\$722,423	\$8.32	\$16.65	\$83.24
Lower Taieri flood protection scheme	Capital value	Where the property is situated using approved classifications	Allocated as:	\$1,233,479			
			Lower Taieri Flood Protection WF1	\$353,350	\$709.49	\$1,418.98	\$7,094.90
			Lower Taieri Flood Protection WF2	\$744,446	\$709.49	\$1,418.98	\$7,094.90
			Lower Taieri Flood Protection EF1	\$749	\$15.04	\$30.07	\$150.35
			Lower Taieri Flood Protection EF2	\$956	\$15.04	\$30.07	\$150.35
			Lower Taieri Flood Protection EF3	\$22	\$15.04	\$30.07	\$150.35
			Lower Taieri Flood Protection EF4	\$417	\$15.04	\$30.07	\$150.35
			Lower Taieri Flood Protection EF5	\$3,564	\$15.04	\$30.07	\$150.35
			Lower Taieri Flood Protection EF6	\$38	\$15.04	\$30.07	\$150.35
			Lower Taieri Flood Protection EF7	\$1,614	\$15.04	\$30.07	\$150.35
			Lower Taieri Flood Protection EF8	\$98,054	\$15.04	\$30.07	\$150.35
			Lower Taieri Flood Protection EF9	\$21,188	\$15.04	\$30.07	\$150.35
			Lower Taieri Flood Protection EF10	\$8,985	\$15.04	\$30.07	\$150.35
			Lower Taieri Flood Protection EF12	\$17	\$15.04	\$30.07	\$150.35
Lower Taieri Flood Protection EF13	\$79	\$15.04	\$30.07	\$150.35			
Lower Clutha flood and drainage scheme	Capital value	Where the property is situated using approved classifications	Allocated as:	\$1,267,626			
			Flood Protection & Drainage A	\$54,786	\$3,845.71	\$7,691.42	\$38,457.09
			Flood Protection & Drainage B	\$210,093	\$1,526.97	\$3,053.95	\$15,269.73
			Flood Protection & Drainage C	\$386,934	\$1,442.14	\$2,884.28	\$14,421.41
			Flood Protection & Drainage D	\$70,013	\$904.87	\$1,809.75	\$9,048.73
			Flood Protection & Drainage E	\$65,638	\$480.71	\$961.43	\$4,807.14
			Flood Protection & Drainage F	\$47,630	\$56.55	\$113.11	\$565.55
			Flood Protection & Drainage U1	\$7,738	\$1,526.97	\$3,053.95	\$15,269.73
			Flood Protection & Drainage U2	\$307,485	\$508.99	\$1,017.98	\$5,089.91
			Flood Protection & Drainage U3	\$26,003	\$113.11	\$226.22	\$1,131.09
			Flood Protection & Drainage U4	\$91,307	\$84.83	\$169.66	\$848.32
Tokomairiro drainage scheme	Capital value	Where the property is situated within the defined scheme area	Allocated as:	\$176,560			
			Tokomairiro Drainage A	\$1,886	\$87.24	\$174.48	\$872.42
			Tokomairiro Drainage B	\$5,433	\$87.24	\$174.48	\$872.41
			Tokomairiro Drainage C	\$8,148	\$87.24	\$174.48	\$872.41
			Tokomairiro Drainage D	\$19,655	\$87.24	\$174.48	\$872.41
			Tokomairiro Drainage E	\$21,429	\$87.24	\$174.48	\$872.41
			Tokomairiro Drainage F	\$70,572	\$87.24	\$174.48	\$872.41
Tokomairiro Drainage U1	\$49,437	\$48.61	\$97.22	\$486.11			
River and waterway management							
City and district waterway and river management	Capital value	Where the property is situated	Allocated as:	\$2,880,631			
			Central Otago	\$612,739	\$13.06	\$26.12	\$130.61
			Clutha	\$558,153	\$26.52	\$53.04	\$265.20
			Dunedin	\$305,375	\$3.39	\$6.77	\$33.87
			Waitaki	\$752,813	\$40.93	\$81.86	\$409.30
			Queenstown Lakes	\$651,551	\$4.38	\$8.76	\$43.81
Catchment management rate							
	Capital value	Where the property is situated	Allocated as:	\$6,609,049			
			Central Otago	\$937,286	\$19.98	\$39.96	\$199.79
			Clutha	\$445,272	\$21.16	\$42.31	\$211.56
			Dunedin	\$1,802,682	\$20.00	\$39.99	\$199.95
			Waitaki	\$386,661	\$21.02	\$42.04	\$210.22
			Queenstown Lakes	\$3,037,148	\$20.42	\$40.84	\$204.21
Transport							
Dunedin passenger transport	Capital value	Where the property is situated within the defined scheme area, and differentiated on basis of land use:	Allocated as:	\$11,847,056			
			Class A	\$3,137,287	\$477.74	\$955.48	\$4,777.41
			Class B				
			* Dunedin	\$8,644,559	\$127.40	\$254.79	\$1,273.97
			* Waitaki	\$65,210	\$133.94	\$267.88	\$1,339.40
Wakatipu passenger transport	Capital value	Where the property is situated within the defined scheme area, and differentiated on basis of land use:	Allocated as:	\$4,985,806			
			Class A	\$1,220,146	\$100.84	\$201.69	\$1,008.45
			Class B	\$3,765,660.00	\$50.42	\$100.84	\$504.22

Attachment 2 - Revised Rates Funding Impact Statement 202627

Rates charged on a capital value basis							
Source of funding and activities	Valuation system and basis of calculation	Matters for differentiation	Est. Revenue sought for 2026-27 including GST	Estimated rates payable including GST			
				Capital Value \$500,000	Capital Value \$1,000,000	Capital Value \$5,000,000	
General rates							
Contributes to all activities of council	Capital value	Where the property is situated	Allocated as:	\$25,961,467			
			Central Otago	\$3,681,819	\$78.49	\$156.97	\$784.85
			Clutha	\$1,749,102	\$83.11	\$166.21	\$831.05
			Dunedin	\$7,081,243	\$78.55	\$157.09	\$785.45
			Queenstown	\$11,930,433	\$80.22	\$160.43	\$802.15
			Waitaki	\$1,518,870	\$82.58	\$165.16	\$825.80
Targeted rates – refer to maps of Flood protection and control works							
Leith flood protection scheme	Capital value	Where the property is situated within the defined scheme area	Allocated as:	\$1,444,846			
			Direct benefit zone	\$722,423	\$214.63	\$429.26	\$2,146.28
			Indirect benefit zone	\$722,423	\$8.32	\$16.65	\$83.24
Lower Taieri flood protection scheme	Capital value	Where the property is situated using approved classifications	Allocated as:	\$1,233,479			
			Lower Taieri Flood Protection WF1	\$353,350	\$709.49	\$1,418.98	\$7,094.90
			Lower Taieri Flood Protection WF2	\$744,446	\$709.49	\$1,418.98	\$7,094.90
			Lower Taieri Flood Protection EF1	\$749	\$15.04	\$30.07	\$150.35
			Lower Taieri Flood Protection EF2	\$956	\$15.04	\$30.07	\$150.35
			Lower Taieri Flood Protection EF3	\$22	\$15.04	\$30.07	\$150.35
			Lower Taieri Flood Protection EF4	\$417	\$15.04	\$30.07	\$150.35
			Lower Taieri Flood Protection EF5	\$3,564	\$15.04	\$30.07	\$150.35
			Lower Taieri Flood Protection EF6	\$38	\$15.04	\$30.07	\$150.35
			Lower Taieri Flood Protection EF7	\$1,614	\$15.04	\$30.07	\$150.35
			Lower Taieri Flood Protection EF8	\$98,054	\$15.04	\$30.07	\$150.35
			Lower Taieri Flood Protection EF9	\$21,188	\$15.04	\$30.07	\$150.35
			Lower Taieri Flood Protection EF10	\$8,985	\$15.04	\$30.07	\$150.35
			Lower Taieri Flood Protection EF12	\$17	\$15.04	\$30.07	\$150.35
Lower Taieri Flood Protection EF13	\$79	\$15.04	\$30.07	\$150.35			
Lower Clutha flood and drainage scheme	Capital value	Where the property is situated using approved classifications	Allocated as:	\$1,267,626			
			Flood Protection & Drainage A	\$54,786	\$3,845.71	\$7,691.42	\$38,457.09
			Flood Protection & Drainage B	\$210,093	\$1,526.97	\$3,053.95	\$15,269.73
			Flood Protection & Drainage C	\$386,934	\$1,442.14	\$2,884.28	\$14,421.41
			Flood Protection & Drainage D	\$70,013	\$904.87	\$1,809.75	\$9,048.73
			Flood Protection & Drainage E	\$65,638	\$480.71	\$961.43	\$4,807.14
			Flood Protection & Drainage F	\$47,630	\$56.55	\$113.11	\$565.55
			Flood Protection & Drainage U1	\$7,738	\$1,526.97	\$3,053.95	\$15,269.73
			Flood Protection & Drainage U2	\$307,485	\$508.99	\$1,017.98	\$5,089.91
			Flood Protection & Drainage U3	\$26,003	\$113.11	\$226.22	\$1,131.09
			Flood Protection & Drainage U4	\$91,307	\$84.83	\$169.66	\$848.32
Tokomairiro drainage scheme	Capital value	Where the property is situated within the defined scheme area	Allocated as:	\$176,560			
			Tokomairiro Drainage A	\$1,886	\$87.24	\$174.48	\$872.42
			Tokomairiro Drainage B	\$5,433	\$87.24	\$174.48	\$872.41
			Tokomairiro Drainage C	\$8,148	\$87.24	\$174.48	\$872.41
			Tokomairiro Drainage D	\$19,655	\$87.24	\$174.48	\$872.41
			Tokomairiro Drainage E	\$21,429	\$87.24	\$174.48	\$872.41
			Tokomairiro Drainage F	\$70,572	\$87.24	\$174.48	\$872.41
Tokomairiro Drainage U1	\$49,437	\$48.61	\$97.22	\$486.11			
River and waterway management							
City and district waterway and river management	Capital value	Where the property is situated	Allocated as:	\$2,880,631			
			Central Otago	\$612,739	\$13.06	\$26.12	\$130.61
			Clutha	\$558,153	\$26.52	\$53.04	\$265.20
			Dunedin	\$305,375	\$3.39	\$6.77	\$33.87
			Waitaki	\$752,813	\$40.93	\$81.86	\$409.30
			Queenstown Lakes	\$651,551	\$4.38	\$8.76	\$43.81
Catchment management rate							
	Capital value	Where the property is situated	Allocated as:	\$6,609,049			
			Central Otago	\$937,286	\$19.98	\$39.96	\$199.79
			Clutha	\$445,272	\$21.16	\$42.31	\$211.56
			Dunedin	\$1,802,682	\$20.00	\$39.99	\$199.95
			Waitaki	\$386,661	\$21.02	\$42.04	\$210.22
			Queenstown Lakes	\$3,037,148	\$20.42	\$40.84	\$204.21
Transport							
Dunedin passenger transport	Capital value	Where the property is situated within the defined scheme area, and differentiated on basis of land use:	Allocated as:	\$11,847,056			
			Class A	\$3,137,287	\$477.74	\$955.48	\$4,777.41
			Class B				
			* Dunedin	\$8,644,559	\$127.40	\$254.79	\$1,273.97
		Class A – non-residential	* Waitaki	\$65,210	\$133.94	\$267.88	\$1,339.40
		Class B - others					
Wakatipu passenger transport	Capital value	Where the property is situated within the defined scheme area, and differentiated on basis of land use:	Allocated as:	\$4,985,806			
			Class A	\$1,220,146	\$100.84	\$201.69	\$1,008.45
			Class B	\$3,765,660.00	\$50.42	\$100.84	\$504.22
		Class A – non-residential					
		Class B - others					

Attachment 2 - Revised Rates Funding Impact Statement 202627

Source of funding and activities	Valuation system and basis of calculation	Matters for differentiation	Est. Revenue sought for 2026-27 including GST	Estimated rates payable including GST			
				Capital Value	Capital Value	Capital Value	
				\$500,000	\$1,000,000	\$5,000,000	
Rates charged in a fixed rate basis (per property)							
Source of funding and activities	Valuation system and basis of calculation	Matters for differentiation	Est. Revenue sought for 2026-27 including GST	Estimated rates payable including GST			
Uniform Annual General Charge							
Contributes to all activities of council	Fixed charge per rating unit		Calculated as \$x per rating unit	\$8,653,822	\$69.71	\$69.71	\$69.71
Wilding trees	Fixed charge per rating unit		Calculated as \$x per rating unit	\$300,150	\$2.42	\$2.42	\$2.42
Emergency management	Fixed charge per rating unit		Calculated as \$x per rating unit	\$4,732,250	\$38.12	\$38.12	\$38.12
Navigational safety	Fixed charge per rating unit	Charged to all district excluding Queenstown Lakes who have a separate harbourmaster service.	Calculated as \$x per rating unit	\$1,074,415	\$11.71	\$11.71	\$11.71
Rates charged on a land value basis							
Source of funding and activities	Valuation system and basis of calculation	Matters for differentiation	Est. Revenue sought for 2026-27 including GST	Estimated rates payable including GST			
				Land Value	Land Value	Land Value	
				\$350,000	\$750,000	\$2,000,000	
Biosecurity							
City and district pest management plan	Land value	Where the property is situated	Allocated as:	\$5,782,200			
			Central Otago	\$703,666	\$22.46	\$48.14	\$128.37
			Clutha	\$447,277	\$23.42	\$50.18	\$133.83
			Dunedin	\$1,463,170	\$22.43	\$48.07	\$128.19
			Queenstown	\$2,845,709	\$22.81	\$48.88	\$130.35
			Waitaki	\$322,377	\$23.18	\$49.67	\$132.46
Rates charged on a land area basis							
Source of funding and activities	Valuation system and basis of calculation	Matters for differentiation	Est. Revenue sought for 2026-27 including GST	Estimated rates payable including GST			
				Land Area	Land Area	Land Area	
				0.5 hectares	2 hectare	5 hectares	
East Taieri drainage scheme	Fixed charge per hectare	Where the property is situated within the defined scheme area	Allocated as:	\$787,956			
			East Taieri Drainage - ED1	\$150,812	\$82.89	\$331.57	\$828.93
			East Taieri Drainage - ED2	\$130,969	\$82.89	\$331.57	\$828.93
			East Taieri Drainage - ED4	\$18,678	\$82.89	\$331.57	\$828.93
			East Taieri Drainage - ED5	\$161,971	\$82.89	\$331.57	\$828.93
			East Taieri Drainage - ED7	\$13,532	\$82.89	\$331.57	\$828.93
			East Taieri Drainage - ED8	\$139,655	\$82.89	\$331.57	\$828.93
			East Taieri Drainage - ED9	\$110,949	\$82.89	\$331.57	\$828.93
			East Taieri Drainage - ED10	\$61,390	\$82.89	\$331.57	\$828.93
West Taieri drainage scheme	Fixed charge per hectare	Where the property is situated within the defined scheme area	Allocated as:	\$999,883			
			West Taieri Drainage - WD1	\$548,546	\$64.83	\$259.32	\$648.30
			West Taieri Drainage - WD2	\$335,402	\$64.83	\$259.32	\$648.30
			West Taieri Drainage - WD3	\$39,452	\$64.83	\$259.32	\$648.30
			West Taieri Drainage - WD4	\$14,634	\$64.83	\$259.32	\$648.30
			West Taieri Drainage - WD5	\$61,849	\$64.83	\$259.32	\$648.30

Attachment to the Rates Resolution Report 2026/27								
Dunedin City	Amount of rate per capital value							
Dunedin Residential	\$500,000		\$800,000		\$1,200,000		\$2,000,000	
<i>Assumed Land Value - Biosecurity rate</i>	\$200,000		\$500,000		\$750,000		\$1,500,000	
	2026/2027	2025/2026	2026/2027	2025/2026	2026/2027	2025/2026	2026/2027	2025/2026
Uniform regional rates								
Uniform annual general charge	69.71	73.48	69.71	73.48	69.71	73.48	69.71	69.36
Emergency management uniform rate	38.12	37.73	38.12	37.73	38.12	37.73	38.12	35.63
Wilding trees uniform rate	2.42	2.41	2.42	2.41	2.42	2.41	2.42	2.41
Navigational safety uniform rate	11.71	11.18	11.71	11.18	11.71	11.18	11.71	10.68
	121.96	124.80	121.96	124.80	121.96	124.80	121.96	118.08
Variable charges (capital value/land value/hectares)								
General rate (CV)	78.55	83.78	125.67	134.04	188.51	201.06	314.18	335.10
Catchment Management Rate (CV)	20.00	19.37	31.99	30.98	47.99	46.48	79.98	77.46
River & Waterway Management (CV)	3.39	3.42	5.42	5.46	8.13	8.20	13.55	13.66
Biosecurity (LV)	12.82	12.33	32.05	30.84	48.07	46.25	96.14	92.51
Leith scheme - indirect benefit (CV)	8.32	8.40	13.32	13.43	19.98	20.15	33.30	33.58
Transport - class B (CV)	127.40	131.62	203.84	210.59	305.75	315.89	509.59	526.48
	250.47	258.90	412.29	425.35	618.43	638.02	1,046.74	1,078.79
Total rates including Leith scheme indirect rate	372.43	383.70	534.25	550.15	740.39	762.82	1,168.70	1,196.87
Add the Leith scheme direct benefit rate margin (CV)	214.63	212.01	343.40	339.21	515.11	508.81	858.51	848.02
Total for properties in the Leith Direct Benefit zone	578.73	587.31	864.33	875.92	1,235.52	1,251.48	1,993.91	2,011.31

Attachment to the Rates Resolution Report 2026/27								
Dunedin City		Amount of rate per capital value						
Mosgiel Residential	\$500,000		\$800,000		\$1,200,000		\$2,000,000	
Assumed Land Value - Biosecurity rate	\$200,000		\$500,000		\$750,000		\$1,500,000	
Assumed hectares	0.050		0.065		0.500		1.000	
	2026/2027	2025/2026	2026/2027	2025/2026	2026/2027	2025/2026	2026/2027	2025/2026
Uniform regional charges								
Uniform annual general charge	69.71	73.48	69.71	73.48	69.71	73.48	69.71	69.36
Emergency management uniform rate	38.12	37.73	38.12	37.73	38.12	37.73	38.12	35.63
Wilding trees uniform rate	2.42	2.41	2.42	2.41	2.42	2.41	2.42	2.41
Navigational safety uniform rate	11.71	11.18	11.71	11.18	11.71	11.18	11.71	10.68
	121.96	124.80	121.96	124.80	121.96	124.80	121.96	118.08
Variable charges (capital value/land value/hectares)								
General rate (CV)	78.55	83.78	125.67	134.04	188.51	201.06	314.18	335.10
Catchment Management Rate (CV)	20.00	19.37	31.99	30.98	47.99	46.48	79.98	77.46
River & Waterway Management (CV)	3.39	3.42	5.42	5.46	8.13	8.20	13.55	13.66
Biosecurity (LV)	12.82	12.33	32.05	30.84	48.07	46.25	96.14	92.51
Transport - class B (CV)	127.40	131.62	203.84	210.59	305.75	315.89	509.59	526.48
Leith scheme - indirect (CV)	8.32	8.40	13.32	13.43	19.98	20.15	33.30	33.58
Lower Taieri Flood - Class-EF8 (CV)	15.04	16.02	24.06	25.62	36.09	38.44	60.14	64.06
East Taieri rate per ha - Class ED7	8.29	8.29	10.78	10.78	82.89	82.89	165.79	165.78
	273.79	283.21	447.12	461.75	737.41	759.35	1,272.67	1,308.63
Total rates	395.75	408.01	569.08	586.55	859.37	884.15	1,394.63	1,426.71

Attachment to the Rates Resolution Report 2026/27								
Dunedin City		Amount of rate per capital value						
Dunedin Commercial	\$750,000		\$1,000,000		\$1,500,000		\$2,500,000	
<i>Assumed Land Value - Biosecurity rate</i>	<i>\$500,000</i>		<i>\$750,000</i>		<i>\$1,000,000</i>		<i>\$2,000,000</i>	
	2026/2027	2025/2026	2026/2027	2025/2026	2026/2027	2025/2026	2026/2027	2025/2026
Uniform regional charges								
Uniform annual general charge	69.71	73.48	69.71	73.48	69.71	73.48	69.71	69.36
Emergency management uniform rate	38.12	37.73	38.12	37.73	38.12	37.73	38.12	35.63
Wilding trees uniform rate	2.42	2.41	2.42	2.41	2.42	2.41	2.42	2.41
Navigational safety uniform rate	11.71	11.18	11.71	11.18	11.71	11.18	11.71	10.68
	121.96	124.80	121.96	124.80	121.96	124.80	121.96	118.08
Variable charges (capital value/land value/hectares)								
General rate (CV)	117.82	125.66	157.09	167.55	235.64	251.33	392.73	418.88
Catchment Management Rate (CV)	29.99	29.05	39.99	38.73	59.99	58.10	99.98	96.83
River & Waterway Management (CV)	5.08	5.12	6.77	6.83	10.16	10.25	16.94	17.08
Biosecurity (LV)	32.05	30.84	48.07	46.25	64.09	61.67	128.19	123.34
Transport - class A (CV)	716.61	740.38	955.48	987.17	1,433.22	1,480.76	2,388.70	2,467.93
Leith scheme - indirect (CV)	12.49	12.59	16.65	16.79	24.97	25.19	41.62	41.98
	914.04	943.64	1,224.06	1,263.32	1,828.07	1,887.28	3,068.15	3,166.02
Total Rates	1,036.00	1,068.44	1,346.02	1,388.12	1,950.03	2,012.08	3,190.11	3,284.10

Attachment to the Rates Resolution Report 2026/27								
Dunedin City	Amount of rate per capital value							
West Taieri Farm	\$1,000,000		\$1,500,000		\$2,500,000		\$4,000,000	
Assumed Land Value - Biosecurity rate	\$765,000		\$1,275,000		\$1,615,000		\$1,870,000	
Assumed hectares	15		20		30		50	
	2026/2027	2025/2026	2026/2027	2025/2026	2026/2027	2025/2026	2026/2027	2025/2026
Uniform regional charges								
Uniform annual general charge	69.71	73.48	69.71	73.48	69.71	73.48	69.71	69.36
Emergency management uniform rate	38.12	37.73	38.12	37.73	38.12	37.73	38.12	35.63
Wilding trees uniform rate	2.42	2.41	2.42	2.41	2.42	2.41	2.42	2.41
Navigational safety uniform rate	11.71	11.18	11.71	11.18	11.71	11.18	11.71	10.68
	121.96	124.80	121.96	124.80	121.96	124.80	121.96	118.08
Variable charges (capital value/land value/hectares)								
General rate (CV)	157.09	167.55	235.64	251.33	392.73	418.88	628.36	670.20
Catchment Management Rate (CV)	39.99	38.73	59.99	58.10	99.98	96.83	159.96	154.92
River & Waterway Management (CV)	6.77	6.83	10.16	10.25	16.94	17.08	27.10	27.32
Biosecurity (LV)	49.03	47.18	81.72	78.63	103.51	99.60	119.86	115.32
Leith scheme - indirect (CV)	16.65	16.79	24.97	25.19	41.62	41.98	66.59	67.16
Lower Taieri Flood - Class WF1 (CV)	1,418.98	1,425.72	2,128.47	2,138.58	3,547.45	3,564.30	5,675.92	5,702.88
West Taieri rate per ha - Class WD1	1,944.91	1,946.14	2,593.22	2,594.85	3,889.83	3,892.27	6,483.05	6,487.12
	3,633.43	3,648.93	5,134.16	5,156.91	8,092.05	8,130.92	13,160.84	13,224.92
Total Rates	3,755.39	3,773.73	5,256.12	5,281.71	8,214.01	8,255.72	13,282.80	13,343.00

Attachment to the Rates Resolution Report 2026/27								
Queenstown Lakes District		Amount of rate per capital value						
Wakatipu Residential	\$500,000		\$1,000,000		\$1,500,000		\$2,000,000	
<i>Assumed Land Value - Biosecurity rate</i>	<i>\$250,000</i>		<i>\$500,000</i>		<i>\$750,000</i>		<i>\$1,000,000</i>	
	2026/2027	2025/2026	2026/2027	2025/2026	2026/2027	2025/2026	2026/2027	2025/2026
Uniform regional charges								
Uniform annual general charge	69.71	73.48	69.71	73.48	69.71	73.48	69.71	73.48
Emergency management uniform rate	38.12	37.73	38.12	37.73	38.12	37.73	38.12	37.73
Wilding trees uniform rate	2.42	2.41	2.42	2.41	2.42	2.41	2.42	2.41
	110.25	113.62	110.25	113.62	110.25	113.62	110.25	113.62
Variable charges (capital value/land value/hectares)								
General rate (CV)	80.22	86.48	160.43	172.96	240.65	259.44	320.86	345.92
Catchment Management Rate (CV)	20.42	19.99	40.84	39.98	61.26	59.97	81.68	79.96
River & Waterway Management (CV)	4.38	4.47	8.76	8.93	13.14	13.40	17.52	17.86
Biosecurity (LV)	16.29	15.88	32.59	31.76	48.88	47.64	65.17	63.52
Transport - class B (CV)	50.42	41.86	100.84	83.72	151.27	125.58	201.69	167.44
	171.73	168.68	343.47	337.35	515.20	506.03	686.93	674.70
Total Rates	281.98	282.30	453.72	450.97	625.45	619.65	797.18	788.32

Attachment to the Rates Resolution Report 2026/27								
Queenstown Lakes District		Amount of rate per capital value						
Wanaka Residential	\$500,000		\$1,000,000		\$1,500,000		\$2,000,000	
<i>Assumed Land Value - Biosecurity rate</i>	<i>\$250,000</i>		<i>\$500,000</i>		<i>\$750,000</i>		<i>\$1,000,000</i>	
	2026/2027	2025/2026	2026/2027	2025/2026	2026/2027	2025/2026	2026/2027	2025/2026
Uniform regional charges								
Uniform annual general charge	69.71	73.48	69.71	73.48	69.71	73.48	69.71	73.48
Emergency management uniform rate	38.12	37.73	38.12	37.73	38.12	37.73	38.12	37.73
Wilding trees uniform rate	2.42	2.41	2.42	2.41	2.42	2.41	2.42	2.41
	110.25	113.62	110.25	113.62	110.25	113.62	110.25	113.62
Variable charges (capital value/land value/hectares)								
General rate (CV)	80.22	86.48	160.43	172.96	240.65	259.44	320.86	345.92
Catchment Management Rate (CV)	20.42	19.99	40.84	39.98	61.26	59.97	81.68	79.96
River & Waterway Management (CV)	4.38	4.47	8.76	8.93	13.14	13.40	17.52	17.86
Biosecurity (LV)	16.29	15.88	32.59	31.76	48.88	47.64	65.17	63.52
	121.31	126.82	242.62	253.63	363.93	380.45	485.24	507.26
Total Rates	231.56	240.44	352.87	367.25	474.18	494.07	595.49	620.88

Attachment to the Rates Resolution Report 2026/27								
Queenstown Lakes District		Amount of rate per capital value						
Wakatipu Commercial	\$500,000		\$1,000,000		\$1,500,000		\$2,000,000	
<i>Assumed Land Value - Biosecurity rate</i>	<i>\$250,000</i>		<i>\$500,000</i>		<i>\$750,000</i>		<i>\$1,000,000</i>	
	2026/2027	2025/2026	2026/2027	2025/2026	2026/2027	2025/2026	2026/2027	2025/2026
Uniform regional charges								
Uniform annual general charge	69.71	73.48	69.71	73.48	69.71	73.48	69.71	73.48
Emergency management uniform rate	38.12	37.73	38.12	37.73	38.12	37.73	38.12	37.73
Wilding trees uniform rate	2.42	2.41	2.42	2.41	2.42	2.41	2.42	2.41
	110.25	113.62	110.25	113.62	110.25	113.62	110.25	113.62
Variable charges (capital value/land value/hectares)								
General rate (CV)	80.22	86.48	160.43	172.96	240.65	259.44	320.86	345.92
Catchment Management Rate (CV)	20.42	19.99	40.84	39.98	61.26	59.97	81.68	79.96
River & Waterway Management (CV)	4.38	4.47	8.76	8.93	13.14	13.40	17.52	17.86
Biosecurity (LV)	32.59	15.88	65.17	31.76	97.76	47.64	130.35	63.52
Transport - class A (CV)	100.84	83.72	201.69	167.44	302.53	251.16	403.38	334.88
	238.45	210.54	476.90	421.07	715.35	631.61	953.79	842.14
Total Rates	348.70	324.16	587.15	534.69	825.60	745.23	1,064.04	955.76

Attachment to the Rates Resolution Report 2026/27								
Central Otago District		Amount of rate per capital value						
Alexandra Residential	\$500,000		\$1,000,000		\$1,500,000		\$2,000,000	
<i>Assumed Land Value - Biosecurity rate 2023/2024</i>	<i>\$250,000</i>		<i>\$500,000</i>		<i>\$750,000</i>		<i>\$1,000,000</i>	
	2026/2027	2025/2026	2026/2027	2025/2026	2026/2027	2025/2026	2026/2027	2025/2026
Uniform regional charges								
Uniform annual general charge	69.71	73.48	69.71	73.48	69.71	73.48	69.71	69.36
Emergency management uniform rate	38.12	37.73	38.12	37.73	38.12	37.73	38.12	35.63
Wilding trees uniform rate	2.42	2.41	2.42	2.41	2.42	2.41	2.42	2.41
Navigational safety uniform rate	11.71	11.18	11.71	11.18	11.71	11.18	11.71	10.68
	121.96	124.80	121.96	124.80	121.96	124.80	121.96	118.08
Variable charges (capital value/land value/hectares)								
General rate (CV)	78.49	89.16	156.97	178.32	235.46	267.48	313.94	356.64
Catchment Management Rate (CV)	19.98	20.61	39.96	41.22	59.94	61.83	79.92	82.44
River & Waterway Management (CV)	13.06	15.80	26.12	31.60	39.18	47.40	52.25	63.20
Biosecurity (LV)	16.05	16.29	32.09	32.58	48.14	48.86	64.18	65.15
	127.57	141.86	255.14	283.72	382.72	425.57	510.29	567.43
Total Rates	249.53	266.66	377.10	408.52	504.68	550.37	632.25	685.51

Attachment to the Rates Resolution Report 2026/27								
Central Otago District	Amount of rate per capital value							
Central Otago Farm	\$700,000		\$1,400,000		\$2,100,000		\$2,800,000	
<i>Assumed Land Value - Biosecurity rate 2023/2024</i>	\$562,500		\$1,125,000		\$1,687,500		\$2,250,000	
	2026/2027	2025/2026	2026/2027	2025/2026	2026/2027	2025/2026	2026/2027	2025/2026
Uniform regional charges								
Uniform annual general charge	69.71	73.48	69.71	73.48	69.71	73.48	69.71	69.36
Emergency management uniform rate	38.12	37.73	38.12	37.73	38.12	37.73	38.12	35.63
Wilding trees uniform rate	2.42	2.41	2.42	2.41	2.42	2.41	2.42	2.41
Navigational safety uniform rate	11.71	11.18	11.71	11.18	11.71	11.18	11.71	10.68
	121.96	124.80	121.96	124.80	121.96	124.80	121.96	118.08
Variable charges (capital value/land value/hectares)								
General rate (CV)	109.88	124.82	219.76	249.65	329.64	374.47	439.52	499.30
Catchment Management Rate (CV)	27.97	28.85	55.94	57.71	83.91	86.56	111.88	115.42
River & Waterway Management (CV)	18.29	22.12	36.57	44.24	54.86	66.36	73.14	88.48
Biosecurity (LV)	36.10	36.65	72.21	73.29	108.31	109.94	144.42	146.59
	192.24	212.44	384.48	424.89	576.72	637.33	768.96	849.78
Total Rates	314.20		506.44		698.68		890.92	

Attachment to the Rates Resolution Report 2026/27								
Clutha District		Amount of rate per capital value						
Balclutha Residential	\$400,000		\$500,000		\$650,000		\$850,000	
<i>Assumed Land Value - Biosecurity rate</i>	<i>\$300,000</i>		<i>\$400,000</i>		<i>\$500,000</i>		<i>\$600,000</i>	
	2026/2027	2025/2026	2026/2027	2025/2026	2026/2027	2025/2026	2026/2027	2025/2026
Uniform regional charges								
Uniform annual general charge	69.71	73.48	69.71	73.48	69.71	73.48	69.71	69.36
Emergency management uniform rate	38.12	37.73	38.12	37.73	38.12	37.73	38.12	35.63
Wilding trees uniform rate	2.42	2.41	2.42	2.41	2.42	2.41	2.42	2.41
Navigational safety uniform rate	11.71	11.18	11.71	11.18	11.71	11.18	11.71	10.68
	121.96	124.80	121.96	124.80	121.96	124.80	121.96	118.08
Variable charges (capital value/land value/hectares)								
General rate (CV)	66.48	70.48	83.11	88.10	108.04	114.52	141.28	149.76
Catchment Management Rate (CV)	16.92	16.29	21.16	20.37	27.50	26.47	35.97	34.62
River & Waterway Management (CV)	21.22	21.27	26.52	26.59	34.48	34.57	45.08	45.20
Biosecurity (LV)	20.07	19.31	26.77	25.75	33.46	32.19	40.15	38.62
Lower Clutha Flood Protection - Class U2 (CV)	407.19	408.21	508.99	510.26	661.69	663.34	865.28	867.44
	531.89	535.56	666.54	671.06	865.16	871.09	1,127.76	1,135.65
Total Rates	653.85	660.36	788.50	795.86	987.12	995.89	1,249.72	1,253.73

Attachment to the Rates Resolution Report 2026/27								
Clutha District	Amount of rate per capital value							
Milton Residential	\$400,000		\$500,000		\$650,000		\$850,000	
<i>Assumed Land Value - Biosecurity rate</i>	\$300,000		\$400,000		\$500,000		\$600,000	
	2026/2027	2025/2026	2026/2027	2025/2026	2026/2027	2025/2026	2026/2027	2025/2026
Uniform regional charges								
Uniform annual general charge	69.71	73.48	69.71	73.48	69.71	73.48	69.71	69.36
Emergency management uniform rate	38.12	37.73	38.12	37.73	38.12	37.73	38.12	35.63
Wilding trees uniform rate	2.42	2.41	2.42	2.41	2.42	2.41	2.42	2.41
Navigational safety uniform rate	11.71	11.18	11.71	11.18	11.71	11.18	11.71	10.68
	121.96	124.80	121.96	124.80	121.96	124.80	121.96	118.08
Variable charges (capital value/land value/hectares)								
General rate (CV)	66.48	70.48	83.11	88.10	108.04	114.52	141.28	149.76
Catchment Management Rate (CV)	16.92	16.29	21.16	20.37	27.50	26.47	35.97	34.62
River & Waterway Management (CV)	19.47	21.27	24.34	26.59	31.64	34.57	41.38	45.20
Biosecurity (LV)	17.78	19.31	23.71	25.75	29.64	32.19	35.57	38.62
Tokomairiro Drainage - Class U1 (CV)	38.89	38.93	48.61	48.66	63.19	63.26	82.64	82.72
	159.55	166.28	200.93	209.46	260.02	271.01	336.83	350.93
Total Rates	281.51	291.08	322.89	334.26	381.98	395.81	458.79	469.01

Attachment to the Rates Resolution Report 2026/27								
Clutha District	Amount of rate per capital value							
Clutha Farm	\$500,000		\$1,000,000		\$1,500,000		\$2,000,000	
<i>Assumed Land Value - Biosecurity rate</i>	<i>\$375,000</i>		<i>\$750,000</i>		<i>\$1,125,000</i>		<i>\$1,500,000</i>	
	2026/2027	2025/2026	2026/2027	2025/2026	2026/2027	2025/2026	2026/2027	2025/2026
Uniform regional charges								
Uniform annual general charge	69.71	73.48	69.71	73.48	69.71	73.48	69.71	69.36
Emergency management uniform rate	38.12	37.73	38.12	37.73	38.12	37.73	38.12	35.63
Wilding trees uniform rate	2.42	2.41	2.42	2.41	2.42	2.41	2.42	2.41
Navigational safety uniform rate	11.71	11.18	11.71	11.18	11.71	11.18	11.71	10.68
	121.96	124.80	121.96	124.80	121.96	124.80	121.96	118.08
Variable charges (capital value/land value/hectares)								
General rate (CV)	83.11	88.10	166.21	176.19	249.32	264.29	332.42	352.38
Catchment Management Rate (CV)	21.16	20.37	42.31	40.73	63.47	61.10	84.62	81.46
River & Waterway Management (CV)	26.52	26.59	53.04	53.18	79.56	79.77	106.08	106.36
Biosecurity (LV)	25.09	24.14	50.18	48.28	75.28	72.42	100.37	96.56
Lower Clutha Flood Protection - Class C (CV)	1,442.14	1,445.74	2,884.28	2,891.48	4,326.42	4,337.22	5,768.56	5,782.96
	1,598.01	1,604.93	3,196.03	3,209.86	4,794.04	4,814.79	6,392.06	6,419.72
Total Rates	1,719.97	1,729.73	3,317.99	3,334.66	4,916.00	4,939.59	6,514.02	6,537.80

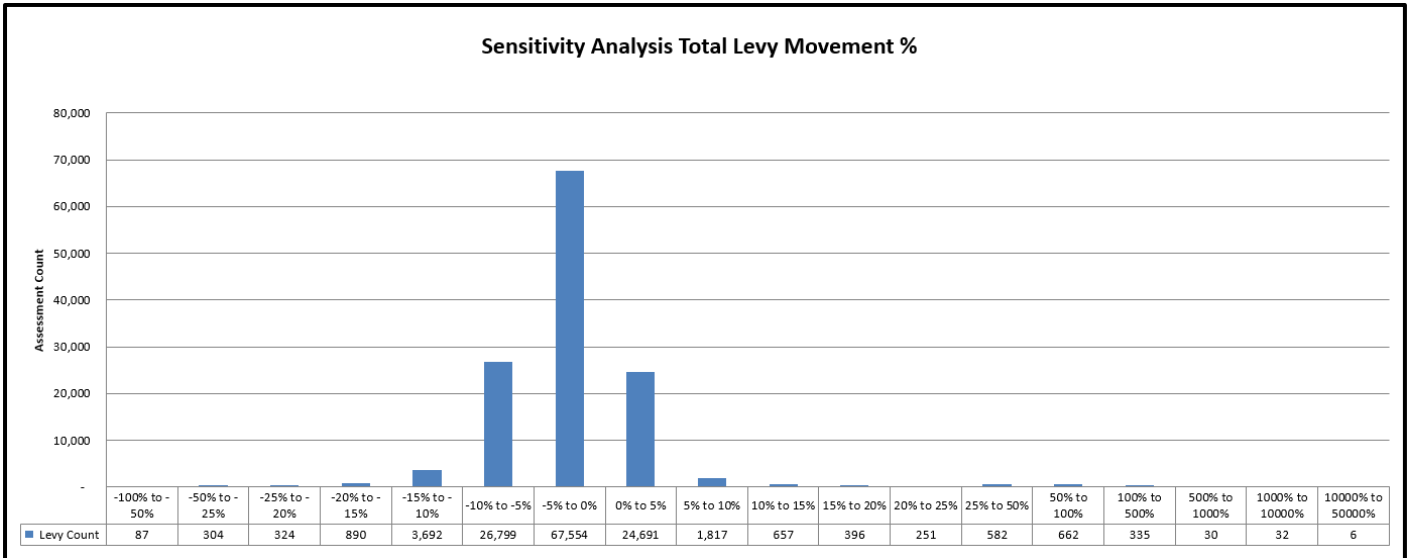
Attachment to the Rates Resolution Report 2026/27								
Waitaki District	Amount of rate per capital value							
Oamaru Residential	\$450,000		\$600,000		\$750,000		\$1,000,000	
<i>Assumed Land Value - Biosecurity rate</i>	\$150,000		\$250,000		\$500,000		\$750,000	
	2026/2027	2025/2026	2026/2027	2025/2026	2026/2027	2025/2026	2026/2027	2025/2026
Uniform regional charges								
Uniform annual general charge	69.71	73.48	69.71	73.48	69.71	73.48	69.71	69.36
Emergency management uniform rate	38.12	37.73	38.12	37.73	38.12	37.73	38.12	35.63
Wilding trees uniform rate	2.42	2.41	2.42	2.41	2.42	2.41	2.42	2.41
Navigational safety uniform rate	11.71	11.18	11.71	11.18	11.71	11.18	11.71	10.68
	121.96	124.80	121.96	124.80	121.96	124.80	121.96	118.08
Variable charges (capital value/land value/hectares)								
General rate (CV)	74.32	79.86	99.10	106.48	123.87	133.10	165.16	177.46
Catchment Management Rate (CV)	18.92	18.46	25.23	24.61	31.53	30.77	42.04	41.02
River & Waterway Management (CV)	36.84	37.95	49.12	50.60	61.39	63.25	81.86	84.33
Biosecurity (LV)	9.93	9.66	16.56	16.11	33.12	32.22	49.67	48.32
	140.01	145.93	190.00	197.79	249.91	259.32	338.74	351.13
Total rates	261.97	270.73	311.96	322.59	371.87	384.12	460.70	469.21

Attachment to the Rates Resolution Report 2026/27								
Waitaki District	Amount of rate per capital value							
Waitaki Farm	\$500,000		\$1,000,000		\$1,500,000		\$2,000,000	
<i>Assumed Land Value - Biosecurity rate</i>	<i>\$375,000</i>		<i>\$750,000</i>		<i>\$1,125,000</i>		<i>\$1,500,000</i>	
	2026/2027	2025/2026	2026/2027	2025/2026	2026/2027	2025/2026	2026/2027	2025/2026
Uniform regional charges								
Uniform annual general charge	69.71	73.48	69.71	73.48	69.71	73.48	69.71	69.36
Emergency management uniform rate	38.12	37.73	38.12	37.73	38.12	37.73	38.12	35.63
Wilding trees uniform rate	2.42	2.41	2.42	2.41	2.42	2.41	2.42	2.41
Navigational safety uniform rate	11.71	11.18	11.71	11.18	11.71	11.18	11.71	10.68
	121.96	124.80	121.96	124.80	121.96	124.80	121.96	118.08
Variable charges (capital value/land value/hectares)								
General rate (CV)	82.58	88.73	165.16	177.46	247.74	266.19	330.32	354.92
Catchment Management Rate (CV)	21.02	20.51	42.04	41.02	63.07	61.53	84.09	82.04
River & Waterway Management (CV)	40.93	42.17	81.86	84.33	122.79	126.50	163.72	168.66
Biosecurity (LV)	24.84	24.16	49.67	48.32	74.51	72.48	99.35	96.65
	169.37	175.57	338.74	351.13	508.11	526.70	677.48	702.27
Total Rates	291.33	300.37	460.70	475.93	630.07	651.50	799.44	820.35

Sensitivity Analysis – 2026-27 Proposed Annual Plan (vs 2025/26 Rates)

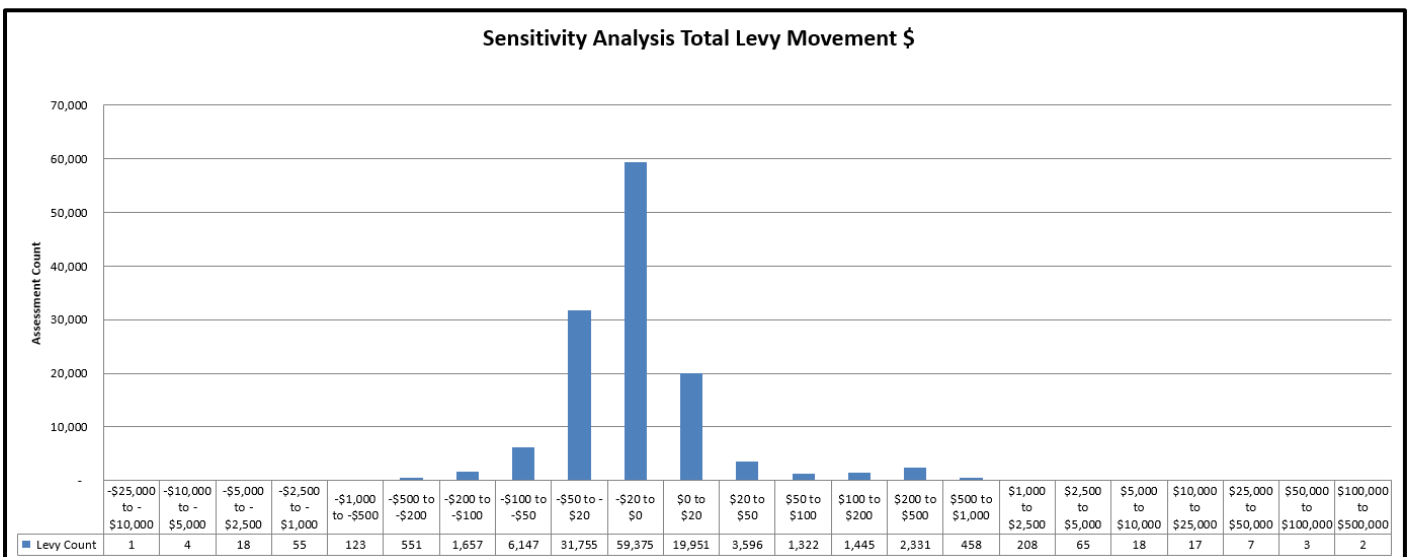
Otago Region- All districts

Sensitivity Analysis % 2026/27 Rates Resolution



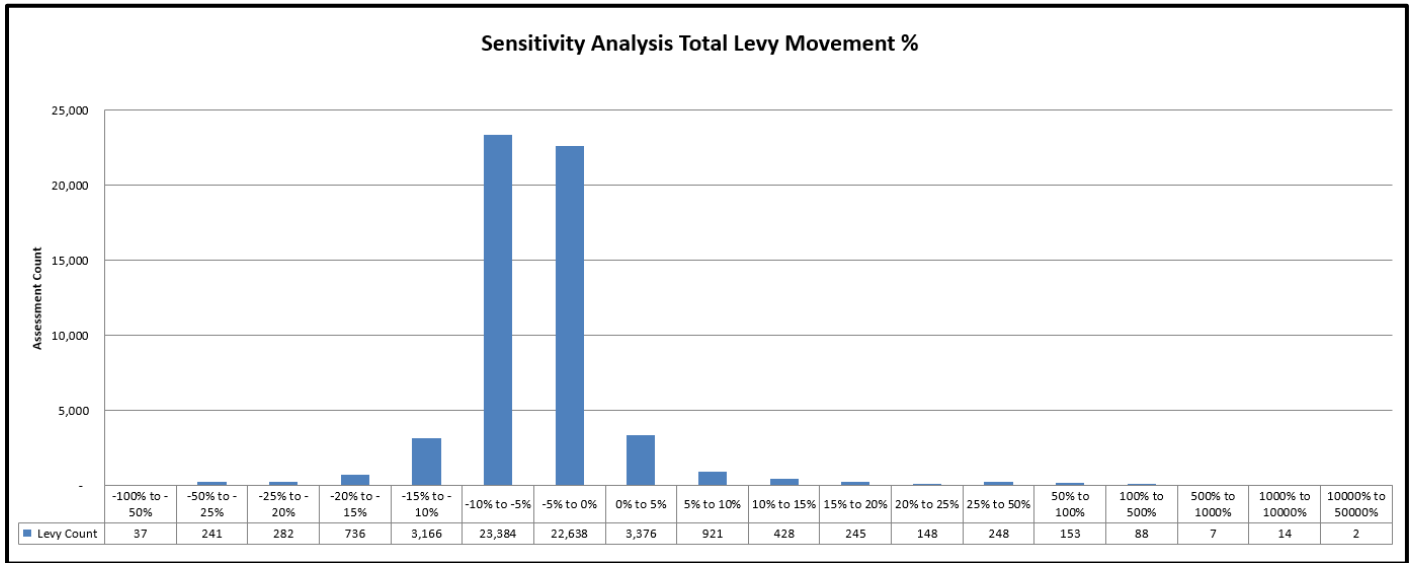
These percentage range extremes are caused by a small number of properties and have either had a large change in their capital value due to valuation or a change in the contiguous status which means that they are receiving fixed charges this year that have not previously been charged. The impact of contiguous property adjustments is larger on small capital value properties.

Sensitivity Analysis \$ 2026/27 Rates Resolution

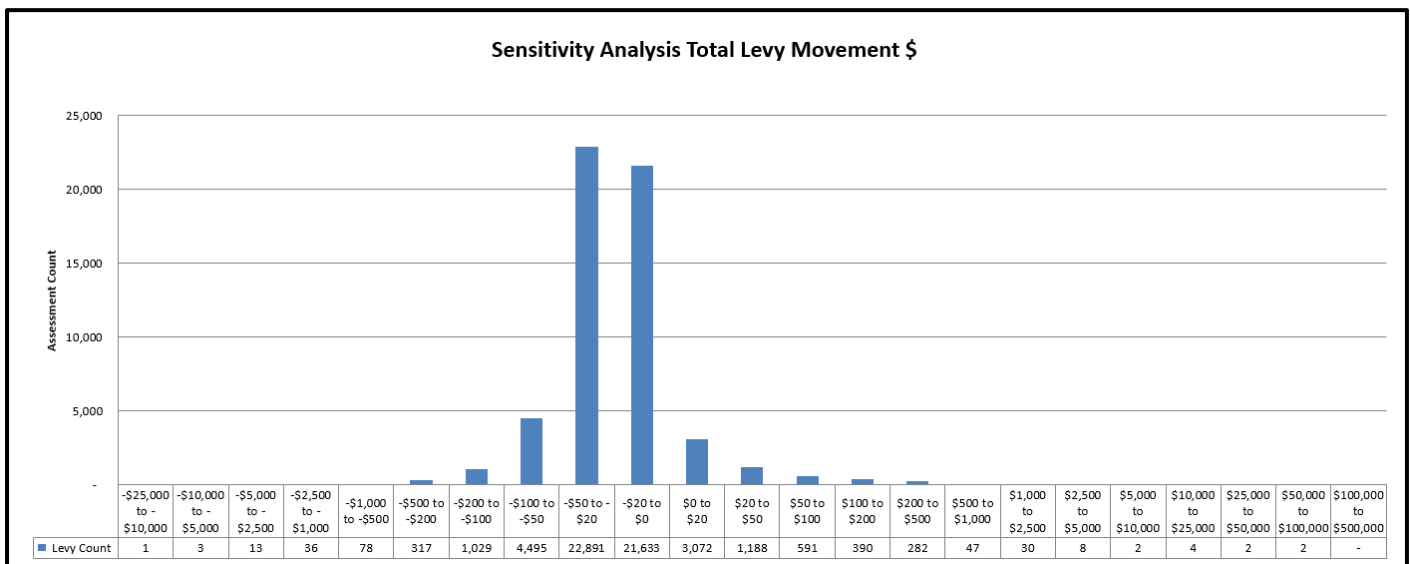


Dunedin District

Sensitivity Analysis % 2026/27 Rates Resolution

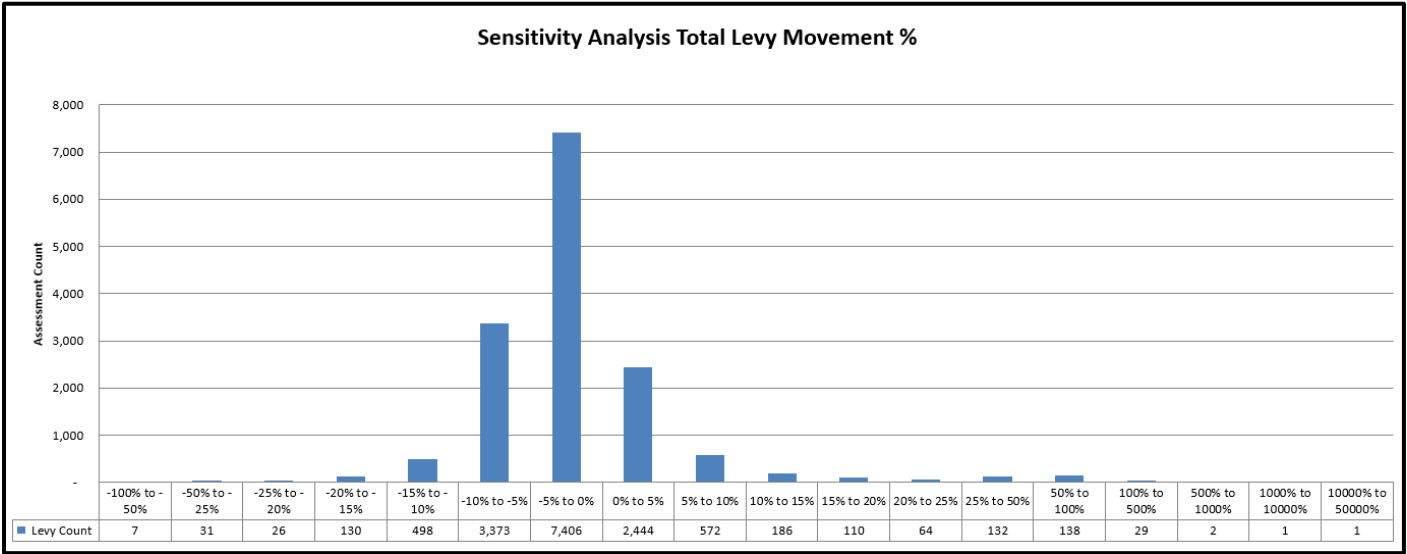


Sensitivity Analysis \$ 2026/27 Proposed Annual Plan

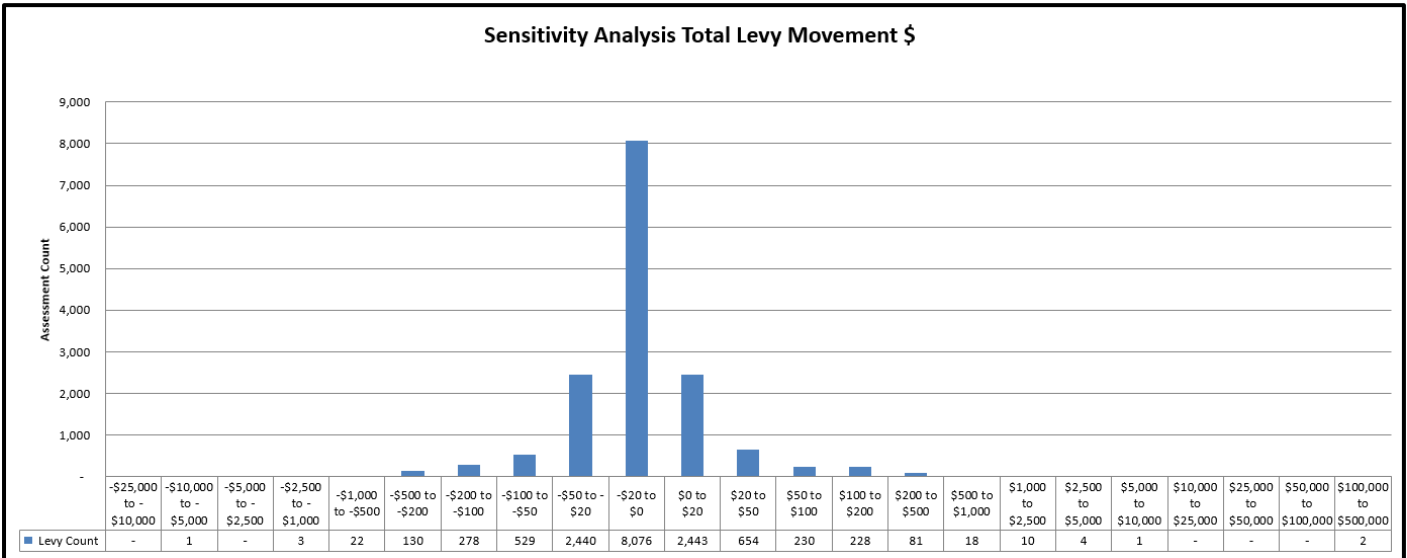


Central Otago District

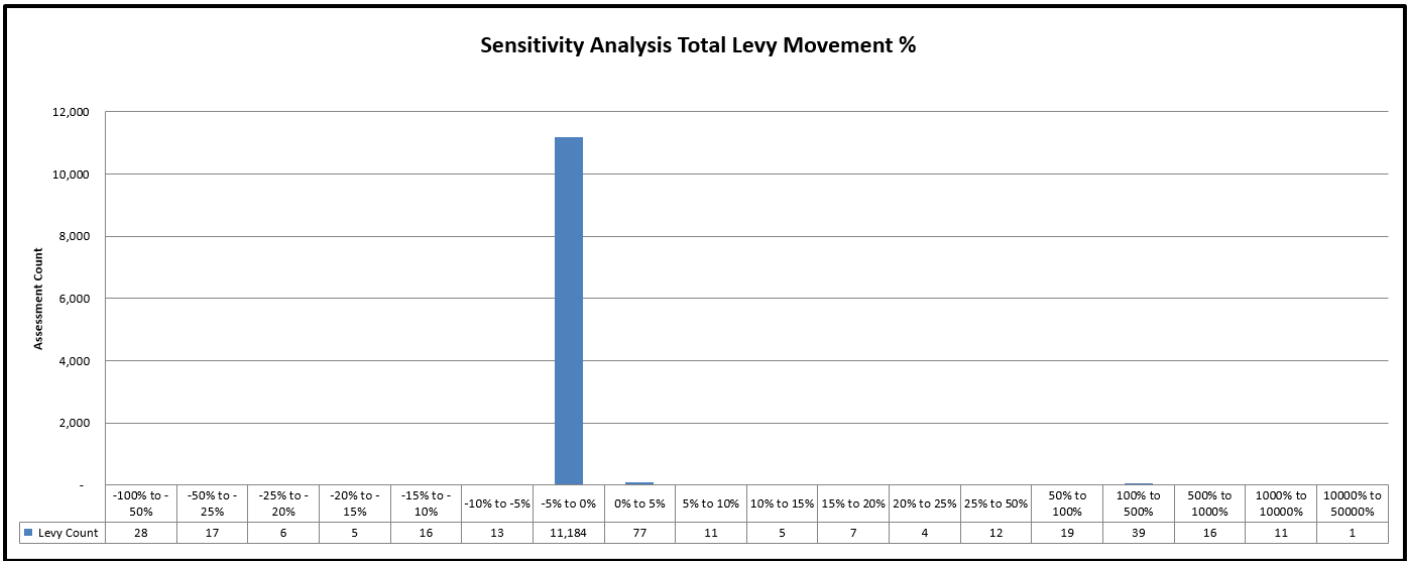
Sensitivity Analysis % 2026/27 Rates Resolution



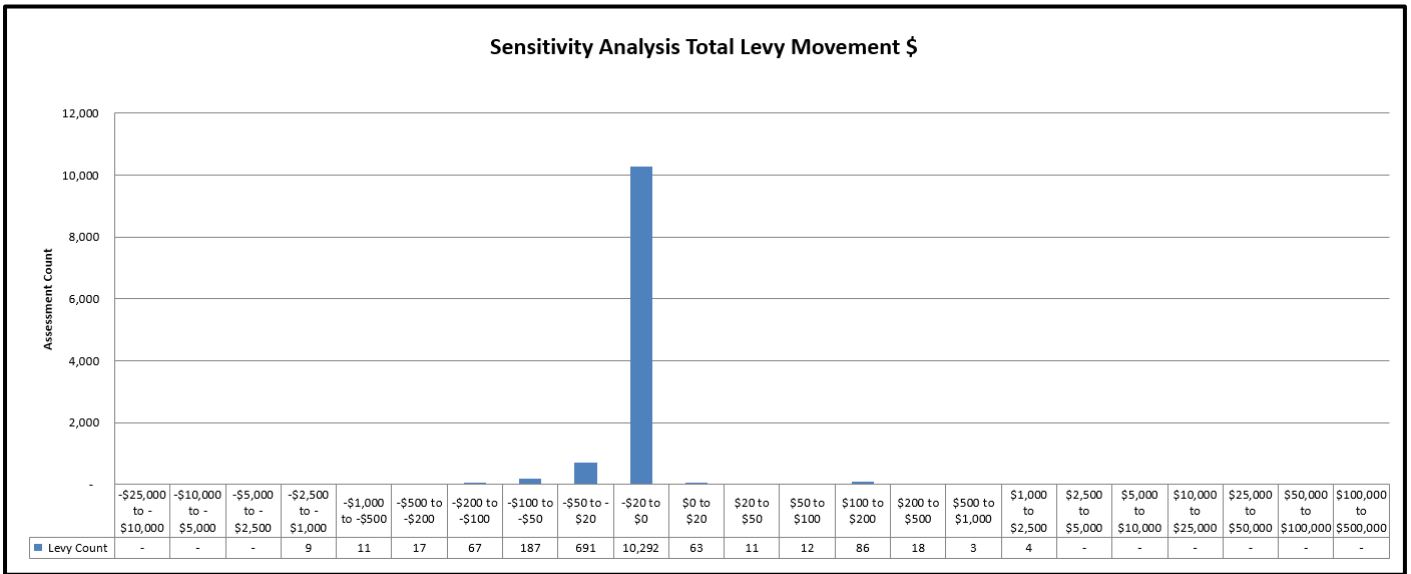
Sensitivity Analysis \$ 2026/27 Rates Resolution



Sensitivity Analysis % 2026/27 Rates Resolution

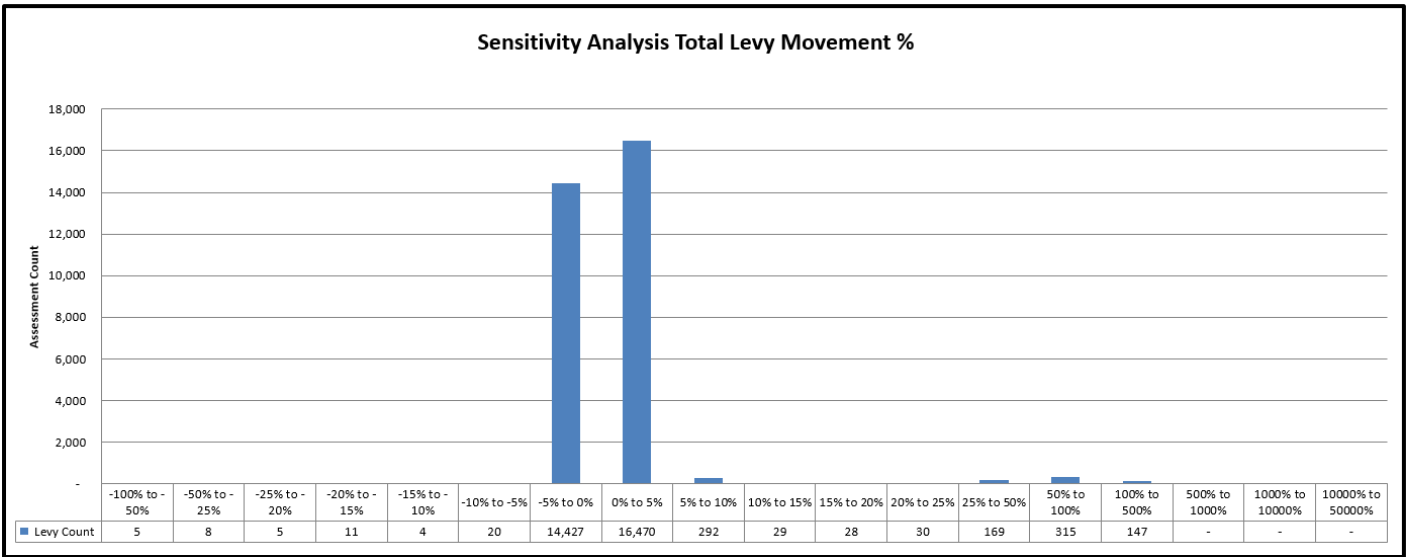


Sensitivity Analysis \$ 2026/27 Rates Resolution

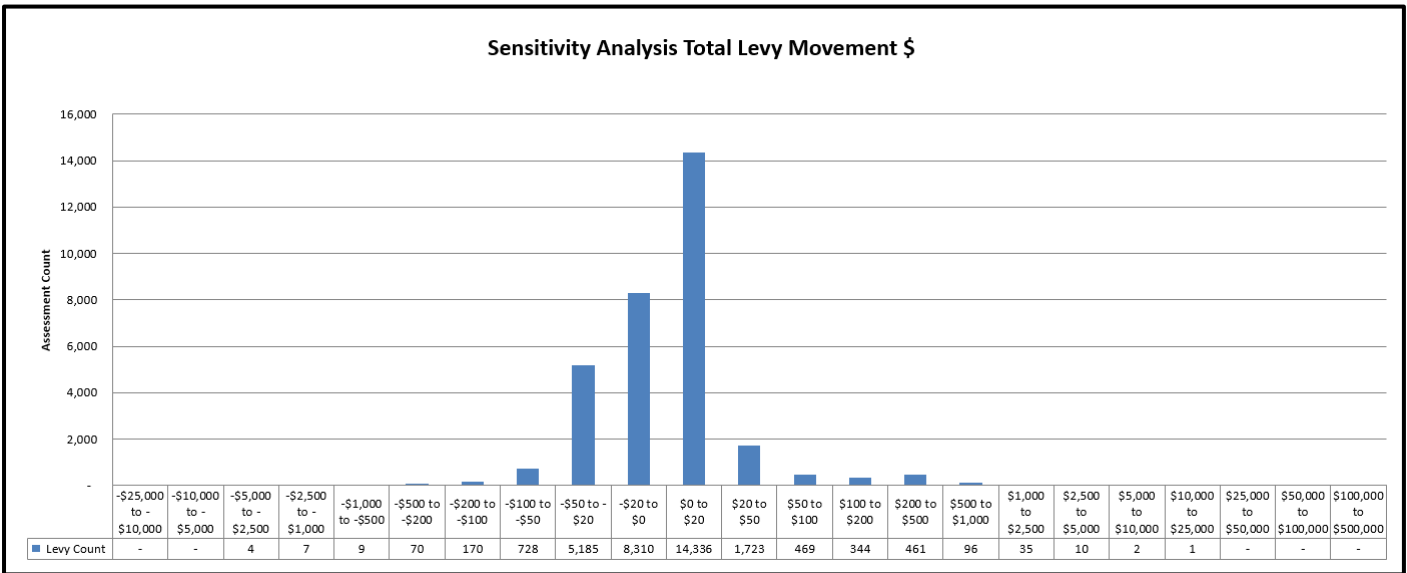


Queenstown District

Sensitivity Analysis % 2026/27 Rates Resolution

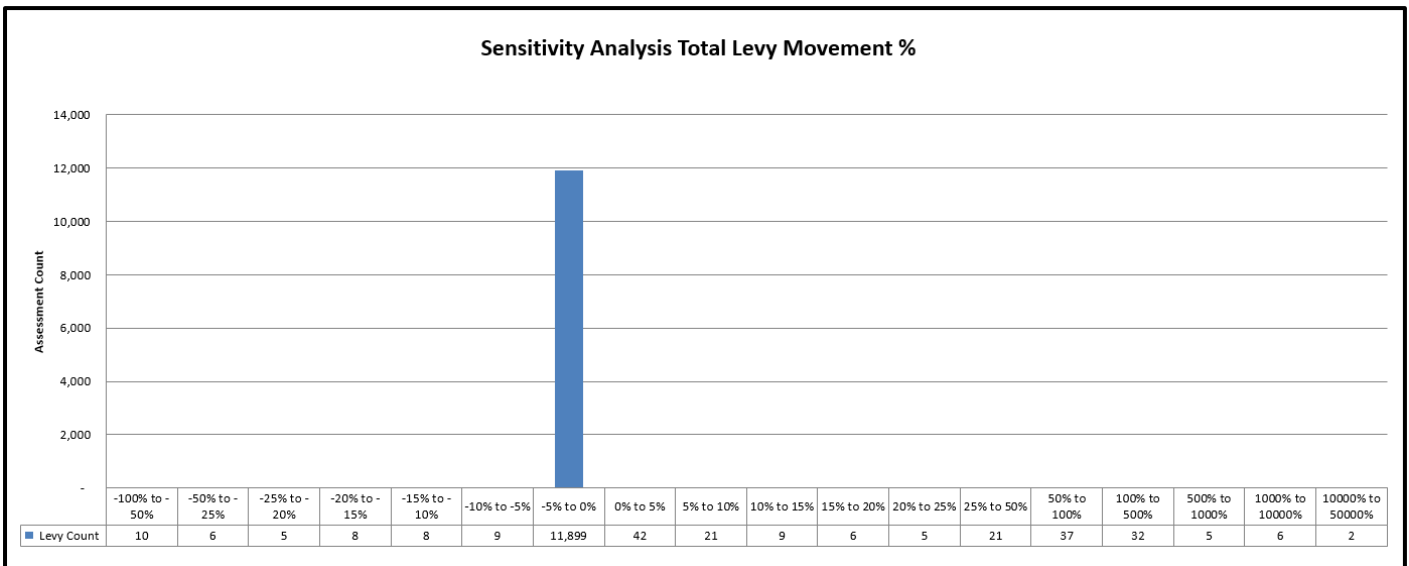


Sensitivity Analysis \$ 2026/27 Rates resolution

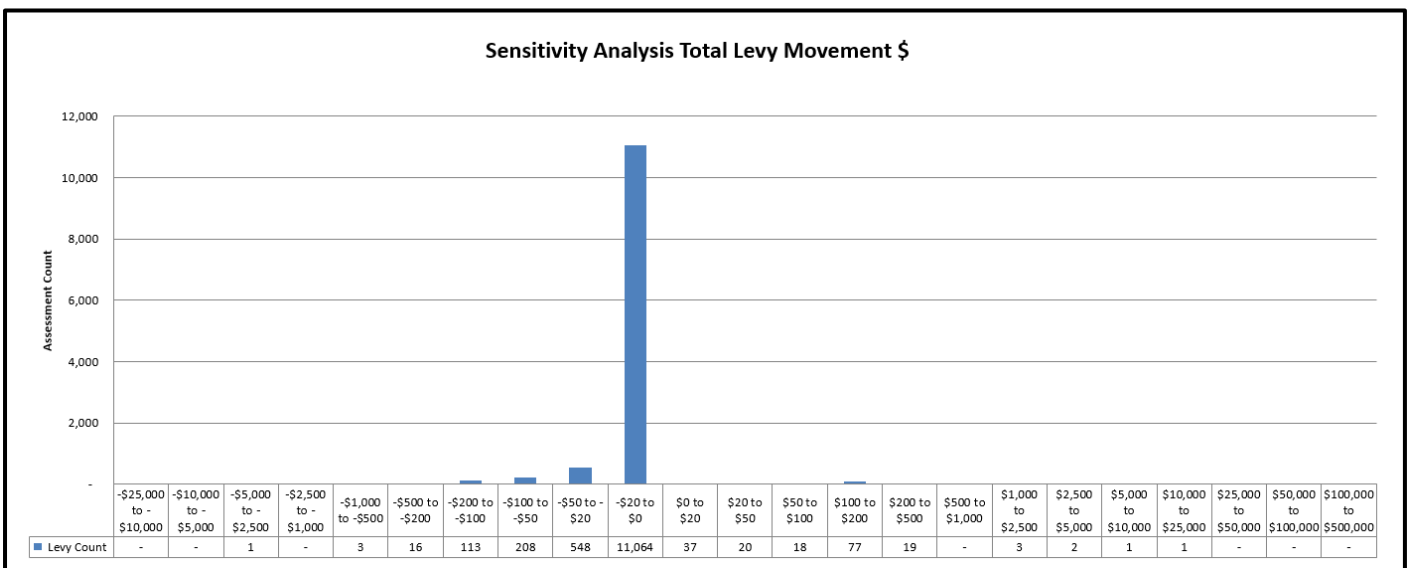


Waitaki District

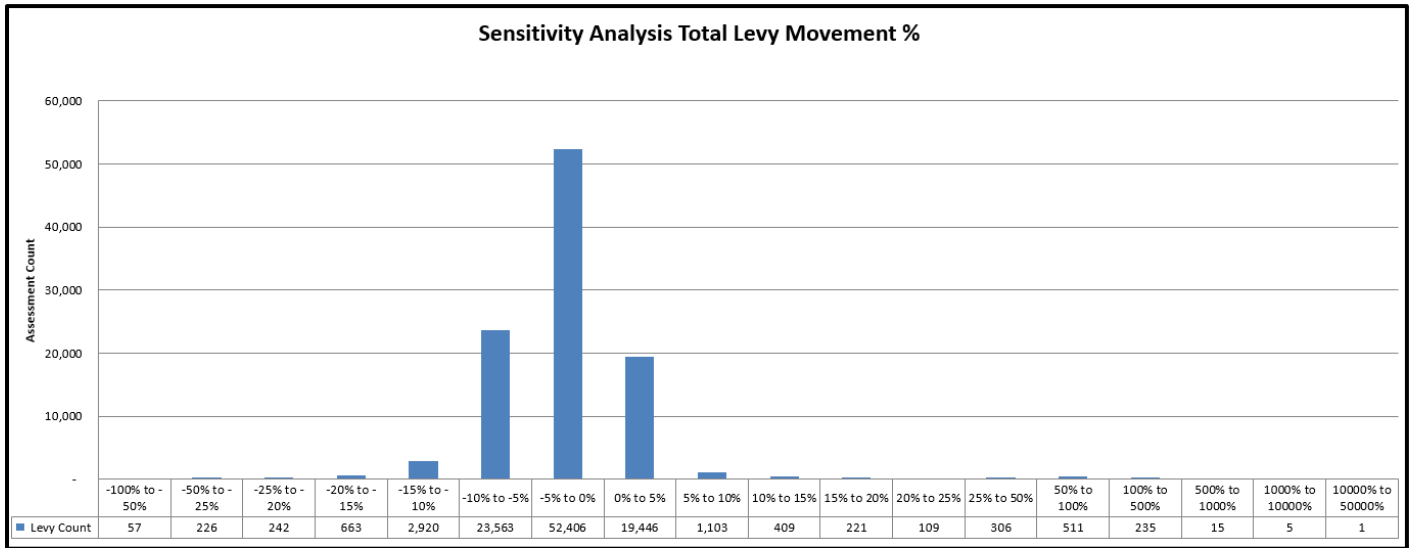
Sensitivity Analysis % 2026/27 Rates Resolution



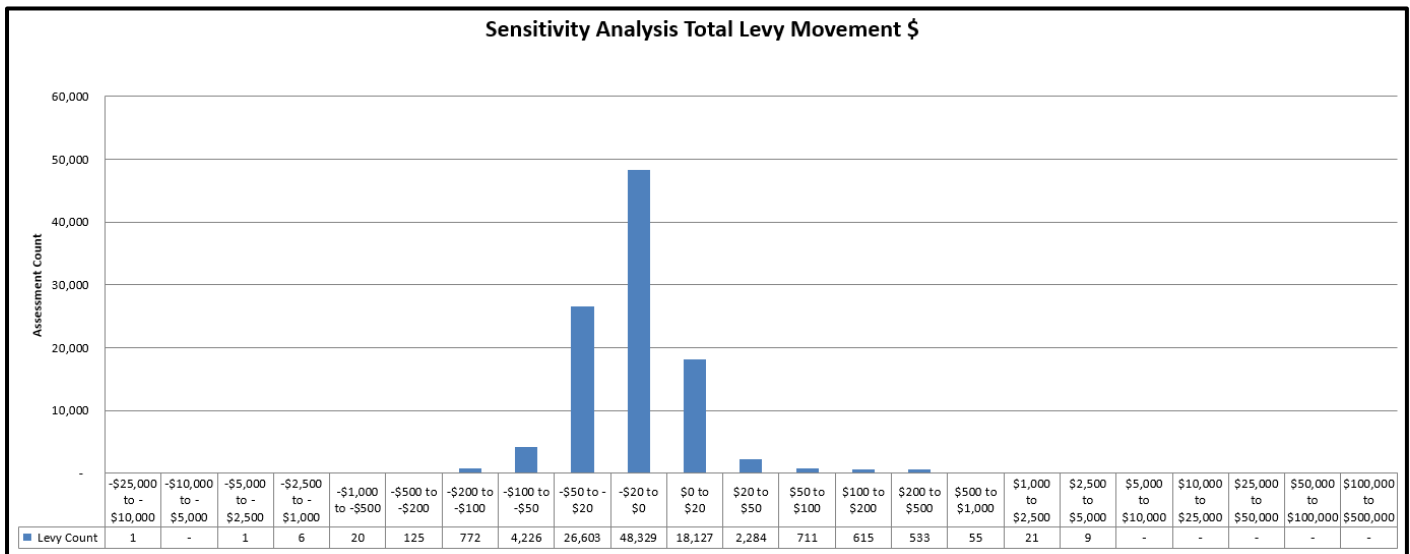
Sensitivity Analysis \$ 2026/27 Rates Resolution



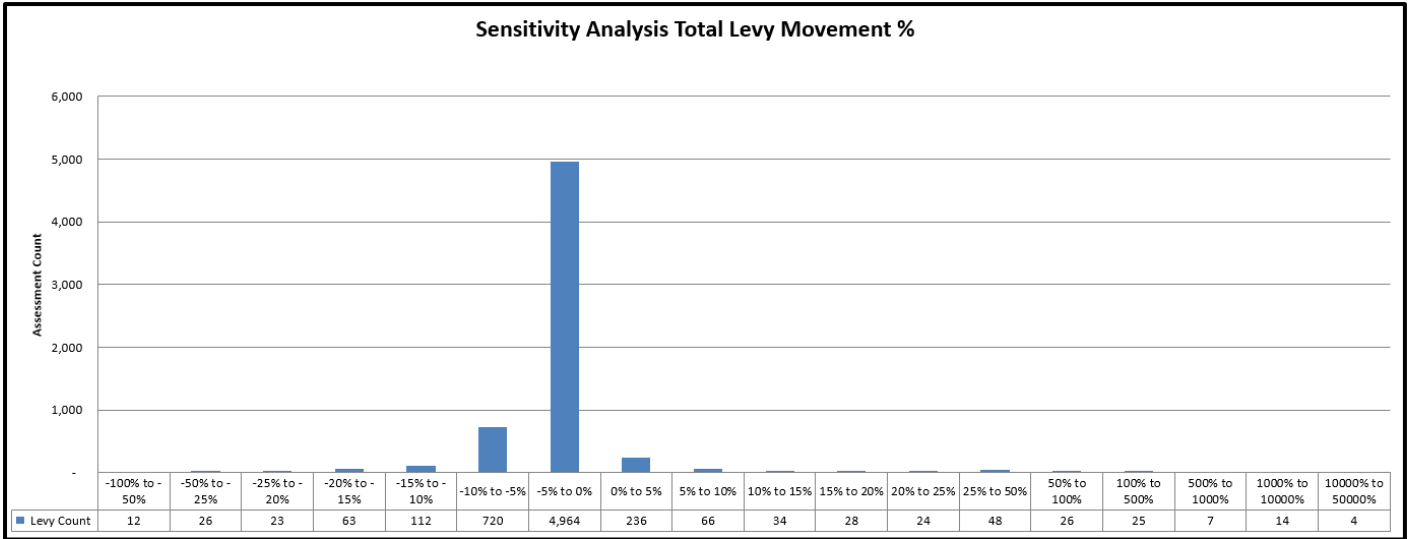
Sensitivity Analysis % 2026/27 Rates Resolution



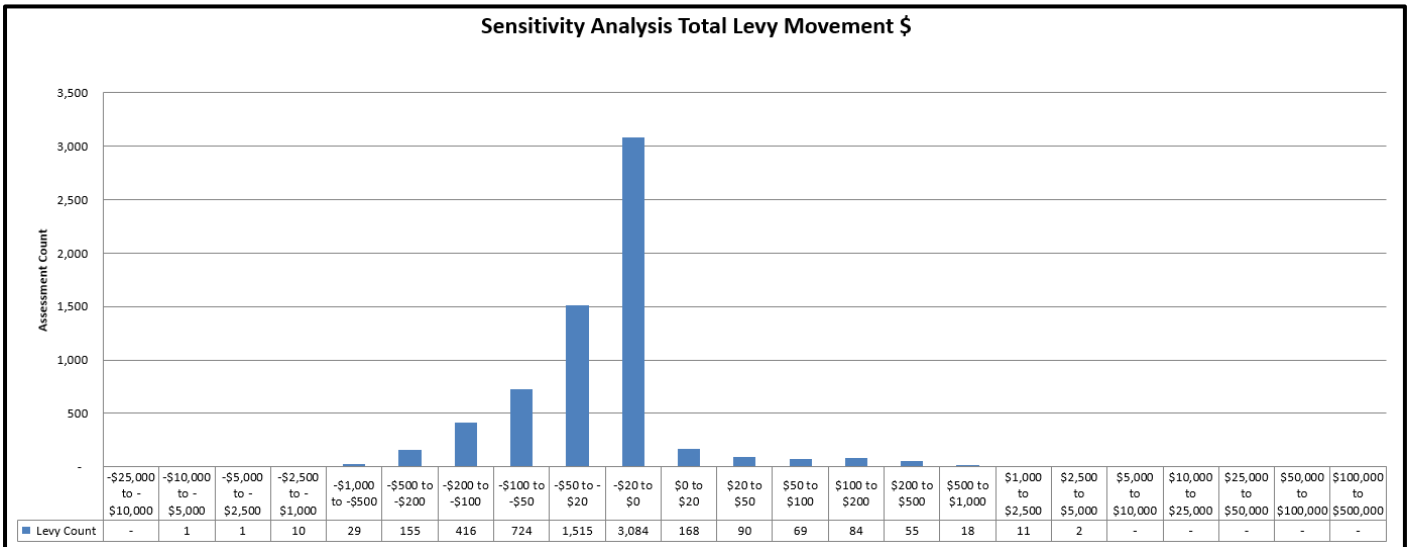
Sensitivity Analysis \$ 2026/27 Rates Resolution



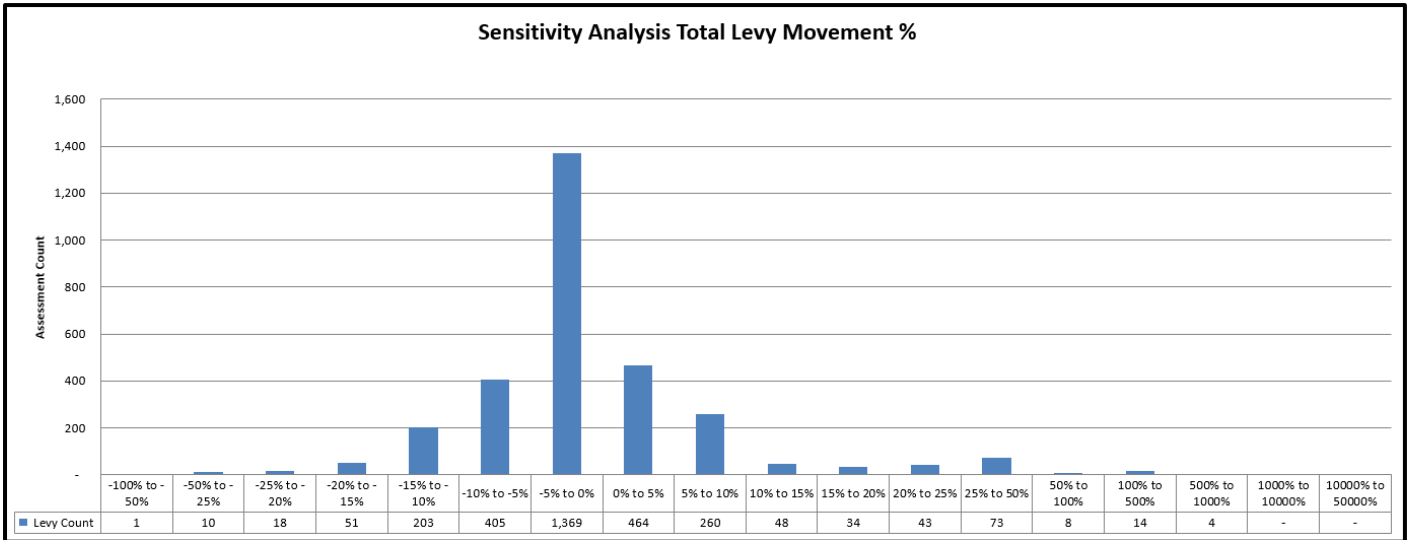
Sensitivity Analysis % 2026/27 Rates Resolution



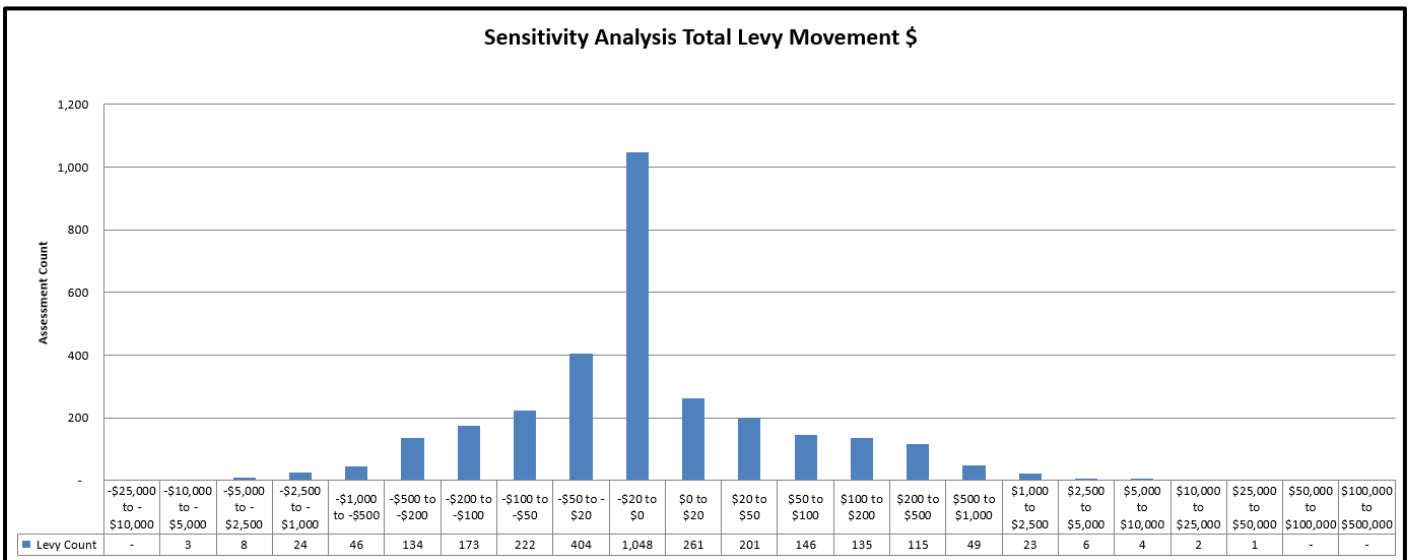
Sensitivity Analysis \$ 2026/27 Rates Resolution



Sensitivity Analysis % 2026/27 Proposed Annual Plan



Sensitivity Analysis \$ 2026/27 Rates Resolution



Rate Samples- Current Policy to Proposed Policy

Following pages show samples:

District

- residential
- rural/lifestyle
- commercial

Flood and drainage schemes

- by benefit zone

Selected Properties

Dunedin- Residential

Dunedin- Residential Median		CV \$650,000	CV \$646,000	
Rate Description	Actual 2025/26	Proposed 2026/27	Variance	
Biosecurity - Dunedin	25.90	26.91	1.01	
Targeted Wilding Trees	2.41	2.42	0.01	
Uniform General Charge	73.48	69.71 -	3.77	
Navigational Safety	11.18	11.71	0.53	
Civil Defence & Emergency Management	37.73	38.12	0.39	
Leith Flood Indirect	10.91	10.75 -	0.16	
Dunedin Transport Class B - Dunedin	171.11	165.60 -	5.51	
Catchment Management - Dunedin	25.17	25.83	0.66	
River & Waterway Management	4.44	4.38 -	0.06	
General Rate - Dunedin	108.91	101.48 -	7.43	
Total	471.24	456.90 -	14.34	

Dunedin Residential -Leith Direct		CV \$670,000	CV \$670,000	
Rate Description	Actual 2025/26	Proposed 2026/27	Variance	
Biosecurity - Dunedin	14.80	14.74 -	0.06	
Targeted Wilding Trees	2.41	2.42	0.01	
Uniform General Charge	73.48	69.71 -	3.77	
Navigational Safety	11.18	11.71	0.53	
Civil Defence & Emergency Management	37.73	38.12	0.39	
Leith Flood Direct	284.09	287.60	3.51	
Dunedin Transport Class B - Dunedin	176.37	170.71 -	5.66	
Catchment Management - Dunedin	25.95	26.79	0.84	
River & Waterway Management - Dunedin	4.58	4.54 -	0.04	
General Rate - Dunedin	112.26	105.25 -	7.01	
Total	742.85	731.59 -	11.26	

Dunedin- Residential Mosgiel		CV \$740,000	CV \$740,000	
Rate Description	Actual 2025/26	Proposed 2026/27	Variance	
Biosecurity - Dunedin	16.96	16.66 -	0.30	
Targeted Wilding Trees	2.41	2.42	0.01	
Uniform General Charge	73.48	69.71 -	3.77	
Navigational Safety	11.18	11.71	0.53	
Civil Defence & Emergency Management	37.73	38.12	0.39	
Lower Taieri Flood Protection EF8	23.70	22.25 -	1.45	
Leith Flood Indirect	12.42	12.32 -	0.10	
Dunedin Transport Class B - Dunedin	194.80	188.55 -	6.25	
Catchment Management - Dunedin	28.66	29.59	0.93	
River & Waterway Management - Dunedin	5.05	5.01 -	0.04	
East Taieri Drainage - ED7	5.85	5.85	0.00	
General Rate - Dunedin	123.99	116.25 -	7.74	
Total	536.23	518.44 -	17.79	

Dunedin- Residential Outram		CV \$850,000	CV \$870,000	
Rate Description	Actual 2025/26	Proposed 2026/27	Variance	
Biosecurity - Dunedin	21.89	19.87	-2.02	
Targeted Wilding Trees	2.41	2.42	0.01	
Uniform General Charge	73.48	69.71	-3.77	
Navigational Safety	11.18	11.71	0.53	
Civil Defence & Emergency Management	37.73	38.12	0.39	
Lower Taieri Flood Protection WF2	1,211.86	1,234.51	22.65	
Leith Flood Indirect	14.27	14.48	0.21	
Catchment Management - Dunedin	32.92	34.79	1.87	
River & Waterway Management - Dunedin	5.81	5.89	0.08	
West Taieri Drainage - WD2	17.19	17.18	-0.01	
General Rate - Dunedin	142.42	136.67	-5.75	
Total	1,571.16	1,585.35	14.19	

Dunedin Residential - Hyde		CV \$310,000	CV \$350,000	
Rate Description	Actual 2025/26	Proposed 2026/27	Variance	
Biosecurity - Dunedin	3.70	3.85	0.15	
Targeted Wilding Trees	2.41	2.42	0.01	
Uniform General Charge	73.48	69.71 -	3.77	
Navigational Safety	11.18	11.71	0.53	
Civil Defence & Emergency Management	37.73	38.12	0.39	
Leith Flood Indirect	5.20	5.83	0.63	
Catchment Management - Dunedin	12.01	14.00	1.99	
River & Waterway Management - Dunedin	2.12	2.37	0.25	
General Rate - Dunedin	51.94	54.98	3.04	
Total	199.77	202.97	3.20	

Dunedin- Residential - Middlemarch		CV \$150,000	CV \$155,000	
Rate Description	Actual 2025/26	Proposed 2026/27	Variance	
Biosecurity - Dunedin	4.93	5.13	0.20	
Targeted Wilding Trees	2.41	2.42	0.01	
Uniform General Charge	73.48	69.71 -	3.77	
Navigational Safety	11.18	11.71	0.53	
Civil Defence & Emergency Management	37.73	38.12	0.39	
Leith Flood Indirect	2.52	2.58	0.06	
Catchment Management - Dunedin	5.81	6.20	0.39	
River & Waterway Management - Dunedin	1.02	1.05	0.03	
General Rate - Dunedin	25.13	24.35 -	0.78	
Total	164.21	161.26 -	2.95	

Dunedin- Rural/Lifestyle

Dunedin Rural - Median		CV \$1,620,000	CV \$1,620,000	
Rate Description	Actual 2025/26	Proposed 2026/27	Variance	
Biosecurity - Dunedin	60.44	62.81	2.37	
Targeted Wilding Trees	2.41	2.42	0.01	
Uniform General Charge	73.48	69.71 -	3.77	
Navigational Safety	11.18	11.71	0.53	
Civil Defence & Emergency Management	37.73	38.12	0.39	
Leith Flood Indirect	27.20	26.97 -	0.23	
Catchment Management - Dunedin	62.74	64.79	2.05	
River & Waterway Management - Dunedin	11.06	10.97 -	0.09	
General Rate - Dunedin	271.43	254.49 -	16.94	
Total	557.67	541.98	-15.69	

Dunedin Rural/Lifestyle - West Taieri (WF1)		CV \$8,150,000	CV \$8,150,000	
Rate Description	Actual 2025/26	Proposed 2026/27	Variance	
Biosecurity - Dunedin	419.36	435.85	16.49	
Targeted Wilding Trees	2.41	2.42	0.01	
Uniform General Charge	73.48	69.71	-3.77	
Navigational Safety	11.18	11.71	0.53	
Civil Defence & Emergency Management	37.73	38.12	0.39	
Lower Taieri Flood Protection WF1	11,619.62	11,564.69	-54.93	
Leith Flood Indirect	136.84	135.68	-1.16	
Catchment Management - Dunedin	315.65	325.93	10.28	
River & Waterway Management - Dunedin	55.66	55.21	-0.45	
West Taieri Drainage - WD1	28,780.25	28,762.17	-18.08	
General Rate - Dunedin	1,365.53	1,280.29	-85.24	
Total	42,817.71	42,681.77	-135.94	

Dunedin Rural/Lifestyle - West Taieri (WF2)		CV \$5,140,000	CV \$5,140,000	
Rate Description	Actual 2025/26	Proposed 2026/27	Variance	
Biosecurity - Dunedin	261.48	271.76	10.28	
Targeted Wilding Trees	2.41	2.42	0.01	
Uniform General Charge	73.48	69.71	-3.77	
Navigational Safety	11.18	11.71	0.53	
Civil Defence & Emergency Management	37.73	38.12	0.39	
Lower Taieri Flood Protection WF2	7,328.20	7,293.56	-34.64	
Leith Flood Indirect	86.30	85.57	-0.73	
Catchment Management - Dunedin	199.07	205.55	6.48	
River & Waterway Management - Dunedin	35.11	34.82	-0.29	
West Taieri Drainage - WD5	7,573.09	7,568.33	-4.76	
West Taieri Drainage - WD2	6,234.33	6,230.41	-3.92	
General Rate - Dunedin	861.21	807.45	-53.76	
Total	22,442.11	22,347.65	-94.46	

Dunedin Rural/Lifestyle - Railway Reserve (Rural)		CV \$800,000	CV \$720,000	
Rate Description	Actual 2025/26	Proposed 2026/27	Variance	
Biosecurity - Dunedin	48.72	45.51	-3.21	
Targeted Wilding Trees	2.41	2.42	0.01	
Uniform General Charge	73.48	69.71	-3.77	
Navigational Safety	11.18	11.71	0.53	
Civil Defence & Emergency Management	37.73	38.12	0.39	
Leith Flood Indirect	13.43	11.99	-1.44	
Dunedin Transport Class A - Dunedin	789.74	687.95	-101.79	
Catchment Management - Dunedin	30.98	28.79	-2.19	
River & Waterway Management - Dunedin	5.46	4.88	-0.58	
General Rate - Dunedin	134.04	113.11	-20.93	
Total	1,147.17	1,014.17	-133.00	

Dunedin Rural/Lifestyle - Median Lifestyle		CV \$1,200,000	CV \$1,150,000	
Rate Description	Actual 2025/26	Proposed 2026/27	Variance	
Biosecurity - Dunedin	69.07	71.79	2.72	
Targeted Wilding Trees	2.41	2.42	0.01	
Uniform General Charge	73.48	69.71 -	3.77	
Navigational Safety	11.18	11.71	0.53	
Civil Defence & Emergency Management	37.73	38.12	0.39	
Leith Flood Indirect	19.14	18.96 -	0.18	
Catchment Management - Dunedin	44.15	45.55	1.40	
River & Waterway Management - Dunedin	7.79	7.71 -	0.08	
General Rate - Dunedin	191.01	178.93 -	12.08	
Total	455.96	444.89 -	11.07	

Dunedin Rural/Lifestyle - Port Chalmers Lifestyle		CV \$1,470,000	CV \$1,285,000	
Rate Description	Actual 2025/26	Proposed 2026/27	Variance	
Biosecurity - Dunedin	37.00	31.09 -	5.91	
Targeted Wilding Trees	2.41	2.42	0.01	
Uniform General Charge	73.48	69.71 -	3.77	
Navigational Safety	11.18	11.71	0.53	
Civil Defence & Emergency Management	37.73	38.12	0.39	
Leith Flood Indirect	24.68	21.39 -	3.29	
Dunedin Transport Class B - Dunedin	386.96	327.41 -	59.55	
Catchment Management - Dunedin	56.93	51.39 -	5.54	
River & Waterway Management - Dunedin	10.04	8.71 -	1.33	
General Rate - Dunedin	246.30	201.86 -	44.44	
Total	886.71	763.80 -	122.91	

Dunedin Rural/Lifestyle - Momona (Lifestyle)	CV \$830,000	CV \$840,000	
Rate Description	Actual 2025/26	Proposed 2026/27	Variance
Biosecurity - Dunedin	24.05	26.60	2.55
Targeted Wilding Trees	2.41	2.42	0.01
Uniform General Charge	73.48	69.71 -	3.77
Navigational Safety	11.18	11.71	0.53
Civil Defence & Emergency Management	37.73	38.11	0.38
Leith Flood Indirect	13.94	13.98	0.04
West Taieri Drainage- WD1	283.66	283.48 -	0.18
Catchment Management - Dunedin	32.15	33.59	1.44
River & Waterway Management - Dunedin	5.67	5.69	0.02
General Rate - Dunedin	139.07	131.96 -	7.11
Lower Taieri Flood Protection- WF1	1,183.35	1,191.94	8.59
	1,806.69	1,809.19	2.50

Dunedin- Commercial

Dunedin Commercial - Median		CV \$2,280,000	CV \$2,040,000	
Rate Description	Actual 2025/26	Proposed 2026/27	Variance	
Biosecurity - Dunedin	49.95	51.91	1.96	
Targeted Wilding Trees	2.41	2.42	0.01	
Uniform General Charge	73.48	69.71 -	3.77	
Navigational Safety	11.18	11.71	0.53	
Civil Defence & Emergency Management	37.73	38.12	0.39	
Leith Flood Indirect	38.28	33.96 -	4.32	
Dunedin Transport Class A	2,250.75	1,949.18 -	301.57	
Catchment Management - Dunedin	88.30	81.58 -	6.72	
River & Waterway Management - Dunedin	15.57	13.82 -	1.75	
General Rate - Dunedin	382.01	320.47 -	61.54	
Total	2,949.66	2,572.87 -	376.79	

Dunedin Commercial - Dunedin (Leith indirect)		CV \$3,180,000	CV \$3,220,000	
Rate Description	Actual 2025/26	Proposed 2026/27	Variance	
Biosecurity - Dunedin	111.01	115.37	4.36	
Targeted Wilding Trees	2.41	2.42	0.01	
Uniform General Charge	73.48	69.71 -	3.77	
Navigational Safety	11.18	11.71	0.53	
Civil Defence & Emergency Management	37.73	38.12	0.39	
Leith Flood Indirect	53.39	53.61	0.22	
Dunedin Transport Class B - Dunedin	837.10	820.44 -	16.66	
Catchment Management - Dunedin	123.16	128.77	5.61	
River & Waterway Management - Dunedin	21.72	21.81	0.09	
General Rate - Dunedin	532.81	505.83 -	26.98	
Total	1,803.99	1,767.79 -	36.20	

Dunedin Commercial - Dunedin (Leith direct)		CV \$3,290,000	CV \$3,670,000	
Rate Description	Actual 2025/26	Proposed 2026/27	Variance	
Biosecurity - Dunedin	152.32	158.31	5.99	
Targeted Wilding Trees	2.41	2.42	0.01	
Uniform General Charge	73.48	69.71 -	3.77	
Navigational Safety	11.18	11.71	0.53	
Civil Defence & Emergency Management	37.73	38.12	0.39	
Leith Flood Direct	1,394.99	1,575.37	180.38	
Dunedin Transport Class B - Dunedin	866.06	935.10	69.04	
Catchment Management - Dunedin	127.42	146.77	19.35	
River & Waterway Management - Dunedin	22.47	24.86	2.39	
General Rate - Dunedin	551.24	576.52	25.28	
Total	3,239.30	3,538.88	299.58	

Dunedin Commercial - Dunedin Motel		CV \$4,280,000	CV \$5,250,000	
Rate Description	Actual 2025/26	Proposed 2026/27	Variance	
Biosecurity - Dunedin	167.74	166.01	-	1.73
Targeted Wilding Trees	2.41	2.42		0.01
Uniform General Charge	73.48	69.71	-	3.77
Navigational Safety	11.18	11.71		0.53
Civil Defence & Emergency Management	37.73	38.12		0.39
Leith Flood Direct	1,814.76	2,253.59		438.83
Dunedin Transport Class B - Dunedin	1,126.67	1,337.67		211.00
Catchment Management - Dunedin	165.76	209.95		44.19
River & Waterway Management - Dunedin	29.23	35.57		6.34
General Rate - Dunedin	717.11	824.73		107.62
Total	4,146.07	4,949.47		803.40

Central Otago- Residential

Central Otago Residential - Median		CV \$850,000	CV \$890,000	
Rate Description	Actual 2025/26	Proposed 2026/27	Variance	
Biosecurity - Central Otago	20.20	19.89 -	0.31	
Targeted Wilding Trees	2.41	2.42	0.01	
Uniform General Charge	73.48	69.71 -	3.77	
Navigational Safety	11.18	11.71	0.53	
Civil Defence & Emergency Management	37.73	38.12	0.39	
Catchment Management - Central Otago	35.04	35.56	0.52	
River & Waterway Management - Central Otago	26.86	23.25 -	3.61	
General Rate - Central Otago	151.57	139.70 -	11.87	
Total	358.47	340.35 -	18.12	

Central Otago Residential - Cromwell		CV \$820,000	CV \$900,000	
Rate Description	Actual 2025/26	Proposed 2026/27	Variance	
Biosecurity - Central Otago	35.83	43.65	7.82	
Targeted Wilding Trees	2.41	2.42	0.01	
Uniform General Charge	73.48	69.71 -	3.77	
Navigational Safety	11.18	11.71	0.53	
Civil Defence & Emergency Management	37.73	38.12	0.39	
Catchment Management - Central Otago	33.80	35.96	2.16	
River & Waterway Management - Central Otago	25.91	23.51 -	2.40	
General Rate - Central Otago	146.22	141.27 -	4.95	
Total	366.56	366.34 -	0.22	

Central Otago Residential - Alexandra		CV \$630,000	CV \$660,000	
Rate Description	Actual 2025/26	Proposed 2026/27	Variance	
Biosecurity - Central Otago	19.55	19.26 -	0.29	
Targeted Wilding Trees	2.41	2.42	0.01	
Uniform General Charge	73.48	69.71 -	3.77	
Navigational Safety	11.18	11.71	0.53	
Civil Defence & Emergency Management	37.73	38.12	0.39	
Catchment Management - Central Otago	25.97	26.37	0.40	
River & Waterway Management - Central Otago	19.91	17.24 -	2.67	
General Rate - Central Otago	112.34	103.60 -	8.74	
Total	302.57	288.42	-14.15	

Central Otago Residential - Clyde		CV \$830,000	CV \$820,000	
Rate Description	Actual 2025/26	Proposed 2026/27	Variance	
Biosecurity - Central Otago	35.83	33.38 -	2.45	
Targeted Wilding Trees	2.41	2.42	0.01	
Uniform General Charge	73.48	69.71 -	3.77	
Navigational Safety	11.18	11.71	0.53	
Civil Defence & Emergency Management	37.73	38.12	0.39	
Catchment Management - Central Otago	34.21	32.77 -	1.44	
River & Waterway Management - Central Otago	26.23	21.42 -	4.81	
General Rate - Central Otago	148.01	128.71 -	19.30	
Total	369.08	338.23 -	30.85	

Central Otago- Rural/Lifestyle

Central Otago Rural/Lifestyle - Lifestyle Median		Cv \$1,200,000	CV \$1,271,000	
Rate Description	Actual 2025/26	Proposed 2026/27	Variance	
Biosecurity - Central Otago	34.53	34.01 -	0.52	
Targeted Wilding Trees	2.41	2.42	0.01	
Uniform General Charge	73.48	69.71 -	3.77	
Navigational Safety	11.18	11.71	0.53	
Civil Defence & Emergency Management	37.73	38.12	0.39	
Catchment Management - Central Otago	49.46	50.75	1.29	
River & Waterway Management - Central Otago	37.92	33.18 -	4.74	
General Rate - Central Otago	213.98	199.35 -	14.63	
Total	460.69	439.24	-21.45	

Central Otago Rural/Lifestyle - Median Rural		CV \$3,670,000	CV \$3,670,000	
Rate Description	Actual 2025/26	Proposed 2026/27	Variance	
Biosecurity - Central Otago	201.31	198.33 -	2.98	
Targeted Wilding Trees	2.41	2.42	0.01	
Uniform General Charge	73.48	69.71 -	3.77	
Navigational Safety	11.18	11.71	0.53	
Civil Defence & Emergency Management	37.73	38.12	0.39	
Catchment Management - Central Otago	151.28	146.95 -	4.33	
River & Waterway Management - Central Otago	115.97	95.87 -	20.10	
General Rate - Central Otago	564.43	576.06	11.63	
Total	1,157.79	1,139.16	-18.63	

Central Otago Rural/Lifestyle - Farm		CV \$10,850,000	CV \$11,700,000	
Rate Description	Actual 2025/26	Proposed 2026/27	Variance	
Biosecurity - Central Otago	533.58	566.75	33.17	
Targeted Wilding Trees	2.41	2.42	0.01	
Uniform General Charge	73.48	69.71 -	3.77	
Navigational Safety	11.18	11.71	0.53	
Civil Defence & Emergency Management	37.73	38.12	0.39	
Catchment Management - Central Otago	447.24	467.52	20.28	
River & Waterway Management - Central Otago	342.86	305.63 -	37.23	
General Rate - Central Otago	1,934.77	1,836.49 -	98.28	
Total	3,383.25	3,298.35	84.90	

Central Otago- Commercial

Central Otago Commercial - Median CV \$880,000		CV \$1,250,000	CV \$1,200,000	
Rate Description	Actual 2025/26	Proposed 2026/27	Variance	
Biosecurity - Central Otago	43.65	38.51 -	5.14	
Targeted Wilding Trees	2.41	2.42	0.01	
Uniform General Charge	73.48	69.71 -	3.77	
Navigational Safety	11.18	11.71	0.53	
Civil Defence & Emergency Management	37.73	38.12	0.39	
Catchment Management - Central Otago	51.53	47.95 -	3.58	
River & Waterway Management - Central Otago	39.50	31.35 -	8.15	
General Rate - Central Otago	222.90	188.36 -	34.54	
Total	482.38	428.12	-54.26	

Central Otago Commercial		CV \$2,780,000	CV \$2,940,000	
Rate Description	Actual 2025/26	Proposed 2026/27	Variance	
Biosecurity - Central Otago	115.97	112.97 -	3.00	
Targeted Wilding Trees	2.41	2.42	0.01	
Uniform General Charge	73.48	69.71 -	3.77	
Navigational Safety	11.18	11.71	0.53	
Civil Defence & Emergency Management	37.73	38.12	0.39	
Catchment Management - Central Otago	114.59	117.48	2.89	
River & Waterway Management - Central Otago	87.85	76.80 -	11.05	
General Rate - Central Otago	495.73	461.48 -	34.25	
Total	938.94	890.68	-48.26	

Central Otago Commercial		CV \$5,300,000	CV \$5,450,000	
Rate Description	Actual 2025/26	Proposed 2026/27	Variance	
Biosecurity - Central Otago	78.83	121.30	42.47	
Targeted Wilding Trees	2.41	2.42	0.01	
Uniform General Charge	73.48	69.71 -	3.77	
Navigational Safety	11.18	11.71	0.53	
Civil Defence & Emergency Management	37.73	38.12	0.39	
Catchment Management - Central Otago	218.47	217.78 -	0.69	
River & Waterway Management - Central Otago	167.48	142.37 -	25.11	
General Rate - Central Otago	945.10	855.46 -	89.64	
Total	1,534.68	1,458.86	75.82	

Clutha- Residential

Clutha Residential - Median	CV \$370,000	CV \$370,000	
Rate Description	Actual 2025/26	Proposed 2026/27	Variance
Biosecurity - Clutha	8.37	8.70	0.33
Targeted Wilding Trees	2.41	2.42	0.01
Uniform General Charge	73.48	69.71 -	3.77
Navigational Safety	11.18	11.71	0.53
Civil Defence & Emergency Management	37.73	38.12	0.39
Lower Clutha Flood Protection & Drainage U4	62.90	62.78 -	0.12
Catchment Management - Clutha	15.07	15.66	0.59
River & Waterway Management - Clutha	19.68	19.62 -	0.06
General Rate - Clutha	65.19	61.50 -	3.69
Total	296.01	290.20 -	5.81

Clutha Residential - Lawrence Resident	CV \$250,000	CV \$250,000	
Rate Description	Actual 2025/26	Proposed 2026/27	Variance
Biosecurity - Clutha	11.59	12.04	0.45
Targeted Wilding Trees	2.41	2.42	0.01
Uniform General Charge	73.48	69.71 -	3.77
Navigational Safety	11.18	11.71	0.53
Civil Defence & Emergency Management	37.73	38.12	0.39
Catchment Management - Clutha	10.18	10.58	0.40
River & Waterway Management - Clutha	13.30	13.26 -	0.04
General Rate - Clutha	44.05	41.55 -	2.50
Total	203.92	199.39	-4.53

Clutha Residential - Balclutha resident	CV \$310,000	CV \$310,000	
Rate Description	Actual 2025/26	Proposed 2026/27	Variance
Biosecurity - Clutha	5.79	6.02	0.23
Targeted Wilding Trees	2.41	2.42	0.01
Uniform General Charge	73.48	69.71 -	3.77
Navigational Safety	11.18	11.71	0.53
Civil Defence & Emergency Management	37.73	38.12	0.39
Lower Clutha Flood Protection & Drainage U4	52.70	52.60 -	0.10
Catchment Management - Clutha	12.63	13.12	0.49
River & Waterway Management - Clutha	16.49	16.44 -	0.05
General Rate - Clutha	54.62	51.53 -	3.09
Total	267.03	261.65 -	5.38

Clutha Residential - Milton Resident	CV \$290,000	CV \$290,000	Variance
	Actual 2025/26	Proposed 2026/27	
Biosecurity - Clutha	6.76	7.03	0.27
Targeted Wilding Trees	2.41	2.42	0.01
Uniform General Charge	73.48	69.71 -	3.77
Navigational Safety	11.18	11.71	0.53
Civil Defence & Emergency Management	37.73	38.12	0.39
Tokomairiro Drainage U1	28.22	28.19 -	0.03
Catchment Management - Clutha	11.81	12.27	0.46
River & Waterway Management - Clutha	15.42	15.38 -	0.04
General Rate - Clutha	51.10	48.20 -	2.90
Total	238.11	233.03 -	5.08

Clutha- Rural/Lifestyle

Clutha Rural/Lifestyle - Median Rural		CV \$1,930,000	CV \$1,930,000	
Rate Description	Actual 2025/26	Proposed 2026/27	Variance	
Biosecurity - Clutha	117.15	121.78	4.63	
Targeted Wilding Trees	2.41	2.42	0.01	
Uniform General Charge	73.48	69.71 -	3.77	
Navigational Safety	11.18	11.71	0.53	
Civil Defence & Emergency Management	37.73	38.12	0.39	
Catchment Management - Clutha	78.61	81.66	3.05	
River & Waterway Management - Clutha	102.64	102.37 -	0.27	
General Rate - Clutha	340.05	320.79 -	19.26	
Total	763.25	748.55 -	14.70	

Clutha Rural/Lifestyle - Tokomariro Rural		CV \$2,700,000	CV \$2,700,000	
Rate Description	Actual 2025/26	Proposed 2026/27	Variance	
Biosecurity - Clutha	148.05	153.90	5.85	
Targeted Wilding Trees	2.41	2.42	0.01	
Uniform General Charge	73.48	69.71 -	3.77	
Navigational Safety	11.18	11.71	0.53	
Civil Defence & Emergency Management	37.73	38.12	0.39	
Tokomairiro Drainage F	435.54	433.24 -	2.30	
Tokomairiro Drainage B	38.06	37.86 -	0.20	
Catchment Management - Clutha	109.97	114.24	4.27	
River & Waterway Management - Clutha	143.59	143.21 -	0.38	
General Rate - Clutha	475.71	448.77 -	26.94	
Total	1,327.67	1,299.27 -	28.40	

Clutha Rural/Lifestyle - Lifestyle Median		CV \$625,000	CV \$625,000	
Rate Description	Actual 2025/26	Proposed 2026/27	Variance	
Biosecurity - Clutha	12.87	13.38	0.51	
Targeted Wilding Trees	2.41	2.42	0.01	
Uniform General Charge	73.48	69.71 -	3.77	
Navigational Safety	11.18	11.71	0.53	
Civil Defence & Emergency Management	37.73	38.12	0.39	
Catchment Management - Clutha	25.46	26.45	0.99	
River & Waterway Management - Clutha	33.24	33.15 -	0.09	
General Rate - Clutha	110.12	103.88 -	6.24	
Total	306.49	298.81 -	7.68	

Clutha Rural/Lifestyle - Lifestyle		CV \$1,000,000	CV \$1,000,000	
Rate Description	Actual 2025/26	Proposed 2026/27	Variance	
Biosecurity - Clutha	11.59	12.04	0.45	
Targeted Wilding Trees	2.41	2.42	0.01	
Uniform General Charge	73.48	69.71 -	3.77	
Navigational Safety	11.18	11.71	0.53	
Civil Defence & Emergency Management	37.73	38.12	0.39	
Catchment Management - Clutha	40.73	42.31	1.58	
River & Waterway Management - Clutha	53.18	53.04 -	0.14	
General Rate - Clutha	176.19	166.21 -	9.98	
Total	406.49	395.56 -	10.93	

Clutha- Commercial

Clutha Commercial - Median	CV \$285,000	CV \$285,000	
Rate Description	Actual 2025/26	Proposed 2026/27	Variance
Biosecurity - Clutha	4.43	5.02	0.59
Targeted Wilding Trees	2.41	2.42	0.01
Uniform General Charge	73.48	69.71 -	3.77
Navigational Safety	11.18	11.71	0.53
Civil Defence & Emergency Management	37.73	38.12	0.39
Catchment Management - Clutha	11.61	12.06	0.45
River & Waterway Management - Clutha	15.16	15.12 -	0.04
General Rate - Clutha	50.21	47.37 -	2.84
Total	206.21	201.52 -	4.69

Clutha Commercial	CV \$2,860,000	CV \$2,860,000	
Rate Description	Actual 2025/26	Proposed 2026/27	Variance
Biosecurity - Clutha	36.69	38.14	1.45
Targeted Wilding Trees	2.41	2.42	0.01
Uniform General Charge	73.48	69.71 -	3.77
Navigational Safety	11.18	11.71	0.53
Civil Defence & Emergency Management	37.73	38.12	0.39
Lower Clutha Flood Protection & Drainage U2	2,917.20	2,911.43 -	5.77
Catchment Management - Clutha	116.49	121.01	4.52
River & Waterway Management - Clutha	152.09	151.69 -	0.40
General Rate - Clutha	503.90	475.36 -	28.54
Total	3,851.17	3,819.59 -	31.58

Queenstown Lakes- Residential

Queenstown Lakes Residential - Median		CV \$1,825,000	CV \$1,825,000	
Rate Description	Actual 2025/26	Proposed 2026/27	Variance	
Biosecurity - Queenstown	90.52	92.87	2.35	
Targeted Wilding Trees	2.41	2.42	0.01	
Uniform General Charge	73.48	69.71 -	3.77	
Civil Defence & Emergency Management	37.73	38.12	0.39	
Wakatipu Transport Class B	152.79	184.04	31.25	
Catchment Management - Queenstown	72.96	74.54	1.58	
River & Waterway Management - Queenstown	16.30	15.99 -	0.31	
General Rate - Queenstown	315.65	292.79 -	22.86	
Total	761.84	770.47	8.63	

Queenstown Lakes Residential - Wanaka Residential		CV \$1,790,000	CV \$1,790,000	
Rate Description	Actual 2025/26	Proposed 2026/27	Variance	
Biosecurity - Queenstown	77.81	79.84	2.03	
Targeted Wilding Trees	2.41	2.42	0.01	
Uniform General Charge	73.48	69.71 -	3.77	
Civil Defence & Emergency Management	37.73	38.12	0.39	
Catchment Management - Queenstown	71.56	73.11	1.55	
River & Waterway Management - Queenstown	15.98	15.68 -	0.30	
General Rate - Queenstown	309.60	287.18 -	22.42	
Total	588.57	566.05	-22.52	

Queenstown Lakes Residential - Shotover Country Residential		CV \$1,650,000	CV \$1,650,000	
Rate Description	Actual 2025/26	Proposed 2026/27	Variance	
Biosecurity - Queenstown	38.11	39.10	0.99	
Targeted Wilding Trees	2.41	2.42	0.01	
Uniform General Charge	73.48	69.71 -	3.77	
Civil Defence & Emergency Management	37.73	38.12	0.39	
Wakatipu Transport Class B	138.14	166.39	28.25	
Catchment Management - Queenstown	65.97	67.39	1.42	
River & Waterway Management - Queenstown	14.73	14.46 -	0.27	
General Rate - Queenstown	285.38	264.72 -	20.66	
Total	655.95	662.30	6.35	

Queenstown Lakes Residential - Luggate Residential		CV \$930,000	CV \$930,000	
Rate Description	Actual 2025/26	Proposed 2026/27	Variance	
Biosecurity - Queenstown	31.12	31.93	0.81	
Targeted Wilding Trees	2.41	2.42	0.01	
Uniform General Charge	73.48	69.71 -	3.77	
Civil Defence & Emergency Management	37.73	38.12	0.39	
Catchment Management - Queenstown	37.18	37.98	0.80	
River & Waterway Management - Queenstown	8.30	8.15 -	0.15	
General Rate - Queenstown	160.85	149.20 -	11.65	
Total	351.07	337.51	-13.56	

Queenstown Lakes- Rural/Lifestyle

Queenstown Lakes Rural/Lifestyle- Median		CV \$4,430,000	CV \$4,430,000	
Rate Description	Actual 2025/26	Proposed 2026/27	Variance	
Biosecurity - Queenstown	214.70	220.29	-	5.59
Targeted Wilding Trees	2.41	2.41	-	-
Uniform General Charge	73.48	69.71	-	3.77
Civil Defence & Emergency Management	37.73	38.12	-	0.39
Wakatipu Transport Class B	370.88	446.74	-	75.86
Catchment Management - Queenstown	177.11	180.93	-	3.82
River & Waterway Management - Queenstown	39.56	38.81	-	0.75
General Rate - Queenstown	766.21	710.72	-	55.49
	1,682.08	1,707.73	-	25.65

Queenstown Lakes Rural/Lifestyle - Wanaka Lifestyle		CV \$4,570,000	CV \$4,570,000	
Rate Description	Actual 2025/26	Proposed 2026/27	Variance	
Biosecurity - Queenstown	231.21	237.23	-	6.02
Targeted Wilding Trees	2.41	2.42	-	0.01
Uniform General Charge	73.48	69.71	-	3.77
Civil Defence & Emergency Management	37.73	38.12	-	0.39
Catchment Management - Queenstown	182.71	186.65	-	3.94
River & Waterway Management - Queenstown	40.81	40.04	-	0.77
General Rate - Queenstown	790.43	733.18	-	57.25
Total	1,358.78	1,307.35	-	51.43

Queenstown Lakes- Commercial

Queenstown Lakes Commercial- Median		CV \$7,460,000	CV \$7,460,000	
Rate Description	Actual 2025/26	Proposed 2026/27		Variance
Biosecurity - Queenstown	245.38	251.76		6.38
Targeted Wilding Trees	2.41	2.42		0.01
Uniform General Charge	73.48	69.71	-	3.77
Civil Defence & Emergency Management	37.73	38.12		0.39
Wakatipu Transport Class A	1,280.75	1,542.72		261.97
Catchment Management - Queenstown	305.81	312.40		6.59
River & Waterway Management - Queenstown	68.31	67.01	-	1.30
General Rate - Queenstown	1,322.97	1,227.16	-	95.81
Total	3,336.84	3,511.29		174.45

Queenstown Lakes Commercial - Queenstown Hotel		CV \$127,350,000	CV \$127,350,000	
Rate Description	Actual 2025/26	Proposed 2026/27		Variance
Biosecurity - Queenstown	3,264.93	3,349.91		84.98
Targeted Wilding Trees	2.41	2.42		0.01
Uniform General Charge	73.48	69.71	-	3.77
Civil Defence & Emergency Management	37.73	38.12		0.39
Wakatipu Transport Class A	21,323.48	25,685.19		4,361.71
Catchment Management - Queenstown	5,091.45	5,201.23		109.78
River & Waterway Management - Queenstown	1,137.24	1,115.80	-	21.44
General Rate - Queenstown	22,026.46	20,431.31	-	1,595.15
Total	52,957.18	55,893.69		2,936.51

Queenstown Lakes Commercial - Wanaka		CV \$12,520,000	CV \$12,520,000	
Rate Description	Actual 2025/26	Proposed 2026/27		Variance
Biosecurity - Queenstown	549.45	563.75	-	14.30
Targeted Wilding Trees	2.41	2.41		-
Uniform General Charge	73.48	69.70		3.78
Civil Defence & Emergency Management	37.73	38.11	-	0.38
Catchment Management - Queenstown	500.55	511.34	-	10.79
River & Waterway Management - Queenstown	111.80	109.70		2.10
General Rate - Queenstown	2,165.46	2,008.64		156.82
Total	3,440.88	3,303.65		137.23

Queenstown Lakes Commercial - Queenstown Airport Terminal		CV\$121,000,000	CV \$126,000,000	
Rate Description	Actual 2025/26	Proposed 2026/27		Variance
Biosecurity - Queenstown	3,048.96	3,454.18		405.22
Targeted Wilding Trees	2.41	2.42		0.01
Uniform General Charge	73.48	69.71	-	3.77
Civil Defence & Emergency Management	37.73	38.12		0.39
Wakatipu Transport Class A	20,260.24	25,412.91		5,152.67
Catchment Management - Queenstown	4,837.58	5,146.09		308.51
River & Waterway Management - Queenstown	1,080.53	1,103.98		23.45
General Rate - Queenstown	20,260.24	20,214.72	-	45.52
Total	49,601.17	55,442.13		5,840.96

Waitaki- Residential

Waitaki Residential - Median	CV \$430,000	CV \$430,000	
Rate Description	Actual 2025/26	Proposed 2026/27	Variance
Biosecurity - Waitaki	18.04	18.55	0.51
Targeted Wilding Trees	2.41	2.42	0.01
Uniform General Charge	73.48	69.71 -	3.77
Navigational Safety	11.18	11.71	0.53
Civil Defence & Emergency Management	37.73	38.12	0.39
Catchment Management - Waitaki	16.20	16.61	0.41
River & Waterway Management - Waitaki	33.31	32.33 -	0.98
General Rate - Waitaki	70.10	65.24 -	4.86
Total	262.45	254.68	-7.77

Waitaki Residential - Palmerston	CV \$510,000	CV \$510,000	
Rate Description	Actual 2025/26	Proposed 2026/27	Variance
Biosecurity - Waitaki	15.79	16.23	0.44
Targeted Wilding Trees	2.41	2.42	0.01
Uniform General Charge	73.48	69.71 -	3.77
Navigational Safety	11.18	11.71	0.53
Civil Defence & Emergency Management	37.73	38.12	0.39
Dunedin Transport Class B - Waitaki	142.19	136.62 -	5.57
Catchment Management - Waitaki	20.92	21.44	0.52
River & Waterway Management - Waitaki	43.01	41.75 -	1.26
General Rate - Waitaki	90.50	84.23 -	6.27
Total	437.21	422.22 -	14.99

Waitaki Residential - Oamaru	CV \$500,000	CV \$500,000	
Rate Description	Actual 2025/26	Proposed 2026/27	Variance
Biosecurity - Waitaki	9.34	9.60	0.26
Targeted Wilding Trees	2.41	2.42	0.01
Uniform General Charge	73.48	69.71 -	3.77
Navigational Safety	11.18	11.71	0.53
Civil Defence & Emergency Management	37.73	38.12	0.39
Catchment Management - Waitaki	20.51	21.02	0.51
River & Waterway Management - Waitaki	42.17	40.93 -	1.24
General Rate - Waitaki	88.73	82.58 -	6.15
Total	285.55	276.09 -	9.46

Waitaki- Rural/Lifestyle

Waitaki Rural/Lifestyle - Median Rural	CV \$1,750,000	CV \$1,750,000	
Rate Description	Actual 2025/26	Proposed 2026/27	Variance
Biosecurity - Waitaki	101.80	104.65	2.85
Targeted Wilding Trees	2.41	2.42	0.01
Uniform General Charge	73.48	69.71 -	3.77
Navigational Safety	11.18	11.71	0.53
Civil Defence & Emergency Management	37.73	38.12	0.39
Catchment Management - Waitaki	71.79	73.58	1.79
River & Waterway Management - Waitaki	147.58	143.25 -	4.33
General Rate - Waitaki	310.00	289.03 -	20.97
Total	755.97	732.46 -	23.51

Waitaki Rural/Lifestyle - Median Lifestyle	CV \$780,000	CV \$780,000	
Rate Description	Actual 2025/26	Proposed 2026/27	Variance
Biosecurity - Waitaki	25.77	26.49	0.72
Targeted Wilding Trees	2.41	2.42	0.01
Uniform General Charge	73.48	69.71 -	3.77
Navigational Safety	11.18	11.71	0.53
Civil Defence & Emergency Management	37.73	38.12	0.39
Catchment Management - Waitaki	32.00	32.79	0.79
River & Waterway Management - Waitaki	65.78	63.85 -	1.93
General Rate - Waitaki	138.42	128.82 -	9.60
Total	386.77	373.91 -	12.86

Waitaki- Commercial

Waitaki Commercial - Median		CV \$395,000	CV \$395,000	
Rate Description	Actual 2025/26	Proposed 2026/27	Variance	
Biosecurity - Waitaki	18.04	18.55	0.51	
Targeted Wilding Trees	2.41	2.42	0.01	
Uniform General Charge	73.48	69.71 -	3.77	
Navigational Safety	11.18	11.71	0.53	
Civil Defence & Emergency Management	37.73	38.12	0.39	
Catchment Management - Waitaki	16.20	16.61	0.41	
River & Waterway Management - Waitaki	33.31	32.33 -	0.98	
General Rate - Waitaki	70.10	65.24 -	4.86	
Total	262.45	254.68 -	7.77	

Waitaki Commercial - CV \$2,680,000		CV \$2,680,000	CV \$2,680,000	
Rate Description	Actual 2025/26	Proposed 2026/27	Variance	
Biosecurity - Waitaki	59.28	60.93	1.65	
Targeted Wilding Trees	2.41	2.42	0.01	
Uniform General Charge	73.48	69.71 -	3.77	
Navigational Safety	11.18	11.71	0.53	
Civil Defence & Emergency Management	37.73	38.12	0.39	
Catchment Management - Waitaki	109.93	112.68	2.75	
River & Waterway Management - Waitaki	226.00	219.38 -	6.62	
General Rate - Waitaki	475.59	442.63 -	32.96	
Total	995.60	957.57 -	38.03	

Lower Clutha Flood and Drainage

Lower Clutha Flood & Drainage A Rural CV\$1,911,000 (total CV \$19,420,000)			
Rate Description	Actual 2025/26	Proposed 2026/27	Variance
Biosecurity - Clutha	889.20	1,003.69	114.49
Targeted Wilding Trees	2.41	2.42	0.01
Uniform General Charge	73.48	69.71 -	3.77
Navigational Safety	11.18	11.71	0.53
Civil Defence & Emergency Management	37.73	38.12	0.39
Lower Clutha Flood Protection & Drainage F	958.03	1,014.25	56.22
Lower Clutha Flood Protection & Drainage E	4,403.72	4,661.96	258.24
Lower Clutha Flood Protection & Drainage A	13,884.12	14,698.30	814.18
Catchment Management - Clutha	897.01	821.71 -	75.30
River & Waterway Management - Clutha	945.37	1,030.02	84.65
General Rate - Clutha	3,303.15	3,227.81 -	75.34
Total	25,405.40	26,579.70	1,174.30

Lower Clutha Flood & Drainage B Rural			
	CV \$2,540,000	CV \$2,540,000	
Rate Description	Actual 2025/26	Proposed 2026/27	Variance
Biosecurity - Clutha	117.80	122.45	4.65
Targeted Wilding Trees	2.41	2.42	0.01
Uniform General Charge	73.48	69.71 -	3.77
Navigational Safety	11.18	11.71	0.53
Civil Defence & Emergency Management	37.73	38.12	0.39
Lower Clutha Flood Protection & Drainage C	658.92	657.62 -	1.30
Lower Clutha Flood Protection & Drainage B	7,074.72	7,060.72 -	14.00
Catchment Management - Clutha	103.45	107.47	4.02
River & Waterway Management - Clutha	135.08	134.72 -	0.36
General Rate - Clutha	447.52	422.18 -	25.34
Total	8,662.29	8,627.11 -	35.18

Lower Clutha Flood & Drainage C Rural CV \$2,225,000 (total CV \$3,280,000)			
Rate Description	Actual 2025/26	Proposed 2026/27	Variance
Biosecurity - Clutha	177.66	184.68	7.02
Targeted Wilding Trees	2.41	2.42	0.01
Uniform General Charge	73.48	69.71 -	3.77
Navigational Safety	11.18	11.71	0.53
Civil Defence & Emergency Management	37.73	38.12	0.39
Lower Clutha Flood Protection & Drainage D	1,909.55	1,909.28 -	0.27
Lower Clutha Flood Protection & Drainage C	6,430.25	6,417.53 -	12.72
Catchment Management - Clutha	133.59	138.79	5.19
River & Waterway Management - Clutha	174.43	173.97 -	0.46
General Rate - Clutha	577.90	545.17 -	32.73
Total	9,350.52	9,306.69 -	43.83

Lower Clutha Flood & Drainage D Rural CV \$1,608,000 (total CV \$7,700,000)			
Rate Description	Actual 2025/26	Proposed 2026/27	Variance
Biosecurity - Clutha	364.98	379.39	14.41
Targeted Wilding Trees	2.41	2.42	0.01
Uniform General Charge	73.48	69.71 -	3.77
Navigational Safety	11.18	11.71	0.53
Civil Defence & Emergency Management	37.73	38.12	0.39
Lower Clutha Flood Protection & Drainage D	2,910.48	2,910.07 -	0.41
Lower Clutha Flood Protection & Drainage C	17,605.88	17,571.05 -	34.83
Catchment Management - Clutha	313.62	325.81	12.19
River & Waterway Management - Clutha	409.49	408.40 -	1.09
General Rate - Clutha	1,356.66	1,279.82 -	76.84
Total	22,720.93	22,617.10 -	103.83

Lower Clutha Flood & Drainage E Rural CV \$2,205,000 (total CV \$3,320,000)			
Rate Description	Actual 2025/26	Proposed 2026/27	Variance
Biosecurity - Clutha	173.80	180.66	6.86
Targeted Wilding Trees	2.41	2.42	0.01
Uniform General Charge	73.48	69.71 -	3.77
Navigational Safety	11.18	11.71	0.53
Civil Defence & Emergency Management	37.73	38.12	0.39
Lower Clutha Flood Protection & Drainage F	122.65	126.12	3.47
Lower Clutha Flood Protection & Drainage E	2,116.80	2,119.95	3.15
Catchment Management - Clutha	135.22	140.48	5.26
River & Waterway Management - Clutha	176.56	176.09 -	0.47
General Rate - Clutha	584.95	551.82 -	33.13
Total	3,260.98	3,236.40 -	24.58

Lower Clutha Flood & Drainage F Rural		CV \$2,965,000	CV \$2,965,000	
Rate Description	Actual 2025/26	Proposed 2026/27	Variance	
Biosecurity - Clutha	171.22	177.99	6.77	
Targeted Wilding Trees	2.41	2.42	0.01	
Uniform General Charge	73.48	69.71 -	3.77	
Navigational Safety	11.18	11.71	0.53	
Civil Defence & Emergency Management	37.73	38.12	0.39	
Lower Clutha Flood Protection & Drainage F	326.15	335.37	9.22	
Catchment Management - Clutha	120.76	125.46	4.70	
River & Waterway Management - Clutha	157.68	157.26 -	0.42	
General Rate - Clutha	522.40	492.81 -	29.59	
Total	1,423.01	1,410.84 -	12.17	

Lower Clutha Flood & Drainage U1 Rural CV \$116,000 (total CV \$290,000)			
Rate Description	Actual 2025/26	Proposed 2026/27	Variance
Biosecurity - Clutha	17.70	18.40	0.70
Targeted Wilding Trees	2.41	2.42	0.01
Uniform General Charge	73.48	69.71 -	3.77
Navigational Safety	11.18	11.71	0.53
Civil Defence & Emergency Management	37.73	38.12	0.39
Lower Clutha Flood Protection & Drainage U4	7.82	7.80 -	0.02
Lower Clutha Flood Protection & Drainage U2	130.56	130.30 -	0.26
Lower Clutha Flood Protection & Drainage U1	354.96	354.26 -	0.70
Catchment Management - Clutha	11.81	12.27	0.46
River & Waterway Management - Clutha	15.42	15.38 -	0.04
General Rate - Clutha	51.10	48.20 -	2.90
Total	694.06	687.75 -	6.31

Lower Clutha Flood & Drainage U2 Residential CV \$355,000 CV \$355,000			
Rate Description	Actual 2025/26	Proposed 2026/27	Variance
Biosecurity - Clutha	6.12	6.36	0.24
Targeted Wilding Trees	2.41	2.42	0.01
Uniform General Charge	73.48	69.71 -	3.77
Navigational Safety	11.18	11.71	0.53
Civil Defence & Emergency Management	37.73	38.12	0.39
Lower Clutha Flood Protection & Drainage U2	362.10	361.38 -	0.72
Catchment Management - Clutha	14.46	15.02	0.56
River & Waterway Management - Clutha	18.88	18.83 -	0.05
General Rate - Clutha	62.55	59.00 -	3.55
Total	588.91	582.55 -	6.36

Lower Clutha Flood & Drainage U3 Residential CV \$355,000			
Rate Description	Actual 2025/26	Proposed 2026/27	Variance
Biosecurity - Clutha	5.47	5.69	0.22
Targeted Wilding Trees	2.41	2.42	0.01
Uniform General Charge	73.48	69.71 -	3.77
Navigational Safety	11.18	11.71	0.53
Civil Defence & Emergency Management	37.73	38.12	0.39
Lower Clutha Flood Protection & Drainage U3	78.10	80.31	2.21
Catchment Management - Clutha	14.46	15.02	0.56
River & Waterway Management - Clutha	18.88	18.83 -	0.05
General Rate - Clutha	62.55	59.00 -	3.55
Total	304.26	300.80 -	3.46

Lower Clutha Flood & Drainage U4 Residential CV \$655,000			
Rate Description	Actual 2025/26	Proposed 2026/27	Variance
Biosecurity - Clutha	8.37	8.70	0.33
Targeted Wilding Trees	2.41	2.42	0.01
Uniform General Charge	73.48	69.71 -	3.77
Navigational Safety	11.18	11.71	0.53
Civil Defence & Emergency Management	37.73	38.12	0.39
Lower Clutha Flood Protection & Drainage U4	111.35	111.13 -	0.22
Catchment Management - Clutha	26.68	27.71	1.03
River & Waterway Management - Clutha	34.83	34.74 -	0.09
General Rate - Clutha	115.40	108.87 -	6.53
Total	421.43	413.10 -	8.33

Lower Taieri Flood

Lower Taieri Flood WF1 Rural		CV \$2,330,000	CV 2,280,000	
Rate Description	Actual 2025/26	Proposed 2026/27		Variance
Biosecurity - Dunedin	117.79	119.22		1.43
Targeted Wilding Trees	2.41	2.42		0.01
Uniform General Charge	73.48	69.71	-	3.77
Navigational Safety	11.18	11.71		0.53
Civil Defence & Emergency Management	37.73	38.12		0.39
Lower Taieri Flood Protection WF1	3,321.93	3,235.27	-	86.66
Leith Flood Indirect	39.12	37.96	-	1.16
Catchment Management - Dunedin	90.24	91.18		0.94
River & Waterway Management - Dunedin	15.91	15.45	-	0.46
West Taieri Drainage - WD1	6,356.70	6,352.71	-	3.99
General Rate - Dunedin	390.39	358.17	-	32.22
Total	10,456.88	10,331.90	-	124.98

Lower Taieri Flood WF2 Lifestyle		CV \$1,060,000	CV 1,040,000	
Rate Description	Actual 2025/26	Proposed 2026/27		Variance
Biosecurity - Dunedin	37.62	37.82		0.20
Targeted Wilding Trees	2.41	2.42		0.01
Uniform General Charge	73.48	69.71	-	3.77
Navigational Safety	11.18	11.71		0.53
Civil Defence & Emergency Management	37.73	38.12		0.39
Lower Taieri Flood Protection WF2	1,511.26	1,475.74	-	35.52
Leith Flood Indirect	17.80	17.31	-	0.49
Catchment Management - Dunedin	41.05	41.59		0.54
River & Waterway Management - Dunedin	7.24	7.05	-	0.19
West Taieri Drainage - WD5	158.75	158.65	-	0.10
General Rate - Dunedin	177.60	163.37	-	14.23
Total	2,076.12	2,023.48	-	52.64

Lower Taieri Flood EF1 Rural		CV \$1,600,000	CV 1,700,000	
Rate Description	Actual 2025/26	Proposed 2026/27		Variance
Biosecurity - Dunedin	96.21	104.47		8.26
Targeted Wilding Trees	2.41	2.42		0.01
Uniform General Charge	73.48	69.71	-	3.77
Navigational Safety	11.18	11.71		0.53
Civil Defence & Emergency Management	37.73	38.12		0.39
Lower Taieri Flood Protection EF1	51.25	51.12	-	0.13
Leith Flood Indirect	26.86	28.30		1.44
Catchment Management - Dunedin	61.97	67.98		6.01
River & Waterway Management - Dunedin	10.93	11.52		0.59
East Taieri Drainage - ED1	10,140.22	10,140.46		0.24
General Rate - Dunedin	268.08	267.05	-	1.03
Total	10,780.32	10,792.87		12.55

Lower Taieri Flood EF2 Rural		CV \$2,650,000	CV \$2,650,000	
Rate Description	Actual 2025/26	Proposed 2026/27		Variance
Biosecurity - Dunedin	102.99	107.04		4.05
Targeted Wilding Trees	2.41	2.42		0.01
Uniform General Charge	73.48	69.71	-	3.77
Navigational Safety	11.18	11.71		0.53
Civil Defence & Emergency Management	37.73	38.12		0.39
Lower Taieri Flood Protection EF2	66.14	62.10	-	4.04
Leith Flood Indirect	34.67	34.38	-	0.29
Catchment Management - Dunedin	79.98	82.58		2.60
River & Waterway Management - Dunedin	14.10	13.99	-	0.11
East Taieri Drainage - ED2	7,351.75	7,351.92		0.17
General Rate - Dunedin	345.99	324.39	-	21.60
Total	8,120.42	8,098.35	-	22.07

Lower Taieri Flood EF3 Rural - CV \$370,000 (Total CV \$2,010,000)				
Rate Description	Actual 2025/26	Proposed 2026/27		Variance
Biosecurity - Dunedin	120.26	124.99		4.73
Targeted Wilding Trees	2.41	2.42		0.01
Uniform General Charge	73.48	69.71	-	3.77
Navigational Safety	11.18	11.71		0.53
Civil Defence & Emergency Management	37.73	38.12		0.39
Lower Taieri Flood Protection EF3	11.85	11.13	-	0.72
Lower Taieri Flood Protection EF2	37.60	35.30	-	2.30
Leith Flood Indirect	33.75	33.46	-	0.29
Catchment Management - Dunedin	77.85	80.38		2.53
River & Waterway Management - Dunedin	13.73	13.62	-	0.11
East Taieri Drainage - ED2	8,103.96	8,104.15		0.19
General Rate - Dunedin	336.78	315.75	-	21.03
Total	8,860.58	8,840.73	-	19.85

Lower Taieri Flood EF4 Lifestyle		CV \$1,550,000	CV \$1,480,000	
Rate Description	Actual 2025/26	Proposed 2026/27		Variance
Biosecurity - Dunedin	37.00	33.97	-	3.03
Targeted Wilding Trees	2.41	2.42		0.01
Uniform General Charge	73.48	69.71	-	3.77
Navigational Safety	11.18	11.71		0.53
Civil Defence & Emergency Management	37.73	38.12		0.39
Lower Taieri Flood Protection EF4	49.65	44.51	-	5.14
Leith Flood Indirect	26.02	24.64	-	1.38
Catchment Management - Dunedin	60.03	59.19	-	0.84
River & Waterway Management - Dunedin	10.59	10.03	-	0.56
East Taieri Drainage - ED4	1,006.13	1,006.15		0.02
General Rate - Dunedin	259.70	232.49	-	27.21
Total	1,573.92	1,532.93	-	40.99

Lower Taieri Flood EF5 Lifestyle		CV \$1,350,000	CV 1,310,000	
Rate Description	Actual 2025/26	Proposed 2026/27	Variance	
Biosecurity - Dunedin	41.94	39.74 -	2.20	
Targeted Wilding Trees	2.41	2.42	0.01	
Uniform General Charge	73.48	69.71 -	3.77	
Navigational Safety	11.18	11.71	0.53	
Civil Defence & Emergency Management	37.73	38.12	0.39	
Lower Taieri Flood Protection EF5	43.24	39.39 -	3.85	
Leith Flood Indirect	22.67	21.81 -	0.86	
Catchment Management - Dunedin	52.29	52.39	0.10	
River & Waterway Management - Dunedin	9.22	8.87 -	0.35	
East Taieri Drainage - ED9	268.35	268.36	0.01	
General Rate - Dunedin	226.19	205.79 -	20.40	
Total	788.70	758.30	-30.40	

Lower Taieri Flood EF6 Lifestyle - CV \$362,000 (total CV \$1,800,000)				
Rate Description	Actual 2025/26	Proposed 2026/27	Variance	
Biosecurity - Dunedin	67.84	70.50	2.66	
Targeted Wilding Trees	2.41	2.42	0.01	
Uniform General Charge	73.48	69.71 -	3.77	
Navigational Safety	11.18	11.71	0.53	
Civil Defence & Emergency Management	37.73	38.12	0.39	
Lower Taieri Flood Protection EF6	11.59	10.89 -	0.70	
Leith Flood Indirect	30.22	29.97 -	0.25	
Catchment Management - Dunedin	69.71	71.98	2.27	
River & Waterway Management - Dunedin	12.29	12.19 -	0.10	
East Taieri Drainage - ED9	1,803.75	1,803.79	0.04	
General Rate - Dunedin	301.59	282.76 -	18.83	
Total	2,421.79	2,404.04	-17.75	

Lower Taieri Flood EF7 Lifestyle		CV \$1,250,000	CV \$1,130,000	
Rate Description	Actual 2025/26	Proposed 2026/27	Variance	
Biosecurity - Dunedin	40.70	39.10 -	1.60	
Targeted Wilding Trees	2.41	2.42	0.01	
Uniform General Charge	73.48	69.71 -	3.77	
Navigational Safety	11.18	11.71	0.53	
Civil Defence & Emergency Management	37.73	38.12	0.39	
Lower Taieri Flood Protection EF5	40.04	33.98 -	6.06	
Leith Flood Indirect	20.99	18.81 -	2.18	
Catchment Management - Dunedin	48.41	45.19 -	3.22	
River & Waterway Management - Dunedin	8.54	7.66 -	0.88	
East Taieri Drainage - ED9	201.28	201.28	-	
General Rate - Dunedin	209.44	177.51 -	31.93	
Total	694.20	645.48	-48.72	

Lower Taieri Flood EF8 Residential		CV \$1,200,000	CV 1,020,000	
Rate Description	Actual 2025/26	Proposed 2026/27	Variance	
Biosecurity - Dunedin	25.28	25.00 -	0.28	
Targeted Wilding Trees	2.41	2.42	0.01	
Uniform General Charge	73.48	69.71 -	3.77	
Navigational Safety	11.18	11.71	0.53	
Civil Defence & Emergency Management	37.73	38.12	0.39	
Lower Taieri Flood Protection EF8	38.44	30.67 -	7.77	
Leith Flood Indirect	20.15	16.98 -	3.17	
Dunedin Transport Class B - Dunedin	315.89	259.89 -	56.00	
Catchment Management - Dunedin	46.48	40.79 -	5.69	
River & Waterway Management - Dunedin	8.20	6.91 -	1.29	
East Taieri Drainage - ED10	10.11	10.11	0.00	
General Rate - Dunedin	201.06	160.23 -	40.83	
Total	790.41	672.54 -	117.87	

Lower Taieri Flood EF9 Residential		CV \$1,400,000	CV \$1,440,000	
Rate Description	Actual 2025/26	Proposed 2026/27	Variance	
Biosecurity - Dunedin	28.06	27.56 -	0.50	
Targeted Wilding Trees	2.41	2.42	0.01	
Uniform General Charge	73.48	69.71 -	3.77	
Navigational Safety	11.18	11.71	0.53	
Civil Defence & Emergency Management	37.73	38.12	0.39	
Lower Taieri Flood Protection EF9	44.84	43.30 -	1.54	
Leith Flood Indirect	23.51	23.97	0.46	
Dunedin Transport Class B - Dunedin	368.54	366.90 -	1.64	
Catchment Management - Dunedin	54.22	57.59	3.37	
River & Waterway Management - Dunedin	9.56	9.76	0.20	
General Rate - Dunedin	234.57	226.21 -	8.36	
Total	888.10	877.25 -	10.85	

Lower Taieri Flood EF10 Lifestyle		CV \$1,750,000	CV \$1,680,000	
Rate Description	Actual 2025/26	Proposed 2026/27	Variance	
Biosecurity - Dunedin	48.72	49.35	0.63	
Targeted Wilding Trees	2.41	2.42	0.01	
Uniform General Charge	73.48	69.71 -	3.77	
Navigational Safety	11.18	11.71	0.53	
Civil Defence & Emergency Management	37.73	38.12	0.39	
Lower Taieri Flood Protection EF10	56.05	50.52 -	5.53	
Leith Flood Indirect	29.38	27.97 -	1.41	
Catchment Management - Dunedin	67.78	67.18 -	0.60	
River & Waterway Management - Dunedin	11.95	11.38 -	0.57	
East Taieri Drainage - ED8	805.07	805.09	0.02	
General Rate - Dunedin	293.21	263.91 -	29.30	
Total	1,436.96	1,397.36 -	39.60	

Lower Taieri Flood EF13 Lifestyle	CV \$1,100,000	CV \$975,000	
Rate Description	Actual 2025/26	Proposed 2026/27	Variance
Biosecurity - Dunedin	36.39	31.41 -	4.98
Targeted Wilding Trees	2.41	2.42	0.01
Uniform General Charge	73.48	69.71 -	3.77
Navigational Safety	11.18	11.71	0.53
Civil Defence & Emergency Management	37.73	38.12	0.39
Lower Taieri Flood Protection EF13	35.23	29.32 -	5.91
Leith Flood Indirect	18.47	16.23 -	2.24
Catchment Management - Dunedin	42.60	38.99 -	3.61
River & Waterway Management - Dunedin	7.51	6.61 -	0.90
East Taieri Drainage - ED1	339.82	339.83	0.01
General Rate - Dunedin	184.31	153.16 -	31.15
Total	789.13	737.50 -	51.63

East Taieri Drainage (Land Area Based)**East Taieri Drainage ED1 area Rural 3.84 Ha (total area 6 Ha)**

Rate Description	Actual 2025/26	Proposed 2026/27	Variance
Biosecurity - Dunedin	37.00	33.97 -	3.03
Targeted Wilding Trees	2.41	2.42	0.01
Uniform General Charge	73.48	69.71 -	3.77
Navigational Safety	11.18	11.71	0.53
Civil Defence & Emergency Management	37.73	38.12	0.39
Lower Taieri Flood Protection EF4	39.24	33.94 -	5.30
Lower Taieri Flood Protection EF1	5.61	4.85 -	0.76
Leith Flood Indirect	23.51	21.48 -	2.03
Catchment Management - Dunedin	54.22	51.59 -	2.63
River & Waterway Management - Dunedin	9.56	8.74 -	0.82
East Taieri Drainage - ED4	358.55	358.56	0.01
East Taieri Drainage - ED1	636.47	636.48	0.01
General Rate - Dunedin	234.57	202.65 -	31.92
Total	1,523.53	1,474.21 -	49.32

East Taieri Drainage ED2 area Rural 44.35 Ha

Rate Description	Actual 2025/26	Proposed 2026/27	Variance
Biosecurity - Dunedin	49.34	46.15 -	3.19
Targeted Wilding Trees	2.41	2.42	0.01
Uniform General Charge	73.48	69.71 -	3.77
Navigational Safety	11.18	11.71	0.53
Civil Defence & Emergency Management	37.73	38.12	0.39
Lower Taieri Flood Protection EF2	51.25	43.60 -	7.65
Leith Flood Indirect	26.86	24.14 -	2.72
Catchment Management - Dunedin	61.97	57.99 -	3.98
River & Waterway Management - Dunedin	10.93	9.82 -	1.11
East Taieri Drainage - ED2	2,676.19	2,676.26	0.07
General Rate - Dunedin	268.08	227.78 -	40.30
Total	3,269.42	3,207.69 -	61.73

East Taieri Drainage ED4 area Lifestyle 3.84 Ha

Rate Description	Actual 2025/26	Proposed 2026/27	Variance
Biosecurity - Dunedin	43.17	41.66 -	1.51
Targeted Wilding Trees	2.41	2.42	0.01
Uniform General Charge	73.48	69.71 -	3.77
Navigational Safety	11.18	11.71	0.53
Civil Defence & Emergency Management	37.73	38.12	0.39
Lower Taieri Flood Protection EF4	60.86	55.33 -	5.53
Leith Flood Indirect	31.90	30.63 -	1.27
Catchment Management - Dunedin	73.59	73.58 -	0.01
River & Waterway Management - Dunedin	12.98	12.47 -	0.52
East Taieri Drainage - ED4	994.69	994.71	0.02
General Rate - Dunedin	318.35	289.05 -	29.30
Total	1,660.34	1,619.38 -	40.96

East Taieri Drainage ED5 area Lifestyle 5.39 Ha			
Rate Description	Actual 2025/26	Proposed 2026/27	Variance
Biosecurity - Dunedin	65.99	64.74 -	1.25
Targeted Wilding Trees	2.41	2.42	0.01
Uniform General Charge	73.48	69.71 -	3.77
Navigational Safety	11.18	11.71	0.53
Civil Defence & Emergency Management	37.73	38.12	0.39
Leith Flood Indirect	35.93	32.96 -	2.97
Catchment Management - Dunedin	82.88	79.18 -	3.70
River & Waterway Management - Dunedin	14.62	13.41 -	1.21
East Taieri Drainage - ED5	894.23	894.25	0.02
General Rate - Dunedin	358.56	311.04 -	47.52
Total	1,577.01	1,517.53 -	59.48

East Taieri Drainage ED7 area Residential 0.05 Ha			
Rate Description	Actual 2025/26	Proposed 2026/27	Variance
Biosecurity - Dunedin	24.67	24.36 -	0.31
Targeted Wilding Trees	2.41	2.42	0.01
Uniform General Charge	73.48	69.71 -	3.77
Navigational Safety	11.18	11.71	0.53
Civil Defence & Emergency Management	37.73	38.12	0.39
Lower Taieri Flood Protection EF8	16.66	15.34 -	1.32
Leith Flood Indirect	8.73	8.49 -	0.24
Dunedin Transport Class B - Dunedin	136.88	129.95 -	6.93
Catchment Management - Dunedin	20.14	20.40	0.26
River & Waterway Management - Dunedin	3.55	3.46 -	0.09
East Taieri Drainage - ED7	8.29	8.29 -	0.00
General Rate - Dunedin	87.00	80.12 -	6.88
Total	430.72	412.34 -	18.38

East Taieri Drainage ED8 area Residential 0.83 Ha			
Rate Description	Actual 2025/26	Proposed 2026/27	Variance
Biosecurity - Dunedin	61.67	64.09	2.42
Targeted Wilding Trees	2.41	2.42	0.01
Uniform General Charge	73.48	69.71 -	3.77
Navigational Safety	11.18	11.71	0.53
Civil Defence & Emergency Management	37.73	38.12	0.39
Leith Flood Indirect	29.38	28.97 -	0.41
Catchment Management - Dunedin	67.78	69.58	1.80
River & Waterway Management - Dunedin	11.95	11.79 -	0.16
East Taieri Drainage - ED8	138.64	138.64	-
East Taieri Drainage - ED5	1,773.94	1,773.98	0.04
General Rate - Dunedin	293.21	273.34 -	19.87
Total	2,501.37	2,482.34 -	19.03

East Taieri Drainage ED9 area Residential 0.08 Ha			
Rate Description	Actual 2025/26	Proposed 2026/27	Variance
Biosecurity - Dunedin	23.13	22.75 -	0.38
Targeted Wilding Trees	2.41	2.42	0.01
Uniform General Charge	73.48	69.71 -	3.77
Navigational Safety	11.18	11.71	0.53
Civil Defence & Emergency Management	37.73	38.12	0.39
Leith Flood Indirect	21.49	21.81	0.32
Dunedin Transport Class B - Dunedin	336.95	333.78 -	3.17
Catchment Management - Dunedin	49.57	52.39	2.82
River & Waterway Management - Dunedin	8.74	8.87	0.13
East Taieri Drainage - ED9	13.74	13.74	0.00
General Rate - Dunedin	214.46	205.79 -	8.67
Total	792.88	781.09 -	11.79

East Taieri Drainage ED10 area Lifestyle 0.66 Ha			
Rate Description	Actual 2025/26	Proposed 2026/27	Variance
Biosecurity - Dunedin	33.92	37.18	3.26
Targeted Wilding Trees	2.41	2.42	0.01
Uniform General Charge	73.48	69.71 -	3.77
Navigational Safety	11.18	11.71	0.53
Civil Defence & Emergency Management	37.73	38.12	0.39
Lower Taieri Flood Protection EF9	45.16	46.01	0.85
Leith Flood Indirect	23.67	25.47	1.80
Dunedin Transport Class B - Dunedin	371.17	389.84	18.67
Catchment Management - Dunedin	54.61	61.19	6.58
River & Waterway Management - Dunedin	9.63	10.36	0.73
East Taieri Drainage - ED10	110.10	110.10 -	0.00
General Rate - Dunedin	236.25	240.35	4.10
Total	1,009.31	1,042.44	33.13

West Taieri Drainage (Land Area based)

West Taieri Drainage WD1 area Lifestyle 4.65 Ha				
Rate Description	Actual 2025/26	Proposed 2026/27		Variance
Biosecurity - Dunedin	38.85	38.46	-	0.39
Targeted Wilding Trees	2.41	2.42		0.01
Uniform General Charge	73.48	69.71	-	3.77
Navigational Safety	11.18	11.71		0.53
Civil Defence & Emergency Management	37.73	38.12		0.39
Lower Taieri Flood Protection WF1	1,682.35	1,603.45	-	78.90
Leith Flood Indirect	19.81	18.81	-	1.00
Catchment Management - Dunedin	45.70	45.19	-	0.51
River & Waterway Management - Dunedin	8.06	7.66	-	0.40
West Taieri Drainage - WD1	603.91	603.53	-	0.38
General Rate - Dunedin	197.71	177.51	-	20.20
Total	2,721.19	2,616.56	-	104.63

West Taieri Drainage WD2 area Lifestyle 4.05 Ha				
Rate Description	Actual 2025/26	Proposed 2026/27		Variance
Biosecurity - Dunedin	33.30	32.69	-	0.61
Targeted Wilding Trees	2.41	2.42		0.01
Uniform General Charge	73.48	69.71	-	3.77
Navigational Safety	11.18	11.71		0.53
Civil Defence & Emergency Management	37.73	38.12		0.39
Lower Taieri Flood Protection WF2	1,354.43	1,277.08	-	77.35
Leith Flood Indirect	15.95	14.98	-	0.97
Catchment Management - Dunedin	36.79	35.99	-	0.80
River & Waterway Management - Dunedin	6.49	6.10	-	0.39
West Taieri Drainage - WD2	525.48	525.15	-	0.33
General Rate - Dunedin	159.17	141.38	-	17.79
Total	2,256.41	2,155.33	-	101.08

West Taieri Drainage WD3 area Rural 2.58 Ha				
Rate Description	Actual 2025/26	Proposed 2026/27		Variance
Biosecurity - Dunedin	4.26	4.42		0.16
Targeted Wilding Trees	2.41	2.42		0.01
Uniform General Charge	73.48	69.71	-	3.77
Navigational Safety	11.18	11.71		0.53
Civil Defence & Emergency Management	37.73	38.12		0.39
Leith Flood Indirect	1.23	1.22	-	0.01
Catchment Management - Dunedin	2.83	2.92		0.09
River & Waterway Management - Dunedin	0.50	0.49	-	0.01
West Taieri Drainage - WD3	335.01	334.80	-	0.21
General Rate - Dunedin	12.23	11.47	-	0.76
Total	480.86	477.27		-3.59

West Taieri Drainage WD4 area Rural 8.04 Ha (total 8.58 Ha)			
Rate Description	Actual 2025/26	Proposed 2026/27	Variance
Biosecurity - Dunedin	19.73	20.51	0.78
Targeted Wilding Trees	2.41	2.42	0.01
Uniform General Charge	73.48	69.71 -	3.77
Navigational Safety	11.18	11.71	0.53
Civil Defence & Emergency Management	37.73	38.12	0.39
Leith Flood Indirect	5.48	5.44 -	0.04
Catchment Management - Dunedin	12.65	13.08	0.43
River & Waterway Management - Dunedin	2.23	2.22 -	0.01
West Taieri Drainage - WD4	1,043.70	1,043.04 -	0.66
General Rate - Dunedin	54.71	51.37 -	3.34
Total	1,263.30	1,257.61 -	5.69

West Taieri Drainage WD5 area Residential 0.2 Ha			
Rate Description	Actual 2025/26	Proposed 2026/27	Variance
Biosecurity - Dunedin	29.60	24.36 -	5.24
Targeted Wilding Trees	2.41	2.42	0.01
Uniform General Charge	73.48	69.71 -	3.77
Navigational Safety	11.18	11.71	0.53
Civil Defence & Emergency Management	37.73	38.12	0.39
Lower Taieri Flood Protection WF2	1,112.06	1,120.99	8.93
Leith Flood Indirect	13.10	13.15	0.05
Catchment Management - Dunedin	30.21	31.59	1.38
River & Waterway Management - Dunedin	5.33	5.35	0.02
West Taieri Drainage - WD5	26.25	26.23 -	0.02
General Rate - Dunedin	130.69	124.10 -	6.59
Total	1,472.04	1,467.73 -	4.31

Tokomairiro Drainage

Tokomairiro Drainage A Rural		CV \$660,000	CV \$660,000	
Rate Description	Actual 2025/26	Proposed 2026/27	Variance	
Biosecurity - Clutha	40.55	42.16	1.61	
Targeted Wilding Trees	2.41	2.42	0.01	
Uniform General Charge	73.48	69.71 -	3.77	
Navigational Safety	11.18	11.71	0.53	
Civil Defence & Emergency Management	37.73	38.12	0.39	
Tokomairiro Drainage A	115.77	115.16 -	0.61	
Catchment Management - Clutha	26.88	27.93	1.05	
River & Waterway Management - Clutha	35.10	35.01 -	0.09	
General Rate - Clutha	116.29	109.70 -	6.59	
Total	459.39	451.90 -	7.49	

Tokomairiro Drainage B Lifestyle		CV \$460,000	CV \$460,000	
Rate Description	Actual 2025/26	Proposed 2026/27	Variance	
Biosecurity - Clutha	19.95	20.74	0.79	
Targeted Wilding Trees	2.41	2.42	0.01	
Uniform General Charge	73.48	69.71 -	3.77	
Navigational Safety	11.18	11.71	0.53	
Civil Defence & Emergency Management	37.73	38.12	0.39	
Tokomairiro Drainage B	80.69	80.26 -	0.43	
Catchment Management - Clutha	18.74	19.46	0.72	
River & Waterway Management - Clutha	24.46	24.40 -	0.06	
General Rate - Clutha	81.05	76.46 -	4.59	
Total	349.69	343.28 -	6.41	

Tokomairiro Drainage C Rural - CV \$1,663,000 (total CV \$1,890,000)		Actual	Proposed	Variance
Rate Description	2025/26	2026/27		
Biosecurity - Clutha	96.56	100.37	3.81	
Targeted Wilding Trees	2.41	2.42	0.01	
Uniform General Charge	73.48	69.71 -	3.77	
Navigational Safety	11.18	11.71	0.53	
Civil Defence & Emergency Management	37.73	38.12	0.39	
Tokomairiro Drainage D	39.82	39.61 -	0.21	
Tokomairiro Drainage C	291.71	290.16 -	1.55	
Catchment Management - Clutha	76.98	79.97	2.99	
River & Waterway Management - Clutha	100.51	100.24 -	0.27	
General Rate - Clutha	333.00	314.14 -	18.86	
Total	1,063.38	1,046.45 -	16.93	

Tokomairiro Drainage D Rural		CV \$1,205,000	CV \$1,205,000	
Rate Description	Actual 2025/26	Proposed 2026/27	Variance	
Biosecurity - Clutha	74.67	77.62	2.95	
Targeted Wilding Trees	2.41	2.42	0.01	
Uniform General Charge	73.48	69.71 -	3.77	
Navigational Safety	11.18	11.71	0.53	
Civil Defence & Emergency Management	37.73	38.12	0.39	
Tokomairiro Drainage D	211.37	210.25 -	1.12	
Catchment Management - Clutha	49.08	50.99	1.91	
River & Waterway Management - Clutha	64.08	63.91 -	0.17	
General Rate - Clutha	212.31	200.28 -	12.03	
Total	736.31	725.00 -	11.31	

Tokomairiro Drainage E Residential		CV \$650,000	CV \$650,000	
Rate Description	Actual 2025/26	Proposed 2026/27	Variance	
Biosecurity - Clutha	7.72	8.03	0.31	
Targeted Wilding Trees	2.41	2.42	0.01	
Uniform General Charge	73.48	69.71 -	3.77	
Navigational Safety	11.18	11.71	0.53	
Civil Defence & Emergency Management	37.73	38.12	0.39	
Tokomairiro Drainage E	114.02	113.41 -	0.61	
Catchment Management - Clutha	26.47	27.50	1.03	
River & Waterway Management - Clutha	34.57	34.48 -	0.09	
General Rate - Clutha	114.52	108.04 -	6.48	
Total	422.10	413.41 -	8.69	

Tokomairiro Drainage F Rural		CV \$4,260,000	CV \$4,260,000	
Rate Description	Actual 2025/26	Proposed 2026/27	Variance	
Biosecurity - Clutha	215.64	224.16	8.52	
Targeted Wilding Trees	2.41	2.42	0.01	
Uniform General Charge	73.48	69.71 -	3.77	
Navigational Safety	11.18	11.71	0.53	
Civil Defence & Emergency Management	37.73	38.12	0.39	
Tokomairiro Drainage F	747.25	743.29 -	3.96	
Catchment Management - Clutha	173.51	180.25	6.74	
River & Waterway Management - Clutha	226.55	225.95 -	0.60	
General Rate - Clutha	750.57	708.06 -	42.51	
Total	2,238.32	2,203.66 -	34.66	

Tokomairiro Drainage U1 Residential	CV \$390,000	CV \$390,000	
Rate Description	Actual 2025/26	Proposed 2026/27	Variance
Biosecurity - Clutha	10.62	11.04	0.42
Targeted Wilding Trees	2.41	2.42	0.01
Uniform General Charge	73.48	69.71 -	3.77
Navigational Safety	11.18	11.71	0.53
Civil Defence & Emergency Management	37.73	38.12	0.39
Tokomairiro Drainage U1	37.95	37.92 -	0.03
Catchment Management - Clutha	15.88	16.50	0.62
River & Waterway Management - Clutha	20.74	20.69 -	0.05
General Rate - Clutha	68.71	64.82 -	3.89
Total	278.70	272.92 -	5.78

Leith Flood

Leith Flood Indirect Median Residential		Cv \$820,000	CV \$780,000	
Rate Description	Actual 2025/26	Proposed 2026/27	Variance	
Biosecurity - Dunedin	26.21	25.96 -	0.25	
Targeted Wilding Trees	2.41	2.42	0.01	
Uniform General Charge	73.48	69.71 -	3.77	
Navigational Safety	11.18	11.71	0.53	
Civil Defence & Emergency Management	37.73	38.12	0.39	
Dunedin Transport Class B	215.86	198.74 -	17.12	
Leith Flood Indirect	13.77	12.99 -	0.78	
Catchment Management - Dunedin	31.76	31.19 -	0.57	
River & Waterway Management - Dunedin	5.60	5.28 -	0.32	
General Rate - Dunedin	137.39	122.53 -	14.86	
Total	555.39	518.64 -	36.75	

Leith Flood Direct Median Residential		CV \$1,380,000	CV \$1,275,000	
Rate Description	Actual 2025/26	Proposed 2026/27	Variance	
Biosecurity - Dunedin	37.62	39.09	1.47	
Targeted Wilding Trees	2.41	2.42	0.01	
Uniform General Charge	73.48	69.71 -	3.77	
Navigational Safety	11.18	11.71	0.53	
Civil Defence & Emergency Management	37.73	38.12	0.39	
Leith Flood Direct	585.13	547.30 -	37.83	
Dunedin Transport Class B - Dunedin	363.27	324.86 -	38.41	
Catchment Management - Dunedin	53.45	50.99 -	2.46	
River & Waterway Management - Dunedin	9.43	8.64 -	0.79	
General Rate - Dunedin	231.22	200.29 -	30.93	
Total	1,404.92	1,293.12 -	111.80	

Selected Properties

Selected Properties -Central Clyde Dam		CV \$709,200,000	CV \$2,900,000,000	
Rate Description	Actual 2025/26	Proposed 2026/27	Variance	
Biosecurity - Central Otago	181.12	198.33	17.21	
Targeted Wilding Trees	2.41	2.42	0.01	
Uniform General Charge	73.48	69.71 -	3.77	
Navigational Safety	11.18	11.71	0.53	
Civil Defence & Emergency Management	37.73	38.12	0.39	
Catchment Management - Central Otago	29,233.22	115,880.85	86,647.63	
River & Waterway Management - Central Otago	22,410.72	75,755.62	53,344.90	
General Rate - Central Otago	126,464.54	455,199.58	328,735.04	
Total	178,414.40	647,156.33	468,741.93	

Selected Properties -Central Roxburgh Dam		CV \$346,950,000	CV \$1,200,000,000	
Rate Description	Actual 2025/26	Proposed 2026/27	Variance	
Biosecurity - Central Otago	179.16	144.42 -	34.74	
Targeted Wilding Trees	2.41	2.42	0.01	
Uniform General Charge	73.48	69.71 -	3.77	
Navigational Safety	11.18	11.71	0.53	
Civil Defence & Emergency Management	37.73	38.12	0.39	
Catchment Management - Central Otago	14,301.28	47,950.70	33,649.42	
River & Waterway Management - Central Otago	10,963.62	31,347.15	20,383.53	
General Rate - Central Otago	61,868.12	188,358.45	126,490.33	
Total	87,436.98	267,922.66	180,485.68	

Selected Properties -DCC 3 Waters (Utility)		CV \$335,010,000	CV \$598,600,000	
Rate Description	Actual 2025/26	Proposed 2026/27	Variance	
Targeted Wilding Trees	2.41	2.42	0.01	
Uniform General Charge	73.48	69.71 -	3.77	
Navigational Safety	11.18	11.71	0.53	
Civil Defence & Emergency Management	37.73	38.12	0.39	
Leith Flood Indirect	5,624.82	9,965.40	4,340.58	
Catchment Management - Dunedin	12,974.94	23,938.54	10,963.60	
River & Waterway Management - Dunedin	2,288.12	4,055.20	1,767.08	
General Rate - Dunedin	56,130.93	94,034.64	37,903.71	
Total	77,143.61	132,115.72	54,972.11	

Selected Properties -DCC 3 Waters (Utility)		CV \$417,440,000	CV \$693,200,000	
Rate Description	Actual 2025/26	Proposed 2026/27	Variance	
Targeted Wilding Trees	2.41	2.42	0.01	
Uniform General Charge	73.48	69.71 -	3.77	
Navigational Safety	11.18	11.71	0.53	
Civil Defence & Emergency Management	37.73	38.12	0.39	
Leith Flood Indirect	7,008.82	11,540.28	4,531.46	
Catchment Management - Dunedin	16,167.45	27,721.68	11,554.23	
River & Waterway Management - Dunedin	2,851.12	4,696.06	1,844.94	
General Rate - Dunedin	69,942.07	108,895.44	38,953.37	
Total	96,094.26	152,975.42	56,881.16	

Selected Properties -DCC 3 Waters (Utility)		CV \$178,729,000	CV \$353,100,000	
Rate Description	Actual 2025/26	Proposed 2026/27		Variance
Targeted Wilding Trees	2.41	2.42		0.01
Uniform General Charge	73.48	69.71	-	3.77
Navigational Safety	11.18	11.71		0.53
Civil Defence & Emergency Management	37.73	38.12		0.39
Leith Flood Indirect	3,000.86	5,878.35		2,877.49
Catchment Management - Dunedin	6,922.17	14,120.78		7,198.61
River & Waterway Management - Dunedin	1,220.72	2,392.06		1,171.34
General Rate - Dunedin	29,946.04	55,468.81		25,522.77
Total	41,214.59	77,981.96		36,767.37

Selected Properties - Dunedin Stadium		CV \$249,700,000	CV \$270,450,000	
Rate Description	Actual 2025/26	Proposed 2026/27		Variance
Biosecurity - Dunedin	1,575.67	1,557.51	-	18.16
Targeted Wilding Trees	2.41	2.42		0.01
Uniform General Charge	73.48	69.71	-	3.77
Navigational Safety	11.18	11.71		0.53
Civil Defence & Emergency Management	37.73	38.12		0.39
Leith Flood Direct	105,875.30	116,092.08		10,216.78
Dunedin Transport Class B - Dunedin	65,731.03	68,909.29		3,178.26
Catchment Management - Dunedin	9,670.88	10,815.53		1,144.65
River & Waterway Management - Dunedin	1,705.45	1,832.15		126.70
General Rate - Dunedin	41,837.24	42,485.25		648.01
Total	226,520.37	241,813.76		15,293.39

Selected Properties - Dunedin Airport Main Terminal		CV \$38,680,000	CV \$40,030,000	
Rate Description	Actual 2025/26	Proposed 2026/27		Variance
Biosecurity - Dunedin	310.20	322.40		12.20
Targeted Wilding Trees	2.41	2.42		0.01
Uniform General Charge	73.48	69.71	-	3.77
Navigational Safety	11.18	11.71		0.53
Civil Defence & Emergency Management	37.73	38.12		0.39
Lower Taieri Flood Protection WF1	55,774.17	56,801.76		1,027.59
Leith Flood Indirect	656.82	666.41		9.59
Catchment Management - Dunedin	1,515.12	1,600.83		85.71
River & Waterway Management - Dunedin	267.19	271.18		3.99
West Taieri Drainage - WD1	2,327.99	2,326.53	-	1.46
General Rate - Dunedin	6,554.56	6,288.35	-	266.21
Total	67,530.85	68,399.42		868.57