

# DEVELOPING A WATER QUANTITY PLAN CHANGE FOR THE ARROW CATCHMENT AND WAKATIPU BASIN AQUIFERS

**Consultation session one**

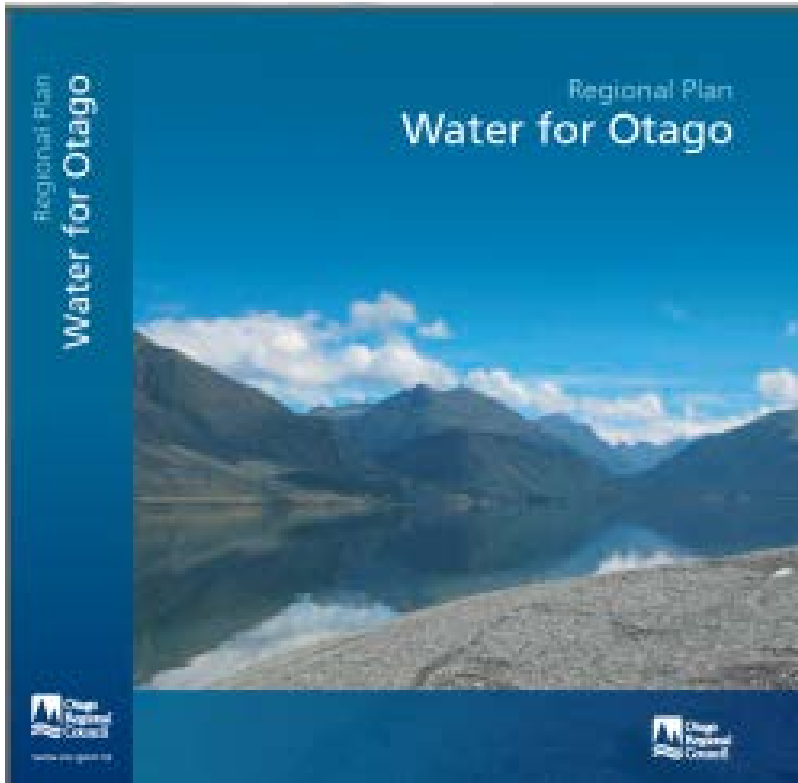
**June 2017**

# About

## **Purpose of presentation is to introduce:**

- Why we are doing a plan change
- The Arrow catchment and Wakatipu Basin aquifers
- What the plan change will do
- The process
- Where we are at so far
- The first stage of consultation – feedback options
- The format of today's session

# Why we are doing a plan change



- Water Plan makes provisions for the setting of minimum flows and allocation limits.
- Resource Management Act 1991
- National Policy Statement for Freshwater Management
- Expiry of deemed permits
- To sustainably manage the catchment and aquifers

# The Arrow catchment

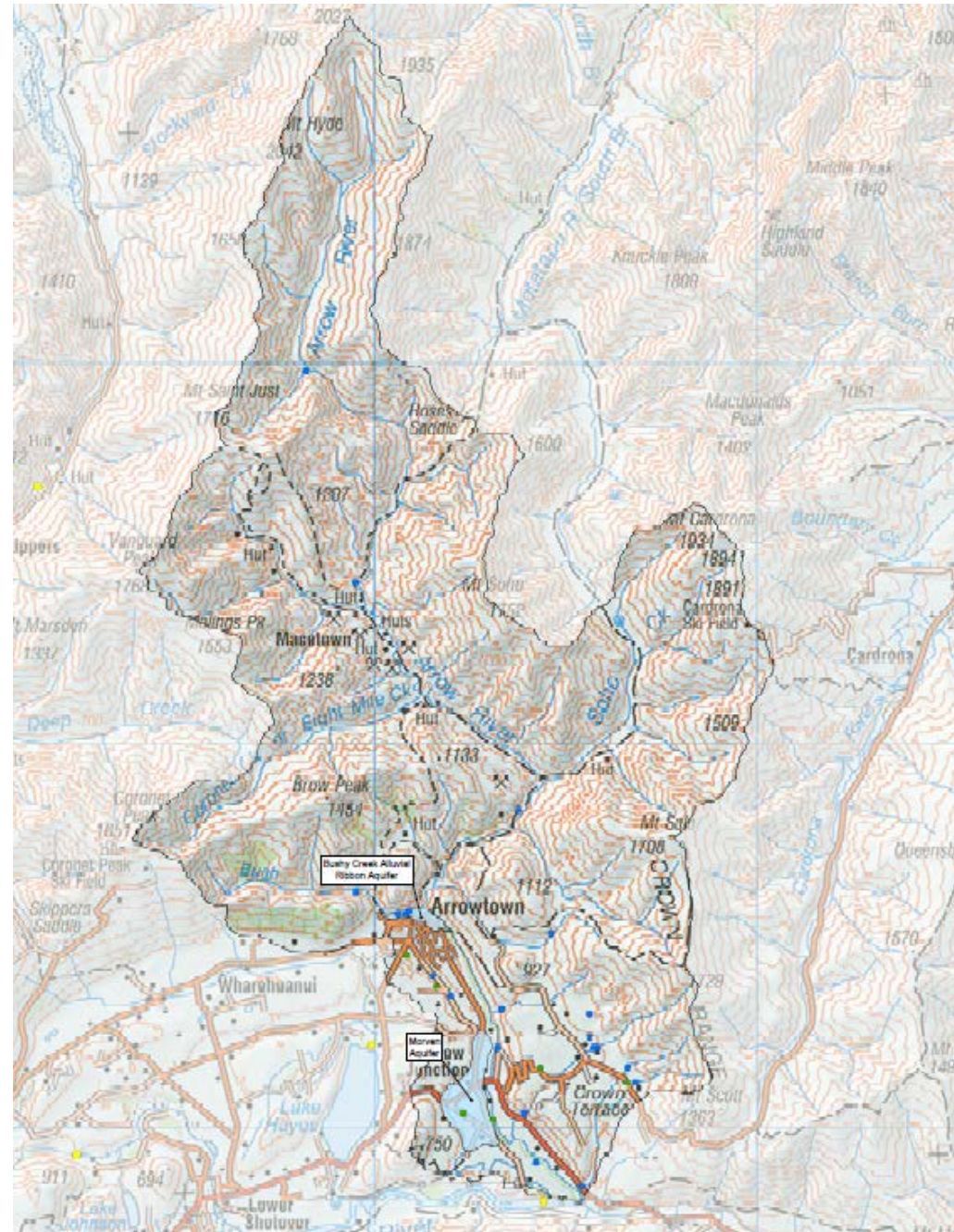
- Stems from the mountain ranges
- North of Arrowtown, south to the Kawarau River
- 236 km<sup>2</sup> in area
- Koaro, rainbow trout and brown trout habitat





# The Arrow catchment

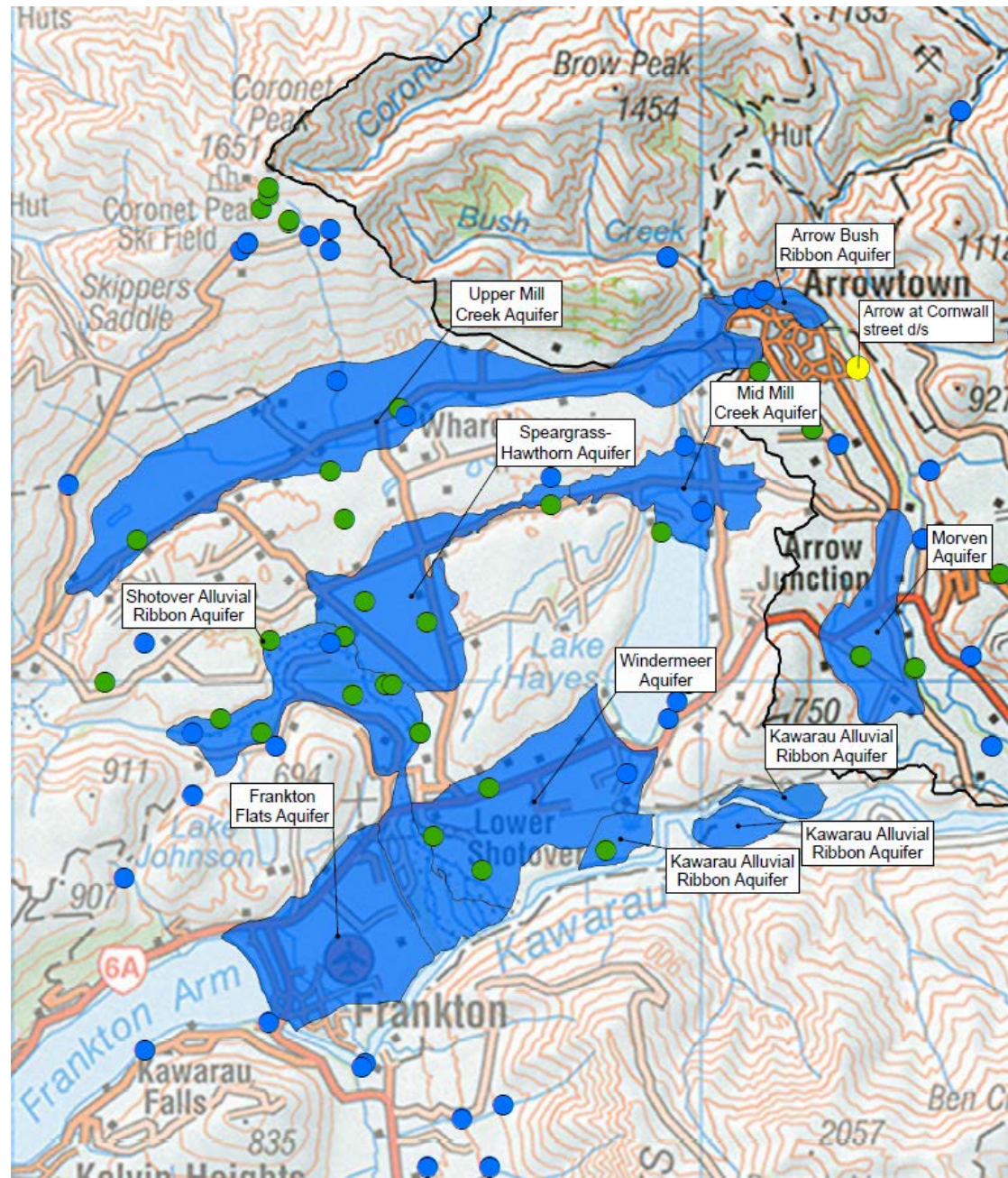
- About 4 times over-allocated
- 15 deemed permits
- Meetings underway with groups for deemed permit renewals
- 22 consents from the river, tributaries and the Arrow-Bush Ribbon Aquifer
- Water used for irrigation, community supply, lifestyle development and tourism
- Water from the Arrow River is used to irrigate the Wakatipu Basin





# Wakatipu Basin aquifers

- 15 groundwater takes
- The aquifers:
  - Arrow-Bush Ribbon
  - Upper Mill Creek
  - Mid Mill Creek
  - Speargrass-Hawthorn
  - Windemeer
  - Morven
  - Frankton Flats
  - Shotover Alluvial Ribbon
  - Kawarau Alluvial Ribbon



# What the plan change will do

- Address over-allocation of water in the Arrow River and tributaries.
- Set minimum flow/s and levels
- Set allocation limits





# What is a minimum flow?

- Restricts when water can be taken from a river under low flow conditions.
- The aim is to protect the environmental values of Otago's rivers, whilst taking account of the community and stakeholder social, cultural, economic and environmental values.





# What is an allocation limit?

- Surface water

- Allocation limits set the total amount of water that consent holders can apply to take in a catchment.
  - Primary allocation – the maximum amount of water that can be taken from the catchment by holders of a ‘primary’ consent.
  - Supplementary allocation – applies when primary allocation is fully- or over-allocated.

- Groundwater

- Maximum allocation limit – is the total volume of water that can be taken annually from an aquifer by consent holders. Can be supported by aquifer restriction levels.

# Plan change requirements

## **To develop this plan change we need to:**

- Understand community water values and preferences
- Undertake research on scientific, environmental, economic, social, and cultural matters

# The process

## Consultation on values

Reports on surface water, instream habitat and groundwater

Identify options for the plan change

Identify social and economic effects of options

## Consultation on options

Identify preferred option and draft the plan change

## Consultation on the draft plan change

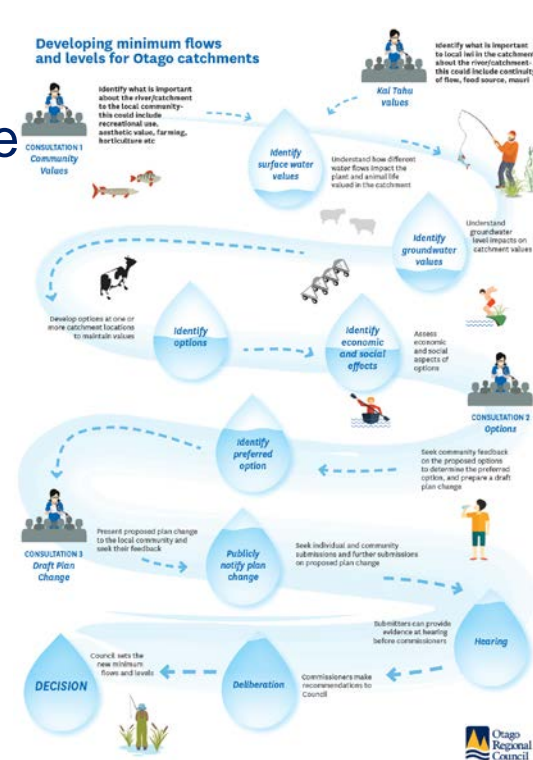
Notify the plan change and seek submissions

Hearing

Commissioner deliberations

Plan change decision

Resolve any appeals

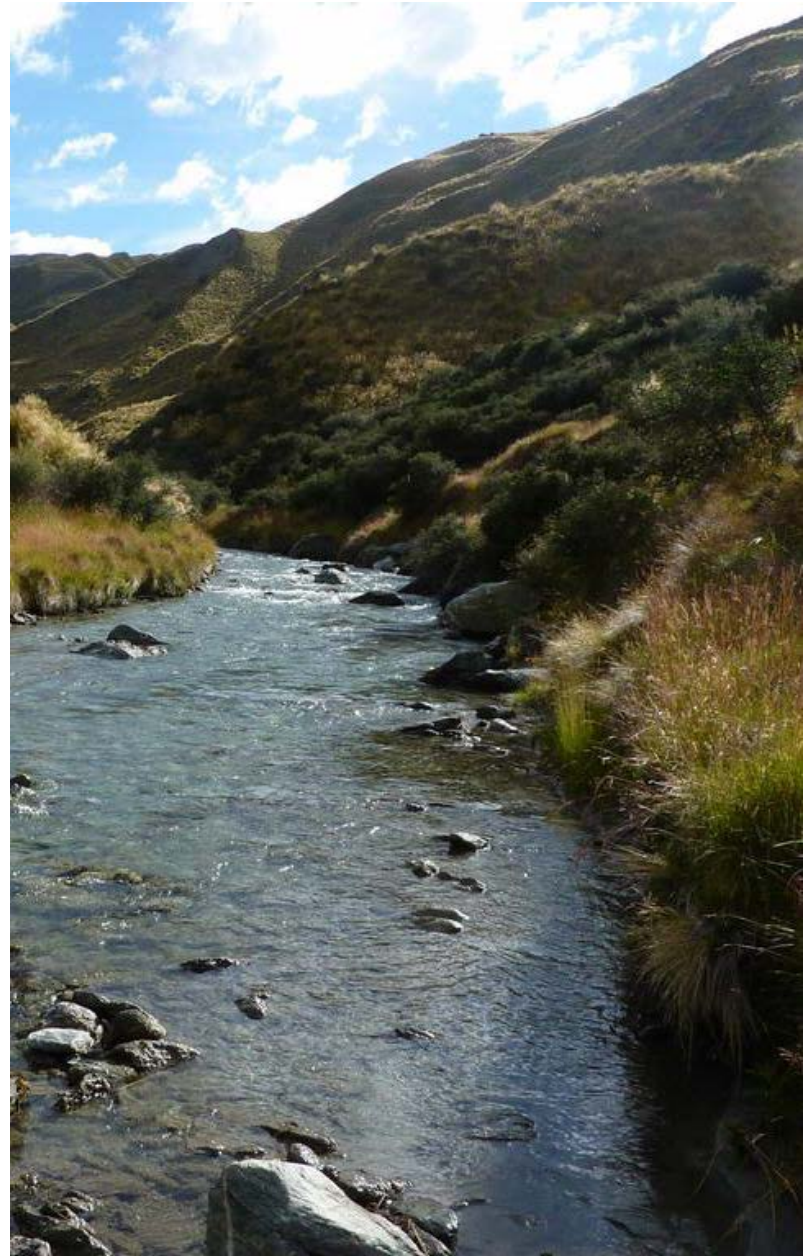




# This first stage of consultation

**Purpose:** To understand what is important to you about the river, its tributaries and the Wakatipu Basin aquifers.

- What do you value?
- What should we consider when setting a minimum flow or allocation limit?
- How and why do you use the river and the aquifers?
- What are your thoughts about the current state of the river or the aquifers?



# The purpose of today's consultation session

- Informal style consultation session
- Opportunity to review the information available
  - Frequently asked questions
  - Maps
  - Interactive on-line maps
  - Dot-mocracy
- Talk with ORC staff
- Provide feedback today or take away with you to provide to us later

# How can you provide feedback?

- Talk to staff today
- Fill in a feedback form and either email or post it back to ORC
- Fill in an on-line feedback form
- Provide comments on the interactive on-line map
- Feedback is required by Wednesday 12 July 2017





## Next steps

- This consultation period closes Wednesday 12 July
- Review and summarise feedback we receive
- Finalise science report on surface water and groundwater
- Identify options for setting minimum flow and water allocation limits
- Undertake social and economic assessments on the options
- Come back to community and stakeholders for consultation in November 2017

# Thank-you

