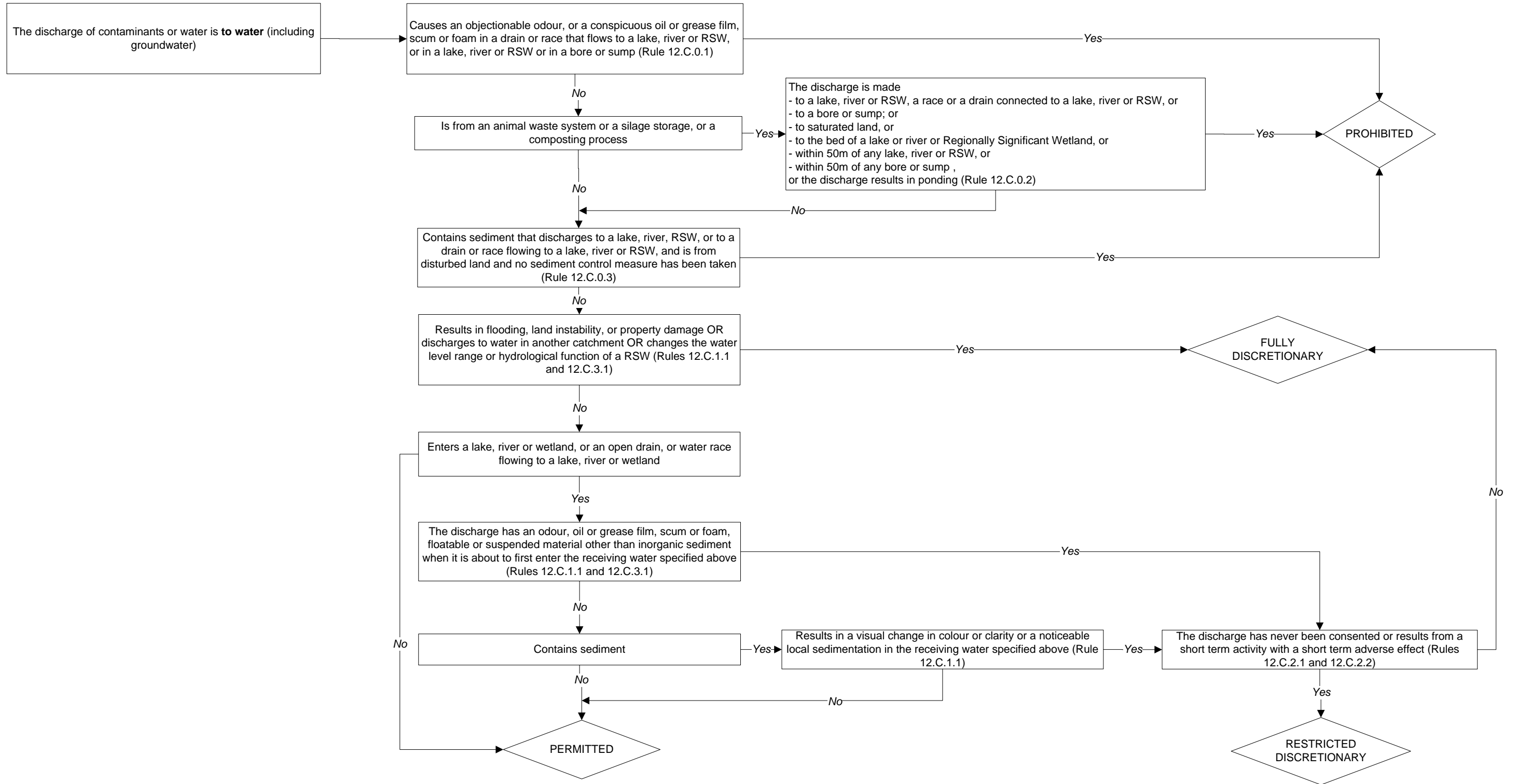


SECTION 12.C – UNTIL 31 MARCH 2020

Discharges of water or any contaminant to water

This flow-chart applies to any discharge of water or any contaminant to water which:
 - is not from a water race that discharges to a lake, river or wetland, or to a race flowing to a lake, river or wetland, and that does not convey irrigation runoff
 - is not from a dam permitted under Rule 13.2.1.3 that discharges to a lake, river or wetland, unless the dam is used for the storage of contaminants (small capture dams).

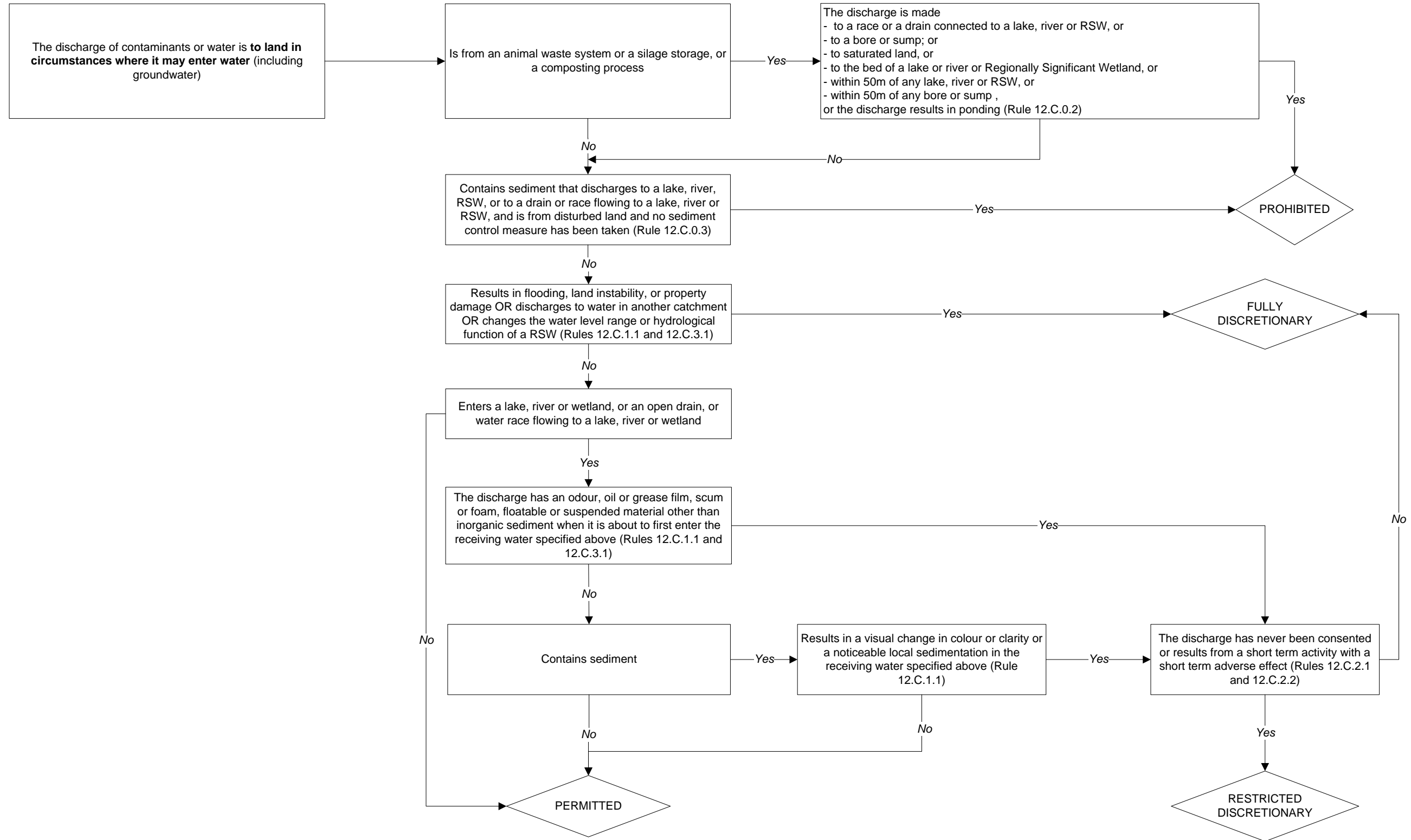


SECTION 12.C – UNTIL 31 MARCH 2020

Discharges of water or any contaminant to land in circumstances where it may enter water

This flow-chart applies to any discharge of water or any contaminant to land in circumstances where the contaminant may enter water.

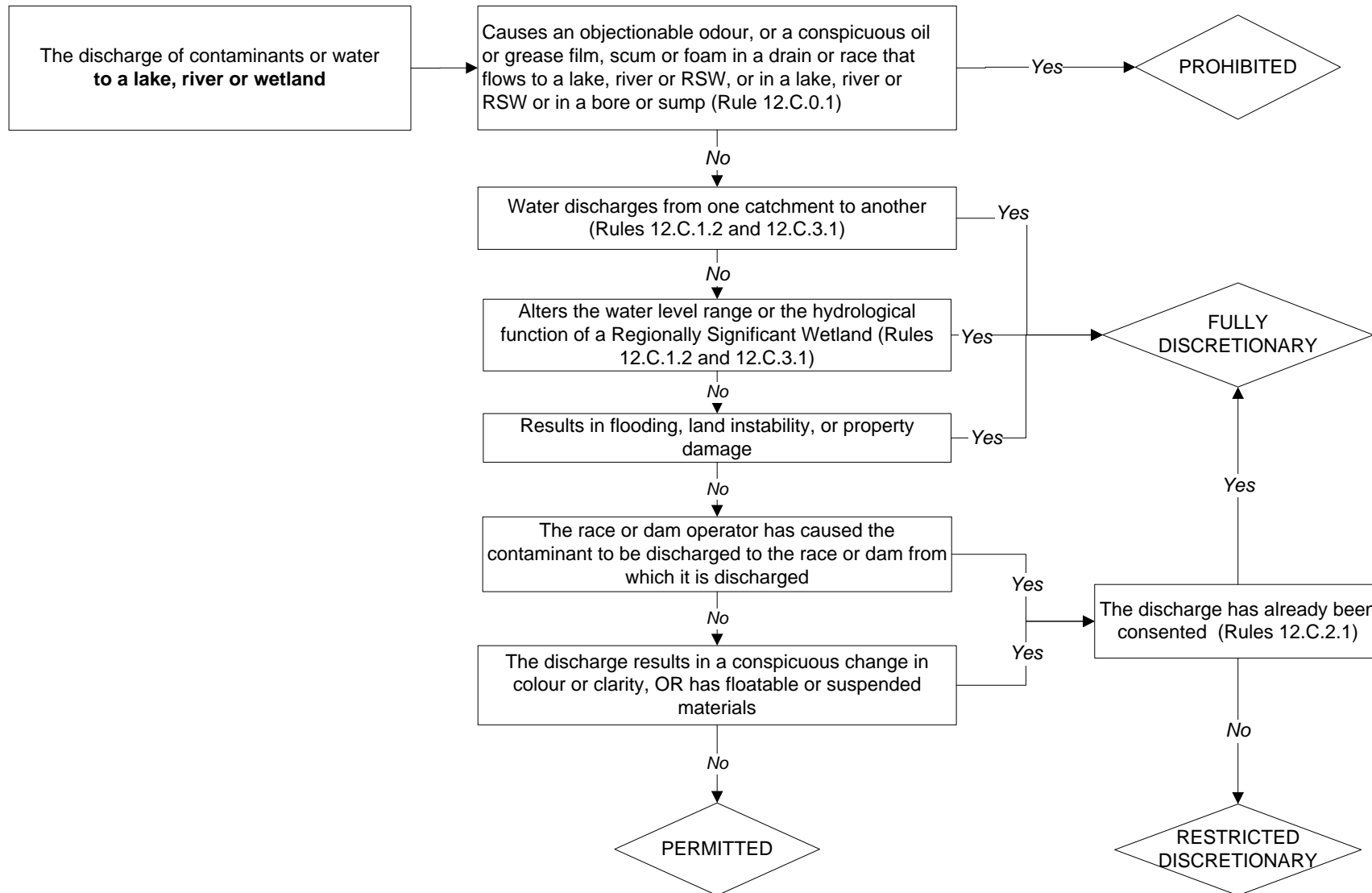
Note that another flow-chart addresses specifically discharges of nitrogen from land to groundwater.



SECTION 12.C – UNTIL 31 MARCH 2020

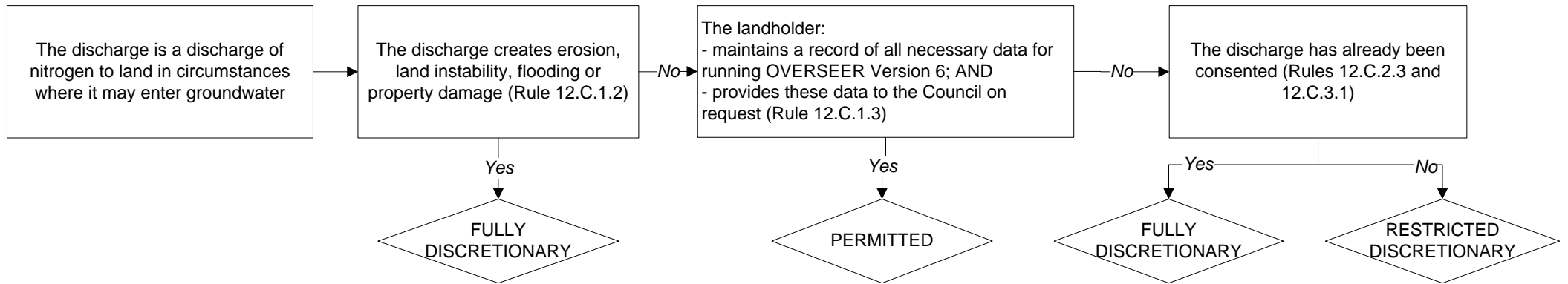
Discharges of water or any contaminant to water from a race or a small dam

This flow chart applies to any discharge of water or any contaminant to a lake, river or wetland, or to a race that flows to a lake, river or wetland, from a water race that does not convey irrigation runoff or from a dam permitted under Rule 13.2.1.3 which is not used for the purpose of the storage of contaminants.



SECTION 12.C – UNTIL 31 MARCH 2020

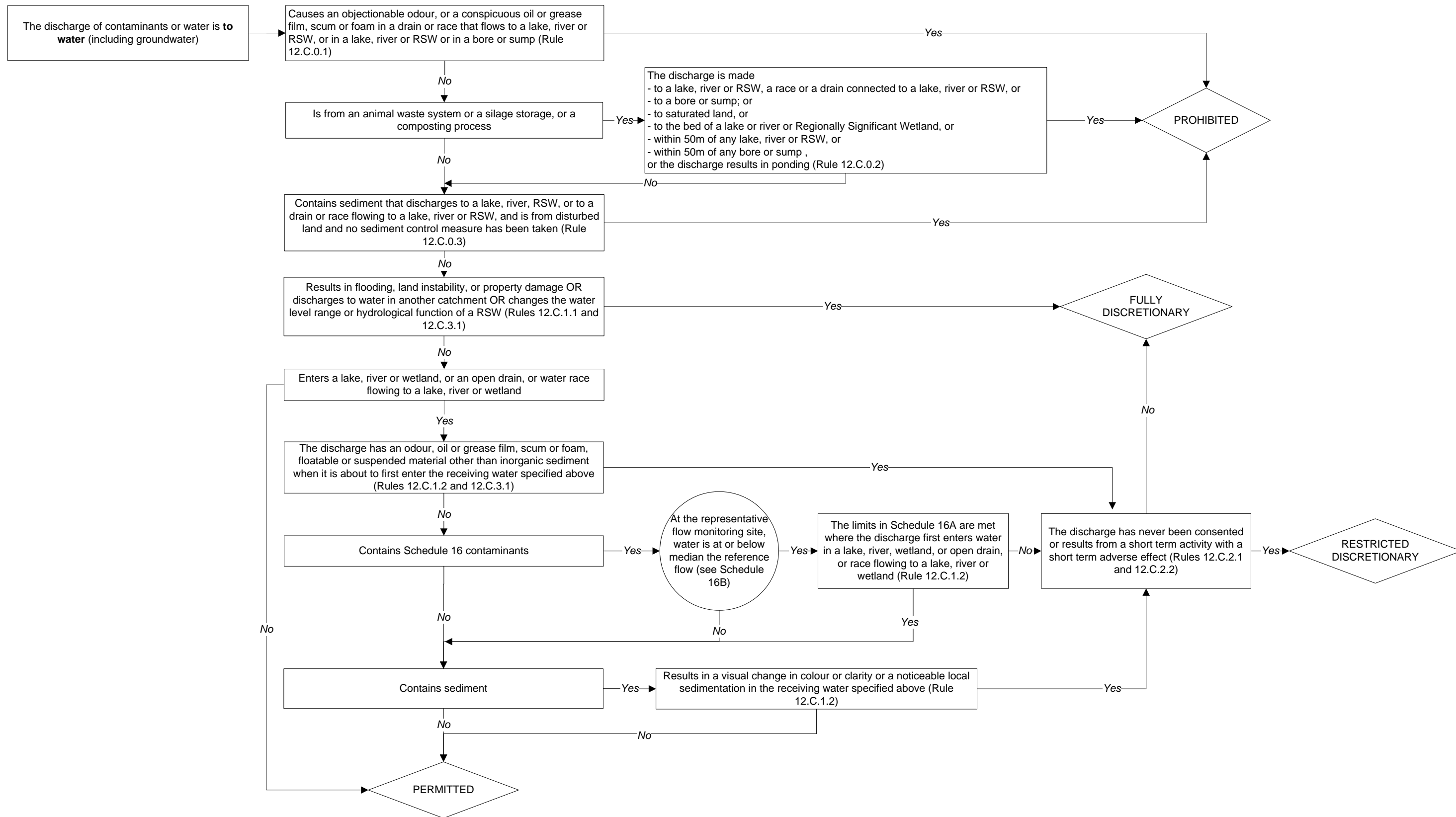
Discharges of nitrogen from land to groundwater



SECTION 12.C – FROM 01 APRIL 2020

Discharges of water or any contaminant to water

This flow-chart applies to any discharge of water or any contaminant to water which:
 - is not from a water race that discharges to a lake, river or wetland, or to a race flowing to a lake, river or wetland, and that does not convey irrigation runoff
 - is not from a dam permitted under Rule 13.2.1.3 that discharges to a lake, river or wetland, unless the dam is used for the storage of contaminants (small capture dams).

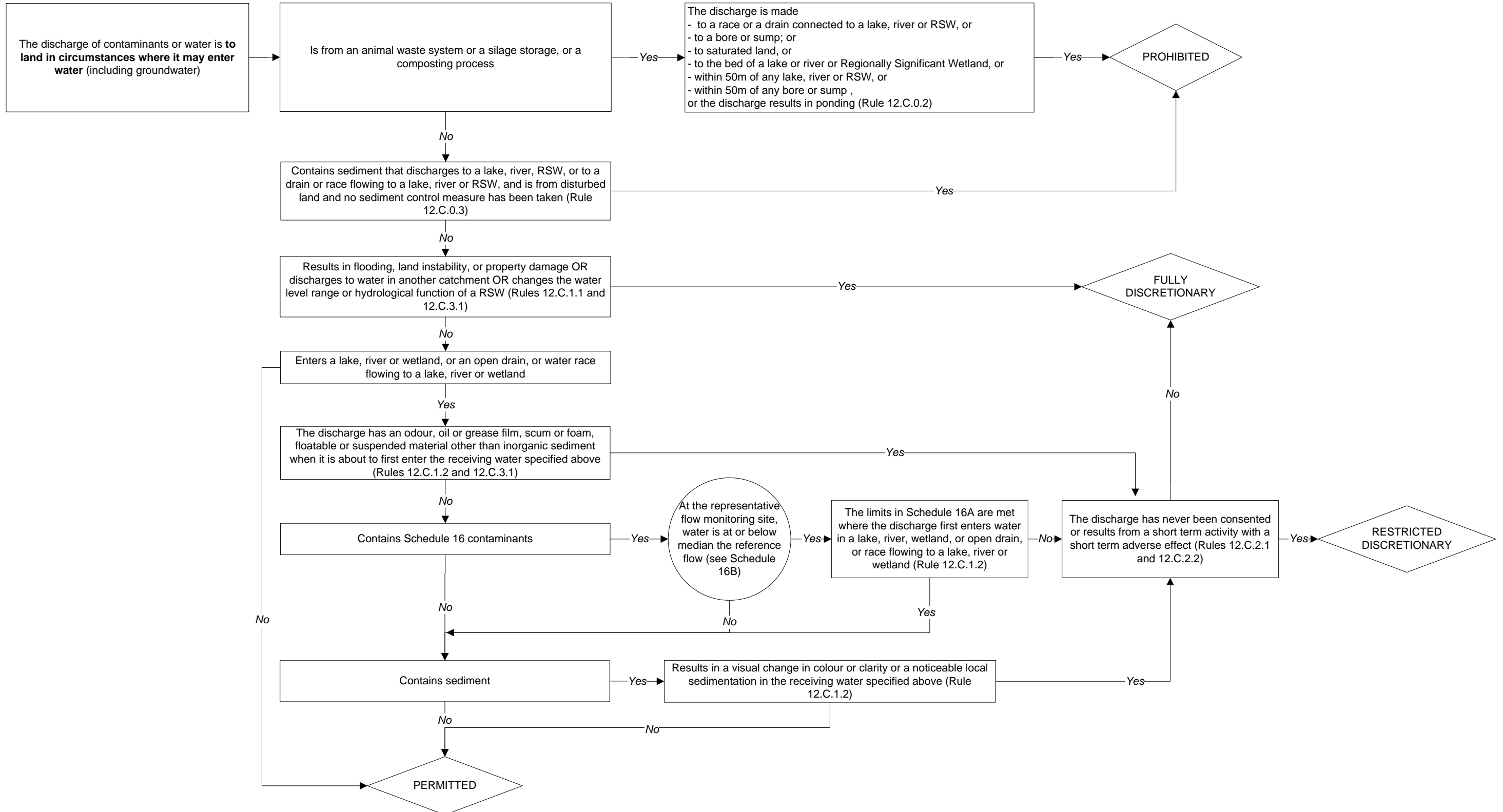


SECTION 12.C – FROM 01 APRIL 2020

Discharges of water or any contaminant to land in circumstances where it may enter water

This flow-chart applies to any discharge of water or any contaminant to land in circumstances where the contaminant may enter water.

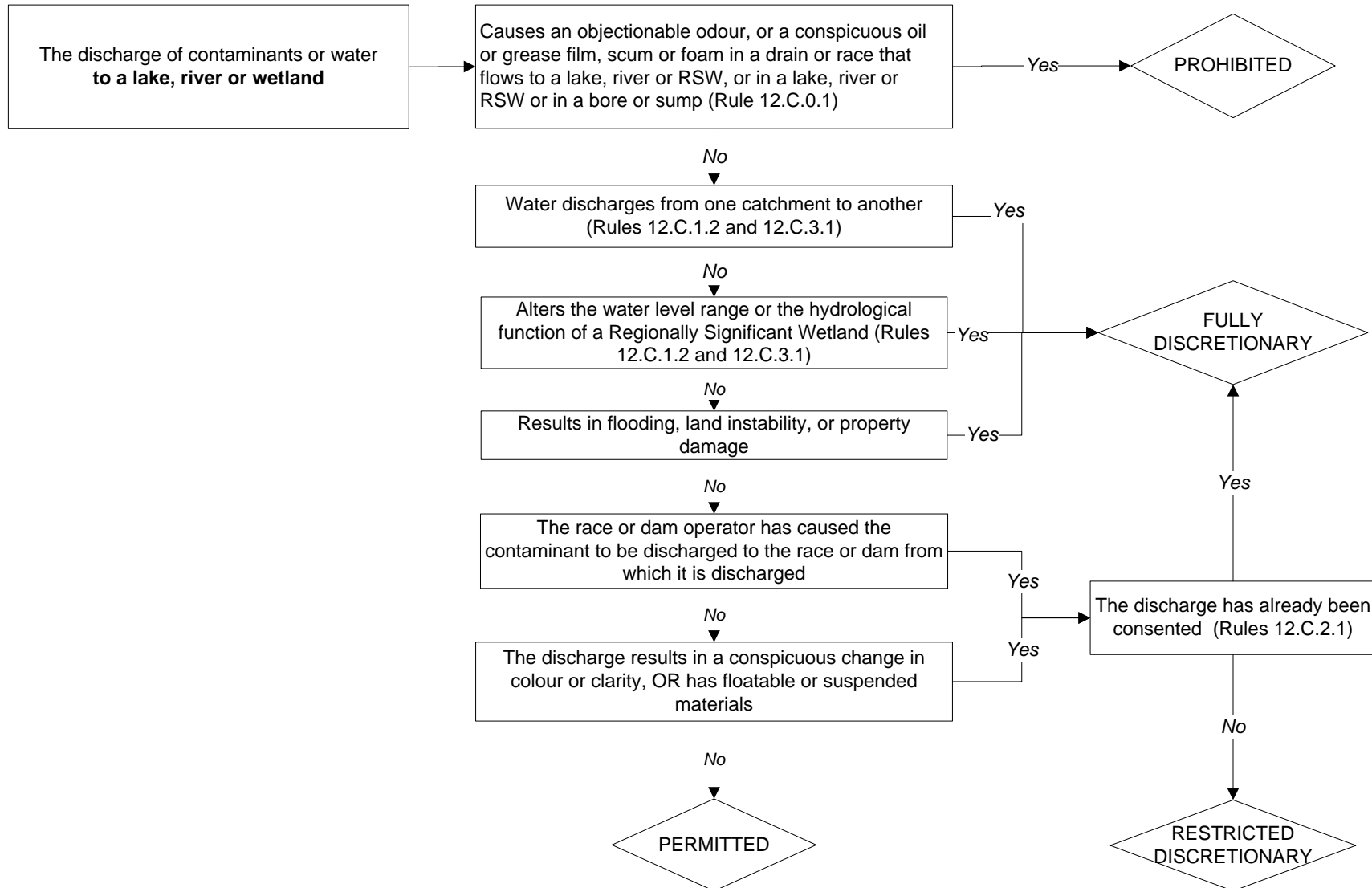
Note that another flow-chart addresses specifically discharges of nitrogen from land to groundwater.



SECTION 12.C – FROM 01 APRIL 2020

Discharges of water or any contaminant to water from a race or a small dam

This flow chart applies to any discharge of water or any contaminant to a lake, river or wetland, or to a race that flows to a lake, river or wetland, from a water race that does not convey irrigation runoff or from a dam permitted under Rule 13.2.1.3 which is not used for the purpose of the storage of contaminants.



SECTION 12.C – FROM 01 APRIL 2020

Discharges of nitrogen from land to groundwater

