



What do you value?

Please list the values that are important to you for the Cardrona River and the Wanaka Basin aquifer. (Where relevant, please include specific location and time of year)

.....
.....
.....
.....
.....
.....

What would you like to see in the future for the Cardrona River and the Wanaka Basin aquifer?

(Where relevant, please include specific location and time of year)

.....
.....
.....
.....
.....
.....

Enter your details below if you want to be kept up-to-date on this project:

Name:
Email or postal address:
.....
.....



ORC is reviewing the *Regional Plan: Water* and wants to build on the great work your community did a few years ago to establish values for the Cardrona River catchment area.

You said you value irrigation and viability of farming, protection of aquatic ecosystems, recreation and aesthetics, and protection of the water resource.

We want to check that these values still reflect what is important to you, and if you have any other values you want to contribute.

You can tell us what you value:

1. **In person** on 28 May 2019 at either 12.30pm or 7pm at the Armstrong Room, Lake Wanaka Centre, 89 Ardmore St, Wanaka. These sessions will start with a short presentation followed by discussion around currently identified and new community values. Please allow 1 to 1.5 hours for these meetings.
2. **Online at** yoursay.orc.govt.nz/cardrona-river until 7 June 2019.
3. Or by filling in and sending the **tear-off-slip** (left) to the Policy Team at ORC by 7 June 2019.



The Cardrona River



www.orc.govt.nz

Private Bag 1954, Dunedin 9054

0800 474 082

Sign up to our monthly newsletter *On-Stream* by emailing water@orc.govt.nz



Get involved

Be part of the discussion about the future of water in the Cardrona and Wanaka Basin area



A new approach to managing water

Otago Regional Council (ORC) has established Freshwater Management Units (FMUs) for Otago, some of which are further divided into rohe (sub-areas). For each FMU or rohe, ORC will work with the community to identify important values and develop objectives and limits for local waterways to maintain and enhance water quantity and quality.

This is a requirement of the *National Policy Statement for Freshwater Management* so that the way water is managed is driven locally, rather than with a 'one-size-fits-all' approach.

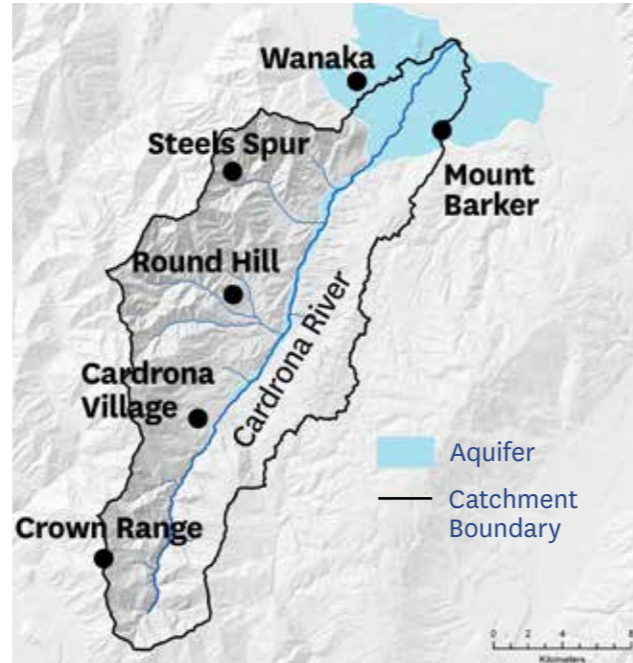
The Cardrona catchment and the Wanaka Basin aquifer form part of the Dunstan rohe. A lot of work has already been done with your community on values and objectives as part of the process to manage water in the river and Basin. This work will fold into the rohe plan, which in turn will become a new chapter of the reviewed *Regional Plan: Water*.

It is important that as many people as possible take part in the discussion about water in your area so that outcomes reflect the needs of the whole community.

We want you to be involved.

This brochure gives you some background information about the Cardrona River and the Wanaka Basin aquifer as well as how you can help set values for the river and its future.

About the Cardrona catchment



The Cardrona catchment extends from its headwaters at Mt Scott in the Crown Range, down the Cardrona Valley to where it meets the Clutha River/Mata-Au.

Wanaka is the largest nearby town, with close to 6,500 residents, and is a popular holiday destination. The area supports a range of cultural, agricultural, tourism and recreational uses, all of which play an important part in the overall character of the community and the region.

Significant native flora and fauna

The upper reaches provide a good habitat for native fish and a range of invertebrates, including the rare Clutha Flathead galaxias, the McCanns skink and

Cromwell Gorge gecko. A variety of birds live in the catchment area, including the California Quail, Chukor Partridge, Paradise Shelducks (putangitangi), Australasian Harrier (kahu), Pipit (pihoihoi), Blackbacked Gull (karoro) and the New Zealand Falcon (karearea), which is a threatened species in gradual decline.

Water quality

Overall, the water quality in the Cardrona River is good. However, in the lower sections of the river, nitrogen levels are elevated due to the intensification of land use.

River flows

The Cardrona River experiences low flows in the lower catchment and, during most summers, sections of it dry up naturally. Flows are generally higher in the spring due to snow melt, and reduce over the summer, although low flows can occur during winter due to freezing conditions in much of the catchment.

Flooding has had a significant impact on the catchment and its community. During the past 35 years, floods have been experienced regularly.

Currently, there are approximately 40 consents to take water from the Cardrona River and its tributaries.

Aquifer

The Wanaka Basin Aquifer is located between Lake Wanaka, the Upper Clutha River/Mata-Au, the Criffel Range and Roy's Peak. This aquifer is responsible for maintaining surface flows in the Lower Cardrona River and Bullock Creek in Wanaka. Water from the aquifer is used for community and commercial water supply as well as irrigation.

