

What do you value?

Please list the values that are important to you for the Arrow River catchment and the Wakatipu Basin aquifers. (Where relevant, please include specific location and time of year)

.....
.....
.....
.....
.....
.....
.....

What would you like to see in the future for the Arrow River catchment and the Wakatipu Basin aquifers? (Where relevant, please include specific location and time of year)

.....
.....
.....
.....
.....
.....
.....

Enter your details below if you would like to be kept up-to-date on this project:

Name:
Email or postal address:



ORC is reviewing the *Regional Plan: Water* and wants to build on the great work your community has done in recent years to establish values for the Arrow River catchment area.

You said you treasure the Arrow's amenity values: the clear water, scenic surrounds and recreational opportunities. You also identified the need for a reliable, good quality supply of water for community and irrigation use, which when taken, does not degrade the river's natural values.

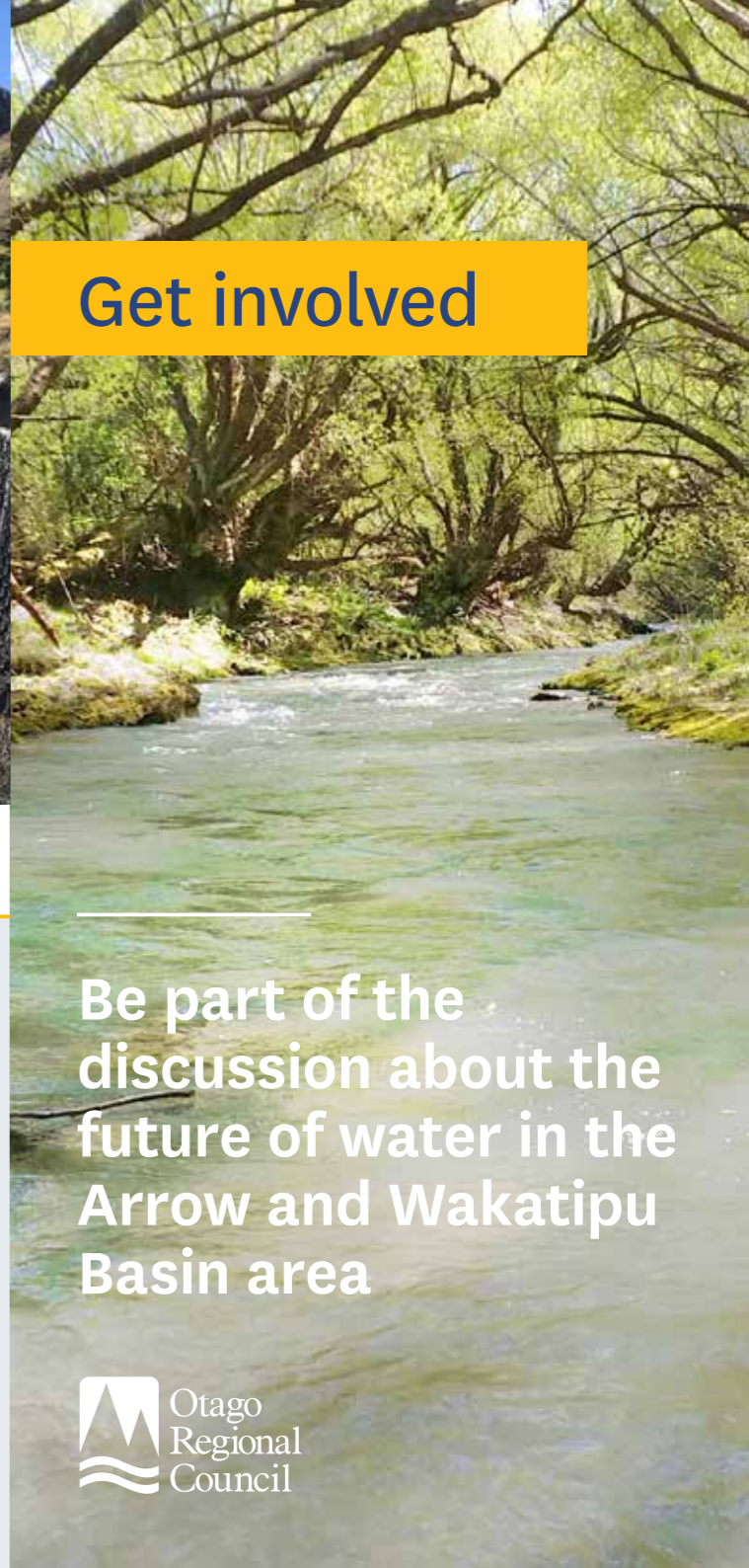
We want to check that these values still reflect what is important to you, and if you have any other values you want to contribute.

You can tell us what you value:

1. **In person** on 27 May 2019 at either 12.30pm or 7pm at the Arrowtown Bowling Club, 6 Hertford St, Arrowtown. These sessions will start with a short presentation followed by discussion around currently identified and new community values. Please allow 1 to 1.5 hours for these meetings.
2. **Online** at yoursay.orc.govt.nz/arrow-river until 7 June 2019.
3. Or by filling in and sending the **tear-off-slip** (left) to the Policy Team at ORC by 7 June 2019.



The Arrow River offers a wide range of recreational opportunities.



Get involved

Be part of the discussion about the future of water in the Arrow and Wakatipu Basin area



www.orc.govt.nz
Private Bag 1954, Dunedin 9054
0800 474 082

Sign up to our monthly newsletter *On-Stream* by emailing water@orc.govt.nz



A new approach to managing water

Otago Regional Council (ORC) has established Freshwater Management Units (FMUs) for Otago, some of which are further divided into rohe (sub-areas). For each FMU or rohe, ORC will work with the community to identify important values and develop objectives and limits for local waterways.

This is a requirement of the *National Policy Statement for Freshwater Management* so that the way water is managed is driven locally, rather than with a 'one-size-fits-all' approach.

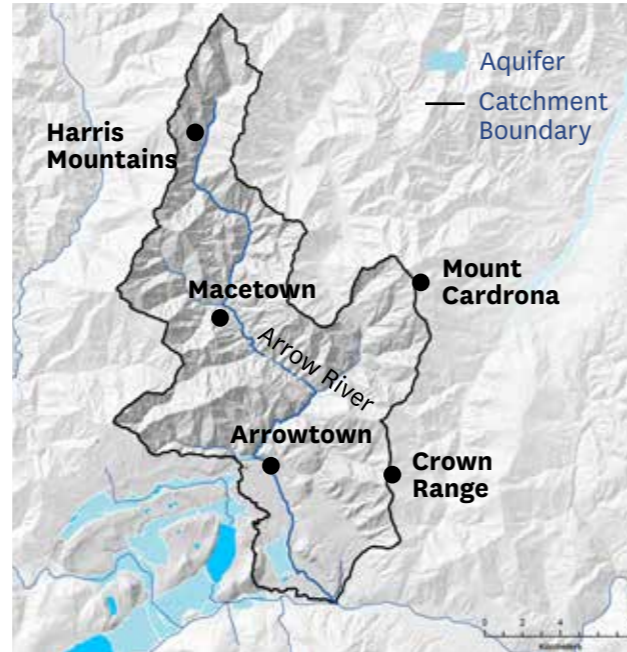
The Arrow River catchment and the Wakatipu Basin's ten aquifers form part of the Dunstan rohe. A lot of work has already been done with your community on values and objectives as part of the process to manage water in the river and Basin. This work will fold into the rohe plan, which in turn will become a chapter of the reviewed *Regional Plan: Water*.

It's important that as many people as possible take part in the discussion about water in your area so that decisions about the Arrow River and the Wakatipu Basin aquifers reflect the needs of the whole community.

We want you to be involved.

This brochure gives you some background information about the catchment as well as how you can get involved in setting values for water in your area and help determine its future.

About the Arrow catchment



The Arrow River passes through steep mountainous terrain, farmland, historical mining areas and the town of Arrowtown, before joining the Kawarau River. Water from the river and its aquifers is used to irrigate pasture and golf courses, and for domestic needs.

Around 2,500 people live in Arrowtown, with a mix of permanent, retirement, lifestyle and holiday houses. There is community support for any growth in Arrowtown to be kept within its current urban boundaries. New settlements are generally being built beyond Arrowtown in the wider Wakatipu Basin, and these also rely on the Arrow River and the Basin's aquifers for drinking water and irrigation.

Significant native flora and fauna

The Arrow River supports a range of life, including invertebrates, fish and birdlife. The river is free of aquatic pest plants and provides important areas for fish spawning and development. Trout are found in the mid-to-lower catchment.



Water quality monitoring

There are two sites on the Arrow currently being monitored monthly for algae, alongside ecological health.

River flows

Arrow River flows are highest from May to September when rainfall is at its highest, and flows in spring are consistently high from snow melt. The lowest recorded flows throughout the catchment have all occurred between January and April.

