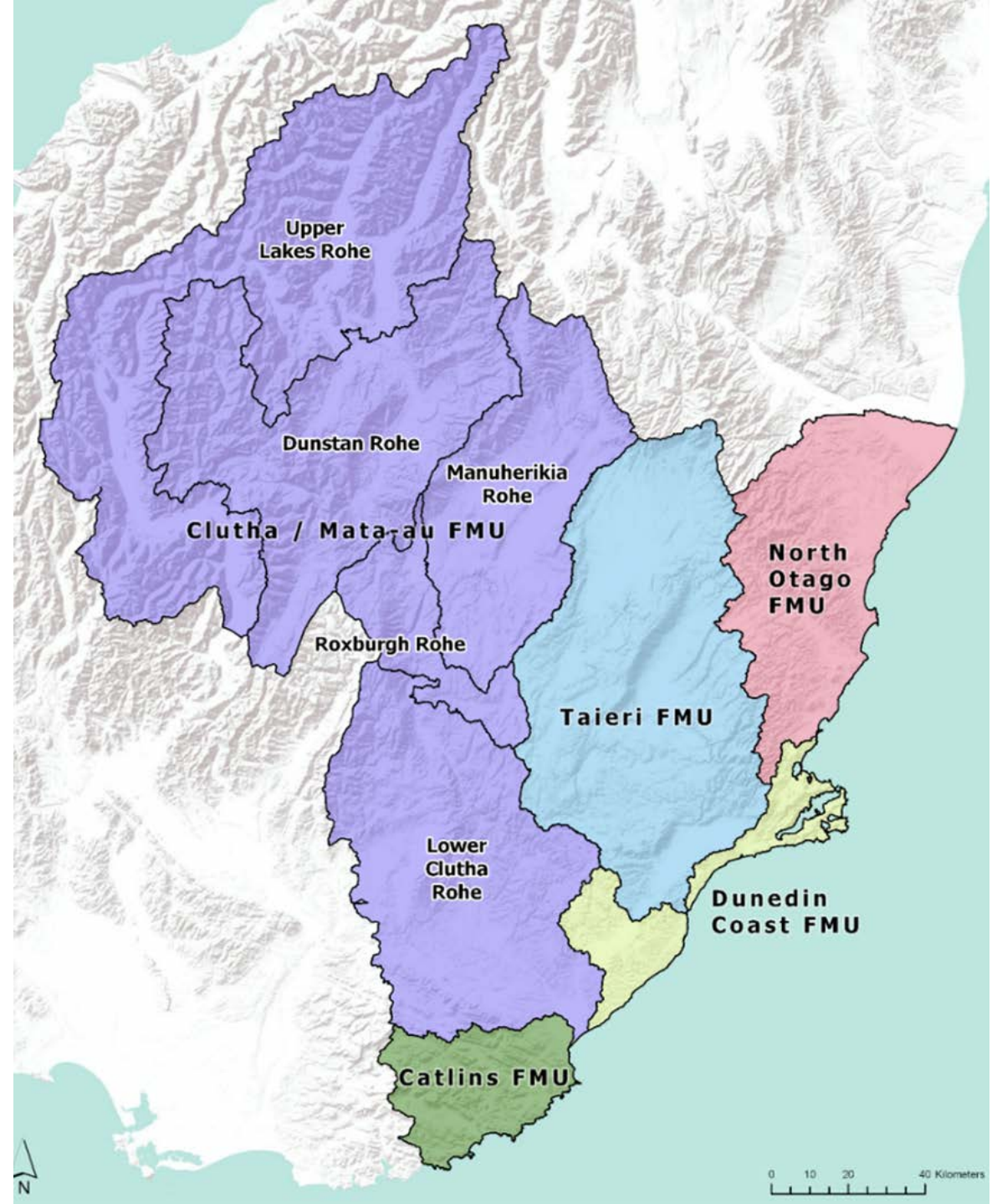


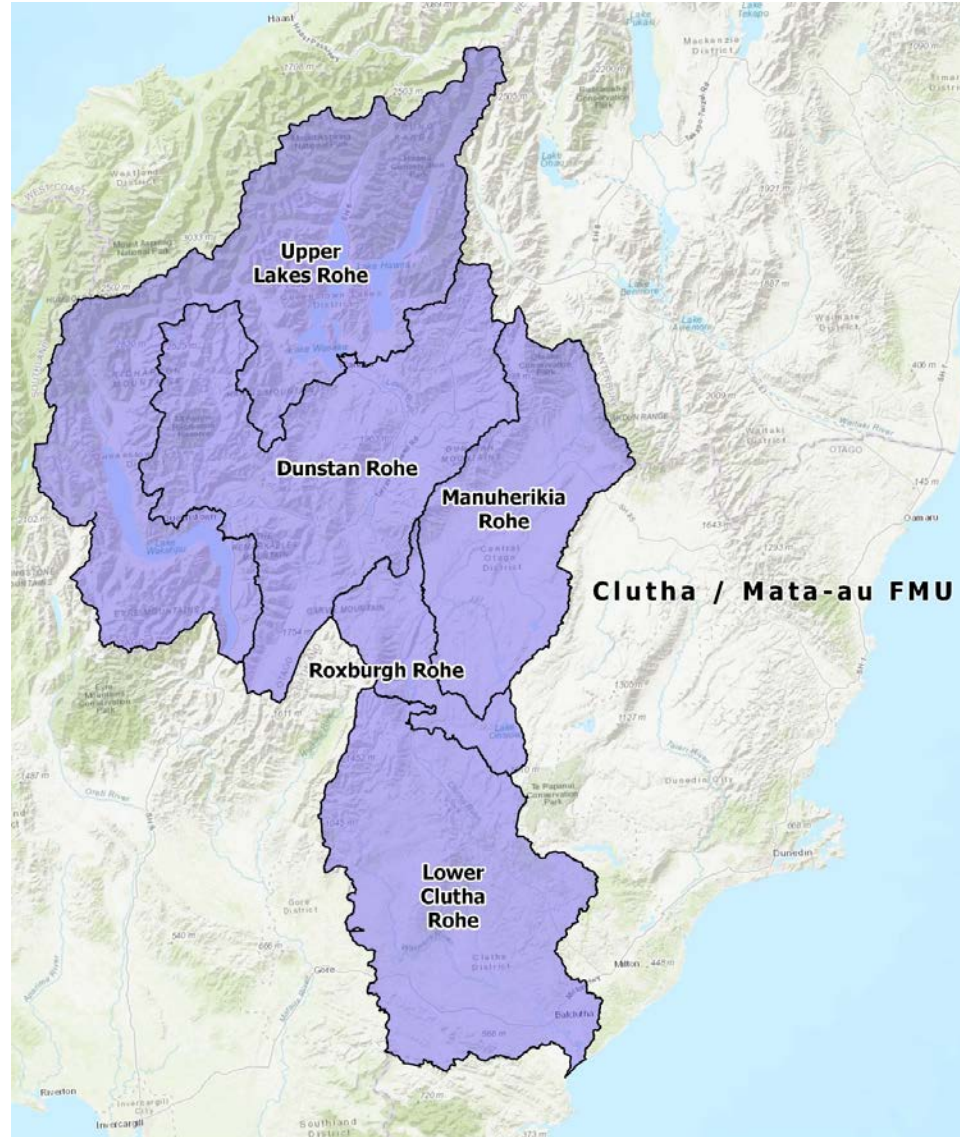
Freshwater Management Units

- **Mata-au FMU**
 - Upper Lakes rohe
 - Dunstan rohe
 - Manuherikia rohe
 - Roxburgh rohe
 - Lower Clutha rohe
- **Taieri FMU**
- **North Otago FMU**
- **Coastal Dunedin FMU**
- **Catlins FMU**



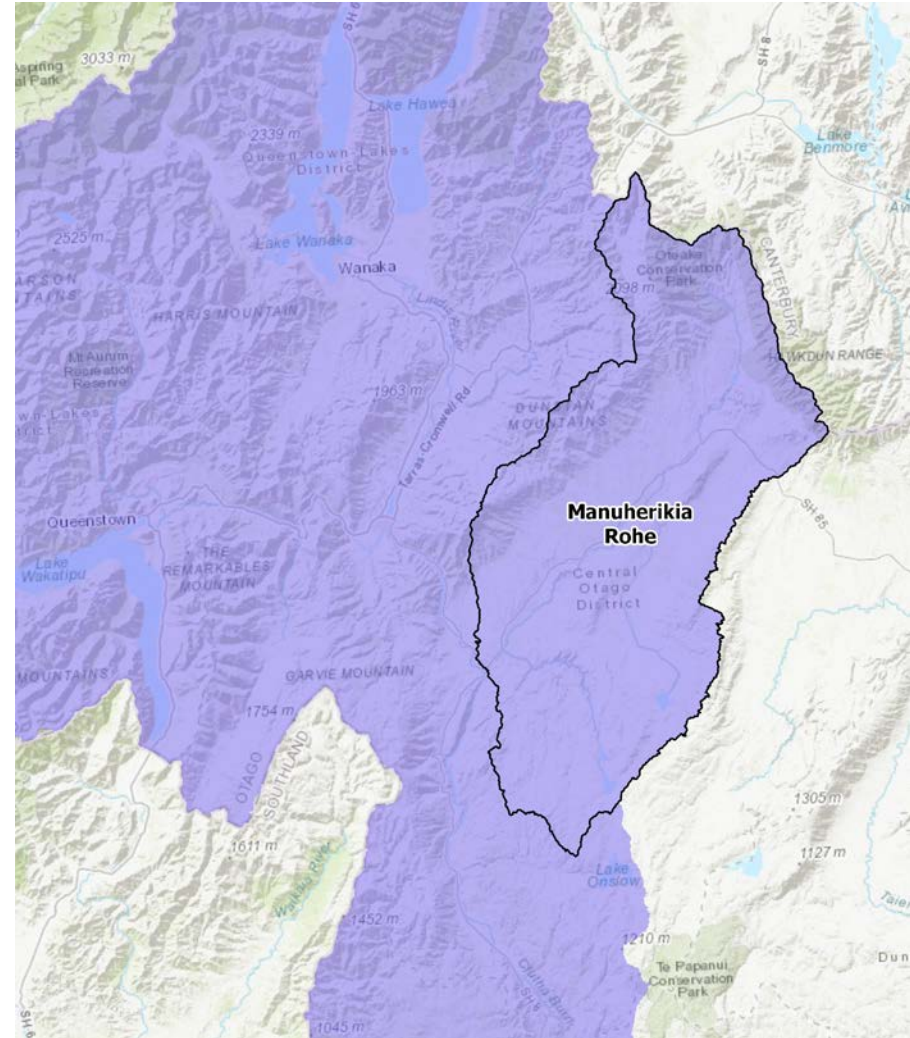
Mata-au FMU

- Provides for ki uta ki tai
- Recognises hydro dams management
- Diverse area that requires sub-units



Manuherekia Rohe

- High reliance on water for economic activity
- Highly values (ecosystem, recreational, social/cultural)
- Highly modified hydrology
- Low flows and degraded water quality in places



Key criteria

Ki uta ki tai (mountains to the sea)

Communities/stakeholder groups

Scale to allow meaningful objectives

Natural catchment hydrology

Connection between water bodies

Land uses / pressures / issues

Relationship between Rohe and FMU

- Recognise connection between Nga Rohe and with Clutha/Mata-Au FMU
- Deal with issues at the appropriate level.
 - FMU chapter: shared issues across all Rohe & cross Rohe boundaries
 - Rohe Chapter: Rohe-specific matters
- Avoid duplication

Risks of a layered FMU framework

- Provisions for Clutha/Mata-Au FMU chapter likely to be more general the provisions for the Manuherekia Rohe chapter (except where they apply directly to the management of the Clutha/Mata-Au)
- NPS (Freshwater and Hydro-electricity Generation) require consideration of impacts on connected water bodies and Contact's Energy's operations
- Hydrological contribution of Manuherekia to Clutha/Mata-Au flows is relatively small.

Final considerations

- FMU framework has been adopted by Otago Regional Council during its April 2019 meeting
- Not part of the Water Plan (currently no legal status)
- FMU framework will be integrated into the regulatory framework through water Plan Review