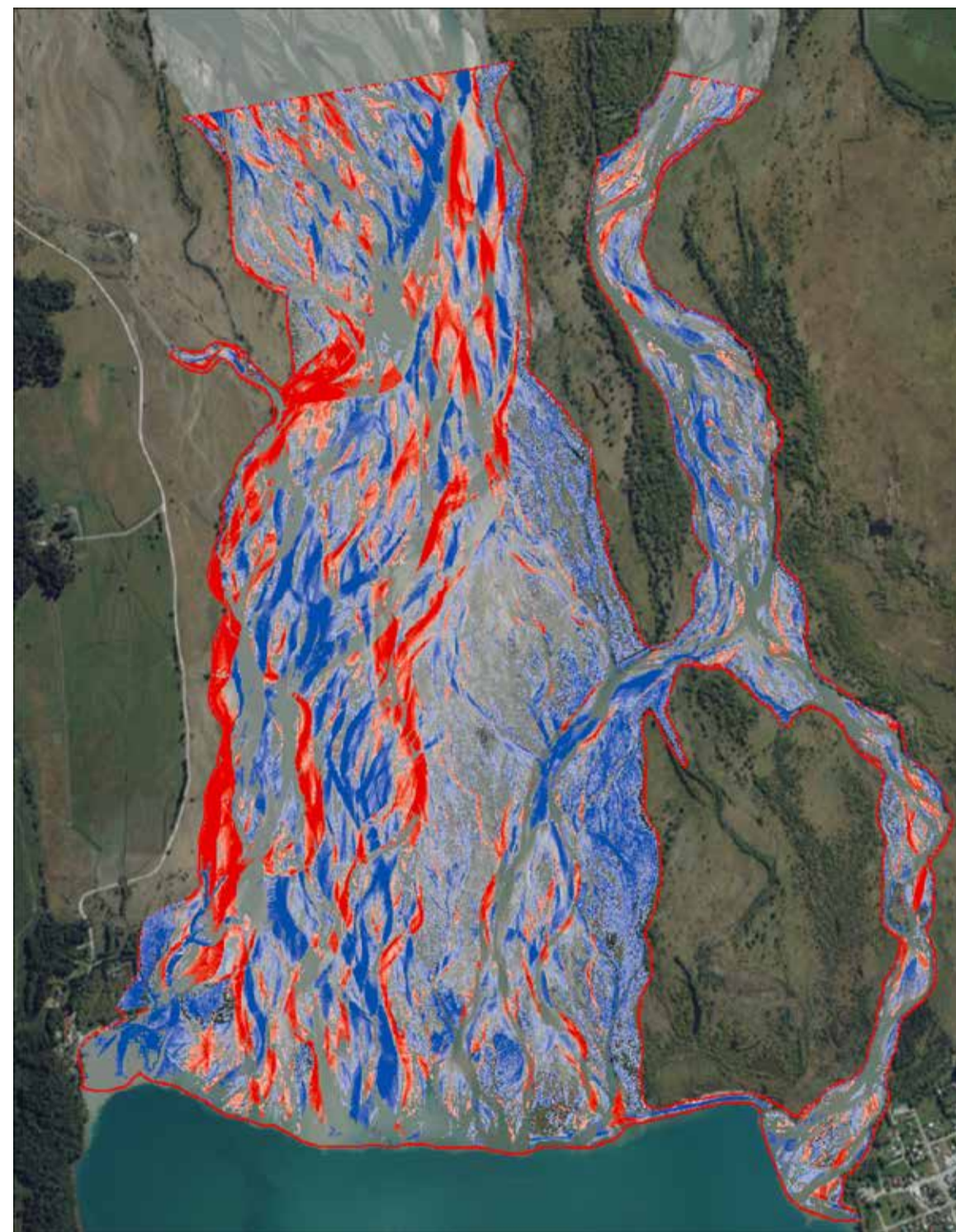


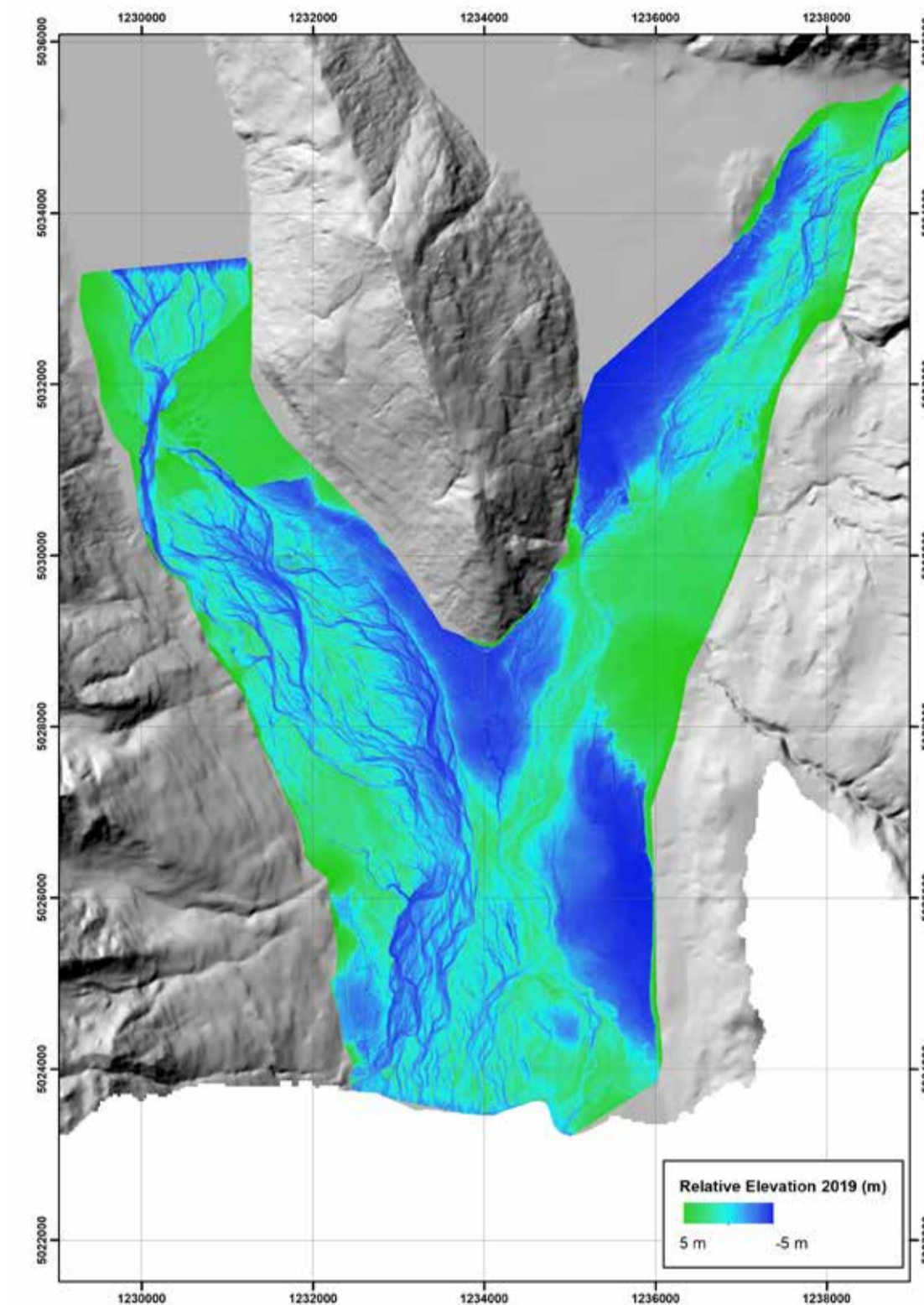
# Supporting Natural Hazards Information Rees River and Glenorchy



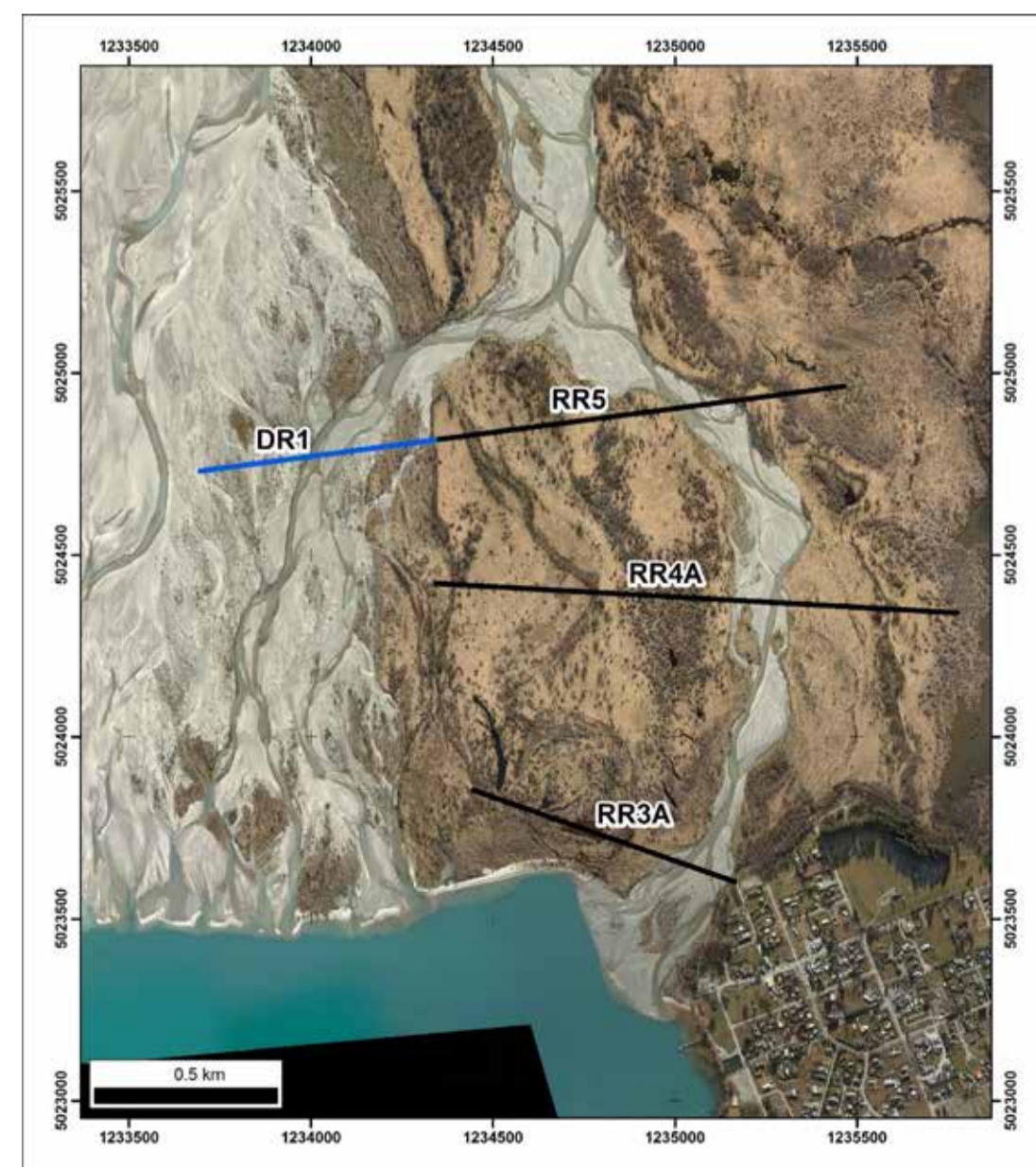
Historical and modelled landscape changes at the Rees Delta



Analysis of differences between 2011 & 2019 LiDAR surveys for the Dart and Rees Rivers, showing widespread riverbed aggradation in the Rees River (blue), as well as erosion (red) along the western banks of the Dart.



Analysis of 2019 LiDAR survey to show floodplain elevations relative to the river level. Showing areas of the valley floor lower (blue) and higher (green) than the average river bed level.



Lower Rees River cross section surveys, showing a gradual rise in river bed levels over about the last 10 years.



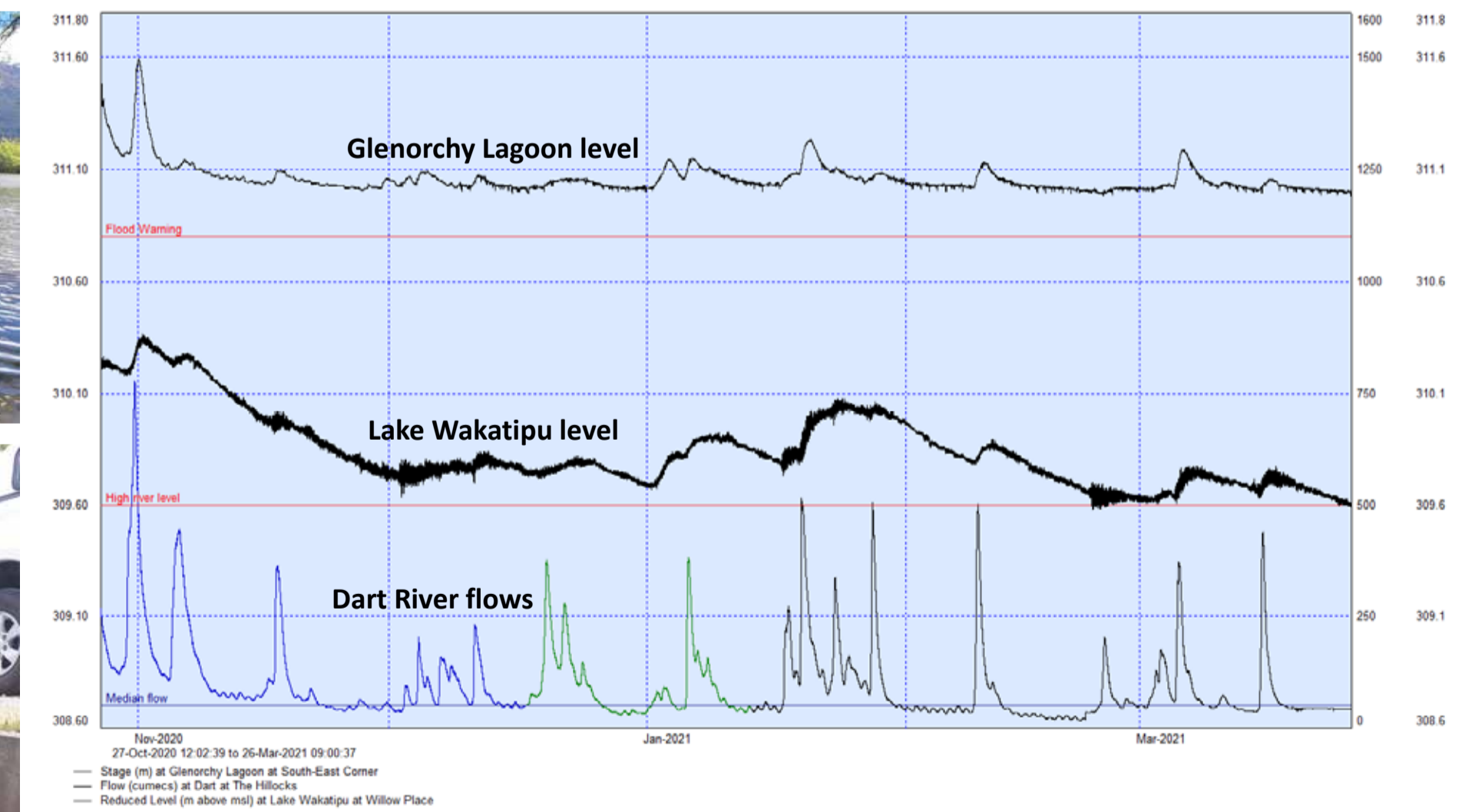
Overview of the Glenorchy area, showing the township located between the Rees River and Delta to the north, and Buckler Burn to the south.



Significant flooding events in Glenorchy: December 1999 (above), and February 2020 (right) [RH photo above credit to Luke Hunter]



New water level monitors in place at the Glenorchy Lagoon (right), and at the Glenorchy boat ramp (left).



Comparison plot of monitoring data for the Dart-Rees area, showing relationships between river flows, lagoon levels and the lake level.