

Oteake skink

Oligosoma aff. inconspicuum “North Otago”



Otago
Regional
Council



Conservation status

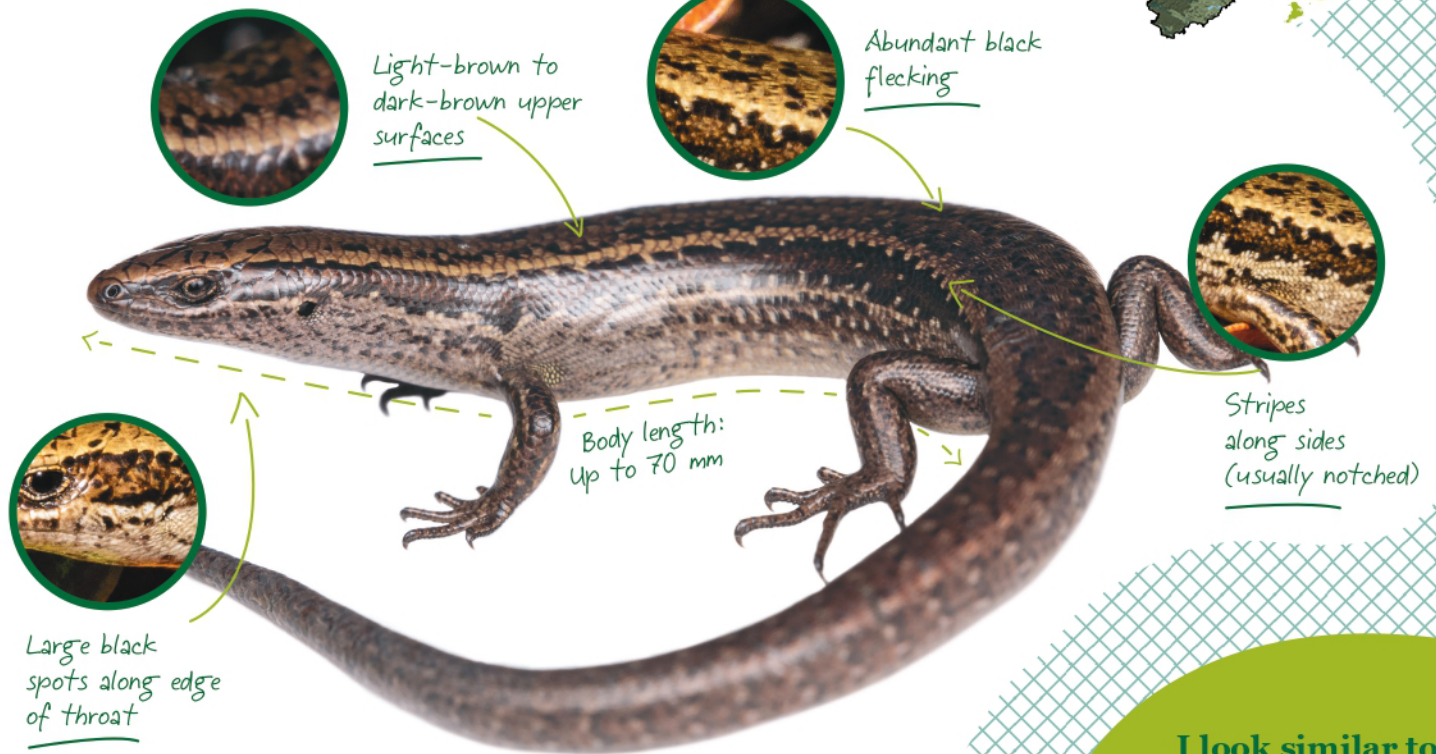
Regional | Threatened: Vulnerable
National | Threatened: Vulnerable



Main threats

Habitat change (e.g. fire)
Introduced mammalian predators

Identify me by my...



I inhabit...

Rocky areas (e.g. boulderfields and bluffs) with lots of woody vegetation (especially snow tōtara and *Coprosma*) and tussock grassland with abundant *Dracophyllum* shrubs.



I eat...

Berries and insects



Tussock skink



McCann's skink