



Large-scale Environmental Fund



Otago
Regional
Council

Background

- \$2 million per year allocated through the Long-Term Plan to fund 'large-scale environmental projects' via an Otago-wide rate from July 2025.
- Series of workshops and papers to the previous Council have been held.
- Funding in Long Term Plan but considered again through Annual Plan process 2025.
 - Funded via reserves for 2025/26.

➤ In April 2025 Council endorsed:

- Principles of the fund being utilised to define ‘large scale’
 - Intergenerational impact
 - ORC has leadership role of system but local leadership and action driven by communities
 - Alignment to organisational strategy and strategic direction

➤ In June 2025 Council endorsed:

- A prioritised Funding Model through Registration of Interest and Request For Proposal or Direct Engagement aligned where appropriate to Catchment Action Plan implementation
- Eligibility criteria

Move to Targeted Investment Approach

- To support Council's priority outcomes (to be defined by Councillors)
- Direct approach to groups once priorities identified
- Groups could come to us to advise how they could help to deliver priorities once these are public
- Consideration will be needed around communication with the public



Three Stages

1. Council priorities identified
2. Staff identify groups who have capability and capacity to deliver or community groups approach ORC to advise how they can assist us to achieve priority actions
 - a. Engage and inform groups of the priorities and funding available
 - b. Request and assess proposals from groups
 - c. Council approval of groups selected
 - d. Administer funding agreements
3. Ensure accountability through reporting and monitoring



Otago
Regional
Council

Stocktake of Community Groups

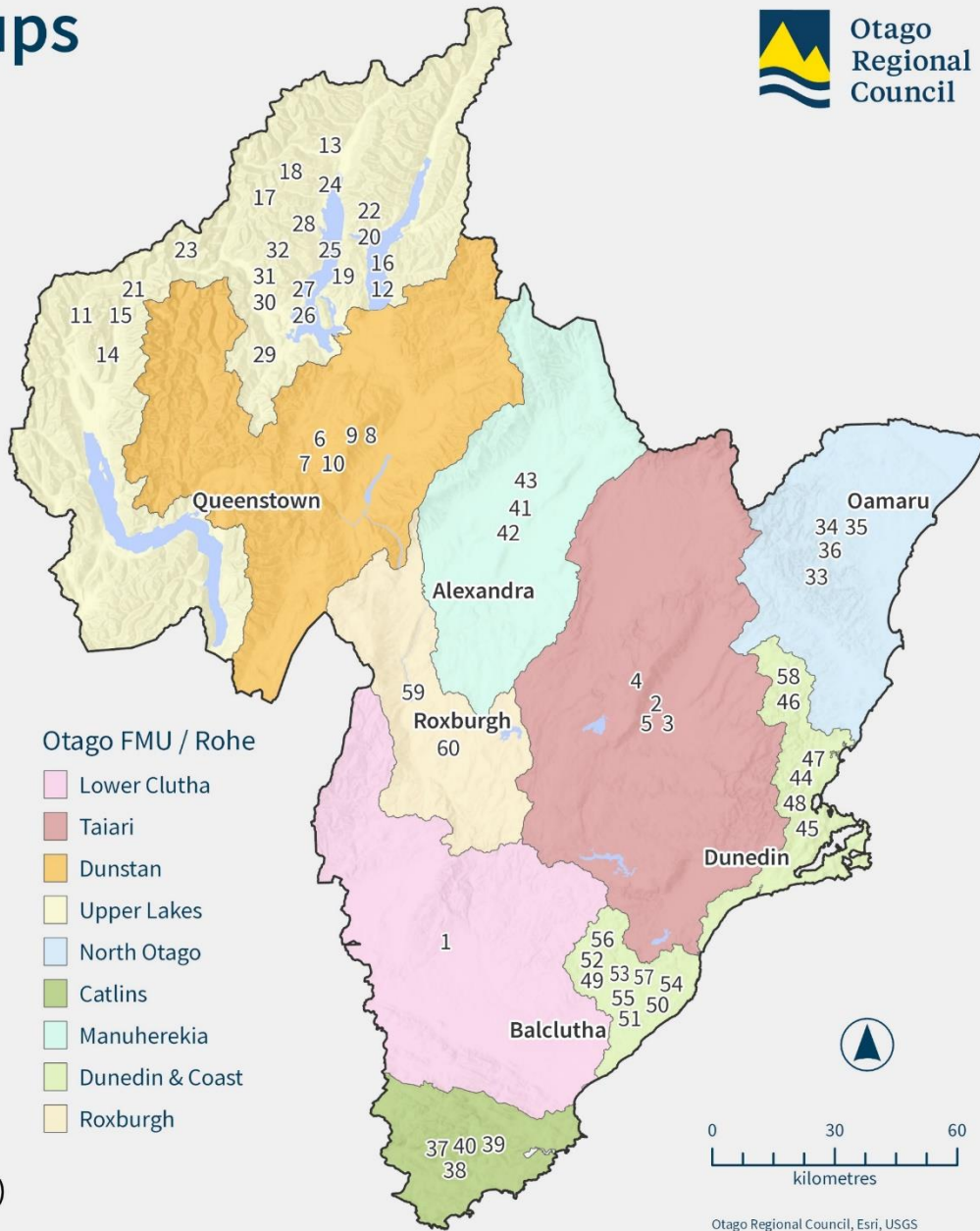
Community Environmental Groups



Group	ID	Group	ID
Pomahaka Water Care Group	1	Routeburn-Dart Wildlife Trust	31
Ida Valley Catchment Group	2	Forest and Bird - Central Otago Lakes	32
Mid Taieri Wai	3	NOSLAM	33
Upper Taieri Wai	4	East Otago Catchment Group	34
Tiaki Maniototo	5	Hikararoa / Mount Watkin Conservation Group	35
Mokihi Trust	6	Te Rūnanga o Moeraki	36
Central Otago Wilding Conifer Control Group	7	Catlins Coast Incorporated	37
Lake Dunstan Charitable Trust	8	Catlins Integrated Catchment Group	38
Lowburn Catchment Group	9	Hokonui Rūnanga	39
Lindis Catchment Group	10	Otago South River Care	40
Southern Lakes Sanctuary	11	Waiora Manuherekia	41
WAI Wanaka	12	Manuherekia Catchment Group	42
Friends of Lake Hayes	13	Haehaeata Natural Heritage Trust	43
Mana Tahuna Charitable Trust	14	The Halo Project	44
Te Tapu o Tāne	15	Kati Huirapa Runaka ki Puketeraki	45
Aspiring Biodiversity Trust	16	Yellow-eyed Penguin Trust	46
Whakatipu Reforestation Trust	17	Tha Landscape Connections Trust	47
Whakatipu Wildlife Trust	18	Otokia Creek And Marsh Habitat Trust	48
Whakatipu Wilding Control Group	19	EcOtago	49
Upper Clutha Wilding Tree Group	20	Dunedin Environment Centre	50
Wanaka Catchment Group	21	Predator Free Dunedin	51
Predator Free Wanaka	22	Aroha Kaikorai Valley	52
Hawea Catchment Group	23	Orokonui Ecosanctuary	53
Te Kākano Aotearoa Trust	24	Ōtākou Runaka	54
Arrowtown Choppers	25	Otago Peninsula Biodiversity Trust	55
Cardrona Catchment Group	26	Save the Otago Peninsula Society Incorporated	56
Bremner Bay Catchment Group	27	Herewaka Harbour Cone Management Trust	57
Friends of Bullock Creek	28	Seek Weeds and Terminate (SWAT)	58
Glenorchy Catchment Group	29	Mokomoko Dryland Sanctuary	59
Matukituki Charitable Trust	30	Teviot Water Care Group	60

Groups working across Otago (additional groups may have been omitted in error)

QEII National Trust	Royal Forest and Bird Protection Society of NZ
NZ Landcare Trust	The Wildlife Hospital Trust



Next Steps

Paper to be presented to Council to seek endorsement of:

- Administration process
- Fund timeline
- Communications and engagement plan



Questions & Feedback