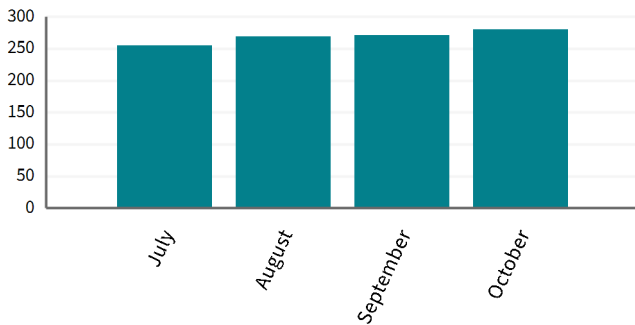


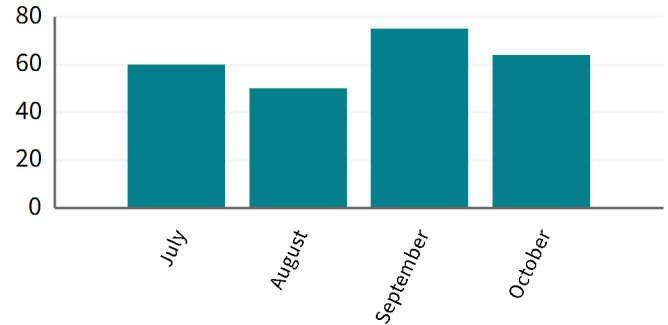
CONSENTS

Level of Service	Target	Current Result
Percentage of resource consent applications processed in accordance with Resource Management Act 1991 legislative timeframes	98%	100%
Percentage of public inquiries for consent information completed within 7 working days	99.5%	96.2%

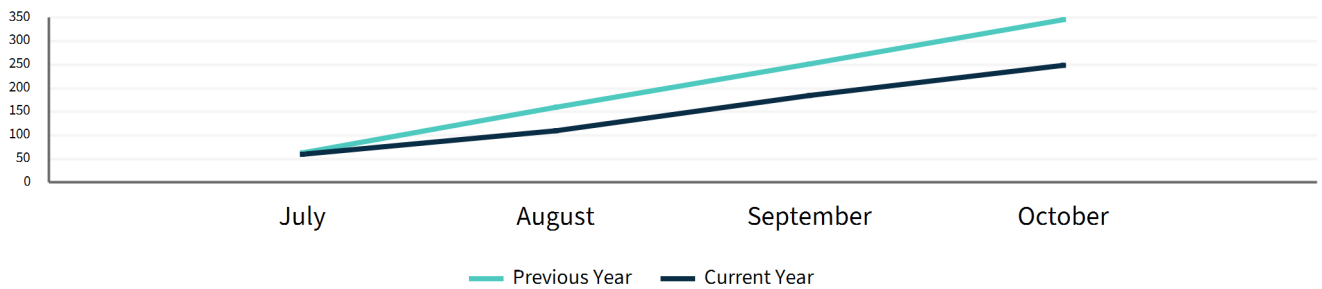
Applications in Progress per Month



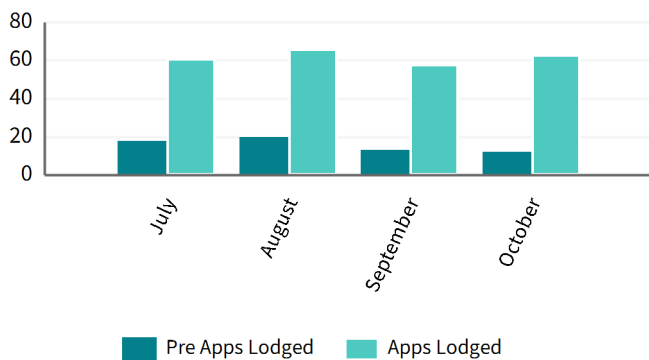
Consents Issued per Month



Consents Issued Cumulative Total



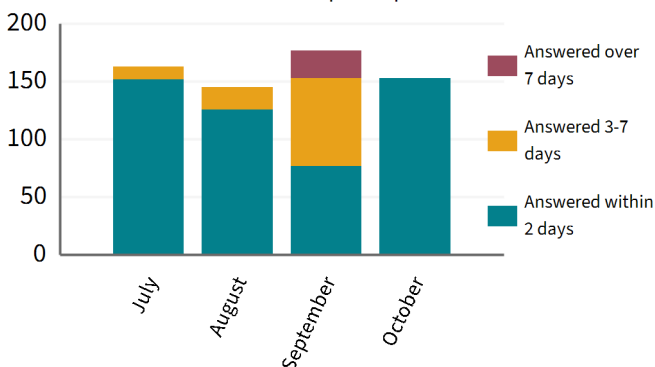
Pre-Applications and Applications Received



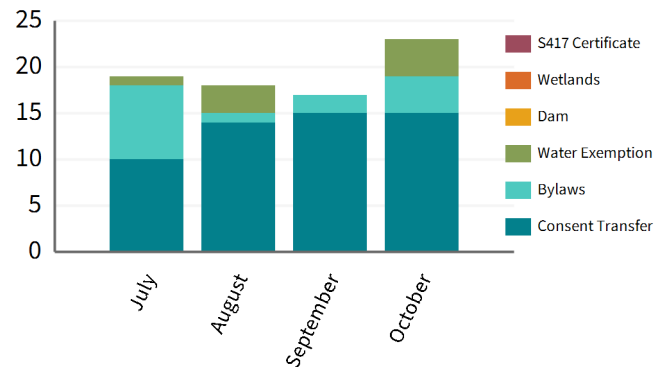
Notified Applications per Month



Consent Public Enquiries per Month



Other Applications per Month



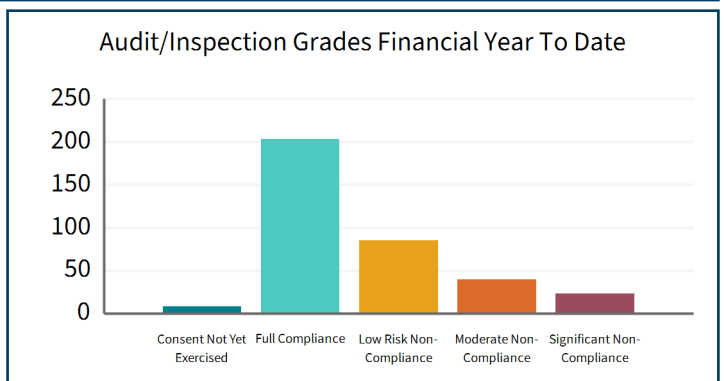
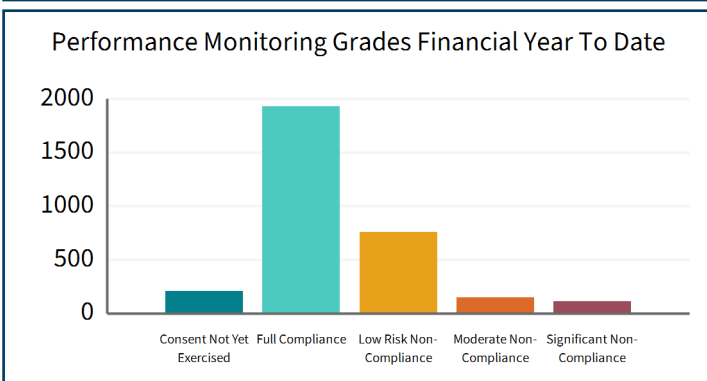
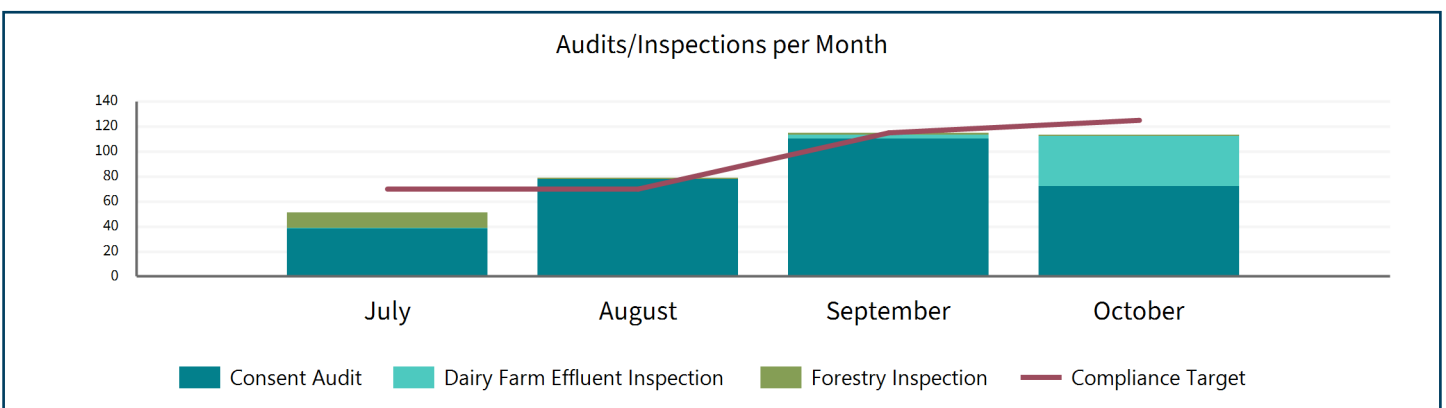
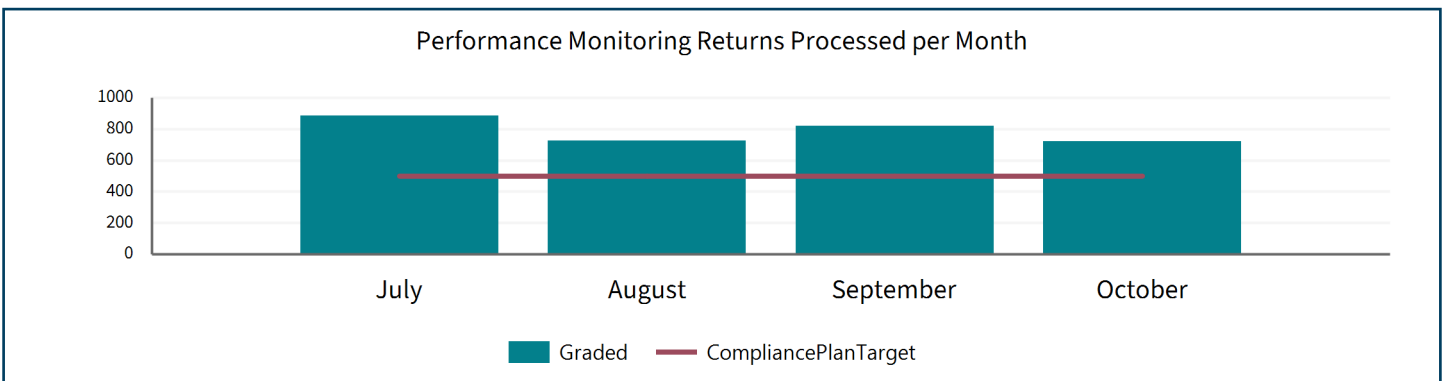
COMPLIANCE AND ENVIRONMENTAL DELIVERY DATA AND SYSTEMS

Annual Plan Measured	Compliance Plan Target	Annual Plan Target	Total Graded YTD	Compliance Plan Target YTD	Percentage of Target YTD
Percentage of performance monitoring returns completed each year, as per the Compliance Audit and Performance Monitoring Schedule targets	7250	90%	3154	2800	112.6%
Percentage of programmed inspections/audits completed each year, as per the Compliance Audit and Performance Monitoring Schedule targets	1225	90%	358	380	94.2%

CME Metrics Report Measure	Compliance Plan Target	Monitored YTD	Target YTD	Percentage of Target YTD
Individual Resource Consents Requiring Monitoring	2500	1586	833	190.4%

Financial Year To Date Inspection Totals

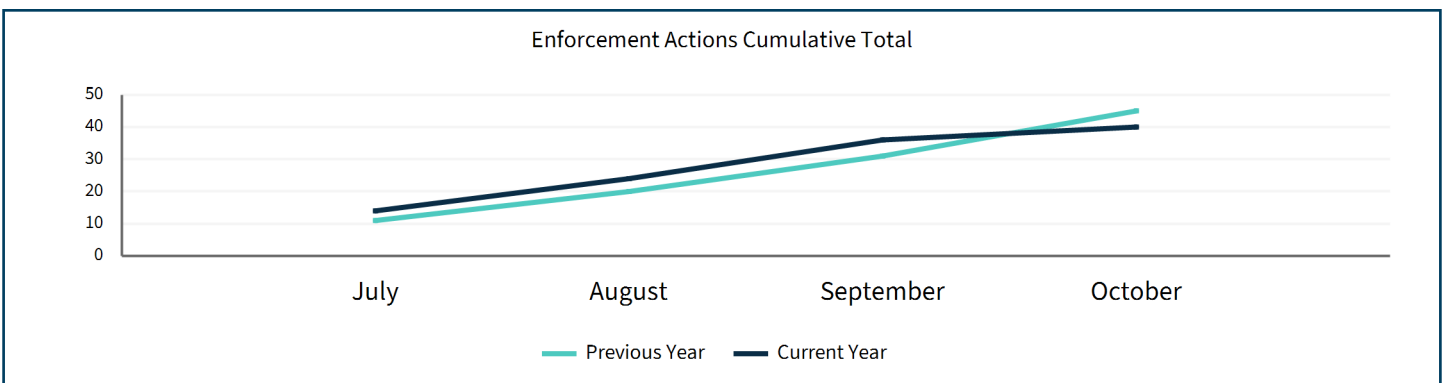
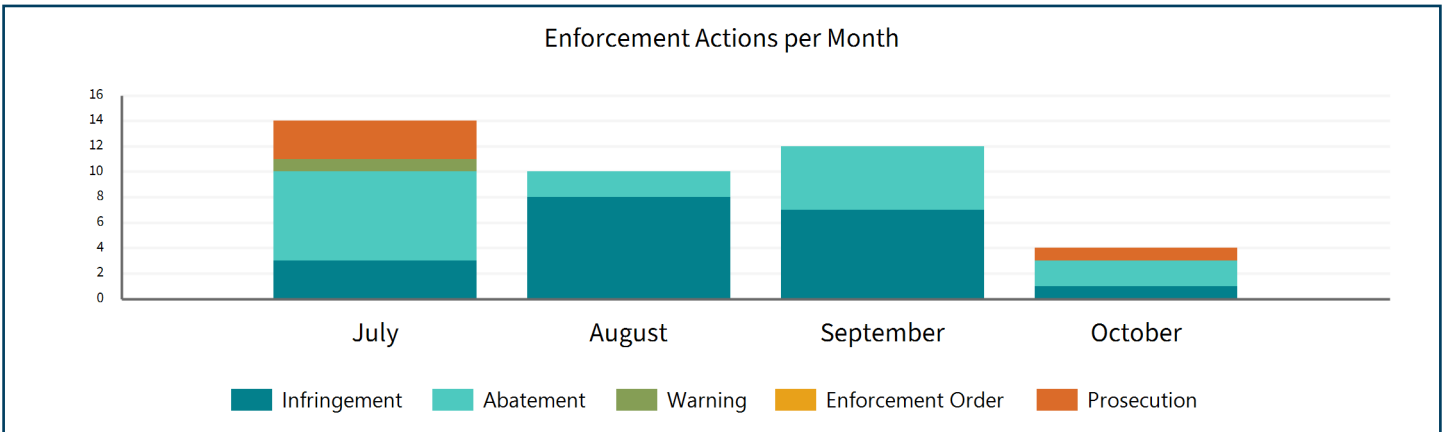
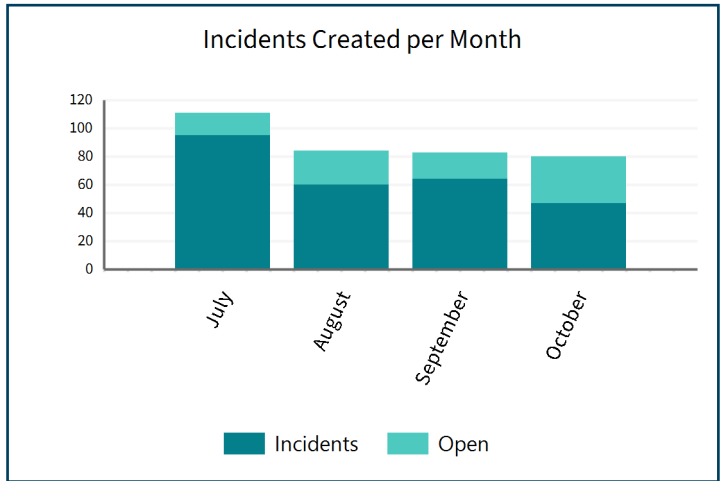
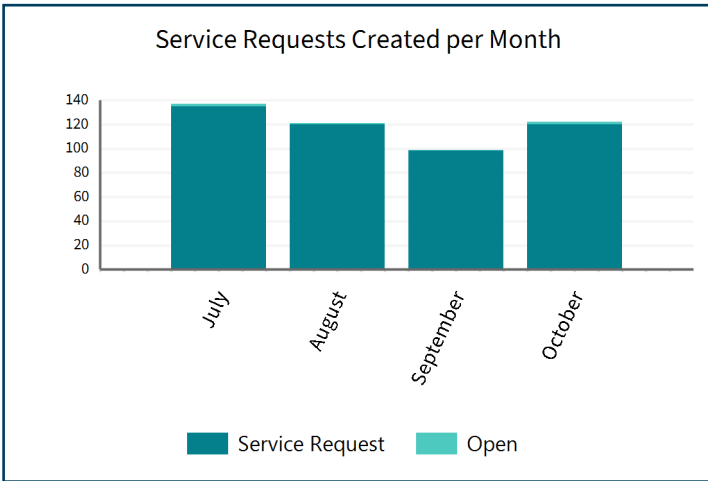
Audits	298	Dairy Inspections	44	Forestry Inspections	16
--------	-----	-------------------	----	----------------------	----



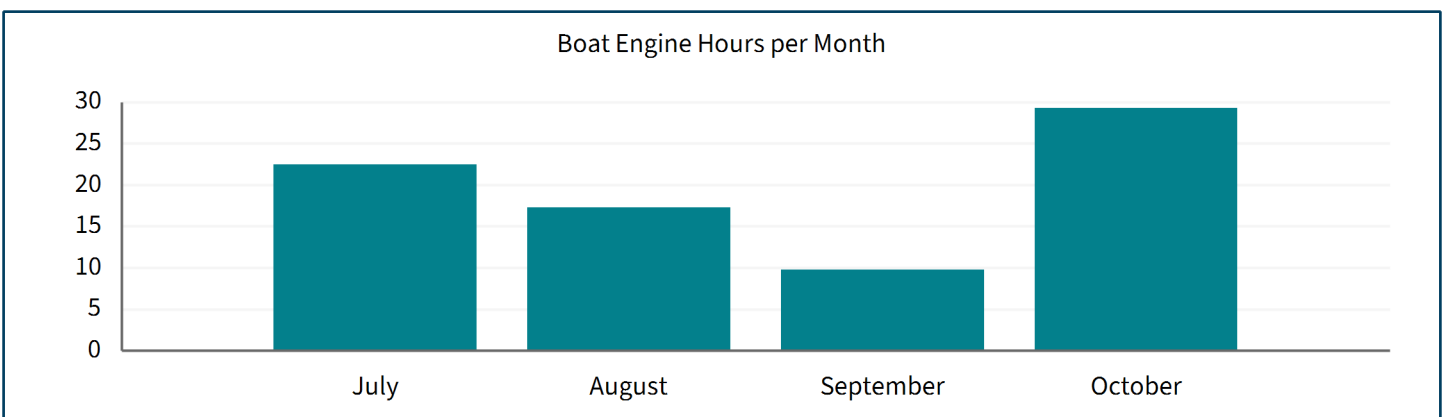
SERVICE REQUESTS, INCIDENTS AND ENFORCEMENT

Financial Year To Date Enforcement Totals

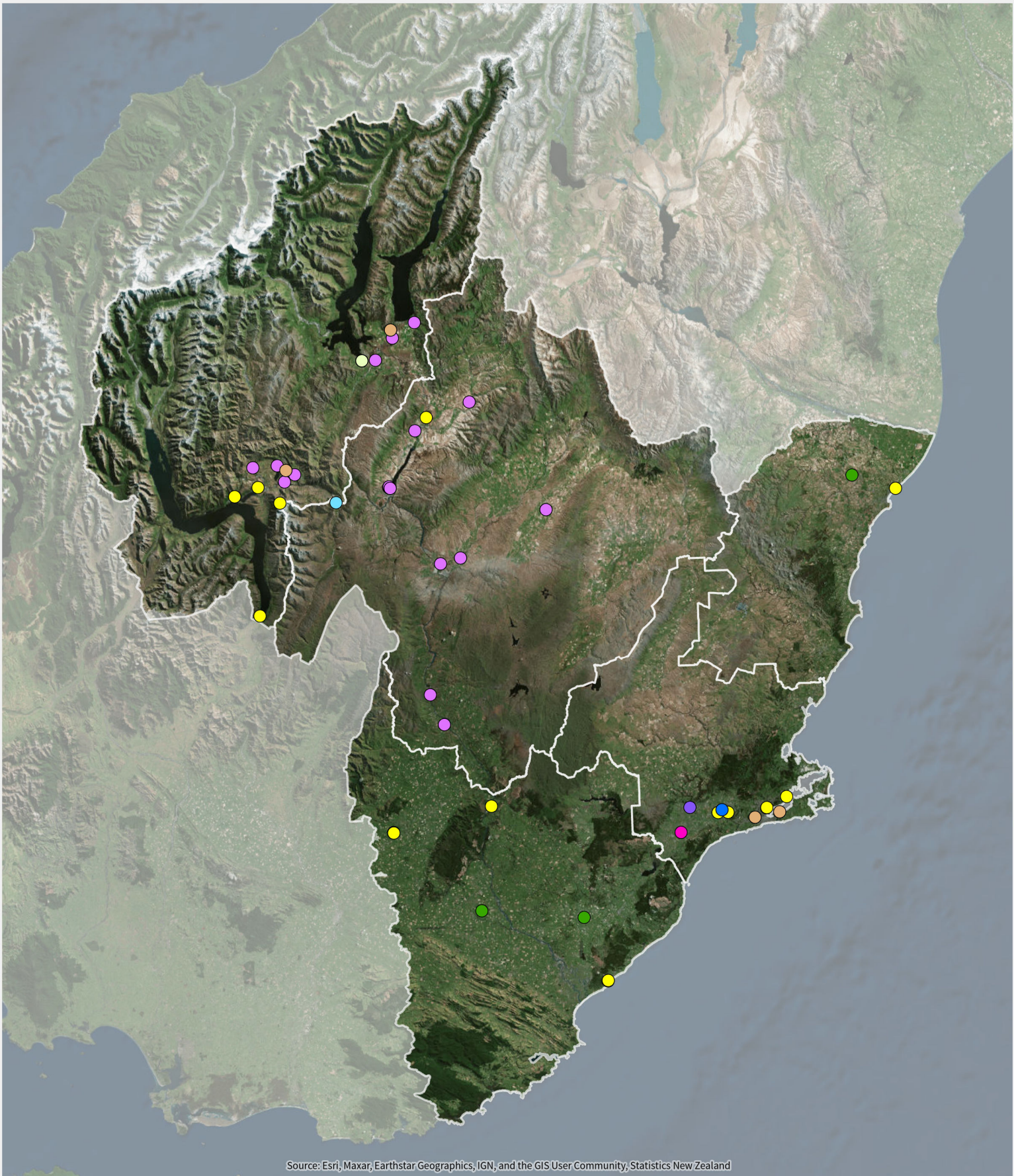
Infringements	19	Abatements	16	Warnings	1	Prosecutions	4
---------------	----	------------	----	----------	---	--------------	---



HARBOUR MASTER



Consents Issued October 2025



Source: Esri, Maxar, Earthstar Geographics, IGN, and the GIS User Community, Statistics New Zealand

- Bore Construction Consent
- Discharge to Air Permit
- Discharge to Land Permit

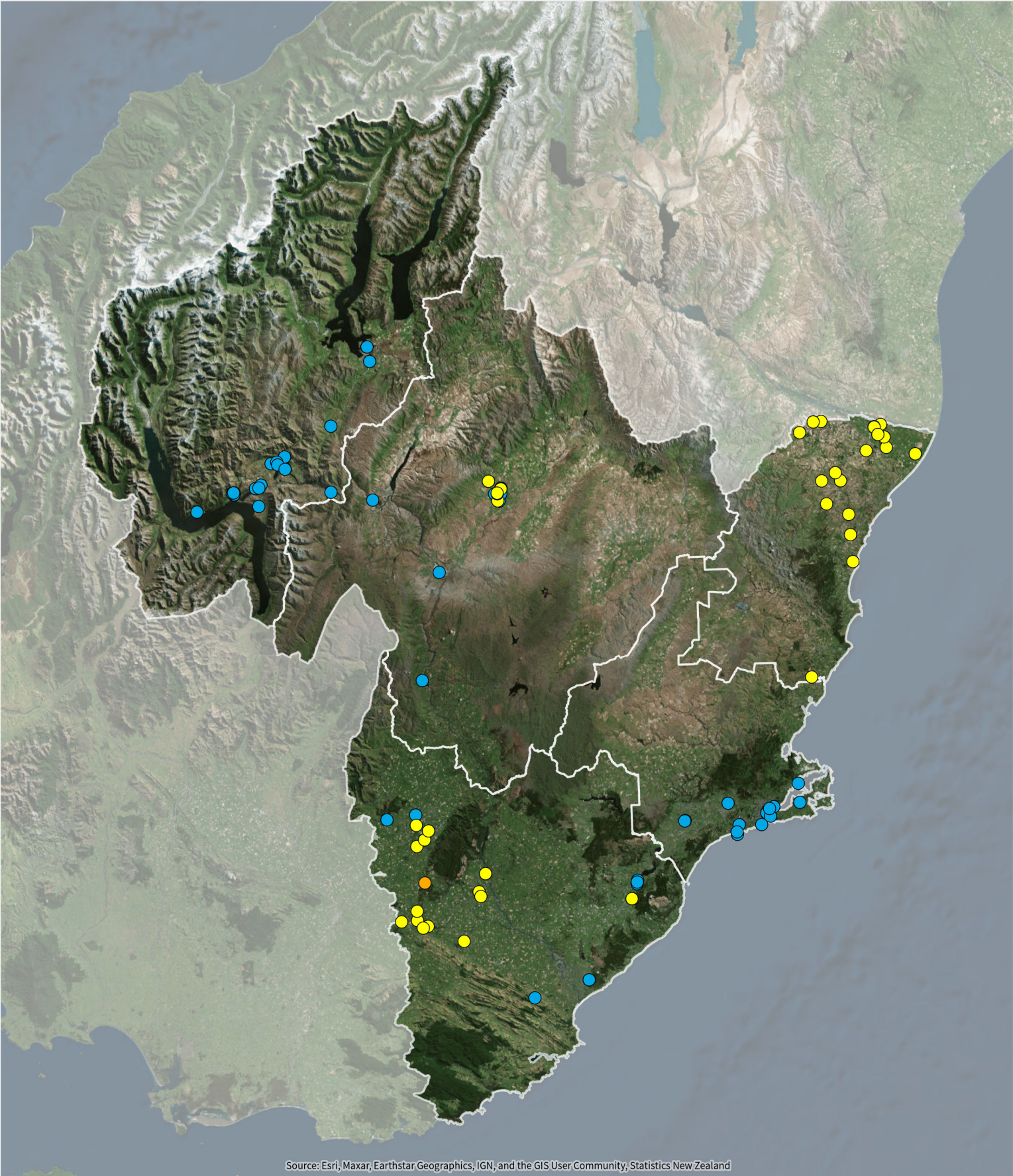
- Discharge to Water Permit
- Earthworks Consent
- Land Use Consent

- Groundwater Take Permit
- Surface Water Take Permit
- Compliance Certificate



Compliance Audits

October 2025



Source: Esri, Maxar, Earthstar Geographics, IGN, and the GIS User Community, Statistics New Zealand

● Dairy (40)

● Forestry (1)

● Audit (72)

