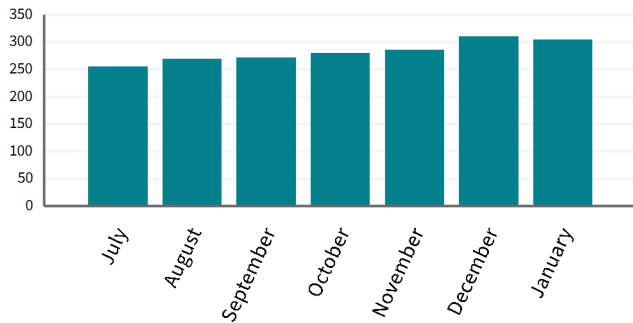


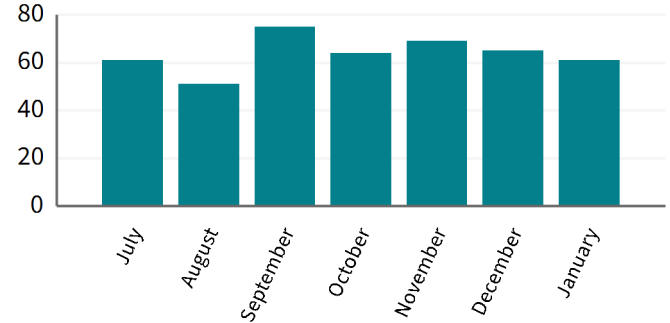
CONSENTS

Level of Service	Target	Current Result
Percentage of resource consent applications processed in accordance with Resource Management Act 1991 legislative timeframes	98%	100%
Percentage of public inquiries for consent information completed within 7 working days	99.5%	97.6%

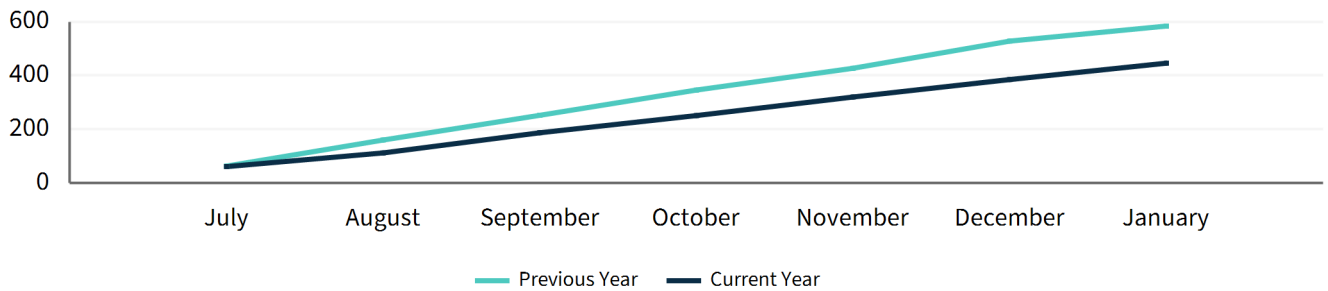
Applications in Progress per Month



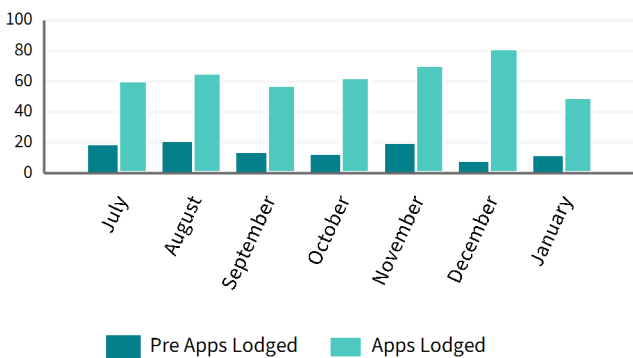
Consents Issued per Month



Consents Issued Cumulative Total



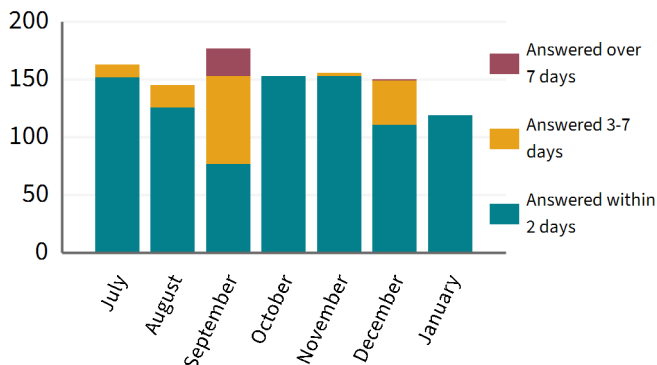
Pre-Applications and Applications Received



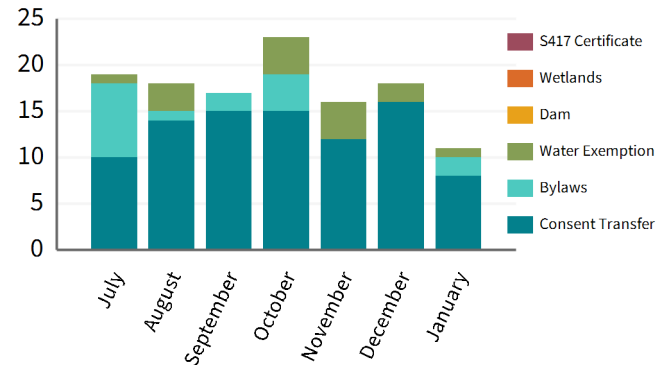
Notified Applications per Month



Consent Public Enquiries per Month



Other Applications per Month



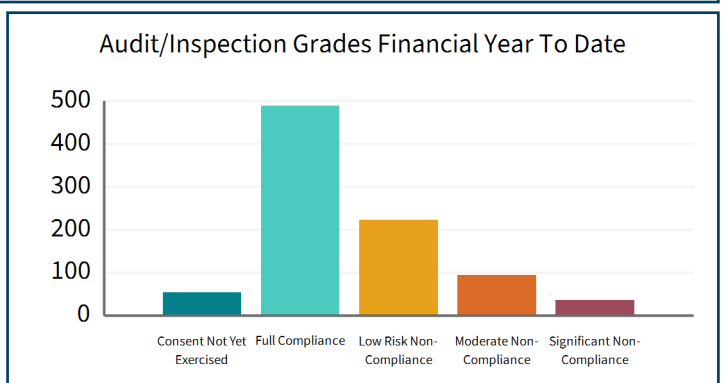
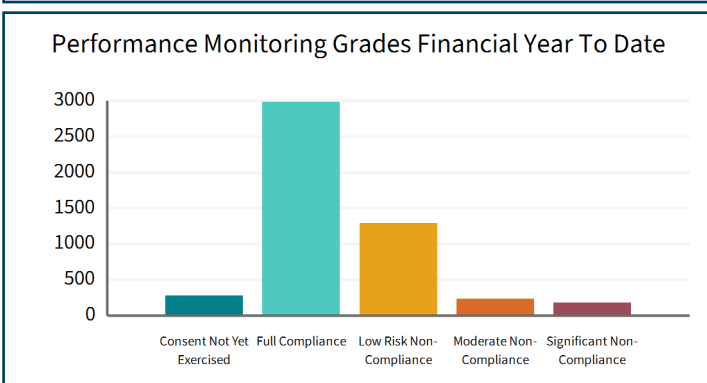
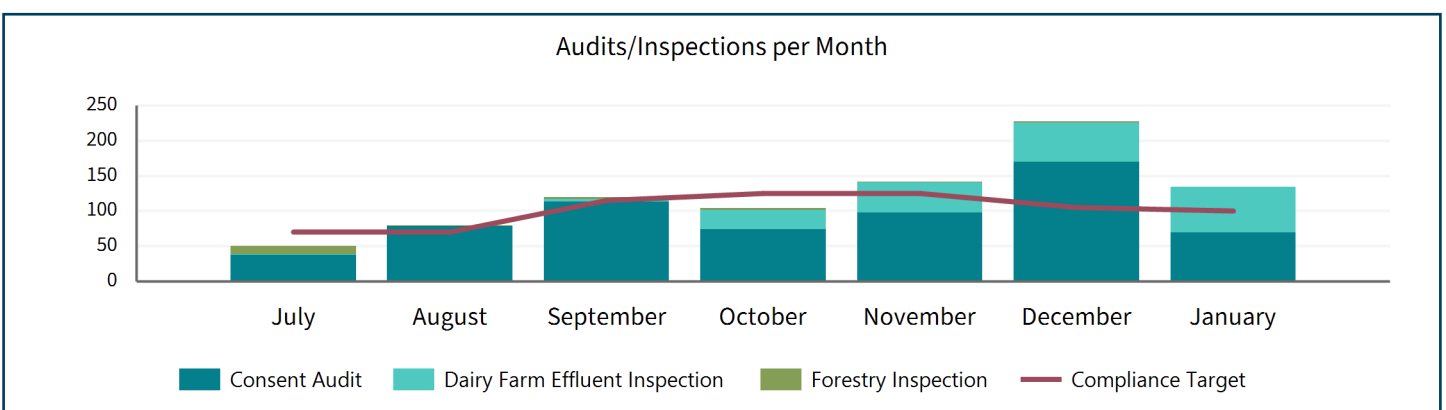
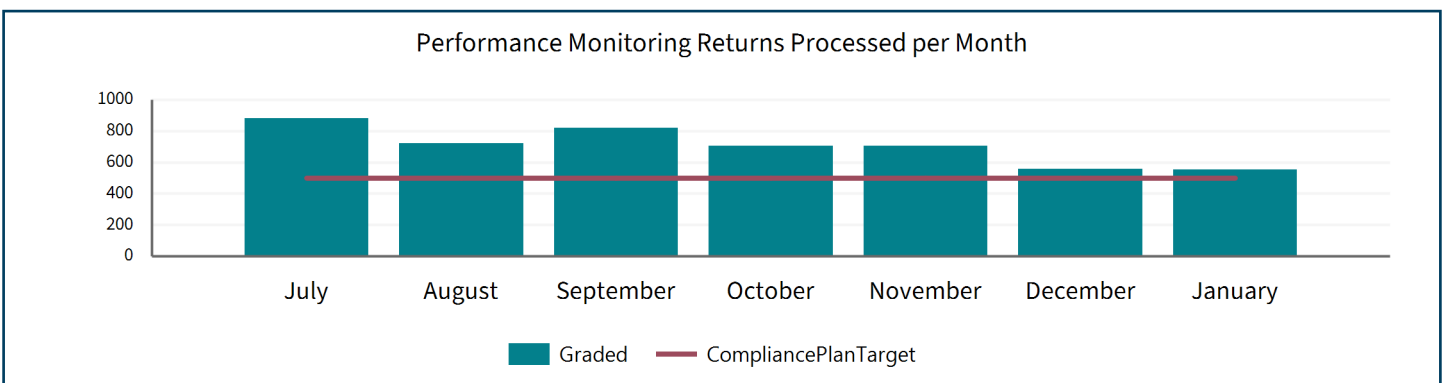
COMPLIANCE AND ENVIRONMENTAL DELIVERY DATA AND SYSTEMS

Annual Plan Measured	Compliance Plan Target	Annual Plan Target	Total Graded YTD	Compliance Plan Target YTD	Percentage of Target YTD
Percentage of performance monitoring returns completed each year, as per the Compliance Audit and Performance Monitoring Schedule targets	7250	90%	4943	4500	109.8%
Percentage of programmed inspections/audits completed each year, as per the Compliance Audit and Performance Monitoring Schedule targets	1225	90%	854	710	120.3%

CME Metrics Report Measure	Compliance Plan Target	Monitored YTD	Target YTD	Percentage of Target YTD
Individual Resource Consents Requiring Monitoring	2500	2431	1458	166.7%

Financial Year To Date Inspection Totals

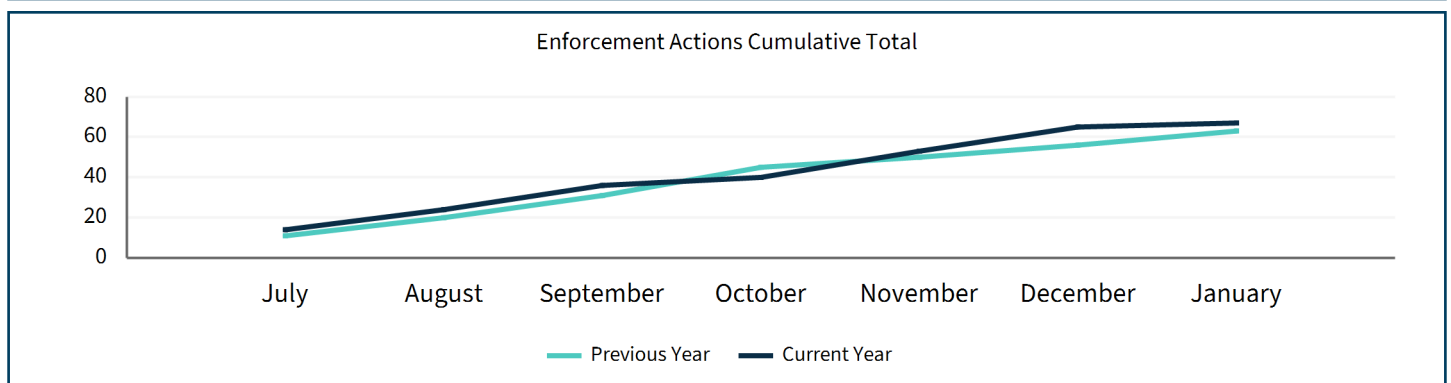
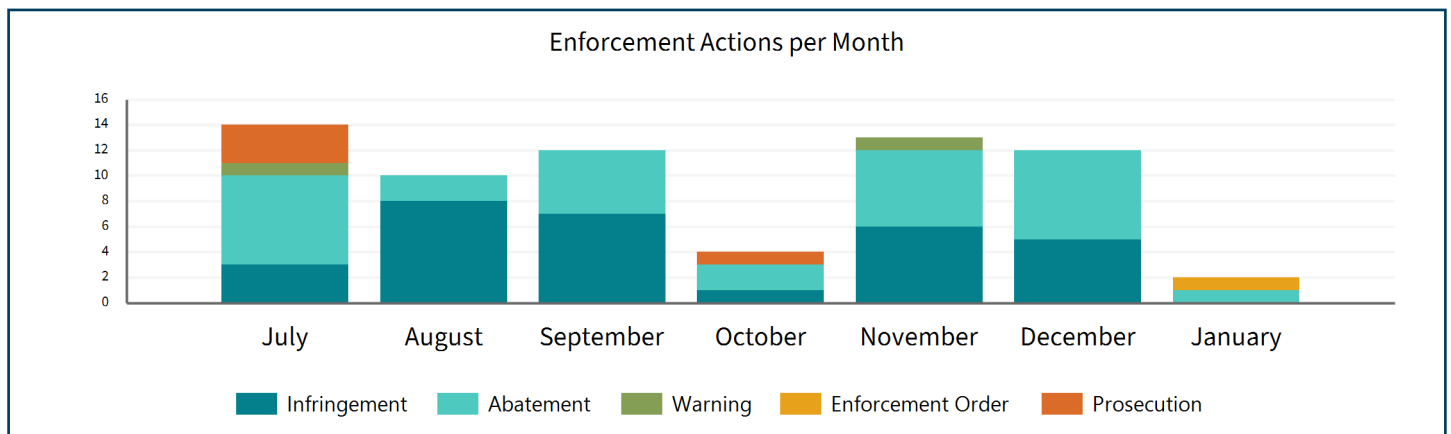
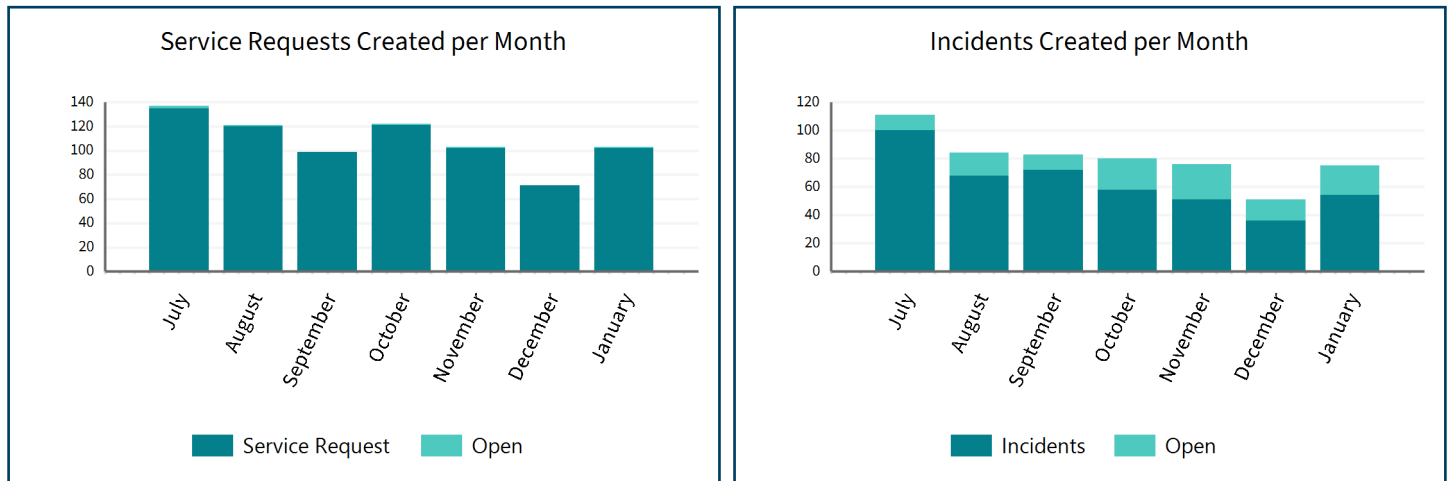
Audits	638	Dairy Inspections	195	Forestry Inspections	21
--------	-----	-------------------	-----	----------------------	----



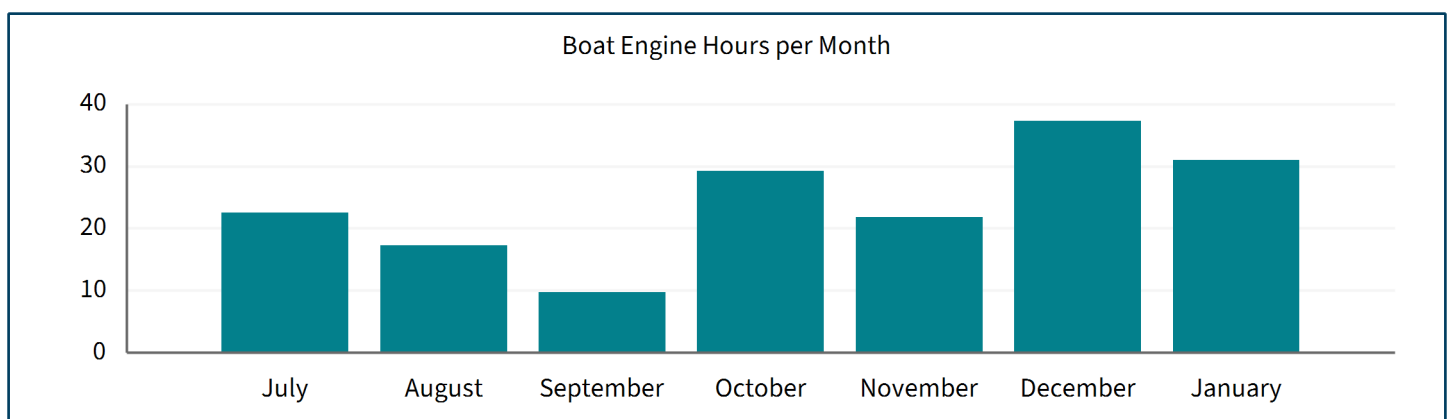
SERVICE REQUESTS, INCIDENTS AND ENFORCEMENT

Financial Year To Date Enforcement Totals

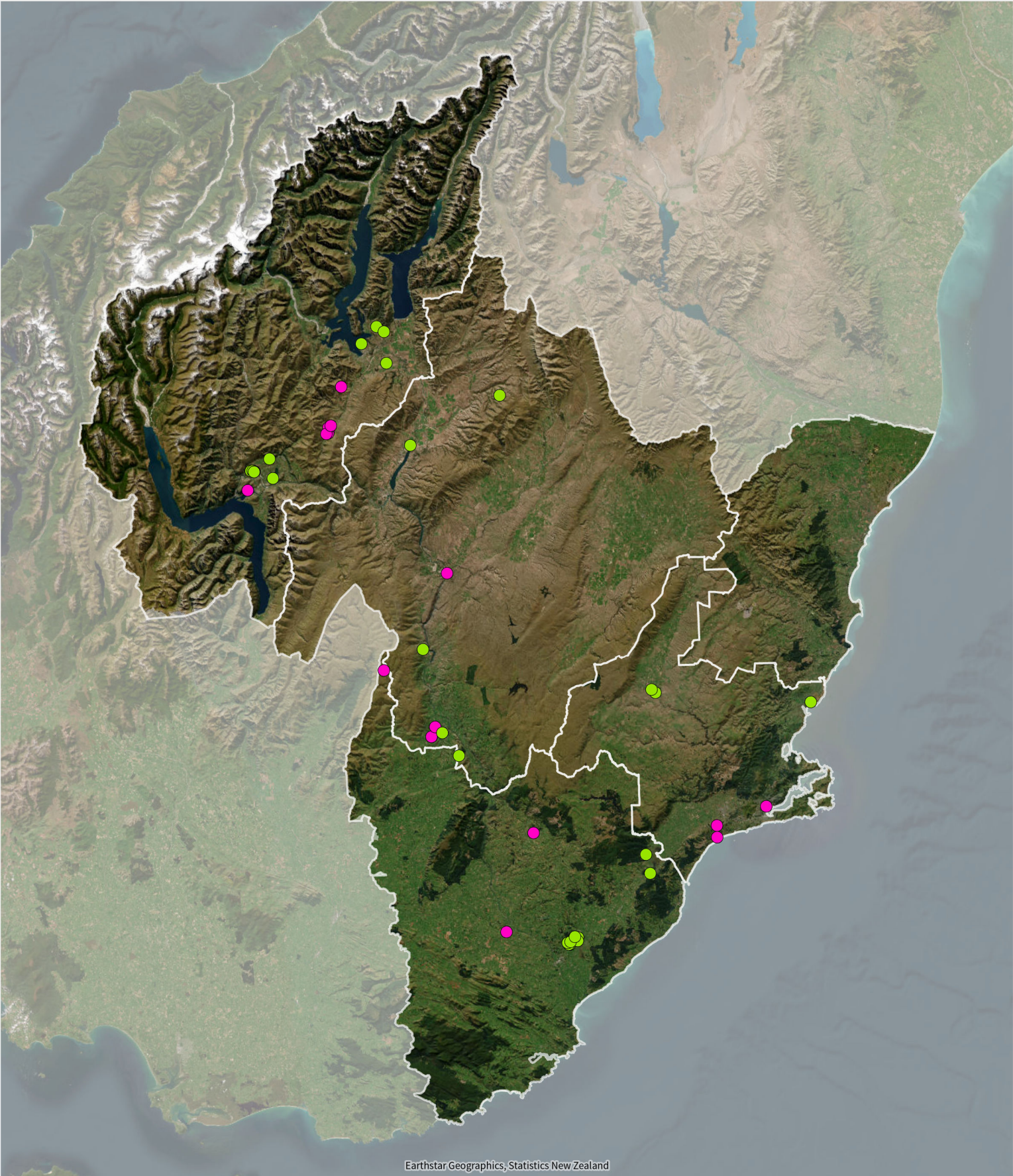
Infringements	30	Abatements	30	Warnings	2	Prosecutions	4
---------------	----	------------	----	----------	---	--------------	---



HARBOUR MASTER



Biosecurity Inspections January 2026



Biosecurity Inspections

- Rabbit
- Non-Rabbit



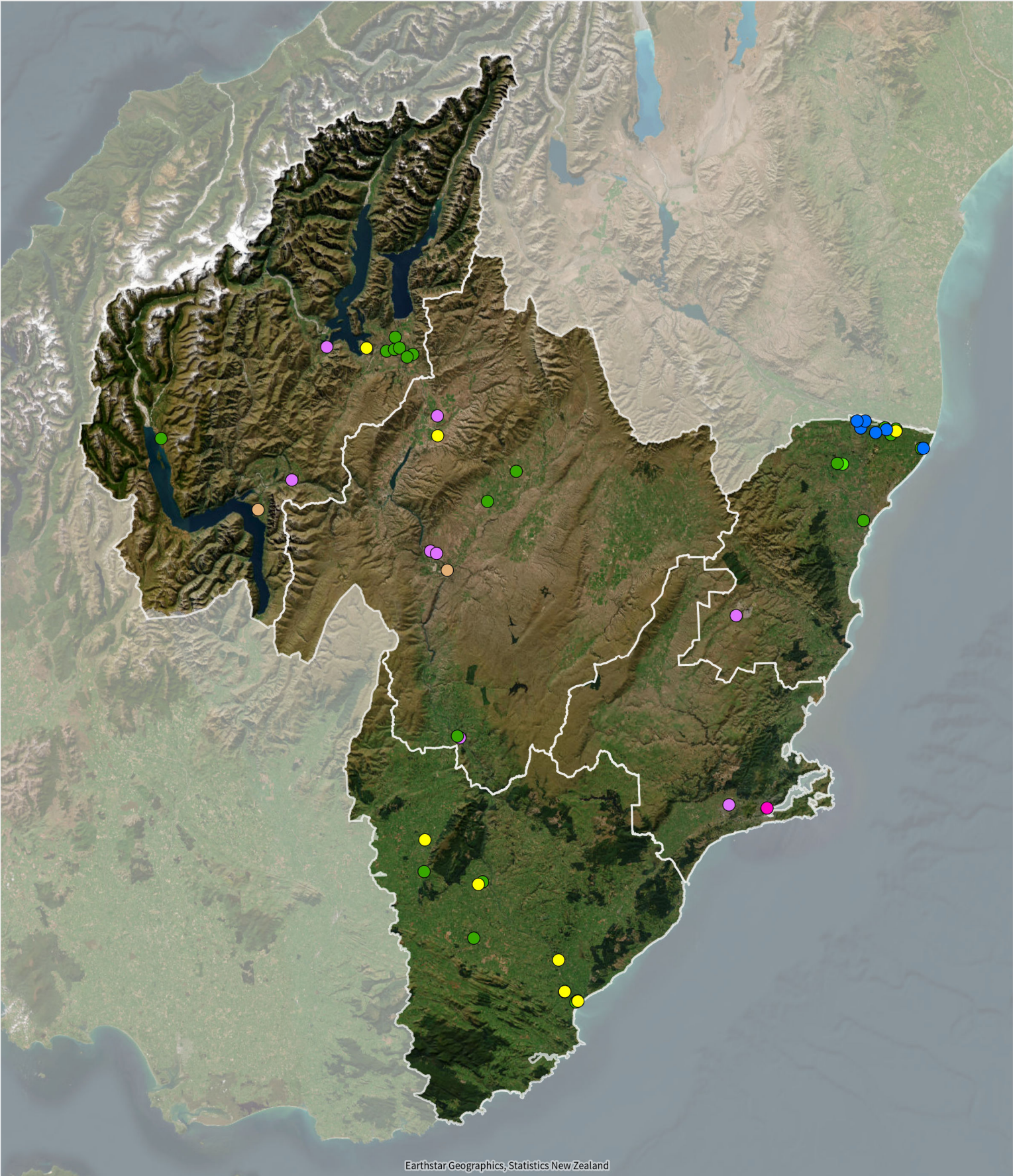
Incidents January 2026










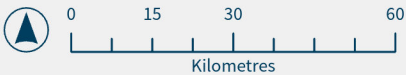
- Incidents
- Open
 - Completed



Consents Issued January 2026

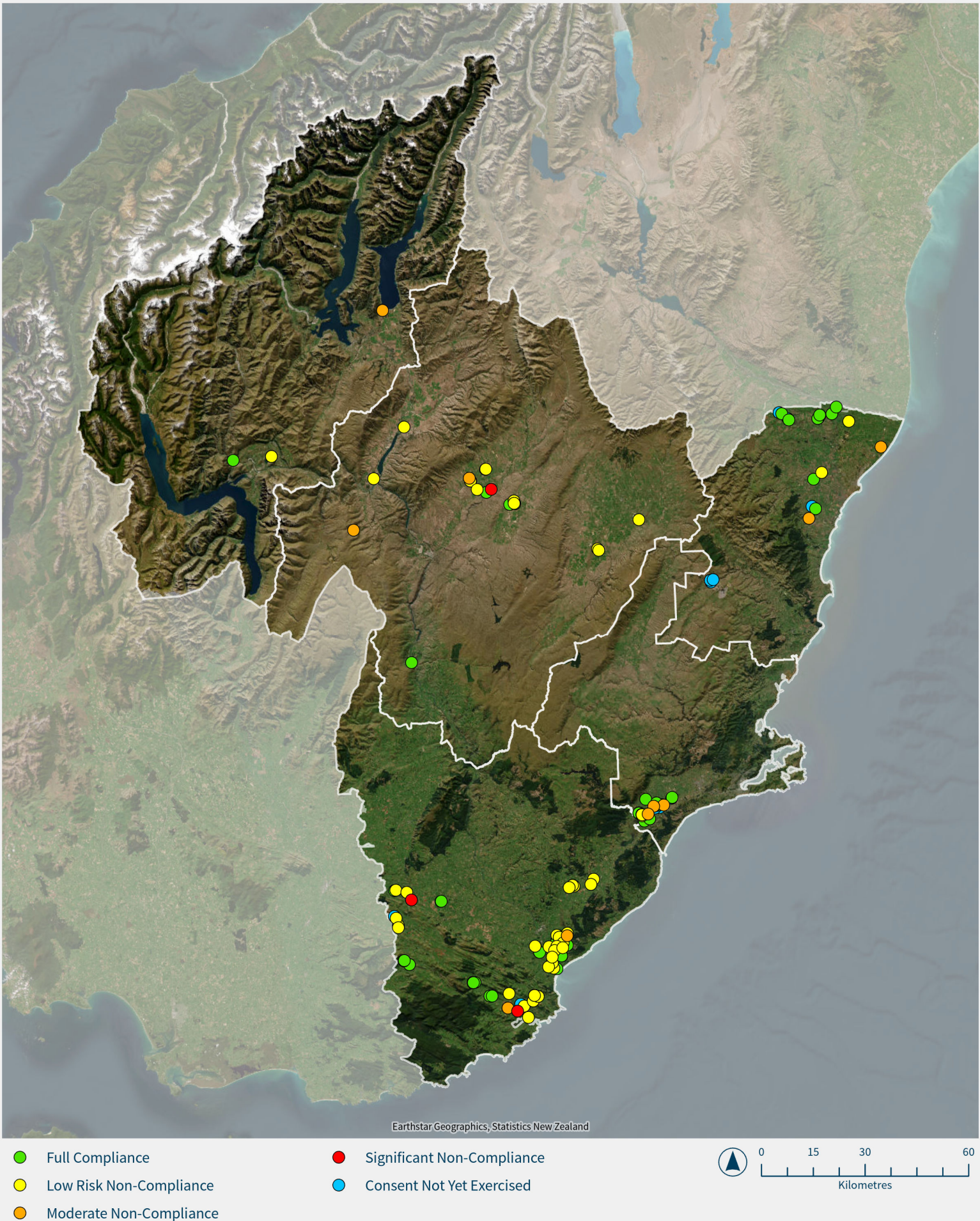


- | | |
|---|---|
|  Bore Construction Consent |  Earthworks Consent |
|  Discharge to Air Permit |  Land Use Consent |
|  Discharge to Land - Dairy Support |  Groundwater Take Permit |
|  Discharge to Land Permit | |



Information on this map may not be used for the purposes of any legal disputes. The user should independently verify the accuracy of any information before taking any action in reliance upon it. Only records with a spatial location will show on the map. This map was generated for A4 printing on 3/02/2026 at the scale of 1:1,400,000.

Audits Completed January 2026



Information on this map may not be used for the purposes of any legal disputes. The user should independently verify the accuracy of any information before taking any action in reliance upon it. Only records with a spatial location will show on the map. This map was generated for A4 printing on 3/02/2026 at the scale of 1:1,400,000.

Catchment Advisor Engagements January 2026



Earthstar Geographics, Otago Regional Council, Statistics New Zealand

● Catchment Advisor Engagements



Information on this map may not be used for the purposes of any legal disputes. The user should independently verify the accuracy of any information before taking any action in reliance upon it. Only records with a spatial location will show on the map. This map was generated for A4 printing on 3/02/2026 at the scale of 1:1,400,000.