

# Graphic Supplement

**Evidence, M W Moore**

**August 2025**

Proposed Building, 21 Marine Parade, Taieri Mouth



**MIKE MOORE**

*BSc, Dip LA, MRRP, ANZILA*

LANDSCAPE ARCHITECT

*Po box 5076, Dunedin*

*Tel (03) 479 0833 . fax (03) 479 0834 . cell 0274 360 163*

*Email m.moore@clear.net.nz*



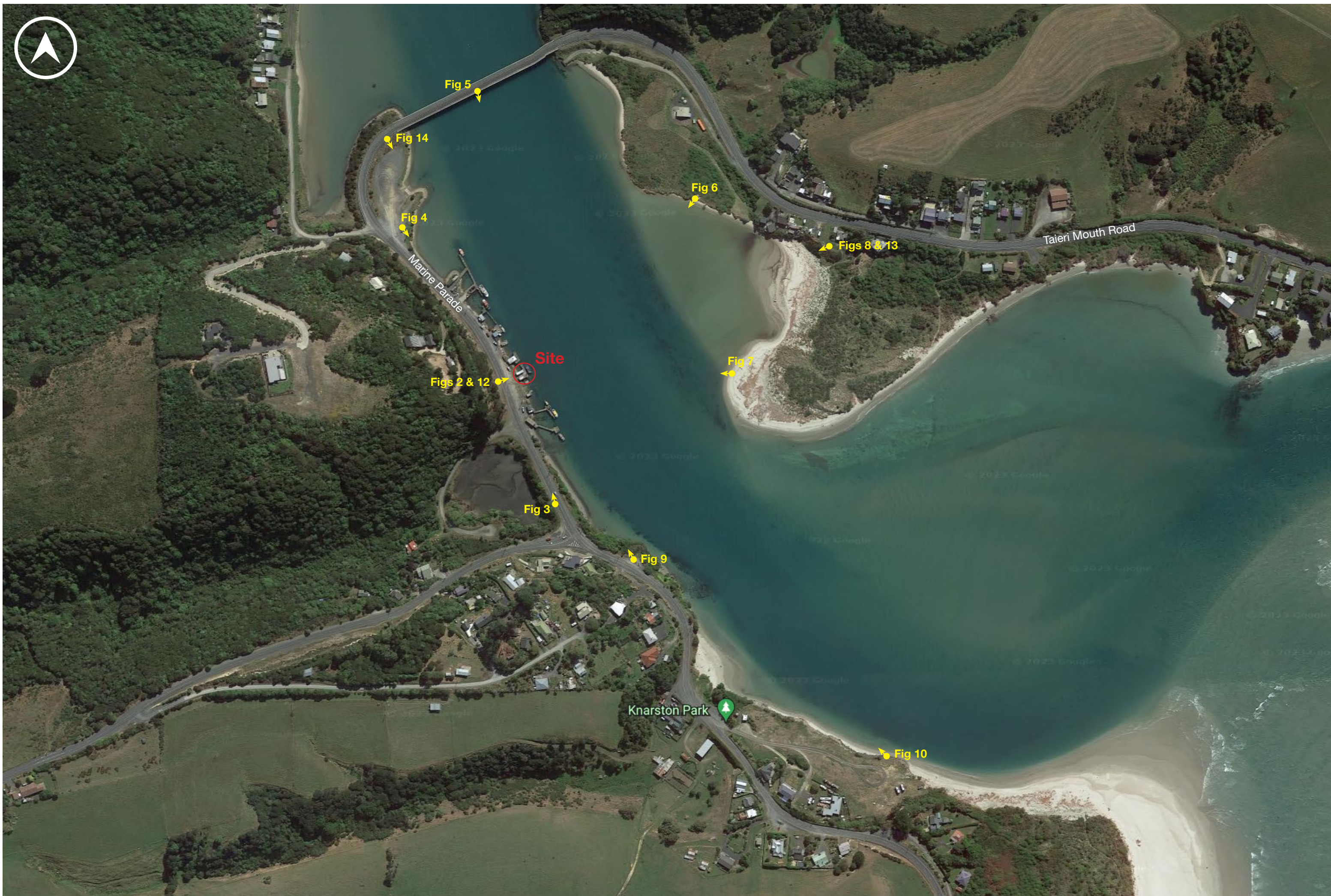


Figure 1: Location and photo-point plan





**Figure 2: View of the site from Marine Parade adjacent**

Camera: Canon EOS 1000D / Image: Stitched photographs – focal length 29mm



**Figure 3: View toward the site from Marine Parade to the south**

Camera: Canon EOS 1000D / Image: Stitched photographs – focal length 50mm



**Figure 4: View toward the site from Marine Parade to the north**

Camera: Canon EOS 1000D / Image: Stitched photographs – focal length 50mm





**Figure 5: View toward the site from the bridge**

Camera: Canon EOS 1000D / Image: Stitched photographs – focal length 50mm



**Figure 6: View toward the site from across the Taieri River**

Camera: Canon EOS 1000D / Image: Stitched photographs – focal length 50mm



**Figure 7: View toward the site from across the Taieri River**

Camera: Canon EOS 1000D / Image: Stitched photographs – focal length 50mm





**Figure 8: View across the river toward the site from near Taieri Mouth Road**

Camera: Canon EOS 1000D / Image: Stitched photographs – focal length 50mm



**Figure 9: View toward the site from the lookout adjacent to Marine Parade**

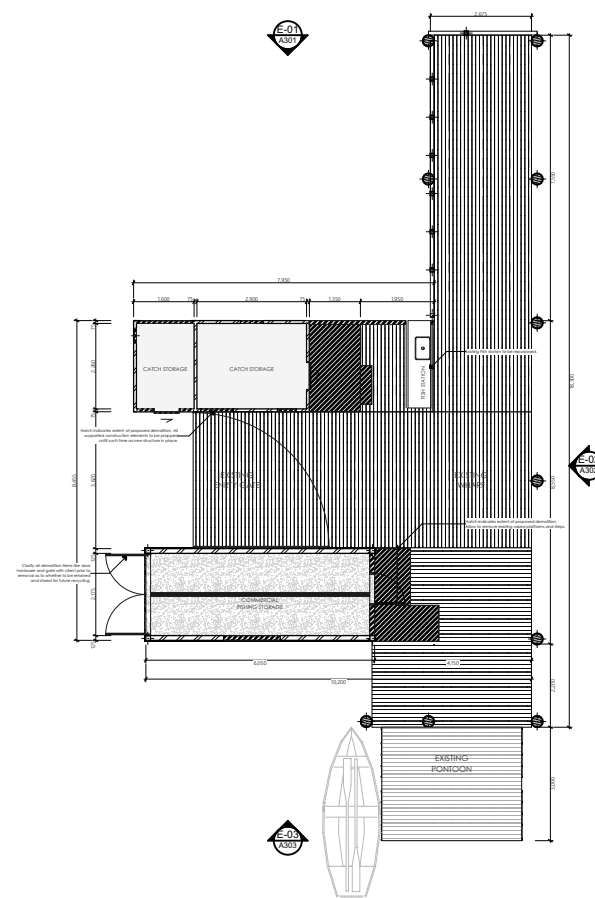
Camera: Canon EOS 1000D / Image: Stitched photographs – focal length 50mm



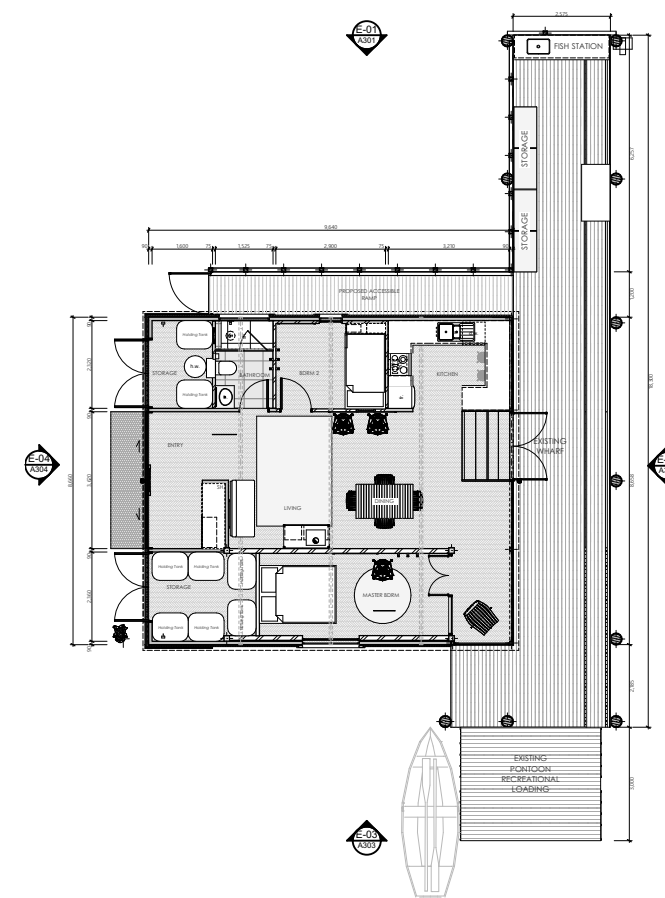
**Figure 10: View toward the site from Knarston Park**

Camera: Canon EOS 1000D / Image: Stitched photographs – focal length 50mm





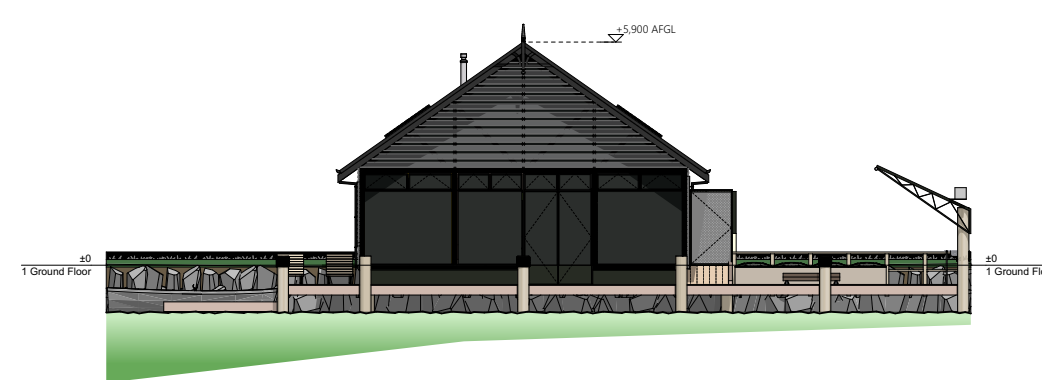
### Existing Floor Plan



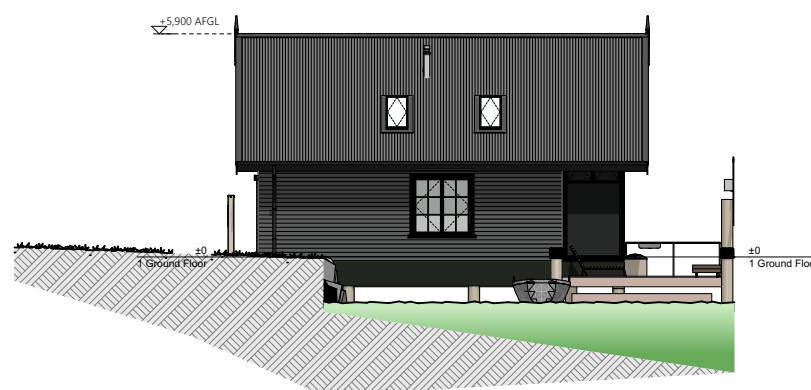
## Proposed Floor Plan



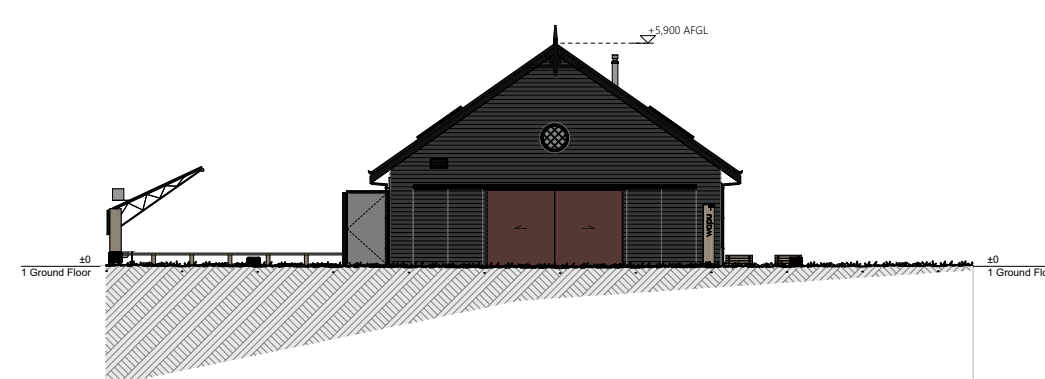
### North Elevation



### East Elevation



## South Elevation



### West Elevation

### Figure 11: The proposed development





**Figure 12: Photo simulation illustrating the proposed building from adjacent on Marine Parade**

Camera: Canon EOS 80D / Image: Stitched photographs – focal length 50mm



**Figure 13: Photo simulation illustrating the proposed building from across the river from near Taieri Mouth Road.**

Camera: Canon EOS 1000D / Image: Stitched photographs – focal length 50mm



**Figure 14: Photo simulation illustrating the proposed building from the South end of the bridge.**

Camera: Canon EOS 80D / Image: Stitched photographs – focal length 50mm





Figure 15(a): Macandrew Bay



Figure 15(b): Back Beach, Port Chalmers

Figure 15: Boat Sheds - Otago Harbour





Figure 15(c): Careys Bay



Figure 15(d): Broad Bay



Figure 15(e): Andersons Bay



Figure 15(d): Turnbulls Bay

**Figure 15: Boat Sheds - Otago Harbour**