

Annexure 6:

Responses to s92 requests prepared by WSP in respect of landscape matters



16 September 2024

Dean Fergusson
Oceana Gold (NZ) Ltd
Macraes

By email to: dean@rarl.co.nz,
cc dean.fergusson@oceanagold.com

OceanaGold MP4: S92 RFI – Landscape Matters

3-C1680.10

Dear Dean

Please find below our response to the S92 RFI Questions 6 and 7 on landscape matters from the Dunedin City Council and the Waitaki District Council regarding the Macraes Phase 4 resource consent applications.

WDC and DCC S92 RFI: Questions

6: Waitaki Landscape Study

In the landscape assessment at 4.2 there is a heading referring to the Waitaki Landscape Study in which it is stated the *'those aspects of the Waitaki Landscape Study that relate to the Macraes Operation are described at Section 3.4.2.1 of this assessment'*.

However, Section 3.4.3.1 doesn't exist. There is also no mention of whether there are any Outstanding Natural Landscapes or Features that came out of the Landscape Study, included or affected by the proposed extension though the AEE documents states that there are no ONLs or ONFs affected.

Our Response:

The 'Section 3.4.2.1' reference appears to be an error. Regarding the findings of the WDC Waitaki Landscape Study, this is fully discussed at Section 4.5 Resource Management Act of the MP4 LVA. It notes that there are no ONLs or ONFs in the area.

However, the draft Waitaki District Plan now provides an updated list of ONLs that includes ONL 11- Taieri Ridge. This draft Plan has no statutory weight until it is notified. Its description notes that this ONL:

Comprises those parts of the ridge within Waitaki District, between Highlay Hill in the north and Middlemarch in the south. The boundary with Dunedin City zigzags about, and while parts of the west side descending almost to Hyde are within Waitaki, at other places the boundary follows or is near the ridgeline. The land comprises rugged, dry, undeveloped tor landscapes on west-facing areas and the ridge, and developed farmlands on east-facing areas. On the east side, the current Rural Scenic boundary is at the limit of improved farmlands, variably 5-600m. All areas of the summit and west side are zoned Rural Scenic and all adjacent areas within Dunedin City are ONL. In the north, the ridge

abuts the west side of the extensive Macraes Gold Mine workings, which recently have extended over the ridge and into Dunedin City.

The Coronation component of MP4 does not propose any changes within the eastern (Mine South) face of the Taieri Ridge that falls within the Waitaki District, however the proposed Taieri Ridge ONL11 has the Coronation Haul Road as its topographical northern boundary.

Refer Figure 1 below. The proposed MP4 works are approximately a kilometre from the edge of the proposed ONL. If this ONL were to be included in an operative DP, there is a separation in terms of elevation and distance that the effect would be “very low” (equivalent to less than minor / negligible).

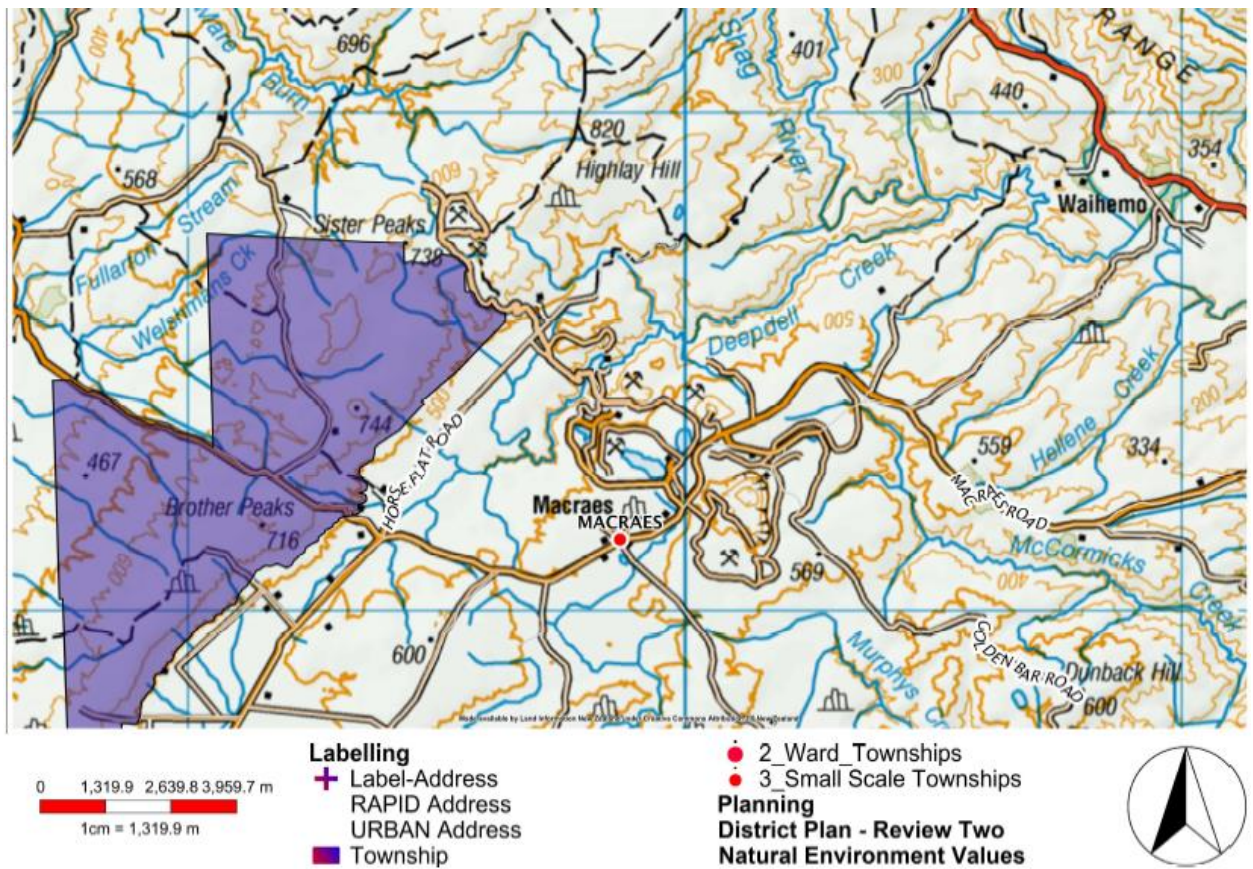


Figure 1: Topographical map showing ONL 11: Taieri Ridge (overlay in purple) as provided by WDC Plan Review Team (22.08.2024)

7: Viewpoints and visual simulations

The Zones of Theoretical Visibility Mapping (ZTV mapping) method used are described including the limitations of the methodology and of the visual simulations. It is stated that several of the same viewpoints that were previously used for MP3 are used for MP4. The viewpoints and visual simulations while useful appear minimal for the scale of the extension sought.

Please comment as to why there are not more simulations especially of distant views. The Longsdale Road Stockyards visual simulation is the only distant view provided. The Zones of

Theoretical Visibility Map shows there are many locations where the rock stacks will be visible from distant views.

Our Response:

In our experience, there is little benefit in creating viewpoints that show only a small change barely discernible from a distant observation point.

In regard to the following, it is noted:

1. **Coronation:** There are minimal points that the public can view the Coronation works from at a distance. Viewpoint 1 provides a representative distant view as it has for previous Coronation LVAs. Viewpoint 2 demonstrates that there is not a view from Golden Point Road.
2. **Innes Mills-Frasers:** This is an expansion of the existing Innes Mills pit. As it is already excavated, there are no views to see from a distance. Hence viewpoints are localised based on the viewing audience and the points where they would have the opportunity to see the pit on its northern side, near the Macraes Road and a newly established public lookout area.
3. **Golden Bar:** According to the Zone of Theoretical Visibility (ZTV) (Refer attachment 3 of the LVA; a small snip of which is Figure 2 below) there is the possibility of distant views from Macraes Road (road highlighted in Figure 2). However, the following is noted of those viewing opportunities:
 - Viewing the distant countryside while driving along Macraes Road would be hazardous. Noticing a contrast in the distant terrain and identifying it as a mine would be unlikely.
 - While the ZTV does indicate visibility, it does not take into account the effect of distance between road and mine area (at least 4- 6km), the relative dimensions of the mine at this distance, or localised undulations in the road or the topography immediately adjoining the road (that would either obscure an outward view or make for short, interrupted views at best).
 - Macraes Road is not orientated towards the site, placing Golden Bar in the distant peripheral view for the travelling public going towards Dunback. Travelling towards Macraes, the site would not be visible at all.
 - Available to only a small viewing audience - there are very few if any safe stopping areas through the relevant section of Macraes Road, so it is unlikely the public will be stopping to view, especially now there is an advertised viewing area of the mine above Frasers Pit. In addition, Macraes Road is a low-volume rural road, which implies a low potential viewing audience. Golden Bar Road is rarely used, except by mine personnel and local farmers.
 - Golden Bar will be increasingly less discernible as vegetation establishes. While the distant view to Golden Bar would present more of a contrast during the works, this will diminish once the grass cover of the Golden Bar waste rock stack has established.
 - The viewing opportunities are, as mentioned, distant.

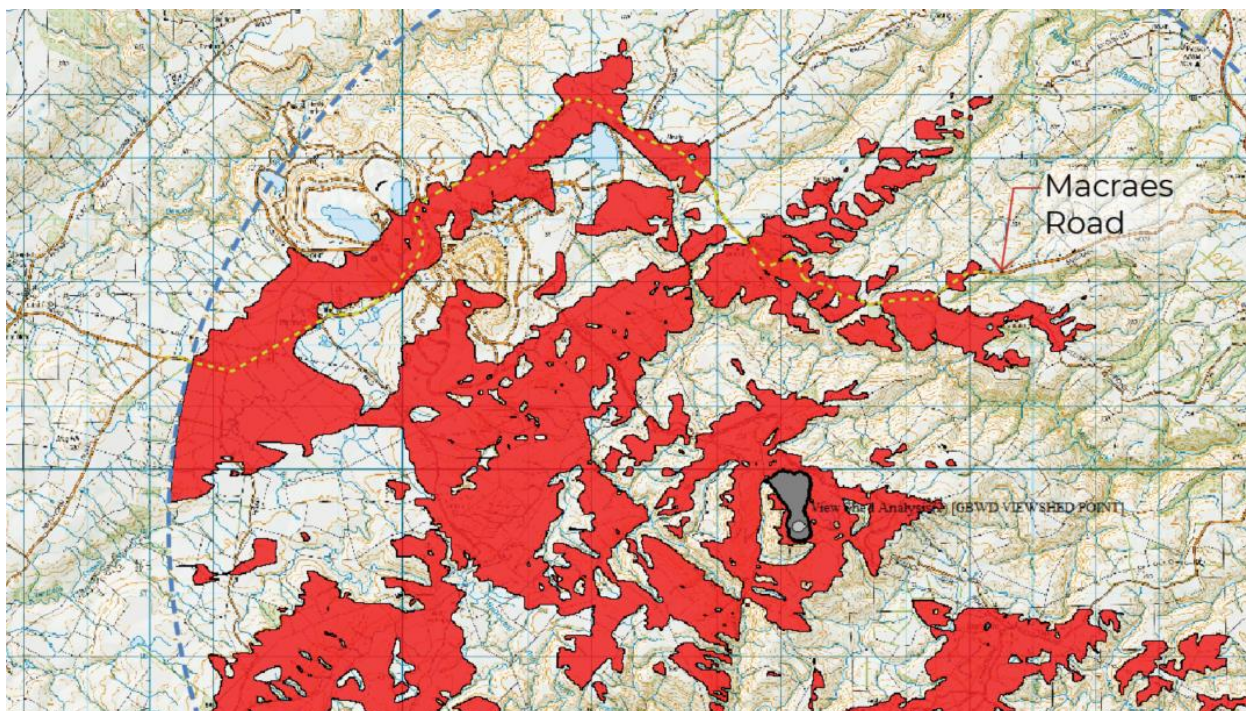


Figure 2: Snip from ZTV with yellow dashed line showing location of road.

Regards

M Back

Meg Back
Senior Landscape Architect | Kaihoahoa Whenua