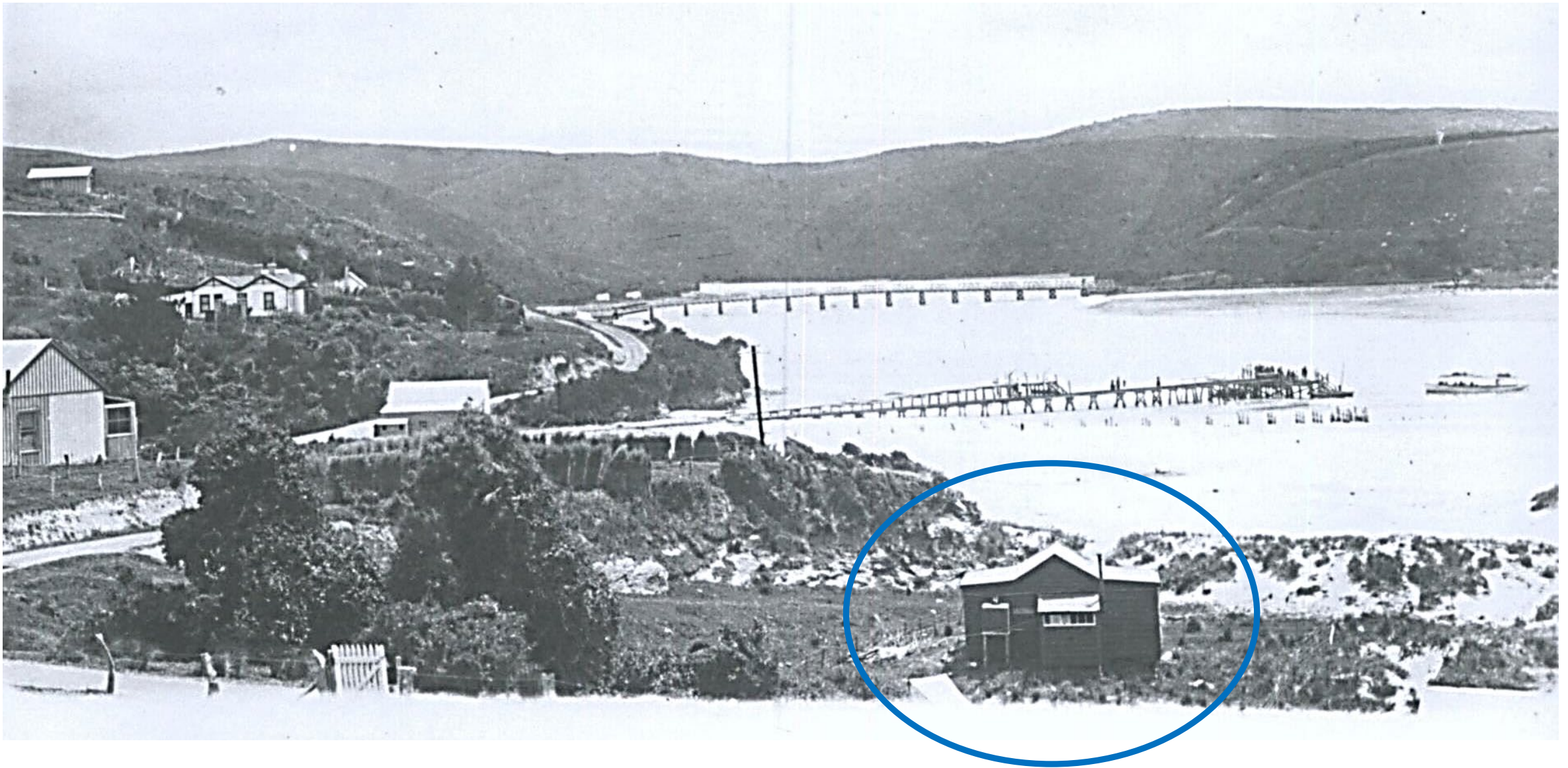




Greg & Angela Mirams  
Coastal Permit RM22.550

*Sunrise from the wharf*





View of one of the early wharves and wharf storage/services shed, located opposite the store  
Note: Mirams family holiday house in the foreground (late 1800's)



# State of the wharf at purchase – from water (January 2022)





# From the landward side





# The western end





# The Pontoon





# Decades of neglect and disrepair





# Relics of a bygone industry





# Relics of a bygone industry





# Relics of a bygone industry





# The vision begins



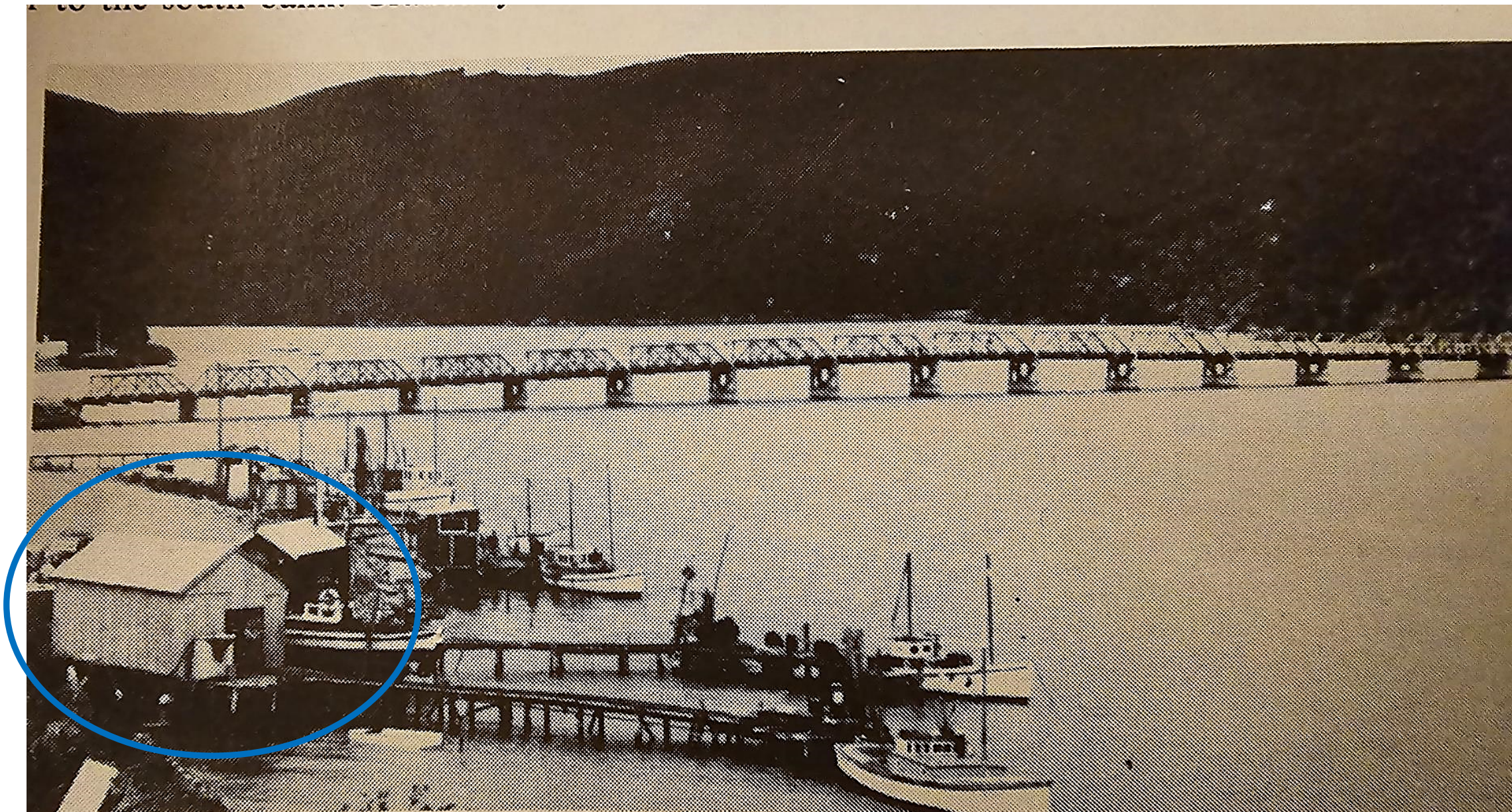


To go forward – we needed to go back



The changing landscape of Taieri Mouth - none of the houses or wharf structures pictured exist today





The Taieri Mouth fishing fleet in the 1950's – it reached its peak in the 1980s (>20 vessels).  
Note the simple building form of the various sheds.





Tourism and boating related activities were the main industry in Taieri Mouth (early 1900)





The boat house was located on the Taieri river and provided accommodation for tourists to stay in (early 1900).

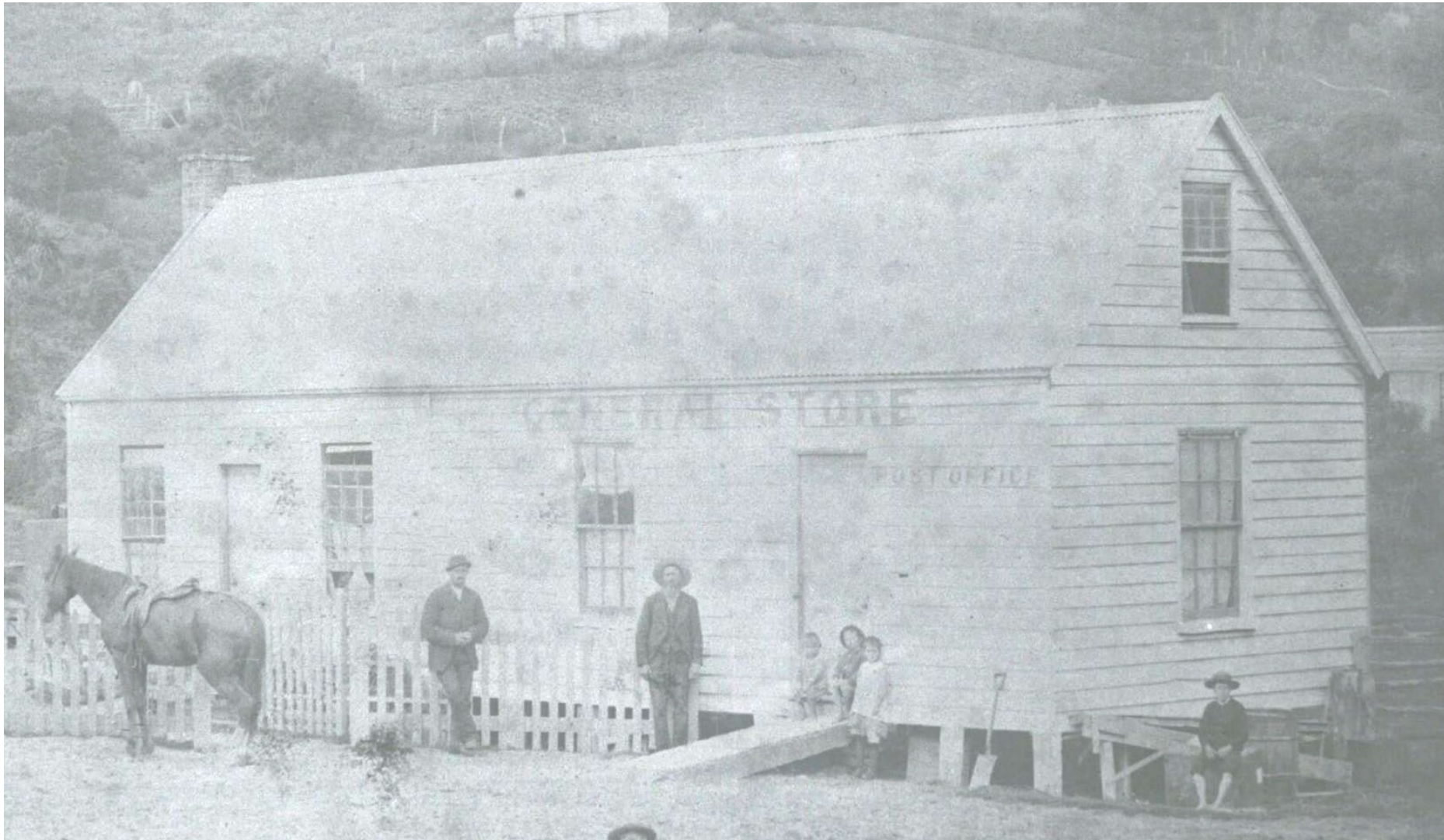




The Taieri Mouth fishing fleet in the 1980s



# Informing the design



This building is the original Taieri Mouth General Store and Post Office





One of the early wharves and service shed – located opposite the store



# Original Design – based on heritage architecture



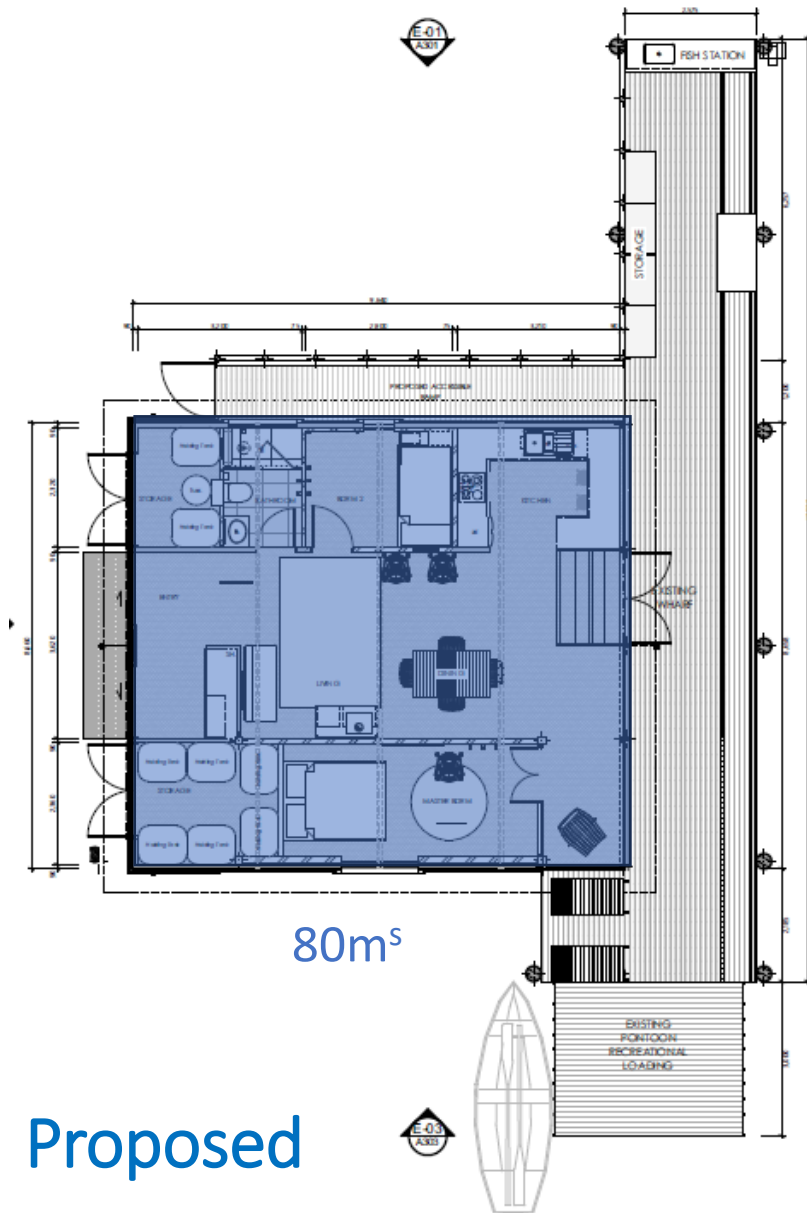
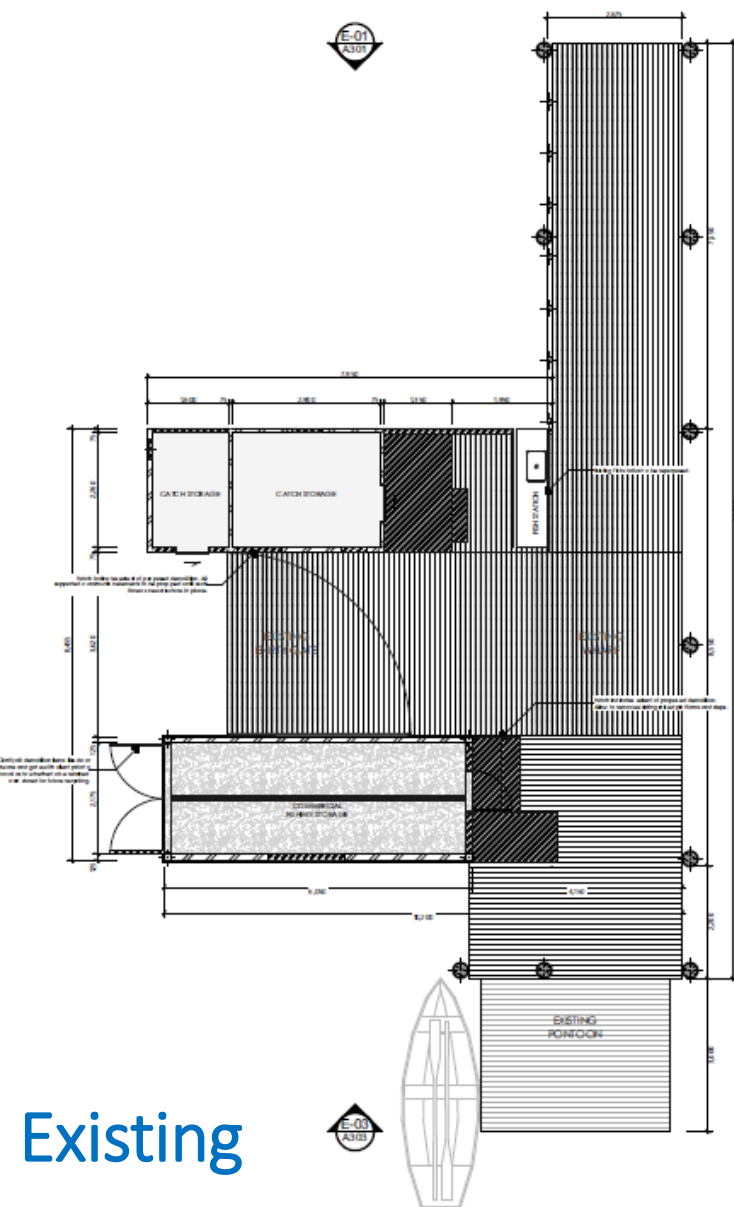


# Original Design





# Proposed Layout of Boat Shed





# Consultation with stakeholders



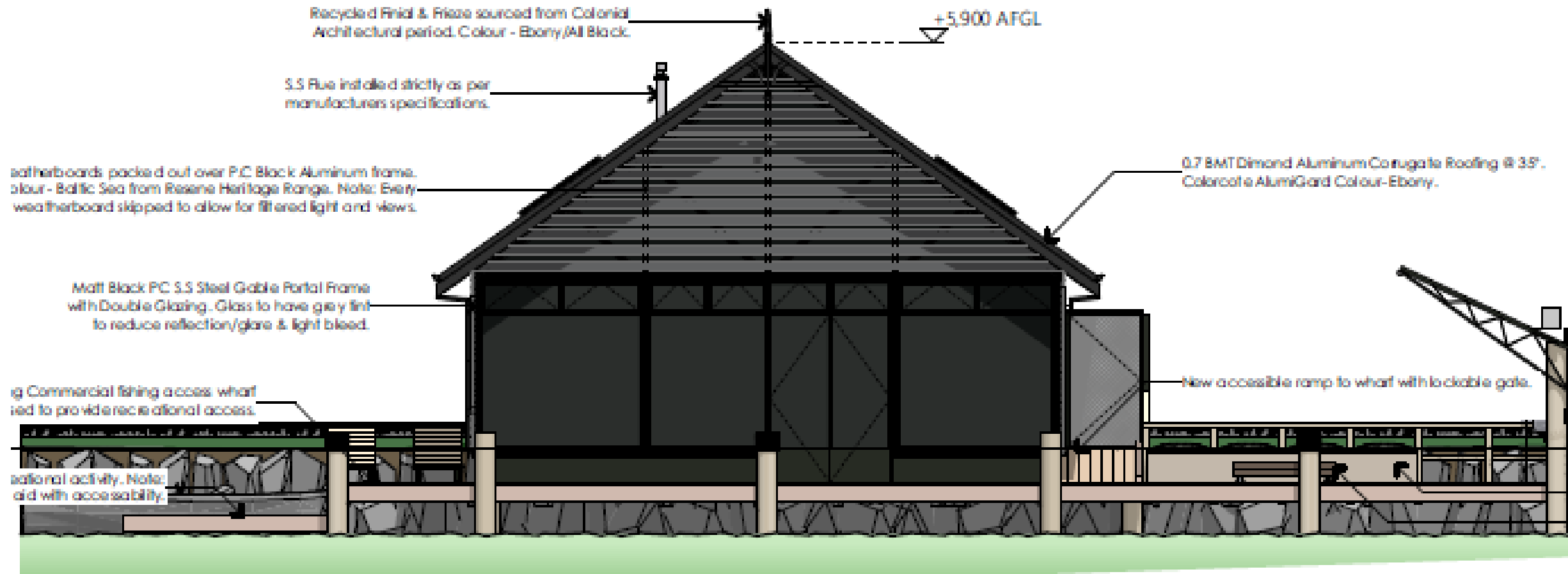


# Altered Design





# Altered Design





The building would be “pinned” to the river bank





Ample parking is available





# Re-storing and re-purposing the past



Wharf repairs and recovered/repared floating pontoon – provides all tide access to the wharf





Wheelchair access to the floating pontoon – via access ramp





Wheelchair access to water level at any tide





Original crane has been repurposed to provide safe, all tide access to boats



# The wharf in 2025





# The wharf in 2025





# The Shed – Ranked in the top 1% globally on Airbnb



*Thank you for sharing your paradise. This place has opened up my mind to dream again, knowing that they do come true.*

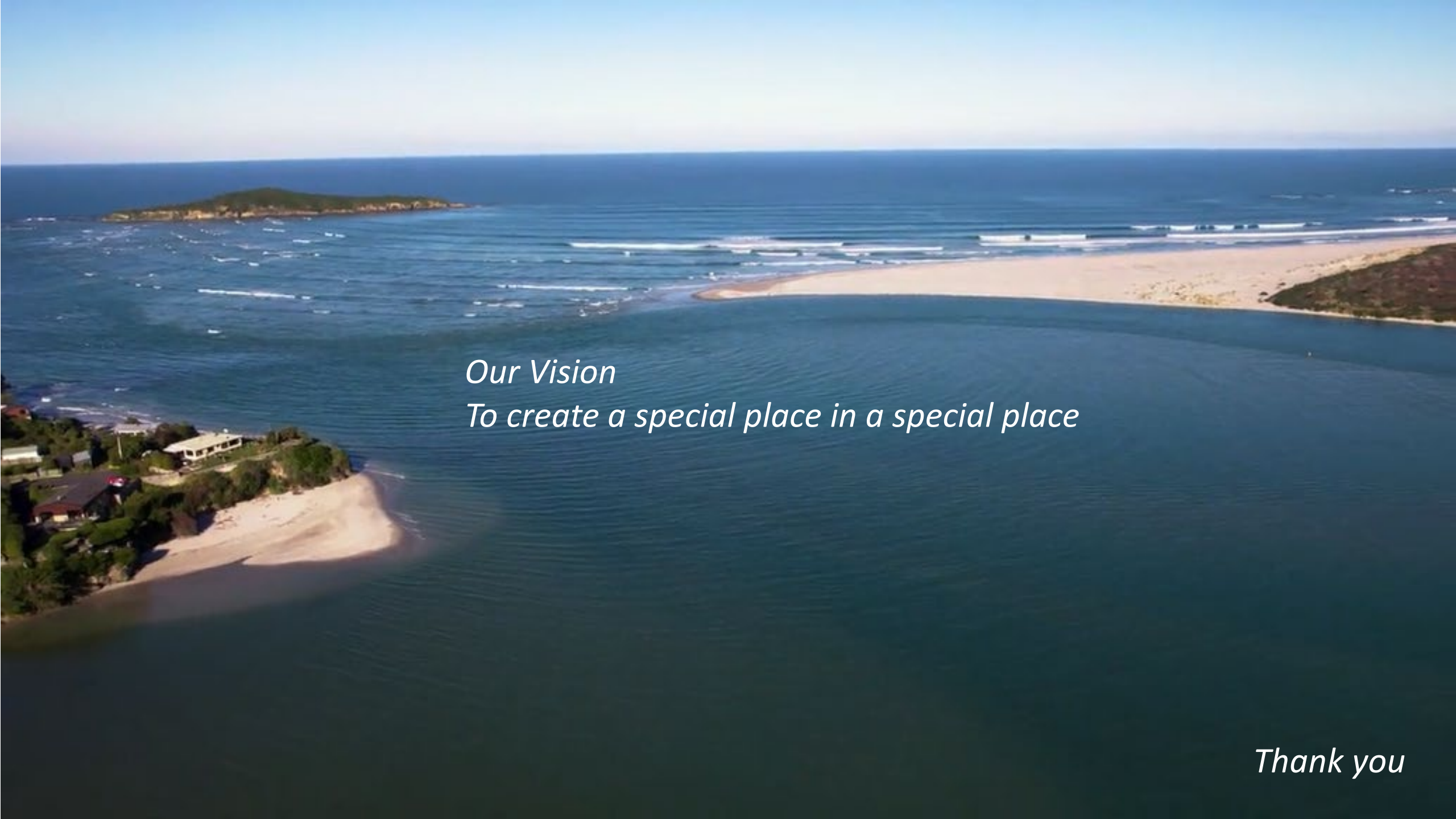
*Marcelle Miller July 2025*



# Access to a beautiful and pristine waterway





An aerial photograph of a coastal landscape. In the foreground, a dark blue bay or inlet curves around a sandy beach on the left. The beach is bordered by green trees and a few buildings. In the middle ground, a long, narrow sandy spit extends into the water, with waves breaking on its right side. In the background, a small, green island is visible in the distance under a clear blue sky.

*Our Vision*  
*To create a special place in a special place*

*Thank you*